



ECONOMIC IMPACTS • 2011

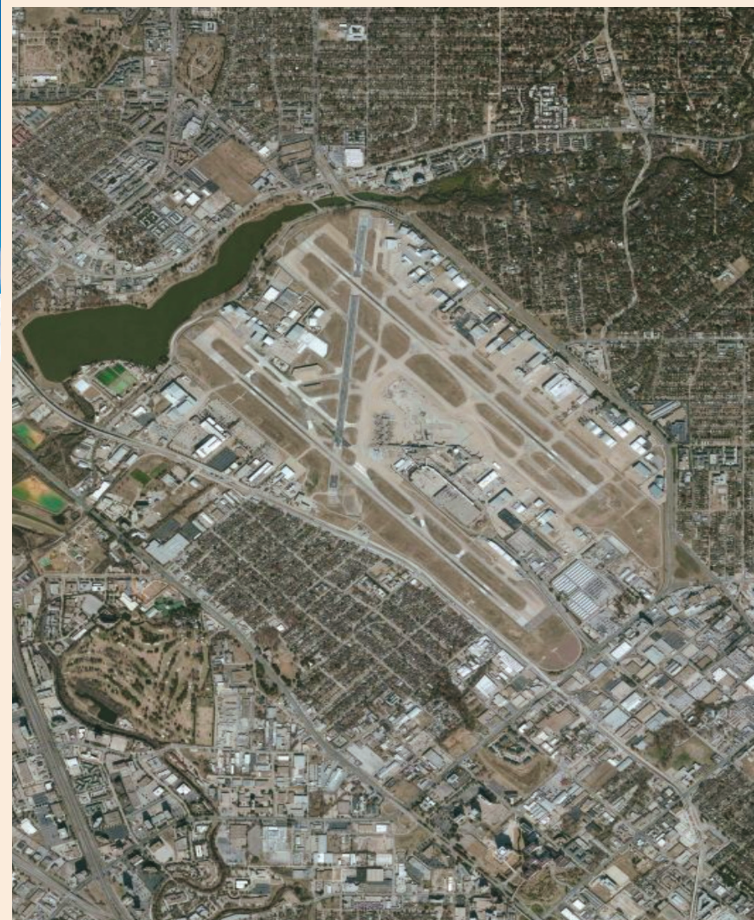
Dallas Love Field Airport
Dallas, TX





Dallas Love Field Airport, a part of the Dallas Airport System, is a tool for attracting aviation-related businesses and businesses with corporate flight departments to the region. Corporate aviation activity, aircraft maintenance, and cargo shipping are all important aspects of the airport's general aviation activities. The airport also maintains its role as a critical component of the North Texas commercial aviation system.

Dallas Love Field strives to be a safe, efficient, and user-friendly airport that is responsive to customer needs and community concerns. Airport personnel constantly seek to improve services of both commercial and general aviation operations. The airport sponsors events such as National Business Aviation Association meetings and previews of new business jets.



Runways:

13R/31L - 8,800 ft. x 150 ft.

13L/31R - 7,752 ft. x 150 ft.

18/36 - 6,147 ft. x 150 ft.



The airport enjoys strong community support from organizations such as the Love Field Citizen Action Committee, the Environmental Advisory Committee, and the Love Field Pilots Association.

2010 ECONOMIC IMPACTS

Description		Impacts
General Aviation Activities:		
Economic Activity		\$ 480,351,680
Salary, Wages, and Benefits		\$ 167,845,568
Employment		2,220
Commercial & General Aviation Activities:		
Economic Activity		\$ 2,821,992,517
Salary, Wages, and Benefits		\$ 1,246,968,381
Employment		41,083
<i>Sources: Survey responses, IMPLAN, and Authors' estimates</i>		

- Capital Expenditures for infrastructure and other airport improvements from 2006-2010 generated \$91.8 million in economic activity that created 760 job-years of employment. (A job-year equals one job lasting one year.)

GENERAL AVIATION

Impacts on Texas

The general aviation system in Texas provides important infrastructure that promotes both regional economic development and community recreational opportunities. The system's airports also generate economic activity through capital and operations expenditures, business activities of airport tenants, and spending by visitors using airport facilities. This analysis examined the economic impacts of the facilities that are part of the Texas Airport System Plan (TASP). In total, the state's general aviation airports and general aviation activities at commercial airports create:

Economic Activity
\$14.6 billion

Salary, Wages, and Benefits
\$3.1 billion

Employment
56,635 permanent jobs

Airport Statistics

FAA Identifier – DAL

Latitude / Longitude

32-50-49.6000N / 096-51-06.4000W

Elevation – 487 ft.

Location

5 miles northwest of Dallas, TX



Texas Department of Transportation

Aviation Division

www.TxDOT.gov/business/aviation

1-800-68-PILOT

125 E. Eleventh Street

Austin, TX 78701-2483

UNT UNIVERSITY OF NORTH TEXAS™
Discover the power of ideas.

Prepared by:

Center for Economic Development and Research

Department of Economics

Denton, TX

<http://www.unt.edu/cedr>