



ECONOMIC IMPACTS • 2011

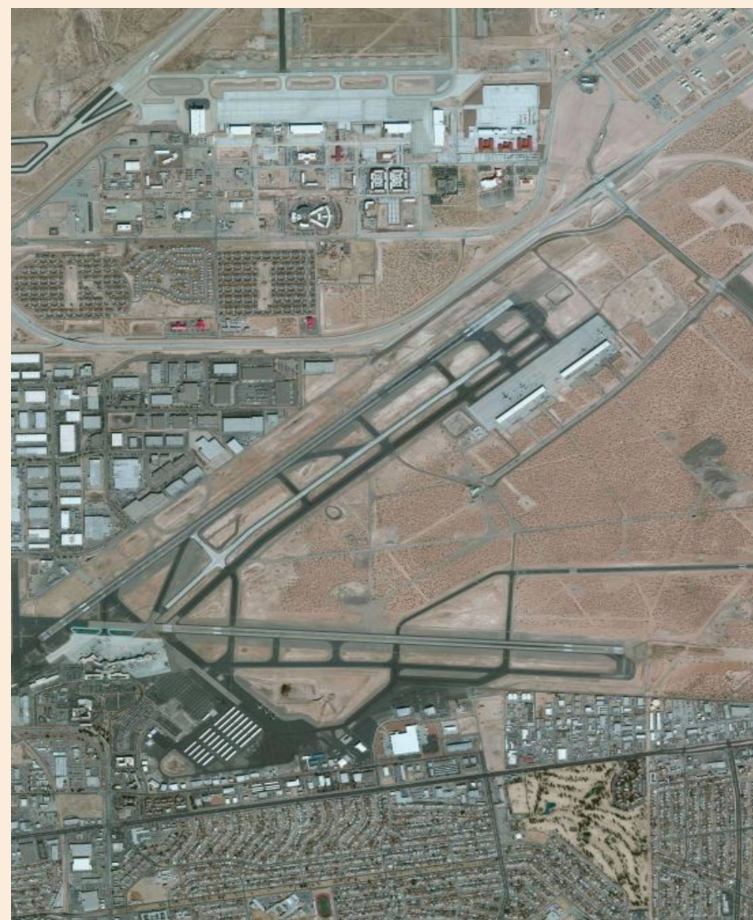
El Paso International Airport
El Paso, TX





El Paso International Airport is located within ten miles of an international point of entry and houses offices of the U.S. Department of Homeland Security and U.S. Customs.

Airport property spans 7,000 acres, within which three industrial parks have been built. Airport staff works closely with the El Paso Regional Economic Development Corporation and the Greater El Paso Chamber of Commerce to promote aviation related and non-aviation related business development. The airport sponsors community events such as the Amigo Air Show at Briggs Field each October and gives tours to the public throughout the year.



Runways:

4/22 - 12,020 ft. x 150 ft.

8R/26L - 9,025 ft. x 150 ft.

8L/26R - 5,499 ft. x 75 ft.



The airport supports a high volume of medical service activity with patients being transported to the University of Texas El Paso trauma center, William Beaumont Hospital, and a burn unit in Lubbock.

2010 ECONOMIC IMPACTS

Description		Impacts
General Aviation Activities:		
Economic Activity		\$ 15,593,378
Salary, Wages, and Benefits		\$ 5,669,882
Employment		190
Commercial & General Aviation Activities:		
Economic Activity		\$ 748,062,024
Salary, Wages, and Benefits		\$ 358,044,801
Employment		13,691
<i>Sources: Survey responses, IMPLAN, and Authors' estimates</i>		

- Capital Expenditures for infrastructure and other airport improvements from 2006-2010 generated \$41.3 million in economic activity that created 414 job-years of employment. (A job-year equals one job lasting one year.)

GENERAL AVIATION

Impacts on Texas

The general aviation system in Texas provides important infrastructure that promotes both regional economic development and community recreational opportunities. The system's airports also generate economic activity through capital and operations expenditures, business activities of airport tenants, and spending by visitors using airport facilities. This analysis examined the economic impacts of the facilities that are part of the Texas Airport System Plan (TASP). In total, the state's general aviation airports and general aviation activities at commercial airports create:

Economic Activity

\$14.6 billion

Salary, Wages, and Benefits

\$3.1 billion

Employment

56,635 permanent jobs

Airport Statistics

FAA Identifier – ELP

Latitude / Longitude

31-48-26.1000N / 106-22-39.2000W

Elevation – 3,962 ft.

Location

4 miles northeast of El Paso, TX



Texas Department of Transportation

Aviation Division

www.TxDOT.gov/business/aviation

1-800-68-PILOT

125 E. Eleventh Street

Austin, TX 78701-2483

UNT UNIVERSITY OF NORTH TEXAS™
Discover the power of ideas.

Prepared by:

Center for Economic Development and Research

Department of Economics

Denton, TX

<http://www.unt.edu/cedr>