



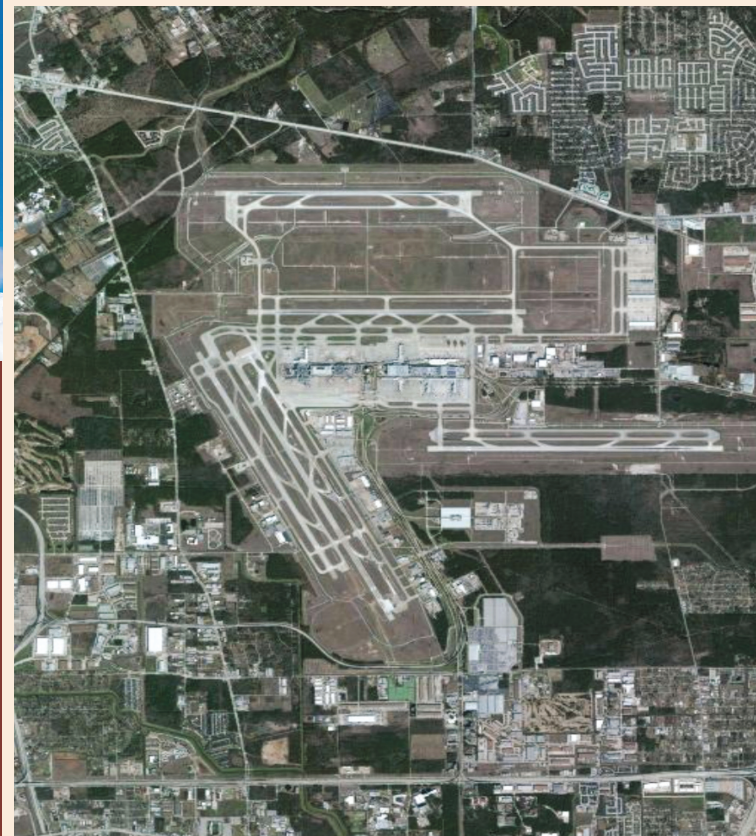
## ECONOMIC IMPACTS • 2011

**George Bush Intercontinental/Houston Airport**  
Houston, TX





**George Bush Intercontinental/Houston Airport** serves the busy metropolis of Houston. In addition to serving commercial and general aviation operations, the airport sponsors IAH Fest – an annual community event that features sponsored booths, static aircraft displays, and other activities. The event draws a crowd of around 1,500 people, and all proceeds from the event are used for scholarships. The airport also hosts the MUTT Strut – an annual 5K runway race and pet walk. This event attracts about 1,500 participants and has raised as much as \$165,000 for the Houston area SPCA. The airport receives support from the local congressional delegation, the Governor's Texas Department of Tourism and Economic Development, the Houston Mayor's office, and the City Council.



**Runways:**

**15L/33R - 12,001 ft. x 150 ft.**

**9/27 - 10,000 ft. x 150 ft.**

**15R/33L - 9,999 ft. x 150 ft.**

**8R/26L - 9,402 ft. x 150 ft.**

**8L/26R - 9,000 ft. x 150 ft.**



*The airport works closely with the Greater Houston Partnership to support business development in a 10-county region.*

## 2010 ECONOMIC IMPACTS

Description	Impacts
<b>General Aviation Activities:</b>	
Economic Activity	\$ 9,602,816
Salary, Wages, and Benefits	\$ 4,036,425
Employment	104
<b>Commercial &amp; General Aviation Activities:</b>	
Economic Activity	\$ 11,291,372,920
Salary, Wages, and Benefits	\$ 5,363,056,491
Employment	192,617
<i>Sources: Survey responses, IMPLAN, and Authors' estimates</i>	

- Capital Expenditures for infrastructure and other airport improvements from 2006-2010 generated \$188.7 million in economic activity that created 1,424 job-years of employment. (A job-year equals one job lasting one year.)

## GENERAL AVIATION

### Impacts on Texas

The general aviation system in Texas provides important infrastructure that promotes both regional economic development and community recreational opportunities. The system's airports also generate economic activity through capital and operations expenditures, business activities of airport tenants, and spending by visitors using airport facilities. This analysis examined the economic impacts of the facilities that are part of the Texas Airport System Plan (TASP). In total, the state's general aviation airports and general aviation activities at commercial airports create:

#### Economic Activity

\$14.6 billion

#### Salary, Wages, and Benefits

\$3.1 billion

#### Employment

56,635 permanent jobs



## Airport Statistics

**FAA Identifier** – IAH

**Latitude / Longitude**

29-59-03.9610N / 095-20-29.1920W

**Elevation** – 97 ft.

**Location**

15 miles north of Houston, TX



Texas Department of Transportation

Aviation Division

[www.TxDOT.gov/business/aviation](http://www.TxDOT.gov/business/aviation)

1-800-68-PILOT

125 E. Eleventh Street

Austin, TX 78701-2483

**UNT** UNIVERSITY OF NORTH TEXAS™  
Discover the power of ideas.

*Prepared by:*

Center for Economic Development and Research

Department of Economics

Denton, TX

<http://www.unt.edu/cedr>