



ECONOMIC IMPACTS • 2011

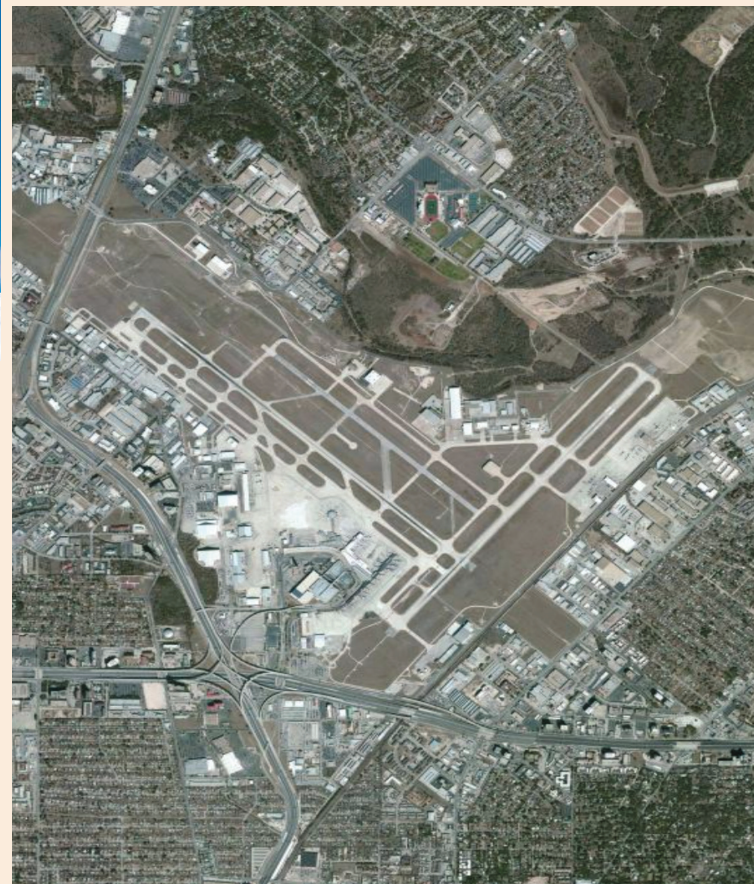
San Antonio International Airport
San Antonio, TX





San Antonio International Airport provides convenient air transportation services supporting a growing population and tourism trade. The airport manager works closely with the chamber of commerce to attract and retain aviation services and other businesses to the community.

The airport houses military medical evacuation aircraft for wounded troops to be flown into San Antonio's Fort Sam Houston, home to Brooke Army Medical Center, University of Texas Health Science Center, a USUHS teaching hospital, and the only Department of Defense dedicated burn treatment center. Multiple air medical evacuation and medical transportation service providers based at San Antonio International offer these important services to the region.



Runways:

12R/30L - 8,502 ft. x 150 ft.

3/21 - 7,505 ft. x 150 ft.

12L/30R - 5,519 ft. x 100 ft.



Work by airport management helps to ensure that the San Antonio Airport System is an integral part of the City's overall Economic Development Plan.

2010 ECONOMIC IMPACTS

Description		Impacts
General Aviation Activities:		
Economic Activity		\$ 2,679,333,376
Salary, Wages, and Benefits		\$ 542,906,368
Employment		8,706
Commercial & General Aviation Activities:		
Economic Activity		\$ 6,434,683,363
Salary, Wages, and Benefits		\$ 2,055,624,658
Employment		61,654
<i>Sources: Survey responses, IMPLAN, and Authors' estimates</i>		

- Capital Expenditures for infrastructure and other airport improvements from 2006-2010 generated \$772.6 million in economic activity that created 6,621 job-years of employment. (A job-year equals one job lasting one year.)

GENERAL AVIATION

Impacts on Texas

The general aviation system in Texas provides important infrastructure that promotes both regional economic development and community recreational opportunities. The system's airports also generate economic activity through capital and operations expenditures, business activities of airport tenants, and spending by visitors using airport facilities. This analysis examined the economic impacts of the facilities that are part of the Texas Airport System Plan (TASP). In total, the state's general aviation airports and general aviation activities at commercial airports create:

Economic Activity

\$14.6 billion

Salary, Wages, and Benefits

\$3.1 billion

Employment

56,635 permanent jobs

Airport Statistics

FAA Identifier – SAT

Latitude / Longitude

29-32-01.3000N / 098-28-11.2000W

Elevation – 809 ft.

Location

7 miles north of San Antonio, TX



Texas Department of Transportation

Aviation Division

www.TxDOT.gov/business/aviation

1-800-68-PILOT

125 E. Eleventh Street

Austin, TX 78701-2483

UNT UNIVERSITY OF
NORTH★TEXAS™
Discover the power of ideas.

Prepared by:

Center for Economic Development and Research

Department of Economics

Denton, TX

<http://www.unt.edu/cedr>