

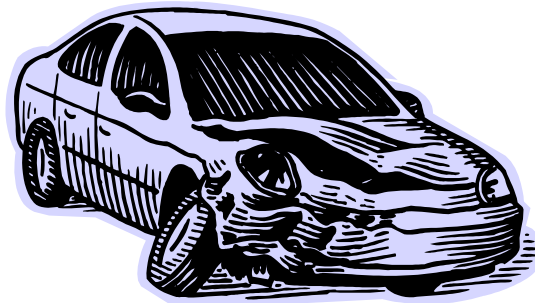


# Cass County Fair

203 Paul Street  
Pleasant Hill, MO 64080  
816-540-3135

For questions call Steve Bricker at 816-716-9089

## Powder Puff Derby



**July 12, 2018**

**8:00 PM (during regular Demo Derby)**

**Must have 4 cars or there will be no Powder Puff Derby.**

- ◆ Please use safety rules for regular demo derby.
- ◆ Front Wheel Drive Wheel Base needs to be 108" or less.
- ◆ If Judge feels the car is built to stout then the Judge has the authority to pull the car from the Powder Puff and place in the regular Derby.

**Visit [www.casscountyfairmo.com](http://www.casscountyfairmo.com)  
for Entry Form and Rules.**



# POWDER PUFF DERBY

Thursday, July 12, 2018 - 8:00pm

Cass County Fairgrounds  
Pleasant Hill Mo.



Sponsored by: Cass County Fair

**1<sup>st</sup> Place: \$175.00    2<sup>nd</sup> Place: \$75.00**

Trophies will be given for 1<sup>st</sup> and 2<sup>nd</sup> Places

Entry Fee: \$35.00

Car Number: \_\_\_\_\_

**After 7:00 PM: \$50.00**

Name: \_\_\_\_\_

Address: \_\_\_\_\_

Age \_\_\_\_\_ Year/Make of car: \_\_\_\_\_

A \$100.00 removal fee if car is not removed that night.

**Please read the following rules carefully before signing your name:**

I hereby agree to conform to and comply with the rules governing this contest. I further agree to hold blameless the Cass County Fair Board, City of Pleasant Hill or Steve Bricker for any loss or injury to myself or property by reason of participation in this contest.

**There must be 4 cars or there will be no derby. 1<sup>st</sup> & 2<sup>nd</sup> places will receive entry fees back.**

Signature of Driver: \_\_\_\_\_

Please Print Name: \_\_\_\_\_

Return this form along with entry fee payment to:

Cass County Fair  
Powder Puff Derby  
203 Paul St.  
Pleasant Hill Mo. 64080

For questions please call Steve Bricker at 816-716-9089

# CASS COUNTY FAIR

## JULY 12, 2018

*For questions contact Steve Bricker: 816-716-9089*

### DEMOLITION DERBY & POWDER PUFF DERBY RULES

- 1 Check in time: **4:00 pm to 7:00 pm no exception** Driver's meeting: **7:30 pm**; Derby starts: **8:00 pm. After 7:00 pm, fee will be \$50.00 instead of \$40.00.**
- 2 Semi wet track.
- 3 \* Any passenger car or wagon allowed minimum 108" wheelbase required, (**No trucks, ambulance, imperials, jeeps or checkers allowed**)
- 4 Seat belts are required and must be worn at all times when in the car.
- 5 Battery must be securely fastened and covered in front seat of passenger floor board. (**Only one automobile type battery allowed**)
- 6 **Breaching of the barrier will be cause for disqualification.**
- 7 **Minimum age of drivers is 16 years. Waivers will be required from all persons allowed access to restricted areas—to include minor waivers signed by parents/guardians.**
- 8 **Helmets (minimum 2000 Snell specifications) required with goggles if no full-face shield; drivers should wear long pants and long sleeve shirts with heavy boots that go over the ankles. (a fire-retardant driver's suit is recommended)**
- 9 All glass, mirrors, lenses, chrome, body moldings, pot metal, metal trim, head-liners, inside door panels, and anything breakable or loose, must be removed from car prior to arrival.
- 10 \* No welding on frame, or reinforcing frame, Doors and trunk **must** be chained or welded shut, but not reinforced, if trunk is permanently shut, an inspection hole of twelve to fifteen inches is required.
- 11 Engine must be in the original location; engines may be chained or welded to the frame.
- 12 Driver's door must be reinforced. Reinforcement material may be five feet in length by six inch wide channel type material and have a minimum of four (4) one inch bolts with six inch square steel backing plates one for each bolt. All sharp corners must be rounded. May be inside or outside.

- 13 Original gas tanks **must** be removed before arrival. A DOT approved supplement fuel tank (maximum three or six gallon capacity) must be placed in the rear passenger area, secured and covered with a non-flammable material or sheet of metal secured to floor.
- 14 Radiators must be in stock position. **WATER ONLY**
- 15 Driver's door must be white: Number (s) must be 20 inches or bigger with black paint. Also have number on top for judging and recognition of car.
- 16 \* Car's engine hood **must** be chained or bolted and must be able to be opened for inspection. If bolted, a maximum of one inch or smaller bolts are allowed through the sheet metal. Bolts **may** extend to or through the frame. **Two 10 inch fire holes, one on each side, are required in the engine hood.** (The radiator area must not be blocked)
- 17 **NO CHANGING OF SUSPENSION:** No use of longer shackles or springs adjusters, no air shocks, no double springs, no cranking up torsion bars. Cars must have bounce. Chains, cables, and or wire wrapped around suspension are optional.
- 18 Driver must stay in car with helmets and seat belts on until heat is over. (see rule number 30.)
- 19 Valve stem protectors are allowed.
- 20 Headers must be in vertical position.
- 21 Any car bumper can be used on any car but must be in stock position. It must be bolted on or can be welded only (equaling one inch or less per bolt).
- 22 **No** altering or increasing the weight of the car. No sand or concrete can be used in any part of the automobile, including the tires. Trailer hitches must be completely removed so that no reinforcement remains. Towing from the arena will be done by derby officials.
- 23 **Driver's** windshield must have either (expanded metal with ½ inch square or minimum of 3- ½ inch bars). Hood bar in center of windshield running from the firewall to the roof.
- 24 Transmission cooler may be moved to back seat area or on top of car but must be in a self-contained metallic box or be secured.
- 25 Electric fuel pumps are permitted for vehicles not equipped with manual pumps, but must have shut-off within reach of driver. Ether starting fluid may not be used in arena. If found in the car during or after the race, the driver and crew will be disqualified.
- 26 A support bar across firewall and behind driver's seat with added brace in middle providing, it does not go beyond rear axle is optional.
- 27 **ABSOLUTELY NO ALCOHOL** ALLOWED IN PITS AS WELL AS IN THE ARENA. DURING THE DERBY, ALL COOLERS WILL BE INSPECTED.
- 28 **Aggressive contact must be made every 1 minute or disqualification.**

- 29 If car stalls during the race, driver has 2 minute to restart and resume derby.
- 30 All decisions made by officials are final!!!
- 31 All drivers' must be 18 or older and must be able to provide proof at the request of officials.
- 32 No intentional hitting on driver's door, or head-on collisions. If so, driver and car will be disqualified for the heat. This will be a judgment ruling. (Exception- if pushed into a driver's door by another car.)
- 33 Immediate disqualification will result if you: Remove your seat belt, helmet, or leave your car for any reason. **(Exception- if your car is on fire after race is stopped.)**
- 34 A \$100.00 removal fee will be paid if car is not removed night of the derby.
- 35 Only 15 minute break will be allowed between the final regulation heat and the "hard luck" heat. In order to ensure you time to make repairs to your demo car.
- 36 1<sup>st</sup> place \$175.00 2<sup>nd</sup> place \$75.00
- 37 Blind draw for heat when sign up.

**First come bases or you can pre register to assure a spot.**

**IF IT DOESN'T SAY YOU CAN, YOU PROBABLY CAN'T!**

**JUDGES HAVE FINAL DECISION.**