

Sewing Competition Handbook

Adult

IMPORTANT DATES

Online or Paper Entry Form deadline	NEW NOTE EARLIER DEADLINE Friday, December 14, 2018
Deliver items to the Florida Center — located at the Florida State Fair. (see page 4)	Thursday, January 24, 2019 10:30 a.m. – 6:00 p.m. Friday, January 25, 2019 10:30 a.m. – 6:00 p.m.
Shipping Information – (see page 4)	Saturday, January 26, 2019 10:30 a.m. – 3:00 p.m.
Items exhibited	February 7 - 18, 2019
Entry pickup	Wed, February 20, 2019 11:00 a.m. – 6:00 p.m.
Strawberry Festival participants...	Thursday, February 21, 2019 11:00 a.m. – 6:00 p.m.
Please arrange for early pickup with Creative Living Office staff.	NEW Additional Pick Up Date Saturday, February 23, 2019 11:00 a.m. – 6:00 p.m.

For more information, contact
Competitive Exhibit Coordinator

Brenda Gregory

Phone: 813-734-2810

Email: brenda.gregory@floridastatefair.com



The Sewing Best of Show was Marie Knick from Satellite Beach.

Benefits of Competing?

The Florida State Fair is proud to showcase the bounty of talented people from around the state. Not only do we provide you the opportunity to win ribbons and prize money... it's also a great way to share your talent with a larger community. **In appreciation... all exhibitors receive a FREE ticket to attend the fair.**

Competition Overview

Entry Fee: Adult Division \$3 per entry

Entry Fees are non-refundable

All information regarding **Creative Living Competitions** can also be found at www.floridastatefair.com.

How to enter online – page 4

General Rules – page 5

Paper entry form is available on the last page.

Exhibitors are encouraged to read this handbook in its entirety.

To enter as a group or organization contact Creative Living office at 813-627-4309.

Eligibility

- **The Sewing Adult Divisions** are open to all Florida residents ages 18 and up.

Divisions in the Sewing Competition

- **Adult Apparel** – page 3
- **Children's Apparel** – page 3
- **Special Occasion Apparel** – page 3
- **Home Décor & Accessories** – page 3
- **Cosplay Apparel** – page 3
- **Recycled Fashions** – page 3

For Youth Fiber Arts Competitions see the Youth Fiber Arts , Sewing & Quilting Competition Handbook.

Entry Rules

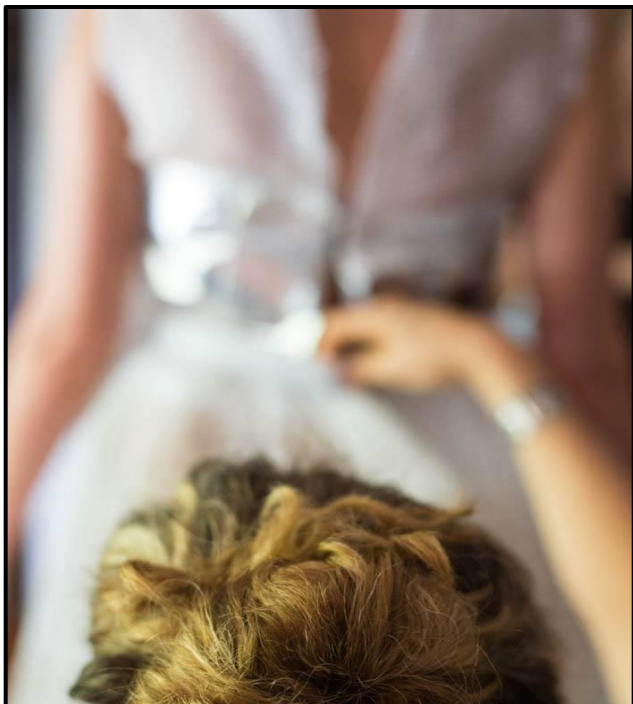
NUMBER OF ENTRIES



1. Because of the limitations for display space **only eight (8) sewing items per person** will be accepted for judging, however there is no limit to the number of pieces per class.
2. Work must be of the artist exhibiting, no teacher assisted work.

GENERAL ENTRY RULES

3. Each adult exhibitor will receive one (1) daily admission ticket to the Fair.
4. Entries previously exhibited in the Florida State Fair may not be submitted for competition.
5. Exhibited work must be completed within the last two (2) years.
6. Entries must have been prepared/made/processed by the exhibitor in whose name they are entered.
7. In keeping with the Florida State Fair's family orientation; nudes or items of an offensive, controversial or objectionable nature or subject matter will not be accepted.
8. Entries completed by two or more individuals are permitted, but will be counted as one exhibitor (the individual who completed the entry form).



Judging & Awards

The Fair ensures that the judges we employ are knowledgeable in the division in which they are judging and will be impartial. Judges reserve the right to reassign entries to a more appropriate division or class. Judging will be done using a scorecard to assist in keeping decisions as objective as possible. **The decision of the judge(s) is final.**

If, at the Judge's discretion, an entry does not merit a placing, the Judge shall give no award under any circumstance. This rule applies whether there is one or more exhibits in the Class.

Awards Information

Sewing – Adult Division

First Place – State Fair Ribbon **\$12**

Second Place – State Fair Ribbon **\$7**

Third Place – State Fair Ribbon **\$4**

Best of Show – State Fair Ribbon **\$50**

Best of Show Awards will be chosen from the first place winners in each Sewing Adult Division.

Judging Criteria

Construction – 50%

Workmanship, Uniformity, Technique, Finishing

Presentation Quality – 10%

Suitability of fabric to pattern, Appropriate in quality, size, color, finish and design

General Appearance – 15%

Design, Originality, Color Combinations, Texture Combinations, Cleanliness

Degree of Difficulty – 25%

The Sewing Exhibition will be held in the Florida Center during the Florida State Fair. The exhibit will be open for your viewing pleasure.

Sewing – Divisions & Classes

Sewing: Adult Apparel – Adult Division 65.101

Class Description

- 1 Dress (daytime)
- 2 Blouse & Skirt
- 3 Pants (Women or Men)
- 4 Sportswear (Women or Men)
- 5 Tailored Suit or Jacket (Women or Men)
- 6 Sleeping Wear or Robe (Women or Men)
- 7 Coat, Cape or Jacket (Women or Men)

Sewing: Children's Apparel

– Adult Division 65.102

Class Description

- 1 Baby's Apparel (up to 36 months)
- 2 Child's Apparel (3-12 years)
- 3 Child's Sleeping Garment or Robe

Sewing: Special Occasion Apparel

– Adult Division 65.103

Class Description

- 1 Wedding Gown
- 2 Bridal Wear (bridesmaids, flower girl, mother of bride or groom dress)
- 3 Wedding Accessories, must be sewn (no flowers)
- 4 Formal & Party Wear (Women, Men or Children)
- 5 Evening Gowns or Prom Dress

Sewing: Home Décor & Accessories

– Adult Division 65.104

Class Description

- 1 Hat, Scarf, Tie & Bowtie
- 2 Purse or Bag
- 3 Apron
- 4 Pillow
- 5 Table Linen
- 6 Doll Clothes
- 7 Other Not Listed

Sewing: Cosplay Apparel

– Adult Division 65.105

Cosplay is short for "costume play", is a type of performance art whose participants dress up as a specific character, often with elaborate costumes and accessories. Costumes sewn to portray characters from movies, comics, graphic novels, literature, science fiction, fantasy, history, etc.

Class Description

- 1 Science Fiction Character
- 2 Anime or Manga Character
- 3 Fantasy Character
- 4 Comic Book Character
- 5 Movie Character
- 6 Historical or Renaissance Character
- 7 Steampunk
- 8 Holiday or Seasonal Costume
- 9 Other Not Listed

Sewing: Recycled Fashions

– Adult Division 65.106

Recycled fashions must be made of at least 75% recycled or reused materials that otherwise would be thrown away or recycled.

Class Description


- 1 Dress – Daytime (Women)
- 2 Dress – Daytime (Children)
- 3 Formal & Party Wear (Women)
- 4 Formal & Party Wear (Men)
- 5 Formal & Party Wear (Children)
- 6 Gowns – Wedding or Evening (Women)
- 7 Gowns – Wedding or Evening (Children)
- 8 Coat, Cape or Jacket (Women or Men)
- 9 Hats & Headpieces
- 10 Shoes
- 11 Other Not Listed

How to Enter Online

We encourage you to enter online, using ShoWorks. The Florida State Fair has implemented ShoWorks, an on-line entry program. ShoWorks is an industry standard used by over 50 fairs nationally. This user-friendly program can be trusted to accurately enter you into our competitions and allows for efficient communications via e-mail. We are excited to have ShoWorks to better facilitate entering Florida State Fair competitions.

- Take a moment to look through this Competition Handbook to see which division and class your entry is eligible to compete in. Then, follow the easy steps listed below to enter the competition you have chosen.
- **To Enter Online using ShoWorks.**
Go to www.floridastatefair.com and at the top of the home page select the **State Fair** TAB and you will see in the dropdown list a link for **Creative Living Competitions**. Select the **Enter Online** button at the top of that page.
- Everyone must register as a new exhibitor each year.
- **Note that sessions expire after 20 minutes** of inactivity, so “save the cart” if you plan on leaving the computer for more than 20 minutes.
- When registering, please verify that all information that you entered into ShoWorks is correct. Please pay special attention to capitalization, full names of cities/counties and use proper spelling (no abbreviations).
- You can pay fees with a credit card or mail in a check.

Mailing Paper Entry Forms

- **Entry Forms must be postmarked by Friday, December 14th, 2018.** 
Failure to complete any portion of entry form may result in disqualification.

Mail Entry Form to:

Family Living Competitions – Sewing
Florida State Fair
P.O. Box 11766
Tampa, FL 33680

Make checks payable to: Florida State Fair Authority

Delivery of Entries

- **All entries must be delivered to the Florida State Fair Authority on either:**
Thursday, January 24, 10:30 a.m. – 6:00 p.m.
Friday, January 25, 10:30 a.m. – 6:00 p.m.
Saturday, January 26, 10:30 a.m. – 3:00 p.m.

Deliver entries to:

Florida State Fair Authority
Florida Center Bldg.

Enter off of Orient Road thru the Service entrance on the west side of the fairgrounds

Map with directions to the Florida Center available on the **Creative Living Competitions** webpage.

- Entries arriving at the Fairgrounds after Delivery and Shipping Deadlines may be disqualified.

Shipping Information

- Shipped entries must arrive no later than **Friday, January 18, 2019.**
- Include a **Shipping Form**, available at www.floridastatefair.com on the **Creative Living Competitions** webpage. Shipments missing form will be returned COD after the Fair.
- **Shipped entries, with Shipping Form to:**
Florida State Fair Authority – Sewing
4800 US Hwy 301 North
Tampa, FL 33610.
- Entries are shipped back to exhibitors after the Fair in the same container. Use reusable shipping containers.
- Return shipping costs are the responsibility of the entrant.
- Return shipping options: COD, Prepaid shipping label, UPS or FedEx account.

Retrieving Entries

- See the calendar for Pick Up dates, times and locations (page 1).
- Entries not picked up on designated dates can be arranged for special pick up appointment by emailing brenda.gregory@floridastatefair.com.
- All entries not claimed by September 1st of the same year will be recycled, disposed or donated through our program department.

General Rules

Disclaimer

Please be advised that competitive exhibits are entered at the exhibitor's risk. The Florida State Fair does not insure and is not responsible for any loss, damage, or theft of entries, even if the loss, damage, or theft occurs as the result of the handling of the exhibit by staff, volunteers, contractors and/or visitors. If the exhibitor desires insurance coverage, this coverage should be secured from a personal insurance agent prior to entry and the policy written to cover the period of exhibition and transportation. Reasonable care will be taken to prevent loss or damage to exhibits. Unauthorized persons are not permitted in the building after closing hours.

Division/Class Cancellation

The Florida State Fair management reserves the right to return entries and cancel any division or class in which, in its judgment, the entries are insufficient to secure adequate competition.

Entry Errors

Florida State Fair management is not responsible for finding errors in entries. Exhibitors are responsible for any and all errors which were submitted online or on entry and summary forms. No exhibitor shall be entitled to an award which has been disallowed as the result of his own error. The Florida State Fair management shall withhold the payment of awards for exhibits that are ineligible and may recover awards that have been paid for ineligible entries that are disclosed during post audits of Fair records. However, exhibitors with cause are entitled to question the validity of any disallowance. Such exhibitors should inform the Florida State Fair management immediately, in writing, giving their name, address, complete description of the entry and the reason for requesting reconsideration. Requests will not be considered later than ninety (90) days after receiving notice of disallowance.

Substitution

Substitutions changes if necessary, must be within the same department by the original exhibitor. Substitutions must be completed the last day of the entry delivery period. The Florida State Fair or its judges may disqualify entries, or reclassify an entry to the correct class if it is not a true representative of the division or class in which it is entered. You cannot transfer your entry to another exhibitor.

Previously Entered Entry

Any entry that has been exhibited at a previous Florida State Fair is not eligible for entry in the 2019 Florida State Fair. This excludes Horticulture & Aquarium Beautiful entries.

Verification

Exhibitors wishing to verify that the Florida State Fair has received submitted entry forms and fees must include a self-addressed/stamped envelope when submitting entry forms. Online submissions will receive a confirmation code once entries are submitted.

Responsibility

The Florida State Fair shall not be responsible for exhibits remaining on the fairgrounds after designated release times. All still exhibits or display elements remaining on the Fairgrounds after the designated release time will be treated as abandoned property and will be disposed of on or before September 1st of the same year.

Removal of Entries

An exhibitor may not remove his or her entry from the Florida State Fair once it has been accepted. Entries must be on exhibit at the official opening of the Fair or at any other time specified in the Competition Handbook and shall not be removed from the Fairgrounds prior to the release date printed in the handbook, except (at the discretion of the Florida State Fair management) in cases of positive evidence of sickness, accident and/or death, or other circumstances that are in the best interests of the Fair.

Dishonored Checks

A penalty of \$25.00 per dishonored check must be paid if a check in payment of entry fees or other applicable fees is refused by the bank. Only cash, certified check or money orders are acceptable for penalty payment.

Design

The Florida State Fair assumes total design control over the presentation of all exhibits. Entries designed for hanging and not so equipped will be hung in a manner deemed appropriate by the Fair. No exhibit changes will be made once the entries have been displayed. Once an entry has been received by the Florida State Fair, no further handling of entry by exhibitor shall be permitted. Relocation and final placement shall be accomplished by Florida State Fair personnel. Entries requiring assembly/disassembly must include detailed instructions and sketches for assembly/disassembly. Instructions should indicate lifting points, unsecured parts and any other information required for such handling. Where necessary, bank pins will be utilized to attach exhibits for display.

Sewing Competition Entry Form



Entry Forms must be postmarked by Friday, December 14th, 2018.
 Failure to complete any portion of entry form may result in disqualification.

OFFICE USE ONLY	
Exhibitor #	_____
Total Fee	_____
Paid	<input type="checkbox"/> YES <input type="checkbox"/> NO
Type	<input type="checkbox"/> Cash <input type="checkbox"/> MO <input type="checkbox"/> Check
	Check No. _____

Please print legibly

Exhibitors Name (First, Last)		Organization
Mailing Address		County
City	State	Zip Code
Phone ()	Email	

Entry Fee: Adult Division \$3 per entry
Exhibitors may enter up to eight (8) entries for judging, however there is no limit to the number of pieces per class.

#	DIVISION #	CLASS #	Entered Item Description	FEE
1				
2				
3				
4				
5				
6				
7				
8				
Total Amount Due				\$

I hereby certify that I have read the Florida State Fair General Rules for the Competitive Exhibits Program (Page 5) and the above item(s) is/are entered for exhibition strictly in accordance with these rules, by which I agree to be governed. I also agree that the Florida State Fair may use my name, likeness, or photograph (including, but not limited to photographs of my entry), in any manner relating to my participation in the Competitive Exhibits Program, free of charge and without further notice or consultation.

Signature of exhibitor _____

Date _____

Mail Entry Form to:
 Creative Living Competitions – Sewing
 Florida State Fair
 P.O. Box 11766
 Tampa, FL 33680

Make checks payable to: Florida State Fair Authority