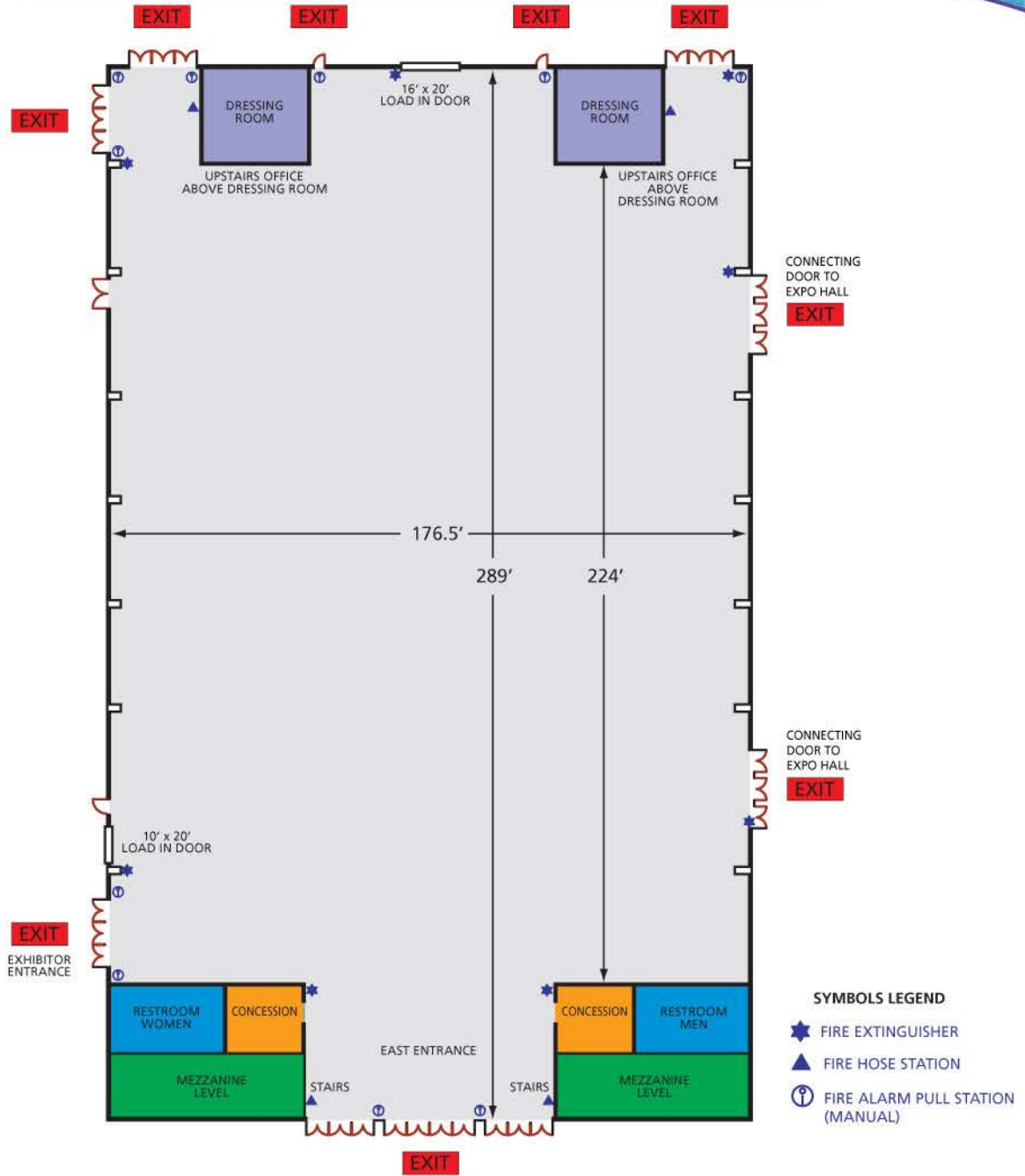


# ENTERTAINMENT HALL



**52,000 sq. ft.**

<b>Size*</b>	224' x 176.5'	<b>Reception Seating</b>	4,000
<b>Ceiling</b>	36'	<b>Banquet Seating</b>	3,300
<b>Theatre Seating†</b>	5,000	<b>10' x 10' Booths</b>	218
<b>Classroom Seating</b>	2,500	<b>Load In Doors</b>	1-10' x 20' 1-16' x 20'

\*Size dimensions based on usable event space. †Mezzanine level upstairs provides seating in bleachers.