

Preparing Entry for Exhibition

Fine Art (2D)

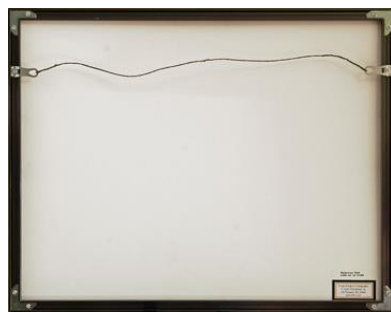
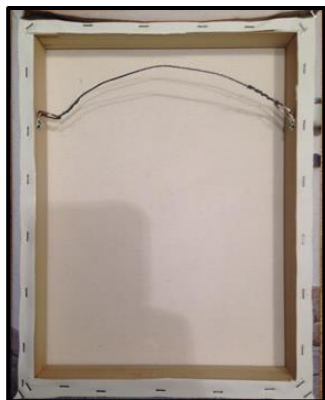


Artwork must be framed!

Gallery wrapped canvases do not need to be framed.

- Framed entries can hold artwork that is matted.
- Framed items must be ready to hang using secure screw eyes and wire.
- Gallery wrapped canvases should be ready to hang using secure screw eyes and wire.

Examples of wire hangers on frames and canvases



Graphic Art

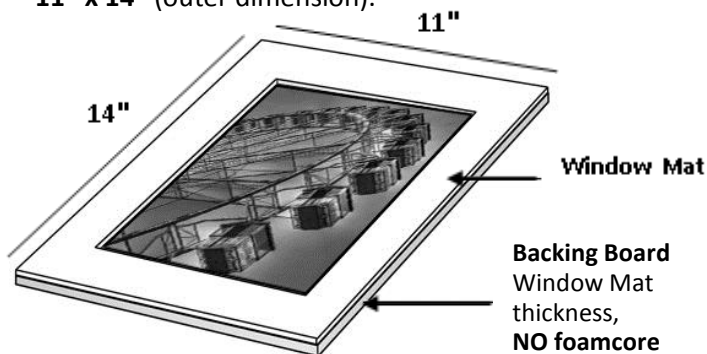
Graphic Art entries are judged presentation as well as the project itself.

- Outer dimensions of mat board or frame cannot exceed 24" in any direction.
- **Stationary Systems** can be framed or mounted on mat board.
- **Computer Graphic Entries** can be framed or mounted on mat board.
- **Screen Printed Items** can arrive on a hanger or presented in a way that supports the project.



Photographs

- Photographs must be printed on photo paper (gloss or matte), unless exhibiting in Alternative Process.
- All photographs must be matted in a standard single weight black or white mat board. **NO Double Mats. The finished size of the mat board must be 11" x 14"** (outer dimension).



- Print size(s) can be any size as long they can be matted to fit to the 11" x 14" mat. Odd size prints may need the mat window professionally cut to size.
- How the print gets attached to the mat is dependent on the type of pre-cut mat you purchase.
- Prints can also be attached to a board with a **hinge mount**; the method we recommend involve taping the print into place with *folded hinges*. Double stick tape can also be used to adhere the print to the backing board.
- **Note:** The Florida State Fair will be inserting your photographs in clear sleeves to further protect them during Fair. That is why No foam core should be used to back the print

Sources for mat boards

Michaels, Hobby Lobby & Blick Art Supply all have pre-cut photo mats.

Redimat is an online resource that has many sizes as well as custom mat cutting available

