

2019 Fremont County Fair



OPEN CLASS COMPETITION GUIDE

2019 Royalty



2019 Royalty Queen, Alexis Herbert; Lady in Waiting, Cydney Bradley; Junior Queen, Mindy Russell;

Junior Queen Attendant, Kiera Plymale

Photo by Alan Sinner Photography, Riverton

WELCOME from your 2019 Fremont County Fair!

Fremont County Commissioners

Travis Becker, Riverton – Chairman
Larry Allen, Lysite – Vice Chairman, Fair Liaison
Ray Price, Lander
Jennifer McCarty, Lander
Clarence Thomas, Fort Washakie

Fremont County Fair Board

Darin Coyle – Riverton - Chairman
Bryan Warner – Riverton - Vice Chairman
Amanda Slack - Shoshoni - Treasurer
Michael Gallagher – Riverton - Secretary
Kassie Holdren, Riverton; Brandon Haun, Riverton; Terri Long Cash, Riverton

Fremont County Fair Staff

Barney Cosner, CFE, Riverton – Executive Director
Pat Hart, Lander – Office Manager
Laura Harrington, Riverton - Administrative Assistant
Susan Cooper, Lander – Bookkeeping
Rick Wilmes, Riverton – Grounds Maintenance

Agriculture Education/FFA Advisors

Mike McConnell – Lander
Damein Christensen – Shoshoni
Taylor Haley - Riverton
Vay Jensen – Wind River

University of Wyoming Extension Staff

Chance Marshall – UW Extension Educator, Ex-Officio Board Member
Alex Malcolm – UW Extension Educator, County Chairman 4-H & Ex-Officio Board Member
Amanda Small – UW Extension Educator – Wind River Reservation & Ex-Officio Board Member
Member Laura Balis – UW Extension Educator & Ex-Officio Board Member
Kim Collins – Administrative Secretary, Lander
Rachel Fisk - Secretary, Hudson
Rhonda Bower – Secretary, Wind River Reservation

Contact the Fair:
Fremont County Fair
1010 Fairgrounds Drive
Riverton, Wyoming 82501

Telephone: 307-856-6611
Fax: 307-856-6283
Web: www.fremontcountyfair.org
Email: info@fremontcountyfair.org

Fremont County Fair

2019 Boards and Committees

Junior Livestock Sale Board

Responsibilities: Coordinating all aspects of the Junior Livestock Sale. Appointed/Approved by the Fair Board.

Rob Dolcator, Riverton - Chair - 851-0402

Carmen Vasco, Riverton - Vice Chair

Becky Emerson, Riverton - Treasurer

Teffany Fegler, Shoshoni - Secretary

Jessica Sullivan, Shoshoni

Tara Berg, Lander

Timmery Hellyer, Lander

Wendell Vonkrosigk, Shoshoni

Bobby Lane, Riverton

Lynette Jeffres, Riverton – Bookkeeper

Brandon Haun, Riverton: Fair Board Liaison

Junior Livestock Show Advisory Committee

Responsibilities: Enhancing the quality of the (Junior) Youth Livestock Show for the youth exhibitor's benefit. Approved by the Fair Board.

Dillon Hedges, Lander

Nick Comes, Lander

Mike McConnell, Lander- Chair -330-5670

Alex Malcolm, Riverton

Shaylee Cruickshank, Lander - Secretary

Chance Marshall, Lander

Damien Christensen, Shoshoni

Bryan Warner, Riverton: Fair Board Liaison

Make your plans now for your future Fremont County Fair and Rodeo:

2020: July 27 to August 1; 107th edition

2021: August 2 to August 7: 108th edition

2022: August 1 to August 6: 109th edition

(These dates are tentative and subject to change at the discretion of the Fremont County Fair Board)

Fair Royalty Committee

Responsibilities: Coordinating all aspects of the Fair Royalty Program for the benefit of youth, the community and the Fair. Appointed/Approved by the Fair Board.

Rebecca Burrell, Riverton - Chair - 307-851-1996

Brenda Cadwallader, Kinnear

Heather Holbert, Vice-Chair

Pam Rivers, Riverton - Coordinator

Kenna Sweglar, Secretary

Rhonda Slack - Riverton

Terri Long-Cash, Riverton: Fair Board Liaison

Wind River PRCA Rodeo Round Up Committee

Responsibilities: Coordinating the two nights of PRCA Rodeo, known as the Wind River PRCA Rodeo Round Up, which features Military Appreciation Night and Tough Enough to Fight Cancer Night. Volunteer Membership.

Dennis Mazet, Riverton – Chairman

Rebecca Burrell, Riverton- Vice Chair

Lori Franzen, Riverton

Dennis George, Riverton

Randy George, Riverton

Warren Hess, Riverton

Pat Lawson, Riverton

Alex Malcolm, Riverton

Jim McCray, Riverton

Teresa Nirider, Lander

Scott Ratliff, Riverton

Pam Rivers, Riverton

Rod Rivers, Riverton

Darin Coyle, Riverton: Fair Board Liaison

A Special Thank You from the Fremont County Fair Board
to the
Fremont County Junior Livestock Sale Board and all the Volunteers that make the
Junior Livestock Sale a Super Success!

A SPECIAL THANK YOU TO
WYOMING COMMUNITY BANK
AND
PEPSI-COLA BOTTLING CO.
FOR PROVIDING THE
BUYERS MEAL AND DRINKS!

SPECIAL THANKS TO
THE AUCTIONEERS:
WARREN AND TY THOMPSON
YOUR QUALITY SUPPORT OF FREMONT COUNTY YOUTH IS
GREATLY APPRECIATED!

Please make your plans to attend and support the
2019 FREMONT COUNTY JUNIOR LIVESTOCK SALE
SATURDAY, AUGUST 3, AT 10 A.M.

THANK YOU TOP TEN BUYERS FOR 2018
YOUR SUPPORT OF THE FUTURE OF FREMONT COUNTY IS GREATLY APPRECIATED!

A.D. MARTIN LUMBER

STAGNER OIL & GAS

BAILEY ENTERPRISES, INC.

WIND RIVER OILFIELD SERVICE INC.

FLUID PRO, LLC

WIND RIVER RANCH SUPPLY, LLC

FREMONT MOTORS (ALL AFFILIATES

WYOMING COMMUNITY BANK

JOE SCOTT ENTERPRISES

WYOMING CUSTOM MEATS

2019 Fremont County Fair

Table of Contents

Guidelines How to Enter the Fair	14
Exhibitor Definitions	21
Premium Payout Table	21
Agility Dogs.....	31
Agriculture Products.....	21
Antiques & Relics.....	65
Artisans.....	26
Arts & Artisans.....	23
Award Donors.....	84
Awesome Fun Pass..... NEW	19
Awesome Monkey Bread Contest..... NEW	38
Awesome Sauce Contest..... NEW	38
Beadwork.....	29
Beer/Wine.....	22
Bees.....	22
Boards/Committees.....	2
Born Again Junk..... NEW	61
Bread.....	36
Breakfast for Exhibitors.....	16
Breeders Pen of 3.....	52
Candy.....	40
Canning.....	41
Caramel Craving Contest.....	39
Cats.....	29
Chocolate to Die For.....	39
Cookies.....	37
County Commissioners.....	1
Country Christmas Ornament.....	62
Cowabunga Cocktail Contest..... NEW	61
Cowboy Crafts.....	34
Crafted Arts.....	32
Crocheting.....	56
Culinary.....	36
Culinary Contests.....	38
Cupcake Wars..... NEW	61
Dairy Products.....	21
Dogs.....	30
Drawing.....	24
Eggs.....	21
Entry for Fair.....	14
Entry Forms.....	69-83
Extension Homemakers Clubs.....	62
Facebook/Instagram Scavenger Hunt.....	63
Facility Map.....	85
Fair Royalty 2019.....	F1
Fine Arts.....	24
Flowers.....	45
Food Arts.....	37
Fremont County Fair Parade.....	69
Friends of the Fremont County Fair.....	17 & 45
Fruits.....	51
Future Cattle Producers Contest..... NEW	52
Guest Rules.....	15
Hay.....	35
Hobby Collection.....	34
Homemakers Club.....	62
Honey.....	22
How to Enter.....	5
Jams & Jellies.....	42
Jewelry.....	33
Kelvins Kaps 4 Kancer Contest.....	64
King Arthur Flour Contest.....	40
Lapidary.....	26
Leathercraft.....	34
Livestock.....	51
Metal Arts.....	29
Native American Artisans.....	29
Natural Fibers/Wool.....	53
Natural Fiber Arts.....	27
Needlework.....	56
New for 2019.....	17
Night Shows.....	19
Painting.....	24
Photography.....	24
Photography Contest.....	25
Pickles/Relish.....	43
Pies.....	39
Pocket Pets.....	31
Pottery.....	27
Premium Payout Dates.....	13
Premium Table.....	21
Quilts.....	58
Rules.....	14-15
Schedule of Events.....	6-13
Sculpture.....	24
Sewing.....	55
Silversmithing.....	27
Special Contest.....	61
Sponsors.....	18
Sweepstakes.....	62
Table Setting.....	38
Vegetables.....	48
Visual Arts.....	24
Weiner Dog Derby.....	63
Woodworking.....	34

HOW TO ENTER THE 2019 FREMONT COUNTY FAIR

Please follow these easy steps to be entered properly.

1. Access the 2019 Fremont County Fair Competition and Events Guide, which is available only online at www.fremontcountyfair.org and click on Competition Guide: Entry form or assistance in entering available at:
 - * UW Fremont County Extension offices in Lander & Riverton
 - * Fremont County Fair OfficeRead through the 2019 Fair Guide to find all contests you are interested in entering.
2. Fill out an Entry Form in the back of the Fair Guide, using the sample form for a guide.
3. Submit the Entry Form to the Fair Office by 6:00pm, Monday, July 8, 2019.
4. Pick up your entry tags/claim tickets at the Fair Office on Friday, July 19, 2019.
5. Carefully Read the Fair Schedule (pages 7-13) and refer to the contests you are entered in to find out where and when your entries are to be delivered for judging.
6. Make sure to tag all your entries properly before bringing them to the exhibit buildings.
7. Deliver your entries to the appropriate building, at the appropriate time, as designated in this Fair Guide.
8. Refer to General Information & Department Sections for specific rules regarding all entries.

How do I get my entries back?

1. Come to the appropriate building on Sunday, August 4, 2019 from 10:00 a.m. to 4:00 p.m.; (Quilts 2:00 p.m. to 4:00 p.m.) or on Monday, August 5 from 8 a.m. to 5 p.m.
2. Check to make sure you have retrieved all of your entries before you leave the fairgrounds.

2019 Competition Guide is available online

Go to www.fremontcountyfair.org

- Click on "Fair, then click, Premium Book"
- Find and Click on Preferred Department

This will open the section of the Fair Book that you are interested in.

You can print out your selection or reference it from your IT Source.

You can print the Entry Forms which are in the back of the book, or go to "Fair" then click on "Entry Forms" you may also enter online and avoid printing any forms.

*For assistance please contact the Fair Office at
307-856-6611*

**Thank you for entering your
2019 Fremont County Fair!**

**Fremont County Fair Board
will pay out premiums won on the
following dates:**

Fri., Aug. 2 10:00 am to 6:00 pm
Sat., Aug. 3 10:00 am to 6:00 pm
Sun., Aug. 4 9:00 am to 3:00 pm
Mon., Aug. 5 8:00 am to 5:00 pm

FREMONT CENTER NORTH WINDOW

“8 Days of Awesome!”

106th Fremont County Fair

Presented By Bailey Enterprises

2019 Schedule of Events

(Tentative: Subject to change)

Time	Event	Location
Wednesday, JUNE 19		
8:00 a.m.	“Awesome Fun Passes” for 8 days of entertainment on sale and Individual Night Show Tickets on Sale	Fair Office
8:00 a.m.	Carnival Ride Pass and Individual Day Passes on Sale	Fair Office

Saturday, JUNE 22		
8:00 a.m.	Enter Online until July 8 and be entered in a drawing for a \$50 Gas/Gift Card www.fremontcountyfair.org	

Monday, JULY 8		
5:00 p.m.	ALL ENTRY FORMS DUE!! 4-H, FFA and Open Class (only exception is Hay Show Entries) Hand Deliver to: Extension Offices: Lander and Riverton Fair Office: 1010 Fairgrounds Drive, Riverton Postal Service: 1010 Fairgrounds Drive, Riverton, WY 82501 Fax to: (307)856-6283 Email: info@fremontcountyfair.org	

Entries may be made online and must receive a confirmation of entry, which is the exhibitor’s sole responsibility. If you send your entry via email or fax, please call to confirm that the entry has been received.

Late entries will be accepted after July 8 deadline, for a \$10 processing fee, per person/exhibitor, until Friday, July 12 at 6:00 p.m. (No late open quilt entries accepted.)

FRIDAY, JULY 12		
6:00 p.m.	Last day: Late entry deadline with fee paid.	Fair Office

Reminder: All Entry Forms are due Monday, July 8 by 6:00 p.m. at the Fair Office. After this date, all late entries will pay a processing fee of \$10.00 per person/exhibitor until Friday, July 12 at 6:00 p.m. (No late open quilt entries accepted)

WEDNESDAY, JULY 17		
6:00 p.m.	NBHA Barrel Race	Grand Arena

THURSDAY, JULY 18		
8:00 a.m. – 12 p.m.	Hay Show Entry Forms due Hay Exhibits Due in	Fair Office Agri Center
8:00 a.m. – 6:30 p.m.	Quilt Entry Tags picked up	Fair Office: FC
4:30 p.m. – 7:30 p.m.	Open Class Quilt arrival	Fremont Center

FRIDAY, JULY 19		
8:00 a.m. – 6:00 p.m.	Fair Entry Tags picked up	Fair Office: FC
7:00 a.m. – 9:00 a.m.	Equine Health Inspection; Horse Stalling Check in Youth Horse Show Check In	SE Gate 3/Horse Barn
8:00 a.m.	Youth Horse Show: Showmanship Senior 4-H Showmanship Int.4-H/Jr. 4-H Showmanship FFA Showmanship followed by: Youth Halter Classes	Grand Arena/Sunset Arena Grand Arena Grand Arena Grand Arena Grand Arena

“8 Days of Awesome!”
106th Fremont County Fair
Presented By Bailey Enterprises
2019 Schedule of Events

(Tentative: Subject to change)

Time	Event	Location
FRIDAY, July 19 Continued		
	30 minutes following Halter Classes complete	Grand Arena
	Youth Horse Show Performance Classes: Speed Events	
	1) Ranch Sorting (blind draw) 2) Working Cow Horse 3) Team Roping	
	4) Breakaway Roping 5) Goat Tying 6) Barrels 7) Poles	
SATURDAY, JULY 20		
7:00 a.m. – 9:00 a.m.	Equine Health Inspection	SE Gate 3
	Youth Horse check-in	
8:00 a.m.	Youth Horse Show: Youth Performance Classes	
	English/Western Classes: Senior 4-H/FFA	Sunset Arena
	Int. 4-H/Jr 4-H	Grand Arena
9:00 a.m. to Completion	All Youth Horse Trail Classes	TBD
SUNDAY, JULY 21		
8:00 a.m. – 10 a.m.	Equine Health Inspection	SE Gate 3
8:30 a.m.	Begin arrival of Dressage horses	Grand Arena
9:30 a.m.	Open & Youth Dressage Horse Show; Programmed Ride Events	Grand Arena
MONDAY, JULY 22		
8:00 a.m. – 6:00 p.m.	Open Class Quilt Judging (not open to the public)	Fremont Center
TUESDAY, JULY 23		
8:00 a.m.	4-H Fabric and Fashion Exhibits Judged	Little Wind Center
8:00 a.m.	4-H Fabric and Fashion Modeling	Heritage Hall
1:00 p.m. – 8:00 p.m.	Open Quilts Hung (not open to public)	Fremont Center
WEDNESDAY, JULY 24		
7:00 p.m.	4-H Fashion Revue	Riverton Middle School
THURSDAY, JULY 25		
8:00 a.m. – 12:00 p.m.	Hay Show Exhibits: Tagged/Placed	Agri Center
11:00 a.m. – 7:00 p.m.	All Open Class Exhibits in Place	Fremont Center
	(Excluding Agriculture Products, Culinary, Floriculture and Horticulture)	
11:00 p.m. – 1:00 p.m.	Boy Scouts & Girl Scouts Interview Judging	Fremont Center
2:00 p.m. – 6:00 p.m.	4-H Exhibits Interview Judging	Heritage Hall
5:00 p.m.	Campground Opens (for first arrival designated campers only.)	Campground
FRIDAY, JULY 26		
9:00 A.M. – 6:00 P.M.	Fremont County Cattlewomen’s Photo Contest entries in place	Agri Center
	Wool and Natural Fibers exhibits in place	Agri Center
11:00 a.m. – 7:00 a.m.	Special Contest entries in place	Fremont Center
5:00 p.m.	Campground Open for designated campers	Campground

“8 Days of Awesome!”

106th Fremont County Fair

Presented By Bailey Enterprises

2019 Schedule of Events

(Tentative: Subject to change)

Time	Event	Location
SATURDAY, JULY 27		
	“8 DAYS OF AWESOME!”	
	EXHIBIT BUILDINGS NOT OPEN	
6:30 a.m. – 9:30 a.m.	Dog Health Inspection	Center; Gate 2
7:30 a.m.	Open and 4-H Dog Agility Class Measurements	Show Lawn
8:00 a.m.	Pee Wee Dog Showmanship followed by: Open and 4-H Dog Agility Shows	Show Lawn Grand Arena
8:30 a.m. – 9:00 a.m.	Begin arrival of Cats	Cottonwood Lawn
9:30 a.m.	Pee Wee Cat Showmanship followed by: Open Cat Show followed by: Youth Cat Showmanship and 4-H Cat Show	Cottonwood Lawn
9:00 a.m.	Judging: All Open Class Exhibits (excluding Agriculture Products, Culinary, Floriculture and Horticulture)	Fremont Center
10:00 a.m.	Open Dog Show followed by: 4-H Dog Showmanship and Conformation	Show Lawn
1:00 p.m. - 6:00 p.m.	All Culinary Exhibits in place	Fremont Center
12:30 p.m. – 1:00 p.m.	Begin arrival of all Pocket Pets	Cottonwood Lawn
1:00 p.m.	Kidz Zone Pocket Pet Show followed by: Open Pocket Pets and 4-H Pocket Pets	Cottonwood Lawn
6:00 p.m.	TWILIGHT FAIR PARADE	Main Street

7:30 p.m.	RANCH RODEO PRESENTED BY NON-TYPICAL SERVICES & LOGISTICS LLC (TICKET REQUIRED) GRAND ARENA
-----------	--

SUNDAY, JULY 28 **FREMONT FAMILY DAY!**

PRESENTED BY:

	EXHIBIT BUILDINGS NOT OPEN	
9:00 a.m.	Judging: Open Culinary Exhibits	Fremont Center
12:00 p.m. - 8:00 p.m.	FREMONT FAMILY DAY AND KID ACTIVITES BEGIN	
12:00 p.m. - 2:00 p.m.	FAMILY LUNCH	Cottonwood Lawn
2:00 p.m. – 6:00 p.m.	Table Settings Contest Set Up	Fremont Center
2:00 p.m. – 6:00 p.m.	Kidz Zone Exhibits in place	Little Wind Center
2:00 p.m. – 6:00 p.m.	All FFA Exhibits in place	Agri Center
2:00 p.m. – 6:00 p.m.	All Open Agriculture Products in place	Fremont Center
4:00 p.m. – 8:00 p.m.	Animal Health Inspection Stations Open (Veterinarians on site for animal inspections and papers.)	
	Goats/Sheep/Swine	Parking Lot
	Beef Cattle/Dairy Cattle	Parking Lot
4:00 p.m. – 8:00 p.m.	Begin Arrival of Livestock (no arrivals prior to 4 p.m.) Beef and Dairy Cattle Goats, Sheep, Swine	SE; Gate #3 SE; Gate #3
7:30 p.m.	WEINER DOG DERBY	GRAND ARENA

“8 Days of Awesome!”

106th Fremont County Fair

Presented By Bailey Enterprises

2019 Schedule of Events

(Tentative: Subject to change)

Time	Event	Location
MONDAY, JULY 29 FREMONT COUNTY MILITARY APPRECIATION DAY		
	EXHIBIT BUILDINGS NOT OPEN	
7:00 a.m. – 11:00 a.m.	Animal Health Inspection Stations Open (Animals must have health inspections done prior to arrival on grounds; coming in on Monday)	
	Goats/Sheep/Swine	Parking Lot (south)
	Beef Cattle/Dairy Cattle	Parking Lot (south)
7:00 a.m. – 11:00 a.m.	Begin Arrival of Livestock (no arrivals prior to 7 a.m.)	
	Beef and Dairy Cattle	SE; Gate #3
	Goats, Sheep, Swine	SE; Gate #3
7:30 a.m. – 10:30 a.m.	Open Bees and Honey in place	Agri Center
9:00 a.m.	Judging: Agriculture Products	Fremont Center
10:00 a.m. – 7:00 p.m.	Kidz Zone Exhibit Building Open	Little Wind Center
10:00 a.m. – 7:00 p.m.	Kidz Zone: Make a sand bottle	Little Wind Center
11:00 a.m.	ALL LIVESTOCK IN PLACE (no arrivals after 11 a.m.)	Livestock Facilities
1:00 p.m.	Youth Market Beef weigh in followed by: Commercial Cow weigh in	Scale House
2:00 p.m.	Judging: FFA Exhibits	Agri Center
3:00 p.m.	Open Bees and Honey Judging	Agri Center
3:00 p.m.	Kidz Zone – Decorated T-Shirt	Little Wind Center
4:00 p.m.	Table Settings Judging	Fremont Center
5:00 p.m.	Free Stage Entertainment Begins	Free Stage
4:30 p.m. – 7:30 p.m.	Rabbit Health Inspection	North; Gate#1
4:30 p.m. – 7:30 p.m.	Arrival of Youth Rabbits	Fur & Feathers Pavilion
5:30 p.m.	Fremont County Bred, Fed and Owned Swine Show followed by: Fremont Producers Jackpot Swine Show (enter in barn day of show)	Swine Pavilion
5:00 p.m. – 6:30 p.m.	4-H Garden Interview Judging	Heritage Hall
5:30 p.m.	Youth Market Goat weigh in	Small Blue Scale
6:00 p.m.	Kidz Zone - Stick Horse Rodeo	Cottonwood Arena
7:30 p.m.	All Youth Rabbits in place	Fur & Feathers Pavilion

7:30 p.m.	PRCA RAM RODEO PRESENTED BY FREMONT MOTORS “MILITARY APPRECIATION NIGHT” & BENEFIT RAFFLE FOR FREMONT COUNTY VETERAN’S ASSISTANCE FUND (TICKET REQUIRED) GRAND ARENA
-----------	---

COMPLIMENTARY ADMISSION OF PAST & PRESENT MILITARY PERSONNEL (*) WITH MILITARY ID CARD!

(Must present Military ID at the Fair Office prior to 5 p.m. July 30 for Ticket.)

*Complimentary Ticket is for Military Personnel only – spouse ticket at ½ price \$6.00

TUESDAY, JULY 30 FREMONT CANCER AWARENESS DAY

	EXHIBIT BUILDINGS OPEN 12:00 P.M. to 8:00 P.M.	
7:30 a.m.	Youth Market Swine weigh in begins	Small Blue Scale
8:00 a.m.	Youth Market Lamb weigh in begins	Scale House
7:30 a.m. – 10:30 a.m.	Poultry Health Inspection (all birds inspected)	North; Gate #1
7:30 a.m. – 10:30 a.m.	Begin Arrival of all Youth Poultry	Fur & Feathers Pavilion
8:00 a.m.	Youth Dairy Cattle Showmanship (Sr., Int., Jr.) followed by: Youth Dairy Cattle Show	West Ring: Show Lawn

“8 Days of Awesome!”

106th Fremont County Fair

Presented By Bailey Enterprises

2019 Schedule of Events

(Tentative: Subject to change)

Time	Event	Location
TUESDAY, JULY 30 (CONTINUED)		
9:00 a.m.	Youth Dairy Goat Showmanship (Sr., Int., Jr., FFA) Followed by: Youth Dairy Goat and Specialty Goat Show	East Ring: Show Lawn
10:00 a.m. – 7:00 p.m.	Kidz Zone Exhibit Building Open	Little Wind Center
10:00 a.m. - 7:00 p.m.	Kidz Zone: Creative Corner	Little Wind Center
10:30 a.m.	All Youth Poultry in Place	Fur & Feathers Pavilion
12:00 p.m. – 8:00 p.m.	Exhibit Buildings Open for Guests	
1:00 p.m.	Youth Meat Goat Showmanship (Sr., Int., Jr., FFA) followed by: Youth Breeding Meat Goat Show; followed by: Youth Market Goat Show and all other market goat classes	East Ring: Show Lawn
2:00 – 4:00 p.m.	Royalty Clinic with Miss Rodeo Wyoming	Little Wind Center
3:00 p.m.	Kidz Zone – Recycled Creations	Little Wind Center
5:00 p.m.	Free Stage Entertainment Begins	Free Stage
5:30 p.m.	“Awesome Sauce” Contest	Fremont Center - Kitchen
5:30 p.m.	Pee Wee Dairy Goat Showmanship followed by: Pee Wee Meat Goat Showmanship followed by: Pee Wee Dairy Cattle Showmanship	East Ring: Show Lawn West Ring: Show Lawn
6:00 p.m.	County 10 Youth Jackpot Market Lamb Show	East Ring: Show Lawn
6:00 p.m.	Carnival Midway Attractions Opens	Midway

<p>7:30 P.M. PRCA RAM RODEO PRESENTED BY FREMONT MOTORS</p> <p>“TOUGH ENOUGH TO WEAR PINK NIGHT” & BENEFIT AUCTION</p> <p>FOR FREMONT COUNTY TOUGH ENOUGH TO HELP CANCER FUND</p> <p>(TICKET REQUIRED) GRAND ARENA</p>

WEDNESDAY, JULY 31 **FREMONT YOUTH DAY**

EXHIBIT BUILDINGS OPEN 12:00 P.M. TO 8:00 P.M.		
8:00 a.m.	Youth Swine Showmanship (4-H: Sr., Int., Jr., FFA) followed by: Youth Breeding Swine Show followed by: Youth Market Swine Show and all other swine classes.	Pork Pavilion
8:00 a.m.	Youth Rabbit Showmanship (Sr., Int., Jr.) followed by: Youth Rabbit Show	Fur & Feathers Pavilion
10:00 a.m. – 7:00 p.m.	Kidz Zone Exhibit Building Open	Little Wind Center
10:00 a.m. – 2:00 p.m.	Kidz Zone Day Care Day	Little Wind Center
12:00 p.m. – 8:00 p.m.	Exhibit Buildings Open for Guests	
3:00 p.m.	Kidz Zone – Miniature Flower Arrangements	Little Wind Center
5:00 p.m.	Free Stage Entertainment Begins	Free Stage
5:30 p.m.	Caramel Craving in place/Judging	Fremont Center - Kitchen
6:00 p.m.	Kidz Zone -Little Hands on the Farm Treasure Hunt	Cottonwood Arena
6:00 p.m.	Pee Wee Rabbit Showmanship	Fur & Feathers Pavilion
6:00 p.m. – 8:00 p.m.	Begin Arrival of Flowers	East Fremont Center
6:00 p.m. – 8:00 p.m.	All Open Horticulture/Vegetable Exhibits in place	Fremont Center
6:00 p.m.	Carnival Midway Attraction Opens	Midway

<p>7:30 p.m. CONCERT</p> <p>CHANCEY WILLIAMS and the YOUNGER BROTHERS BAND</p> <p>OPENING ACT BARCODE 307</p> <p>presented by</p> <p>(TICKET REQUIRED) GRAND ARENA</p>

“8 Days of Awesome!”

106th Fremont County Fair

Presented By Bailey Enterprises

2019 Schedule of Events

(Tentative: Subject to change)

Time	Event	Location
THURSDAY, AUGUST 1 FREMONT FIRST RESPONDERS DAY		
	EXHIBIT BUILDINGS OPEN 12:00 P.M. TO 8:00 P.M.	
7:00 a.m. – 9:00 a.m.	All Open Flowers in Place	Fremont Center
8:00 a.m.	Youth Sheep Showmanship (4-H: Sr., Int., Jr., FFA) followed by: Youth Breeding Sheep Show; followed by: Youth Market Lamb Show and all other sheep classes.	Show Lawn
9:30 a.m.	Youth Poultry Showmanship (Sr., Int., Jr.) followed by: Youth Poultry Show	Fur & Feather Pavilion
9:30 a.m.	Open Flower Show Judging	Fremont Center
10:00 a.m.	Open Horticulture/Vegetable Judging	Fremont Center
10:00 a.m. – 7:00 p.m.	Kidz Zone Exhibit Building Open	Little Wind Center
10:00 a.m. – 7:00 p.m.	Kidz Zone – Make a paper plate farm animal	Little Wind Center
12:00 p.m. – 8:00 p.m.	Exhibit Buildings Open for Guests	
3:00 p.m.	Kidz Zone – Favorite Dessert Contest	Little Wind Center
5:00 p.m.	Free Stage Entertainment begins	Free Stage
5:30 p.m.	Future Cattle Producers of Fremont County Show	West Ring: Show Lawn
5:30 p.m.	Chocolate to Die For in place/Judging	Fremont Center - Kitchen
5:30 p.m.	Pee Wee Sheep Showmanship	East Ring: Show Lawn
6:00 p.m.	Kidz Zone – Sidewalk Chalk Art	Cottonwood Arena- Outside
6:00 p.m.	Carnival Midway Attractions Opens	Midway
6:00 p.m.	Pee Wee Poultry Showmanship	Fur & Feathers Pavilion
6:00 p.m.	County 10 Youth Jackpot Market Goat Show	East Ring: Show Lawn

“Fremont Family Night”

7:30 p.m.

FREMONT NINJA WARRIOR

PRESENTED BY

(TICKET REQUIRED)

GRAND ARENA

FRIDAY, AUGUST 2 FREMONT ENERGY DAY

	EXHIBIT BUILDINGS OPEN 10:00 A.M. TO 9:00 P.M.	
8:00 a.m.	Nation Western Stock Show Catch a Calf Showcase Youth Beef Cattle Showmanship (4-H: Sr., Int., Jr., FFA) followed by: Youth Commercial Cow Contest and Youth Breeding Beef Show followed by: Youth Market Beef Show and all other beef cattle classes.	Show Lawn Show Lawn
10:00 a.m. – 6:00 p.m.	Premium pay-out available	Fair Office (pay window)
10:00 a.m. – 9:00 p.m.	Exhibit Buildings Open for Guests	
10:00 a.m. – 7:00 p.m.	Kidz Zone Exhibit Building Open	Little Wind Center
10:00 a.m. – 7:00 p.m.	Kidz Zone DIY Kite Making	Little Wind Center
10:00 a.m.	King Arthur Flour Baking Contest – Best Muffins	Fremont Center Kitchen
1:00 p.m.	Kidz Zone –Museum Presentation	Little Wind Center
1:00 p.m.	Small Animal Master Showmanship	Cottonwood Arena
3:00 p.m. (or following Beef Show)	Large Animal Master Showmanship	Show Lawn: East Ring
3:00 p.m.	Kidz Zone – “Everything is Awesome!” Lego Building Contest	Little Wind Center
5:00 p.m.	Free Stage Entertainment Begins	Free Stage

“8 Days of Awesome!”

106th Fremont County Fair

Presented By Bailey Enterprises

2019 Schedule of Events

(Tentative: Subject to change)

Time	Event	Location
FRIDAY, AUGUST 2 (CONTINUED)		
5:00 p.m.	Carnival Midway Attractions Opens	Midway
5:00 p.m.	County 10 Youth Jackpot Market Swine Show	Pork Pavilion
5:00 p.m.	Pee Wee Beef Showmanship	West Ring: Show Lawn
5:00 p.m.	Free Stage Entertainment begins	Free Stage
5:30 p.m.	Awesome Monkey Bread Contest	Fremont Center Kitchen
6:00 p.m.	Kidz Zone- Tricycle Races	Little Wind Center
6:30 p.m.	Pee Wee Swine Showmanship (after Jackpot Swine Show) followed by: Adult Swine Showmanship and Jackpot Open Youth Swine Showmanship	Pork Pavilion

7:30 p.m.	WESTERN GRAND NATIONAL TRUCK PULLING SERIES PRESENTED BY FREMONT TOYOTA (TICKET REQUIRED) GRAND ARENA
-----------	--

SATURDAY, AUGUST 3

FREMONT AGRICULTURE DAY

EXHIBIT BUILDINGS OPEN 10:00 A.M. TO 9:00 P.M.		
10:00 a.m. – 9:00 p.m.	Exhibit Buildings Open for Guests	
10:00 a.m. – 6:00 p.m.	Premium pay-out available	Fair Office (pay window)
10:00 a.m.	Junior Livestock Sale	Show Lawn Tent
11:00 a.m.	Begin Arrival and decorating for “Fremont County Cupcake Wars”	Fremont Center Kitchen
12:00 p.m.	Judging of “Fremont County Cupcake Wars”	Fremont Center Kitchen
12:00 p.m.	Carnival Midway Attractions Opens	Midway
12:00 p.m.	Riverton Ranger Ice Cream Freeze Off	Cottonwood Lawn
12:00 p.m.	Show Local talent	Free Stage
1:00 p.m. – 2:00 p.m.	Begin arrival of Cowboy Country Distillers “Cowabunga Cocktails”	Fremont Center Kitchen
1:00 p.m.	Kidz Zone – Fun with Food	Little Wind Center
2:00 p.m.	Cowboy Country Distillers “Cowabunga Cocktails” Judging	Fremont Center Kitchen
3:00 p.m.	Kidz Zone-Themed Art Contest	Little Wind Center
3:00 p.m. – 5:00 p.m.	97.5 KDLY Presents – “Party Like A Rock Star!”	Free Stage
4:00 p.m.	Kidz Zone – Meet the Fremont County Fair Royalty	Little Wind Center
5:00 p.m.	Free Stage Entertainment begins	Free Stage
5:30 p.m.	Most Awesome Home-Made Pizza in Fremont County Contest	Fremont Center Kitchen
6:00 p.m.	Kidz Zone – Fair Obstacle Races	Cottonwood Arena

7:00 p.m.	CALCUTTA FOR DEMOLITION DERBY DRIVERS
7:30 p.m.	RIVERTON ELKS DEMOLITION DERBY PRESENTED BY BAILEY TIRE & AUTO (TICKET REQUIRED) GRAND ARENA

SUNDAY, AUGUST 4

THANK YOU.....HAVE A GREAT FALL!

7:00 a.m.	Begin Release of Livestock	
9:00 a.m. – 4:00 p.m.	Release of Open Exhibits (Quilts at 2: 30 p.m. only)	Fremont Center
9:00 a.m. – 3:00 p.m.	Premium pay-out available	Fair Office (pay window)
2:30 p.m. – 4:30 p.m.	Quilts released	Fremont Center

“8 Days of Awesome!” **106th Fremont County Fair** **Presented By Bailey Enterprises** **2019 Schedule of Events**

(Tentative: Subject to change)

Time	Event	Location
MONDAY, AUGUST 5		
8:00 a.m. – 5:00 p.m.	Continue Release of All Exhibits	Fremont Center
8:00 a.m. – 5:00 p.m.	Premium pay-out available	Fair Office (pay window)

Reminder: All Entry Forms are due Monday, July 8 by 6:00 p.m. at the Fair Office. After this date, all late entries will pay a processing fee of \$10.00 per person/exhibitor until Friday, July 12 at 6:00 p.m. (No late open quilt entries accepted).

Payment Notice: All premiums/cash awards will be paid out by the Fremont County Fair Board on

Friday, August 2	from 10:00 a.m. to 6:00 p.m.
Saturday, August 3	from 10:00 a.m. to 6:00 p.m.
Sunday, August 4	from 9:00 a.m. to 3:00 p.m.
Monday, August 5	from 8:00 a.m. to 5:00 p.m.

Fremont Center, North window

All premiums must be picked up no later than September 27, 2019 or they will be forfeited.

Thank you for your participation in your 2019 Fremont County Fair!

Make your plans now for the 107th Fremont County Fair, July 27 – August 1, 2020.

FREMONT COUNTY FAIR VOLUNTEER OF THE YEAR

2011:	Dennis Mazet – PRCA Rodeo Committee
2012:	Deanna Crofts – Junior Livestock Sale
2013:	Susan Brodie – Junior Livestock Sale
2014:	John Griffin – Friends of Fair, Junior Livestock Sale
2015:	Marybelle Snider – Friends of Fair
2016:	Becky Burrell – Friends of Fair; PRCA Rodeo Committee; Royalty Committee Shawn Steffen – Sponsor; Ranch Rodeo; Spring Fair Sponsor
2017:	Arlie Colva and the Colva Family
2018:	Laura Harrington – Friends of Fair; Eclipse Committee Justin Long – Friends of Fair; Junior Show Advisory Committee
2019:	Dennis Mazet – PRCA Rodeo Committee; Friends of Fair

2019 GENERAL RULES

PRIOR TO MAKING PROPER ENTRY FOR THE FAIR

Specific rules will be found at the beginning of departments, divisions, and classes.

General Rules

1. The Fremont County Fair Board reserves the final and absolute right to interpret these rules and regulations, and their decision will be final.
2. Entries shall be limited to articles produced or made in Fremont County in 2018/2019 and the sole work of the exhibitor; unless noted in the department being entered.
3. All exhibitors **MUST RESIDE IN** Fremont County.
4. Exhibits must be entered online or official entry forms located in this guide. Forms available at the fair office or the extension offices. Junior Show/ Youth Show, 4-H and FFA entry forms must be signed by a parent(s) or guardian(s).
5. Entry tags are to be attached to each exhibit and must remain attached during the entire exhibition. Attach entry tag to the upper left corner of the exhibit when possible. Animals and contest divisions do not receive entry tags. All entry tags must be picked up at the Fair Office. Exhibitors must deliver their exhibits with tags attached to the department superintendent in charge.
6. Any individual entering an article in another name other than that of the bona fide owner, or misrepresenting any facts, shall not be allowed to compete for or receive any premiums and may be barred from any current or future showing.
7. Erroneously entered exhibits may be transferred to the proper division prior to judging by the superintendent of the department.
8. Only one entry per individual will be allowed in any one class; unless otherwise specified in the department division. Only articles for class competition listed in this catalog will be accepted for entry.
9. Exhibitors will at all times, give the necessary personal attention to their exhibits during the fair and take charge of the same immediately after the close of fair.
10. The greatest care possible will be used by the Fremont County Fair to prevent loss, theft, or injury to any articles exhibited. In no case, shall the Fair Board or Fair Management become responsible for any loss by natural causes; fire, theft or injury. Those desiring insurance on the entered articles must make their own arrangements for such coverage.
11. Only amateurs may compete in Open Class for prizes unless otherwise stated. Exceptions will be listed in each Open Class department.
12. Grievances and Protests must be submitted in writing to the Fair Office, for review by the Fair Board.
13. **Anyone removing an exhibit before the release times listed in this 2019 Fair Guide, without written permission from the Fair Board, will forfeit all premiums and privileges as an exhibitor.**
14. Judges will have absolute control in the showing or departments at the time of judging. No exhibitor or spectator may interfere with the judging of exhibits. The judge shall be empowered to give any individual exhibit second or third place even though it may be the only entry in that class. Decision of the judge shall be final, except in the case of fraud or protest.

In consideration of my participation in the Fremont County Fair, I do hereby (for myself or my executors and administrators) waive, release, and forever discharge the Fremont County Fair Board, the Fremont County Fair employees and volunteers, the Fremont County Extension Staff, and the Board of Commissioners of Fremont County from any and all legal claims or liability on my behalf for any loss, damage, or injuries from participation in the Fremont County Fair.

I understand that livestock can be both dangerous and unpredictable, but willingly assume all risk of my participation in the Fremont County Fair. I further understand that I will be responsible for any damage done by my livestock. I agree to abide by current Wyoming State Animal Health regulations and meet the Wyoming Livestock Health and Brand Requirements.

2019 GUEST AND EXHIBITOR REGULATIONS AT THE FREMONT COUNTY FAIR

WELCOME:

The Fremont County Fair encourages your participation in this year's events. The Fremont County Fair Board and fair management look forward to hosting you and your exhibits at the fair grounds and welcomes you to Riverton, Wyoming home of the Fremont County Fair and Rodeo.

FAIR DATES:

The 106th Fremont County Fair will be held at the fair grounds in Riverton, WY, July 27 - August 3, 2019. unless postponed, shortened or extended by the Fremont County Fair Board, all of which they hereby claim and reserve the right to do, for any cause whatsoever, which they may deem necessary for the general good of all concerned.

INTERPRETATION OF POLICY AND REGULATIONS:

The Fremont County Fair reserves to the Fair Board and Fair Management the final and absolute right to interpret these policies and regulations and to arbitrarily settle and determine all matters, questions and differences in regard thereto, or otherwise arising out of or connected with or incident to the Fair, and the right to amend or add to these policies as its judgment may determine. An exhibitor who violates any of the following policies, rules and/or regulations may forfeit all privileges, fees paid; awards and/or premiums won and be subject to such penalty as may be ordered.

LIABILITY STATEMENT:

All exhibitors and exhibits must comply with the policies and regulations of the Fremont County Fair, but the Fair will in no case be responsible for any loss or damage that may occur. Each exhibitor will be solely responsible for any consequential or other loss, injury or damage done to, or occasioned by, or arising from, any animal or article exhibited by him/her and for its description as given in the premium book, and shall indemnify the Fremont County Fair against all legal or other proceedings in regard thereto, as well as damage or injury to any other person or property, caused by the exhibitor, or any of the animals exhibited by him/her, or arising out of, or in any way connected with, such exhibition of any of the animals so exhibited.

Personal Conduct:

The following conduct is prohibited:

1. Any use, possession, or sale of any controlled substance is prohibited.
2. Any use, possession, or sale of alcoholic beverages by minors is prohibited. Consumption of alcoholic beverages is allowed in the beer garden and private campground residences only.
3. Anyone engaging in a fight, disorderly conduct or use of profane language will be removed from the premises.
4. Smoking is allowed in outdoor designated areas only.
5. The wearing or display of any gang related clothing or paraphernalia is prohibited. This includes bandanas, dew rags, colors, or any other items indicating any membership in a gang.
6. Please refer to Junior Livestock Show Rules for acceptable dress code while an exhibitor in competition (in the show ring and sale ring).

MOTORIZED VEHICLES:

Use of any motorized vehicles will be prohibited on the fairgrounds. This includes golf/carts (gas and electric) scooters, motorcycles, and ATV's. Specific exceptions for the Fremont County Fair Board and fair staff. Persons with disabilities and/or specific injuries may request an exemption which is to be requested in person or in writing and approved 30 days in advance of fair dates, by the Fair Board.

LIVESTOCK:

The livestock facilities will be closed to the general public at 10:00p.m. each evening.

VIOLATIONS:

Any violation of these rules will result in removal from the fairgrounds, with no allowance to return for the duration of the current Fremont County Fair.

FIRE REGULATIONS: No Smoking in any buildings, open air or enclosed. No containers containing flammable liquids will be allowed in any buildings. No liquified petroleum fueled or flammable or combustible liquid-fuel generators or other devices are allowed on grounds.

DOGS ON FAIRGROUNDS: The Fremont County Fair Board has established the following Guidelines and Policy for a dog on the fairgrounds during the Fremont County Fair.

1. Dogs entered in fair events, may be on grounds during authorized fair entertainment events and sanctioned county fair dog shows/events. Dogs may be allowed only in a designated camper area of the campgrounds and livestock/rodeo trailer area. Dogs are not allowed outside of these designated areas at any time during the fair.

a. All dogs must be on a leash or immediate verbal control. There shall be no loose or unattended dogs at anytime in the areas designated.

2. All dogs must have current health records documentation, meeting the minimum standards as set by the State of Wyoming, as well as for the City of Riverton, when entering the fairgrounds.

3. No dogs will be permitted in the animal barns or animal show areas at

any time!

4. Commercial exhibitors or vendors may have a dog(s), but only on a leash in their allocated campground space. No food vendors shall have dogs in their food space at any time.

5. While in the designated areas, dog owners or handlers shall be: responsible for clean-up of the animal's excrement, responsible at all times for the control of, noise from, or any damages caused by the dog.

6. There may be one warning given by fair management for any violation, however, upon any subsequent violation, management may have the dog removed from the fairground property at the complete expense of the owner or handler.

These rules will be strictly enforced and apply to exhibitors and their employees, as well as to Fremont County Fair visitors.

Note: These policies do not apply to official service dogs for those individuals with an impairment.

FAIR FACT:

**The most important rule is to have fun during
your Fremont County Fair!**

Make your plans now for your future Fremont County Fair and Rodeo:

2020: July 27 to August 1; 107th edition

2021: August 2 to August 7; 108th edition

2022: August 1 to August 6; 109th edition

(These dates are tentative and subject to change at the discretion of the Fremont County Fair Board)

Good Morning Fremont County!!

FREE 4-H and FFA Exhibitor Breakfast!! **FREE**

In the Little Wind Center

Special Thanks to the 2019 Breakfast Sponsors!
Great Breakfast from Great Sponsors for Great People!

Huelle Ag	Bacon
Matthew Huelle Transport	Bacon
Meadow Gold Dairy Association	Milk & Orange Juice
Fremont County Hay Producers	Cash Donation
Fremont County Cattleman's Association	Cash Donation
Davis Family, Davis Funeral Home	Breakfast Sausage
Wind River FFA50 dozen eggs
Lander FFA	Coffee
Shoshoni FFA	Cash Donation
Riverton FFA	Cash Donation
David Ranch (Lyle & Colleen David; Weston & Emily David)	Cash Donation
D.L. Taylor, Inc.	Cash Donation
Mike & Pricilla Sims	Cash Donation
Todd& Makayla Dawson.....	Cash Donation

Thank You to these special Volunteer Cooks!

**Joe Crofts, Weston David, Colby Erickson,
Brian Helms, Ryan Huxtable, Ivan Laird, Rich Pingetzer
Mike Sims, Elmer Witzel**

2019 FAIRPLEX FACILITY NAMES

NEW NAME

WAS

FREMONT CENTER

OLD ARMORY

HERITAGE HALL

MAIN HALL

LITTLE WIND CENTER

4-H LUNCHROOM

AGRI CENTER

AG BUILDING

FUR AND FEATHERS PAVILION

OLD BEEF BARN

COTTONWOOD ARENA

LUNCHROOM LAWN

Fremont County Fair Department Exhibits

Department

- 1 AGRICULTURE
- 2 ARTS / ARTISANS
- 3 CATS / DOGS / PETS
- 4 CRAFTS
- 5 CROPS / HAY
- 6 CULINARY: FOOD
- 7 FLORICULTURE: FLOWERS
- 8 HORTICULTURE: VEGETABLES
- 9 LIVESTOCK
- 10 NATURAL FIBERS / WOOL
- 11 NEEDLEWORK
- 12 QUILTING
- 13 SPECIAL CONTESTS
- 14 KIDZ ZONE
- 15 BOY SCOUTS / GIRL SCOUTS
- 16 YOUTH: 4-H / FFA
- 17 FFA PROGRAM
- 18 4-H YOUTH PROGRAM

"8 Days of Awesome!"

Fremont County Fair

What's New for 2019!

**New Activities for
"Fremont Family
Day" Sunday, July 28**

New Grand Arena Night Show

New Free Stage Entertainment

**New Horse Show Schedule
On Friday July 19 and
Saturday, July 20**

**New Future Fremont Cattle
Producer Contest**

New Special Contests

New Sponsor Recognition

New Kidz Zone Activities

New Culinary Contests

**No Smoking/No Tobacco/E-cig use
In Buildings and Grandstands**

"Friends of the Fremont County Fair"
is a non-profit public benefit organization governed by its members. The purpose of the organization is to maintain an association of persons interested in promoting, maintaining and improving the Fremont County Fair and the fairgrounds. The Friends of Fair provide volunteer service operate the beer garden and provide direct financial assistance to benefit to the county fair and/or fairgrounds.

Please join our membership to support a great cause and enhance the future of Fremont County!

Membership:

Annual Individual Membership is \$20.00

Lifetime Individual Membership is \$200.00

Please send your check or money order to:
Friends of Fair, P.O. Box 6058,
Riverton, WY 82501.

2019 Friends of Fair Officers:

Chair – Justin Long

Vice-Chair – Marybelle Snider

Secretary/Treasurer – Cinde Pfisterer

Board of Directors: Dennis Mazet

Fair Projects Completed by Friends of Fair:

2006 LED Sign

2007 Sound System

2009 Ticket Machines
& Ticket Booth

2010 Bath House Upgrade

2011 Tree Planting

2012 Tree Planting

2013 100th Year Awards

2014 Aluminum Bleachers

2015 Fremont Center Flooring

2016 Bleacher Upgrades

2017 Equine Stalls

2018 Ipad, Computer & Groomer

2019 Fremont County Fair and Rodeo Sponsors

(As of May 1, 2019)

Bailey Enterprises

Fremont Toyota

Non-Typical Services & Logistics LLC

RE/MAX All star Realtors

Fremont Motors

Classic Air Medical

Bank of the West

Home Source Realty

Wyoming Custom Meats

Wyoming.com

Wyoming Community Bank

Wind River Hotel & Casino

Boot Barn

Kusels Furniture and Appliance

Wyoming Highway Safety "Buckle Up Campaign"

High Plains Power

Sunnyside Church of the Nazarene

Stotz Equipment

Iron Works Gym

Fremont Broadcasting

**The Fremont County Fair would like to take this opportunity to say
Thank You to the many Sponsors/Partners and Donors that help to
make your Fremont County Fair successful!**

**Please make your plans to be a sponsor/partner for the
107th Fremont County Fair
July 27 to August 1, 2020.**

“8 Days of Awesome!”

2019 FREMONT COUNTY FAIR

Grandstand Schedule and Ticket Prices

Saturday, July 27 – “\$10,000” RANCH RODEO

presented by Non-Typical Services and Logistics, LLC
Admission: Adults \$10.00, Children \$5.00

- *Show starts 7:30 P.M.*

AWESOME FUN DAY!

Sunday, July 28 – FREMONT FAMILY DAY presented by
Friends of the Fremont County Fair

Free Lunch; *Starts at 12:00 noon, Car Racing; Inflatables; Family Fun; Laser Tag
Weiner Dog Derby: \$1 admittance fee

- *Show starts 7:30 P.M.*

Monday, July 29 – PRCA RAM RODEO presented by Fremont Motors

“Military Appreciation Night” & Benefit for
Fremont County Veterans Assistance Fund
Admission: Adults \$12.00, Children \$5.00

- *Show starts 7:30 P.M.*

Tuesday, July 30 – PRCA RAM RODEO presented by Fremont Motors

“Tough Enough to Wear Pink” & Benefit Auction for
Fremont County Tough Enough to Help Cancer Fund
Admission: Adults \$12.00, Children \$5.00

- *Show starts 7:30 P.M.*

NEW!

**Wednesday, July 31 – CONCERT! CHANCEY WILLIAMS and the
Younger Brothers Band! Opening Act – BARCODE 307**

Presented by

Admission: Adults \$12.00, Children \$5.00

- *Show starts 7:30 P.M.*

NEW!

Thursday, August 1 – FREMONT NINJA WARRIOR

presented by Iron Works Gym

Admission: Adults \$12.00, Children \$5.00

- *Show starts 7:30 P.M.*

Friday, August 2 – WESTERN GRAND NATIONAL TRUCK PULLING SERIES

presented by Fremont Toyota

Admission: Adults \$15.00, Children \$8.00

- *Show starts 7:30 P.M.*

Saturday, August 3 – RIVERTON ELKS DEMOLITION DERBY

presented by Bailey Tire and Auto Service

Admission: Adults \$17.00, Children \$8.00

- *Show starts 7:30 P.M.*

2019 Awesome Special: Save \$31 on Adult admission with an “AWESOME FUN PASS”, which is good for all seven evenings of entertainment. Adult Pass buyers get an exclusive chance to win one of three gift certificates, if you buy your PASS **before July 19!**

AWESOME FUN PASS: Adult (13 & over) \$60.00 Until July 19, after July 19 \$75.00.

Wyoming State Fair



GET THE BLUES

August 13-17, 2019 • Douglas, WY

DEFINITIONS FOR FAIR EXHIBITORS

Kidz Zone	For children 8 and under, not enrolled in 4-H.
Youth	Ages 9 through 19.
Adult	Ages 20 and above.
Senior	Ages 70 years or over.
Amateur	Refers to those who have not previously won. The amateur generally does their craft for pleasure and has had little or no training.

Advanced Amateur	Refers to those more advanced than the amateur.
Professional	Refers to those whose work is produced primarily for the purpose of selling; or who have a diploma, certificate, degree, or three or more years of school training; or teach in their media.
Special Needs	Refers to those with chronic disability attributable to either mental or physical impairments or a combination of both.

2019 Fair Premium Table

	1st	2nd	3rd	4th		Total
Table #1	\$10	\$7	\$5	\$3		\$25
Table #2	\$8	\$6	\$4	\$2		\$20
Table #3	\$5	\$4	\$3	\$2		\$14
Table #4 (4-H)	\$4	\$3	\$2			\$9
Table #5 (FFA)	See Department 17 Schedules					
Table #6	See Special Contest payout Varies					

OPEN AGRICULTURAL PRODUCTS

DEPARTMENT 1 - DIVISIONS 101-106

Superintendent: Pam Rivers, Riverton
Begin Arrivals: 2:00 pm, Sunday, July 28
Exhibits in Place: 6:00 pm, Sunday July 28
Release Exhibits: 9:00 am, Sunday Aug. 4
Judging: 9:00 am, Monday, July 29
Premium Table #3

This contest is open to Fremont County agricultural producers to highlight agricultural products produced as a source of nutritional food.

Rules

- Only one entry per class will be accepted.
- Please submit these entries with all other Open Agricultural entries, Sunday, July 28, 2:00 p.m. - 6:00 p.m.
- Cream and milk entries must be displayed in clear glass jars and should be from the entrant's own herd.
- Egg entries shall be from the entrant's own flock. Chicken eggs shall be fresh eggs, no older than 60 days.
- Prepared Eggs must be an appropriate temp. range for food safety. Temp. danger is 42F - 135 F You do not want to deliver your food in these temps.; they need to be either above or below these temps. ***Recipe must accompany the entry.
- Judging will be based on quality of product, cleanliness, and quality of display/presentation.

DIVISION 101

DAIRY PRODUCTS

	CLASS
Butter - 1/4 lb.	001
Churning Cream - 1 pt for butter making	002
Dairy Milk - 1 pt.	003
Goat Milk - 1 pt.	004
Homemade Cheese	005
Homemade Goat Cheese	006

EGGS

Chicken Eggs, White - 6 eggs	010
Chicken Eggs, Brown - 6 eggs	011
Natural Colored Eggs - 6 eggs	012
Goose Eggs - set of 3	013
Duck Eggs - 6 eggs.	014
Largest Domestic Egg (laid this season)	015
Smallest Domestic Egg (laid this season)	016
Largest Exotic Egg (laid this season)	017
Smallest Exotic Egg (laid this season)	018

PREPARED EGGS FOR CONSUMERS

Decorated Egg	019
Dessert Eggs(ex., Meringue cookie, Creme Brulee, Sabayon, Custards, Lemon Meringue, Cheese cake)	020
Pickled Eggs	021

PERSONAL CARE PRODUCTS

Rules

1. Competition is open to Fremont County residents only.
2. Description of item and recipe on 3x5 card, attached to the item.

Handmade Soap	025
Handmade Facial Creme	026
Any Other Product	027

OPEN BEES & HONEY

Department 1 - Division 102

Superintendent – The Colva Family

Begin Arrival: 7:30 am, Monday July 29

Exhibits in Place: 10:30 am, Monday July 29

Judging: 3:00 pm, Monday July 29 Release

Exhibits: 9 am, Sunday Aug. 4

Premium Table #3

Rules

1. If you are bringing live bees, please contact Arlie Colva to arrange an arrival time and assistance.

Class Description:

Class:

Caucasian bees, queen with brood in a single comb observation hive 001

Italian bees, queen with brood in a single comb observation hive 002

Case of white comb honey exhibition grade 003

1/2 doz. - 1 lb. Jars of white chunk honey 004

1/2 doz. - 1 lb. Jars of water white extract of honey 005

Display of honey 006
(may include comb, chunk, or extracted)

Display showing the value of bees to agriculture 007

Display showing the use of honey 008

Light yellow beeswax, not less than two pounds 009

Display showing the uses of beeswax 010

Display of home prepared foods in which honey is the only sweetening or preserving agent 011

Attractive, interesting, and instructive exhibit of the beekeeping industry, may include bees, honey, beeswax, products made with honey; pollen etc. 012

FREMONT COUNTY BEER

Department 1 - Division 103-104

Superintendent - Pam Rivers, Riverton

Begin Arrival: 2:00 pm, Sunday July 28

Exhibits in Place: 6:00 pm, Sunday July 28

Judging: 2:30 pm, Monday July 29

Release Exhibits: 9 am, Sunday Aug. 4

Premium Table #3

Rules

1. Competition is open to Fremont County residents only.
2. Beer must be exhibited in fifth -750 ML only.
3. Traditional bottles must be used with traditional caps.
4. Submit two bottles, one for judging and one for display.
5. Please place your entry tag on one bottle and the special beer label (available at the Fair Office) on the second bottle. The second bottle will be identified by the exhibitor number not name.
6. You may make unlimited entries per class, as long as each is specifically different (such as stout, lager, and mead).
7. Beers may be made in 2016, 2017, or 2018.

BEER

Amateur: Division 103

Class:

Ale 001

Lager 002

Stout 003

MEAD

Amateur: Division 103

Class:

Floral 004

Other 005

BEER SHOW AWARDS AND DONORS BEST BEER EXHIBIT

Service Sprinkler and Landscaping presents an award to The Best Overall Beer Exhibit.

WINE OF FREMONT COUNTY

Department 1 - Division 105-106

Superintendent - Pam Rivers, Riverton

Begin Arrival: 2:00 pm, Sunday July 28

Exhibits in Place: 6:00 pm, Sunday July 28

Judging: 2:30 pm, Monday July 29

Release Exhibits: 9 am, Sunday Aug. 4

Premium Table #3

Rules

1. Competition is open to all Fremont county residents.
2. Wine must be exhibited in a fifth -750 ML bottle only.

3. Traditional bottles must be used with cork or screw tops.
4. Submit two bottles, one for judging and one for display.
5. Please place your entry tag on one bottle and the special wine label (available at the Fair Office) on the second bottle. The second bottle will be identified by the exhibitor number not name.
6. You may make unlimited entries per class, as long as each is specifically different (such as one black berry, one strawberry, and one raspberry).
7. Wines may be made in 2017, 2018, or 2019.
8. Examples of berry: Chokecherry, Blackberry, etc.
Examples of fruit: Apple, Pear, Plum, etc.

Judging Criteria and Scoring

Category	Scale
Color	0-3 pts
Clarity	0-3 pts
Bouquet	0-3 pts
Body/Texture	0-3 pts
Finish	0-3 pts
Taste	0-3 pts
Percent Alcohol	0-3 pts

SWEET

Amateur: Division 105		Professional: Division 106	
	CLASS		CLASS
Berry	001		001
Grape	002		002
Flower	003		003
Fruit	004		004
Vegetable	005		005
Other	006		006

DRY

Amateur: Division 105		Professional: Division 106	
	CLASS		CLASS
Berry	007		007
Grape	008		008
Flower	009		009
Fruit	010		010
Vegetable	011		011
Other	012		012

SPECIAL EVENT

Friends of the Fremont County Fair will host a special public Wine Tasting in the Fremont Center, 6:00 p.m. Friday, August 2. Samples of all entries will be available, along with several winning surprise wine entries, to be tasted for a voluntary nominal fee to support Friends of the Fair programs.

OPEN ARTS/ARTISAN DEPARTMENT 2

Begin Arrival: 10:00 am, Thursday, July 25
Exhibits in Place: 7:00 pm, Thursday, July 25
Release Exhibits: 9:00 am, Sunday, August 4
Judging: 9:00am, Saturday, July 27

Premium Table #3

General Rules

1. Professional entries are expected to be original work. Amateurs, adult and youth, may exhibit original work or use patterns appropriate to class description.
2. Articles exhibited in this department must have been completed within the last two years and never have been shown at this fair in order to compete for premiums.
3. One entry per class may be made.
4. Definitions of Youth, Amateur, Advanced Amateurs, Adult and Professional:

PROFESSIONAL refers to those who derive significant income from art and who work is produced primarily for the purpose of selling; **OR** who have a diploma, certificate, degree, or three or more years of school training; **OR** teach in their art media.

ADVANCED AMATEUR refers to those who have exhibited and won first prizes in accredited or recognized shows (State Fair); **OR** who have had professional schooling but have not completed more than three years.

ADULT refers to those who are 20 years of age or older.

AMATEUR refers to those who have not previously won first prizes AND have had little or no schooling.

TEEN refers to those who are 13 to 19 years of age, as of July 1, 2019.

YOUTH refers to those who are 9 but have not reached their 13th birthday, before July 1, 2019

5. All applications for entry will be made directly on entry forms included in the back of this book, or online **Please type or print clearly.** Mailing in forms ahead of time or entering online will insure less confusion and less time waiting.

ENTRY INFORMATION: When filling out the entry form, the Class code must include the Department Number, the Division Number, and Class Number. **EXAMPLE:** If you are entering a watercolor in the Scenery Class, Amateur status, your class entry would be 202-008 (202 for Amateur Division, and 008 for Watercolors, Scenery). **All exhibits must have artist's name, division, and class number on the back.**

6. Judges shall consider entries on basis of: 1) Content and appropriateness of class 2) Compositions 3) Technical quality 4) Overall presentation. Choose categories carefully for appropriate judging. **ONLY one entry per class may be made.** If multiple entries have been made in the same class one will be disqualified or reclassified prior to judging. Any entries, which have been made inadvertently or erroneously, may be reclassified by experienced Arts/Artisan staff.

**OPEN FINE ARTS:
DRAWING, PAINTING, SCULPTURE
Division 201-204**

**Superintendent: Bonnie Eder, Riverton
Premium Table #3**

Rules

1. All Adult entries in this class must be framed and wired for hanging. Please note: Youth entries must also be mounted on cardboard, matted and have string for hanging; (framing is optional but must be wired for hanging if framed).
2. Each exhibitor may have two entries per class.
3. No entries will be accepted unless wired for hanging
4. Articles in this department must be the exhibitors original artwork and must have been completed within the past three (3) years.
5. Refer to General Rules for definitions of Youth, Professional, Amateur, and Advanced Amateur. Professional in this division is "anyone who has sold work for \$2,000 or more during any one year" or has won "Best of Show" in Advanced Amateur.
6. Miniatures – 2 dimensional – image no bigger than 50 square inches.
Miniatures – 3 dimensional – exhibit (including base) must fit in a 6"x 6"x 6" box.
7. If you have won a champion rosette in Amateur or Advanced Amateur, you must advance to the next level.

Division 200: Professional
Division 201: Advanced Amateur
Division 202: Amateur
Division 203: Teen
Division 204: Youth

DRAWING	CLASS	PAINTING	CLASS
Charcoal	001	Acrylic	005
Ink (Pen & Ink)	002	Oil	006
		Pastels	007
Pencil/Colored Pencil	003	Watercolor	008
Any Other Drawing	004	Other Paints	009

Mixed Media	010
Three Dimensional	011
Miniature Two Dimensional (Any Media)	012
Miniature Three Dimensional (Any Media)	013

SCULPTURE	CLASS
Bronze	014
Any Other Material	015

FINE ARTS AWARDS AND DONORS

BEST IN SHOW: Fremont County Fair will present Best of Show rosettes to the best overall entry as determined by the judges, in each of the following: Painting, Drawing, and Sculpture at each proficiency level, Professional, Advanced Amateur, Amateur, Teen and Youth.
PEOPLE'S CHOICE AWARDS: Fair guests may vote for the one entry (which they like best) in each of the following categories: Painting, Drawing or Sculpture. Fremont County Fair will award a rosette to the most popular entry in each of the categories.

ARTISTS CHOICE AWARD: Artists who enter the show may vote for one painting, one drawing or one sculpture, other than their own, which they like best in any category. One special rosette will be awarded by the Fremont County Fair to the most popular choice
FAIR CHAIR'S CHOICE AWARD: The Fremont County Fair Board will award one special rosette to one painting, one drawing or one sculpture chosen by the Fremont County Fair Board Chairperson as their particular favorite.

RIVERTON ARTISTS GUILD will present "Way To Go" Awards to one entry in the Youth, Amateur and Advanced Amateur divisions.

**OPEN VISUAL ARTS: PHOTOGRAPHY
Division 205-208**

Superintendent: Linda Drewry

Begin Arrival: 10:00 am, Thursday, July 25
Exhibits in Place: 7:00 pm, Thursday, July 25
Release Exhibits: 9:00 am, Sunday, August 4
Judging: 9:00 am, Saturday, July 27
Premium Table #3

Rules

1. Exhibitors may only enter one exhibit per class.
2. **No captions; hanging attachments, frames or glass**
3. **Size: no photos smaller than 5" x 7" and no larger than 11"x 14".**
4. All photos must be mounted on mount board. Foam board is acceptable. Poster paper will not be accepted. Entire exhibit including mount board must not exceed 11" x 14". Larger sizes will not be accepted.
5. Photos may be matted or unmatted. No oval photos will be accepted.

6. Please label the back of each exhibit in the lower right corner with your name and address. Attach entry tag with tape on the back to the bottom left of photo. Please attach dot velcro tabs (hook side) at the top two corners on the back of photo and one dot in the center of bottom of photo.
7. These exhibits should be taken to the Fremont Center and checked in with the Superintendent.
8. Youth exhibitors are to be 9 to 12 years of age, as of July 1, 2019. Teen exhibitors are to be 13 - 19 years of age as of July 1, 2019.
9. Digital exhibits must not be manipulated except for those entered in the Digital Contest. All digital entries may be cropped and sized. Digital contest to include a before photo.

Division 205: Youth
Division 206: Teen
Division 207: Amateur - Adult
Division 208: Special Contests

COLORED PHOTOS

	CLASS
People, candid	001
Portrait	002
Wildlife	003
Animals; Pets	004
Plants/Flowers	005
Agricultural	006
Landscape	007
Any Other Photo	008

BLACK & WHITE

	CLASS
People, candid	009
Portrait	010
Wildlife	011
Animals; Pets	012
Plants/Flowers	013
Agricultural	014
Landscape	015
Any Other Photo	016
Story Telling Series:	017

A sequence of 4-5 pictures, mounted together, to tell/show a story. Photos may not be entered in another class.

DIGITAL CONTEST

Rules

1. Photos entered in this contest must be accompanied by an index card with an explanation of manipulations which have been made to the photo digitally. Manipulations may include placement, proportion, color enhancement (Photoshopped), etc. Please include a before photo of the manipulated photo.

	CLASS
Digital Contest	018
Best Camera Phone "Selfie"	019

VISUAL ARTS AWARDS AND DONORS

BEST IN SHOW: Fremont County Fair will present Best of Show rosettes to the best overall entry, as determined by the judges, in each of the following: Colored; Black & White; Digital at each proficiency level, Amateur, Teen and Youth.

PEOPLE'S CHOICE AWARDS: Fair guests may vote for the one entry, which they like best, in each of the following categories: Colored; Black & White; Digital. Fremont County Fair will award a rosette to the most popular entry in each area.

MY FAMILY "EXPLORING FREMONT COUNTY" PICTURE

Division 208

Qualifies for Theme Contest

Rules

1. Exhibit shall consist of one picture taken of the family group. Extra credit for Fremont County landmark photo.
2. No Professional photos are allowed
2. May be matted and framed, without glass.
3. These items shall be placed through five places to qualify them for the Theme Contest.

	CLASS
Picture of My Family	001

THEME PICTURES

"8 Days of Awesome!" FREMONT COUNTY
 Division 208

Qualifies for Theme Contest

Rules

1. Exhibit shall consist of one picture taken by the exhibitor.
2. May be matted and framed, without glass.
3. These items shall be placed through five places to qualify for the Theme Contest.
4. Please list where in Fremont County photo was taken.
5. Top three photos will become the property of the Fremont County Fair for promotional use.

	CLASS
Picture must be of "Awesome" FC Landscape	002
Picture must be an "Awesome" Fair site	003

FREMONT COUNTY CATTLEWOMEN'S PHOTO CONTEST

Division 208

Photos in Place: 9 am - 6 pm, Friday, July 26;
Agri Center

This contest is designed to stimulate interest and public awareness of the BEEF CATTLE INDUSTRY.

Rules

1. The subject is the beef cattle and/or cattle industry with the photo depicting some aspect of the industry (Example: feeding, corral activities, livestock grazing, cow/calf, agricultural landscape).
2. Open to all interested photographers.
3. Entries limited to three (3) per contestant.
4. Photos may be in color; black & white or digital.
5. Winning entries become the property of the Fremont County Cattlewomen to be used in BEEF PROMOTION.
6. Photo size: minimum 8" x 10" to maximum 11" X 14".
7. Photo must be matted, but should not be framed.
8. Please attach dot velcro tabs (hook side) at the top two corners on the back of photo and one dot in the center of bottom of photo.
9. Identification label must be attached to the BACK of the photo. Include your name, address, phone number, type and model of camera used.
10. Submit entry forms or enter online by Monday, July 8 at 5 p.m. Items tags may be picked up on Friday, July 19.
11. There are no premiums for this contest.
12. Individuals can pick up their photos on Sunday Aug. 4 any item not picked on this date will be take to the Fair Office for pick up.
13. Deliver pictures to the Cattlewomen's booth in the AgriCenter, Friday, July 26, 9:00 am - 6:00 pm. For further information, please contact Janet Givens, Arapahoe, at 307-856-6310.

	CLASS
Cattlewomen's Photo Contest	004

Awards will be given for

1. Ag Production - Cow(s) must be in picture
2. Ag Industry
3. People's Choice

OPEN ARTISAN Division 209-221 Superintendent: TBD

Begin Arrival: 10:00 am, Thursday, July 25
Exhibits in Place: 7:00 pm, Thursday, July 25
Release Exhibits: 9:00 am, Sunday, August 4
Judging: 9:00 am Saturday, July 27
Premium Table #3

Rules

1. Professional entries are expected to be original work. Amateurs and youth may exhibit original work or use patterns appropriate to class description.
2. Article exhibited in this department must have been completed within the last three years and never have

been shown at this fair in order to compete for prizes.

3. One entry per class.
4. Refer to Department General Rules for definitions of Youth, Adult Amateur, Advanced Amateur and Professional.

GEOLOGY Division 210-211

On an index card, identify where item was found and what it is. Display each piece individually.

Division 210: Youth (Classes 001-010)

Division 211: Adult (Classes 011-020)

SINGLE PIECE ENTRIES	YOUTH	ADULT
Agates/Jaspers	001	013
Fossil	002	014
Rocks as found	003	015
Minerals	004	016
Petrified Wood	005	017
Crystal	006	018

(Place all pieces in one display)

MULTIPLE PIECE ENTRIES

Agates/Jaspers	007	019
Fossil	008	020
Rocks as found	009	021
Minerals	010	022
Petrified Wood	011	023
Crystal	012	024

LAPIDARY Division 212-214

Lapidary is the art of cutting, shaping and polishing of a stone or cabochon.

Division 212: Youth (Classes 001-009)

Division 213: Amateur (Classes 010-018)

Division 214: Advanced Amateur/Professional (Classes 019-027)

CABOCHON ONLY*	Youth	Amateur	AdvAm/Pro
Not Set	001	010	019
Handcrafted Jewelry	002	011	020
Set in Commercial Mount	003	012	021
Wire Wrapping	004	013	022
Any Other Item	005	014	023

* Cabochon may be any size, but must conform to a commercial template.

FREE FORM STONE

	Youth	Amateur	AdvAm/Pro
Not Set	006	015	024
Handcrafted Jewelry	007	016	025
Wire Wrapped Stone	008	017	026
Any Other Item	009	018	027

POTTERY

Division 215-218

Division 215:	Special Needs (Classes 001-006)
Division 216:	Youth (Classes 007-015)
Division 217:	Amateur (Classes 016-024)
Division 218:	AdvAm/Pro (Classes 025-033)

	Special Needs	Youth
Utilitarian	001	007
Decorative	002	008
Combined Form	003	009
Hand Built	004	010
Novelty	005	011
Sculpture	006	012
Burnished		013
Raku		014
Mixed Media		015
Ceramics	040	041

	Amateur	AdvAm/Pro
Utilitarian	016	025
Decorative	017	026
Combined Form	018	027
Hand Built	019	028
Novelty	020	029
Sculpture	021	030
Burnished	022	031
Raku	023	032
Mixed Media	024	033
Ceramics	042	043

SILVER SMITHING

Division 219-221

Silversmithing is the art of soldering two pieces of metal together.

Division 219:	Youth (Classes 001-005)
Division 220:	Amateur (Classes 006-010)
Division 221:	AdvAm/Pro (Classes 011-015)

	Youth	Amateur	AdvAm/Pro
w/Cabochon	001	006	011
w/Free Form Stone	002	007	012
w/Faceted Stone	003	008	013
w/No Stones	004	009	014
Any Other Item	005	010	015

ARTISANS AWARDS AND DONORS

Riverton Gem and Mineral Society provides \$20.00 cash awards to top Artisans.

GEOLOGY - President's Choice

LAPIDARY - President's Choice

SILVERSMITHING - President's Choice

Artisan Sweepstakes receive a complimentary one year membership in the Riverton Gem and Mineral Society

BEST OF SHOW - Fremont County Fair will present Best of Show Rosettes to the best overall entry in Geology, Lapidary, Pottery and Silversmithing

NATURAL FIBER ARTS

Department 2 Division 222-240

Coordinator: TBA

Premium Table #3

Rules

1. All entries must be made with fibers which are at least 60% natural and finished within the last year.
For all types of natural fibers from animal sources only.
2. Maximum of two entries per class
3. Attach a 3x5 card with each exhibit which lists the material(s) used, technique(s) used, and intended use. This card is required to be judged.
4. A participant may enter as Amateur in a class, if they (1) have had little or no training, (2) do their craft for pleasure, and (3) have not been paid to teach a workshop or class in fiber arts.
5. A participant may enter as Advanced Amateur, if they 1) have had experience completing a variety of fiber art projects, 2) have not taught a fiber arts class, and 3) have not put fiber art items up for sale.
6. A participant should enter as a Professional if they (1) do not meet the criteria of amateur (2) primarily produce their work for sale, and (3) have taught fiber arts classes or workshops.
7. Handspun entries must be handspun by the exhibitor and the same for woven entries.
8. Superintendent reserves the right to change classes on any item if entered into an inappropriate category.
9. Collaborations: When entering in the 1-2 or 3-4 person categories, enter under one name on the entry form and fill in the other names on the entry tag before check in. Under the group category, enter under the group's name. Entries are eligible for the Overall Grand Championship, but not individual Best of Show awards

HAND SPUN: Division 222-224**Division 222: Amateur****Division 223: Advanced Amateur****Division 224: Professional**

	Knitted	Crocheted	Woven	Any Other
Garment	001	005	009	013
Accessory	002	006	010	014
Miniature	003	007	011	015
Any Other	004	008	012	016

HAND SPUN YARN: Division 225

	Wool	Any Other Fiber	Fiber Blend
Single	001	004	007
Plied	002	005	008
Novelty	003	006	009

COMMERCIAL FIBER: Division 226-228**Division 226: Amateur****Division 227: Advanced Amateur****Division 228: Professional**

	Knitted	Crocheted
Garment	001	013
Hat	002	014
Scarf	003	015
Bag	004	016
Socks/Gloves	005	017
Blanket	006	018
Rug	007	019
Decorative Accessory	008	020
Baby Blanket	009	021
Baby Clothes/Accessories	010	022
Shawls	011	023
Any Other	012	024

HOLIDAY: Division 229-231**Division 229: Amateur****Division 230: Advanced Amateur****Division 231: Professional**

	CLASS
Tree Skirt	001
Table Runner	002
Wall Hanging	003
Stocking	004
Ornament	005
Any Other	006

**HOOKED - ANY TYPE
Division 232-234****Division 232: Amateur****Division 233: Advanced Amateur****Division 234: Professional**

	CLASS
Rug - Small (3x4ft)	001
Rug - Larger than 3x4ft	002
Decorative Accessories	003
Any other	004

FELTED: Division 235-237**Division 235: Amateur****Division 236: Advanced Amateur****Division 237: Professional**

	CLASS
Garment	001
Scarf	002
Hat	003
Bag	004
Footwear/Gloves	005
Rug	006
Wall Hanging	007
Painting, 5"x7" and under	008
Painting, 8"x10" and larger	009
Sculpture, up to 6" in ht.	010
Sculpture, 6" and over	011
Any other felted	012

RECYCLED: Division 238-240**Division 238: Amateur****Division 239: Advanced Amateur****Division 240: Professional**

	CLASS
Garment	001
Accessory	002
Decorative	003
Rug	004
Any other item	005

WOVEN: Division 241-243

Division 241: Amateur

Division 242: Advanced Amateur

Division 243: Professional

CLASS		CLASS	
Garment	001	Blanket	006
Accessory	002	Pillow	007
Decorative	003	Wall Hinging	008
Scarf	004	Miniature	009
Rug	005	Any other item	010

FIBER ARTS AWARDS AND DONORS

BEST OF SHOW: Fremont Fiber Arts Guild presents a cash award to the best over all entry, as determined by the judge(s), in: Best of Show Knitted/Crocheted; Best of Show Handspun; Best of Show Felted; Best of Show Advanced Amateur; Best of Show Amateur

BEST OF SHOW - Fremont County Fair will present Rosettes to the Best of Show in each of the divisions listed above.

NATIVE AMERICAN ARTISANS

Division 246-248

Superintendent: TBA

Begin Arrival: 7 am to 7 pm, Thursday, July 25

Exhibits in Place: 7:00 pm, Thursday, July 25

Release Exhibits: 9:00 am, Sunday, August 4

Judging: 9:00 am Saturday, July 27

General Rules

1. All exhibits should be reflective of Native American designs.
2. Beaded items must use traditional glass beads; seed beads or cut beads may be used if noted on entry.

Division 246: Youth

Division 247: Amateur/Adult

Division 248: Professional

	CLASS
Small Beaded Item	001
Medium Beaded Item	002
Large Beaded Item	003
Afghan	004
Applique's	005
Metal Art Work	006
Flower Arrangement	007
Quilt	008

Wall Hanging	009
Painting	010
Drawing	011
Any Other Item	012

NATIVE AMERICAN ARTISANS

AWARDS AND DONORS

Best Beaded Item Rosette and \$15 award
and

Best of Show (Judge's Choice)
..... Rosette and \$20 award
presented by Friends of Fremont County Fair

METAL ARTS: Division 250-252

Division 250: Youth

Division 251: Amateur/Adult

Division 252: Professional

CLASS

Small Piece	001
Medium Work	002
Large Work	003
Mixed Media	004

OPEN CAT / DOG / POCKET PET DEPARTMENT 3 DIVISION 301- 305

OPEN CAT SHOW DIVISION 301

Begin Arrival: 8:45 am, Saturday, July 27

Cats In Place: 9:30 am, Saturday, July 27

Judging: 9:30 am, Saturday, July 27

Cottonwood Arena

Premium Table #3

Rules

1. Exhibitors are to be familiar with and agree to abide by the General Policies and Rules of the Fremont County Fair.
2. Kittens must be 4 months old to 8 months old to show.
3. See regulations and guidelines from the 4-H Cat Show.
4. Wyoming State Animal Health requirements are to be met for all cats.
5. Judge's Choice is the best overall entry in the show as determined by the show judge.

Kitten Classes (4-8 months of age)

001 Long-haired Kitten

002 Short-haired Kitten

003 Best Kitten Rosette

Adult Classes (9 months of age or more)

004 Purebred, long-haired male

005 Purebred, long-haired female

006 Purebred, short-haired male

007 Purebred, short-haired female

008 Household Pet, long-haired male

009 Household Pet, long-haired female

010 Household Pet, short-haired male

011 Household Pet, short-haired female

012 Best Adult Cat Rosette

013 Best Opposite Sex cat Rosette

Cat Fun Classes

014 Coolest Cat in Fremont County

015 Longest Tail

016 Shortest Tail

017 Oldest Cat

018 Most Colorful Cat

019 Best Purring Cat

020 Best Trick

021 Best Costumed Cat w/ Best Decorated Cat
Cage

024 Judge's Choice: Best Cat of Show

OPEN DOG SHOW DIVISION 302

**Superintendent - Carrie Jo Calvert, Lander
Becki Weber, Shoshoni**

**Dogs in Place: 7:30 am, July 27, Show Lawn
Open and 4-H Dog Agility Class Measurements**

Open Dog Show: 10 am, Show Lawn

Judging: 8 am, Saturday, July 27,

**Grand Arena Release: Upon Completion of Show
Premium Table #3**

Rules

1. Fremont County 4-H members enrolled in the dog project are not eligible to enter these open show classes.
2. Dogs exhibited in the Open Obedience Division must be shown by owner.
3. Refer to the 4-H Dog Division for approximate description of exercises.
4. Two entries per class per exhibitor are allowed.
5. There will be not bait (dog treats) used in agility and obedience classes.
6. The Agility Competition is Open to Wyoming residents with the exception of Fremont County 4-H dog members as noted in rule #1.
7. Exhibitors will compete for ribbons and related premiums as noted in the premium table. No other awards will be provided unless donor sponsored.

OBEDIENCE

CLASS

001 Pre-Novice

002 Novice

003 Graduate Novice

004 Open

005 Utility

CONFORMATION

006 Sporting group

007 Hound group

008 Working group

009 Terrier group

010 Toy group

011 Non-sporting group

012 Herding group

013 Any other purebred dog not listed

014 Mixed

SHOWMANSHIP - DIVISION 302

1. Each handler will compete in classes depending on handlers age. The winners of the categories will compete for BEST HANDLER. The dog must be owned or co-owned by the handler or a member of the family. Handlers are judged on how the dog is handled, as well as the grooming of the dog.
2. Judging will be on the basis of the exhibitor's ability to present the dog for judging, including movement and positions of the animal, condition and cleanliness of the dog as its related to being shown. Dress, manners, and conduct of the exhibitor are also included.
3. Exhibitors will be judged on a total of 100 points. 60% will be on showing, courtesy, moving animals, setting up, proper use of equipment and promptness. 20% will be on fitting, cleanliness, clipping/blocking and condition of animal. 20% will be on appearance of exhibitor, neatness, appropriate attire, and cleanliness.

CLASS

015 Youth Showmanship 9-18 years of age

Champion Youth Showman Rosette

016 Adult Showmanship 19 and over

Champion Adult Showman Rosette

**WELCOME
EXHIBITORS**

OPEN DOG AGILITY AND DOG RALLY DIVISION 303-304

Superintendent - Carrie Jo Calvert, Lander

Begin Arrival: 7 am, Saturday, July 27, Show Lawn
Dogs in Place: 7:30 am, July 27, Show Lawn
Agility Judging: 8 am, Saturday, July 27,
Grand Arena

OPEN DOG AGILITY DIVISION 303

1. AKC rules will be used as guidelines, however WY 4-H Dog Show rules will also apply.
2. All dogs will be measured at check in time
3. This Agility Competition is Open to Wyoming residents with the exception of Fremont County 4-H Dog members who are not eligible.

	CLASS
Agility Level 1	001
Agility Level 2	002
Agility Level 3	003
Agility Level 4	004
Agility Level 5	005
Agility Level 6	006

OPEN DOG RALLY - DIVISION 304

1. Judging of classes will be done with AKC rules as guidelines, however WY 4-H Dog Show rules will also apply.
2. Exhibitors can enter a single dog in only one rally class:
3. Dogs soiling in the ring will be disqualified.
4. All dogs must enter and leave the ring on a leash. Those competing in on-leash classes should do so with a 6-foot leash.
5. Collars may be flat-buckle (leather or nylon) or choke-chains.
6. No bait (dog treats or toys) is allowed in the ring.

CLASS	
001	Novice
002	Intermediate
003	Advanced

REMEMBER: For the latest schedule of events and information please go to the website at fremontcountyfair.org and watch the fair Facebook page.

OPEN POCKET PET SHOW DEPARTMENT 3 DIVISION 305

Entries Due: Monday July 8, 6:00 p.m.

Begin Arrival: 2:30 pm, Saturday, July 27
In Place: 3 pm, Saturday, July 27
Show: 3 pm, Saturday, July 27
Location: Cottonwood Lawn
Premium Table #3

Rules

1. Pocket Pet classes are open only to qualified Fremont County residents. Entries are due by 6:00 p.m., Monday July 8
2. Pocket Pets are considered to be any small rodent, bird, amphibian, reptile or any other special creature that an exhibitor has as a pet or as a special project. Cats, dogs, poultry, and rabbits are not eligible.
3. Pocket Pets are to be brought to the Fair on Saturday, July 27. Animals must check in at the Cottonwood Lawn; with the Show Superintendent for show information and materials.
All Pocket Pets are to be brought in the day of the show and taken home upon completion of the show.
4. All Pocket Pets must be confined to an ESCAPE PROOF CAGE OR CONTAINER, suitable for that particular species, while they are on the fairgrounds. Exhibitors must provide their own cages. It is the total responsibility of the exhibitor to provide for the health and welfare of the animal while at the Fremont County Fair.
5. Exhibitors may be asked to discuss and have a knowledge of their pet and may be asked to handle their pet at the judge's discretion.
6. Any pet showing signs of illness will be removed from the grounds immediately, at the discretion of the Show Superintendent.
7. Animals must be owned by the exhibitor by July 1, 2019 to show at the Fremont County Fair.
8. Youth Exhibitors: exhibits in class 005 cannot be the same as any current 4-H static exhibit in Pocket Pets.
9. Ribbons provided for each Pocket Pet exhibit.
10. Judges' Choice Award for Best Exhibit shall be determined by the show judge.
11. Enter Dept. 3, Division 305, Class_____.

CLASS

- | | |
|-----|--|
| 001 | Pocket Pet: Bird |
| 002 | Pocket Pet: Rodent |
| 003 | Pocket Pet: Reptile |
| 004 | Pocket Pet: Any Other Pet |
| 005 | Display; Scrapbook or Notebook about the pet |
| 006 | Judge's Choice.....Rosette; \$5 cash award |

OPEN CRAFTED ARTS

DEPARTMENT 4

DIVISION 401-416

Superintendent - Mary Ellen Roylance

Begin Arrival: 10 am, Thursday, July 25

Exhibits in Place: 7 pm, Thursday, July 25

Release Exhibits: 9 am, Sunday, Aug. 4

Judging: 9 am, Saturday, July 27

Premium Schedule # 3

Rules

1. All exhibitors will abide by all applicable policies of the Fremont County Fair. Read special department policies.
2. ALL APPLICATIONS FOR ENTRY WILL BE MADE DIRECTLY ON ENTRY FORMS included in the back of this guide or online. PLEASE TYPE OR PRINT CLEARLY. Pre-entry is not required but having forms submitted ahead of time will insure that entry tags will be available when entries are brought in for display. Entries due Monday July 8, 6:00 p.m.
3. Professional and advanced amateur entries are expected to be original work. Amateurs and Youth may exhibit original work or use commercial kits or patterns appropriate to class descriptions.
4. Articles exhibited in this department must have been completed within the last two years and must not have been shown previously at this Fair, in order to compete for premiums. Exhibitors entering borrowed or purchased article's as their own handiwork must be so identified with the name of the creator and title of the original work being submitted with the article. Failure to comply with this policy will be considered an attempt to defraud and shall be sufficient reason to permanently exclude the guilty party from this exhibition. This policy applies to all exhibitors.
5. Choose categories carefully for appropriate judging. Any entries which have been inadvertently or erroneously entered may be reclassified by experienced staff
6. **All exhibits must have exhibitor's name; department, division and class number on the back or beneath the exhibit.** Exhibit must also be marked as an Original or Kit.
7. There are three (3) proficiency levels in each of the divisions; with the exception of Taxidermy and Hobby Collections.

PROFICIENCY LEVEL DEFINITIONS:

PROFESSIONAL refers to those who derive significant income from crafted art and whose work is produced primarily for the purpose of selling; **or** who have a diploma, certificate, degree or three or more years of school training or teach in their crafted art media.

ADVANCED AMATEUR refers to those who have exhibited and won first prizes in accredited or recognized

shows (including Wyoming State Fair); **or** who have had professional training or education but have not completed more than three years.

AMATEUR refers to those who have not previously won first prizes **and** have had little or no training in the exhibition area.

YOUTH refers to those who are 9, but have not reached their 19th birthday before July 1, 2019.

SPECIAL NEEDS refers to those with chronic disability attributable to either mental or physical impairments or a combination of both.

Exhibitors may enter into a higher proficiency level (except Professional) if they feel qualified to compete, however, an exhibitor cannot go to a lower level.

CRAFTED ARTS

Division 401-402

Division 401: Adult (Classes 001-048)
Division 402: Youth (ages 9-18) (Classes 050-098)
Division 403: Special Needs (Classes 100-132)

CLASS ADULT YOUTH SP. NEEDS

BEADWORK

Small item (Jewelry related)

Hand-made Beads	001	050	
Manufactured Beads	002	051	
Any Other Beaded Item	003	052	100
(holiday ornament, beaded purse, etc.)			

COMBINED TECHNIQUE

2 or more craft techniques in object	004	053	
--------------------------------------	-----	-----	--

GLASS ART (Fusing, slumping, blowing, etc.)

Stained Glass	005	054	
Etched Glass	006	055	
Any Other Glass Art	007	056	

FLY TYING

3 Flies	008	057	
---------	-----	-----	--

HOLIDAY CRAFTS

Christmas Decorations	009	058	101
Any Other Holiday Decor	010	059	102

HOME DECOR

Wreath, non-seasonal	011	060	103
Wreath, holiday	012	061	104
Swag, any type	013	062	105

HORN/ANTLER ART

Horn/Antler Carving	014	063	
Any Other Horn/Antler Art	015	064	106

METAL

Decorative	016	065	
Furniture	017	066	
Any Other	018	067	107

MOSAICS

019	068	108
-----	-----	-----

PAPER CRAFTING

Collage	020	069	109
Origami/Kirigami	021	070	110
Paper Airplanes	022	071	
Scrapbook Pages (3+ pages)	023	072	111
Seasonal Cards (3)	024	073	112
Greeting Cards (3)	025	074	113
Any Other Paper Item	026	075	114

CLASS**ADULT YOUTH SP. NEEDS****PAINTED OBJECTS**

Abstract	027	076	115
Living Things (people, plants, animals)	028	077	116
Scenery	029	078	117
Painting (Oil & Acrylics)			118

RECYCLED OBJECT OR RE-CREATED OBJECT

(A "before" picture must be provided with display)

Re-create any object or material for a different purpose	030	079	119
---	-----	-----	-----

SCULPTURE

Representational/Folk	031	080	120
Non-representational/ Abstract	032	081	121
Bronzing, small	033	082	
Bronzing, large	034	083	

TEXTILE ART OR FABRIC ART

Dyed or painted, any technique	035	084	122
-----------------------------------	-----	-----	-----

TOYS AND GAMES

036	085	123
-----	-----	-----

WEARABLE ART

Duct Tape item	037	086	124
		087	125

WEAVING

Loom	038	088	126
Non-Loom, to include Basketry & Braiding	039	089	127

GARDEN DECOR

Kinetic Art/Art in Motion (Wind sculpture/mobile/wind chimes)	040	090	
Garden Accents (Stakes, stepping stones, statues, etc)	041	091	128
Wall Hangings	042	092	129
Bird Houses/Bird Feeders	043	093	130

LEGOS

No kits are allowed. Creations need to be glued in key places and be able to be transported and displayed without coming apart.

Transportation	044	094	131
People/Animals	045	095	132
Buildings	046	096	133
Any other (scenery, abstract, etc.)	047	097	134

ANY OTHER CRAFTED ART

Functional	048	098	135
Decorative	049	099	136

JEWELRY
Division 404-406

Division 404: Professional/Advanced Amateur
(Classes 001-009)

Division 405: Amateur/Adult (Classes 010-018)

Division 406: Youth (Ages 9-18) (Classes 019-025)

ALL JEWELRY MUST BE MOUNTED FOR DISPLAYING.
NOT KITS!

Non-traditional: Handcrafted items using polymer or water-based clays, plastics, glass, etc.

Fabricated: Created by manipulating wires, sheet metal and stone using traditional fabrication techniques such as bending, forging, sawing, soldering, etc.

Cast: Created using traditional casting techniques such as centrifugal, vacuum, cuttlebone. No commercial waxes or casting allowed.

Note: Written note on 3"X5" card to be attached explaining techniques and materials used.

CLASS	PRO/ADV AM	AM/AD	YOUTH
-------	------------	-------	-------

NON-TRADITIONAL JEWELRY

Necklace/Pendant	001	010	019
Earrings	002	011	020
Bracelet/Rings	003	012	021
Set (2 or more matching pieces)	004	013	022

CLASS	PRO/ADV AM	AM/AD	YOUTH
-------	------------	-------	-------

FABRICATED JEWELRY

Necklace/Pendant	005	014	023
Earrings	006	015	024
Bracelet/Rings	007	016	025
Set (2 or more matching pieces)	008	017	026

CAST JEWELRY	009	018	027
---------------------	-----	-----	-----

LEATHERCRAFT Division 407-409

Division 407: Professional/Advanced Amateur (Classes 001-007)
Division 408: Amateur/Adult (Classes 008-014)
Division 409: Youth (Ages 9-18) (Classes 015-021)

CLASS	PRO/ADV AM	AM/AD	YOUTH
Horse Gear (Bridles, breast collars, whips, reins, etc.)	001	008	015
Saddles	002	009	016
Picture, Embossed or 3-D (Must be framed)	003	010	017
Picture, Carved or Tooled (Must be framed)	004	011	018
Personal Items (Purses, handbags, billfolds, wallets, checkbook covers, etc)	005	012	019
CLASS	PRO/ADV AM	AM/AD	YOUTH
Home Decor Item	006	013	020
Wearing Apparel (Chaps, chinks, shirts, vests, hats, gloves, belts, jewelry, etc.)	007	014	021

WOODCRAFT Division 410-412

Division 410: Professional/Advanced Amateur (Classes 001-006)
Division 411: Amateur/Adult (Classes 007-012)
Division 412: Youth (Ages 9-18) (Classes 013-018)

1. Exhibitors may enter two (2) entries per class.

CLASS	PRO/ADV AM	AM/AD	YOUTH
Furniture/Construction	001	007	013
Wood Burning	002	008	014
Wood Carving	003	009	015
Wood Sculpture	004	010	016
Wood Turning	005	011	017
Any Other Wood Item	006	012	018

COWBOY CRAFTS Division 413-415

Division 413: Professional/Advanced Amateur (Classes 001-005)
Division 414: Amateur/Adult (Classes 006-010)
Division 415: Youth (Ages 9-18) (Classes 011-015)

CLASS	PRO/ADV AM	AM/AD	YOUTH
Horsehair Hitching	001	006	011
Rawhide Braiding	002	007	012
Saddle Making	003	008	013
Spur Making	004	009	014
Any Other Cowboy Craft	005	010	015

TAXIDERMY Division 416-417

Division 416: Commercial Taxidermist (Classes 001-007)
Division 417: All Others (Classes 010-016)

CLASS	COMMERCIAL	ALL OTHERS
Bird or Fowl	001	010
Fish	002	011
Small Animal	003	012
Large Animal	004	013
Wyoming Game Head	005	014
Big Game Head	006	015
Any Other Mount	007	016

BEST HOBBY COLLECTION Division 418-419

A collection is a group of objects to be seen, studied, or kept together. Must display ten (10) or more items but NO more than 15 items.

Division 418: Adult (Classes 001-002)
Division 419: Youth (Ages 9-18) (Classes 003-004)

CLASS	ADULT	YOUTH
Best Hobby Collection (Any)	001	003
Best Collection of Cars or Trucks	002	004

CRAFTED ARTS AWARDS AND DONORS

BEST OF SHOW - Fremont County Fair will present Best of Show Rosettes to the best overall entry, as determined by the judges, in Crafted Arts; Jewelry; Leathercraft; Woodcraft; Cowboy Crafts and Taxidermy.

PEOPLE'S CHOICE AWARDS -

Fair guests may vote for one entry, which they like best, in each of the divisions, Crafted Art; Jewelry; Leathercraft; Woodcraft; Cowboy Crafts and Taxidermy. Fremont County Fair Board will present special Rosettes to the most popular entry in each division.

REMEMBER: For the latest schedule of events and information please go to the website at fremontcountyfair.org and watch the fair's Facebook page for current happenings!

FREMONT COUNTY HAY SHOW DEPARTMENT 5 - Division 501

Superintendent: Leane Linnell - Riverton

HAY COORDINATORS:

Chance Marshall- Lander

Alex Malcolm- Riverton

Hay Show Entry Information:

**Entry Forms Due: Thursday July 18 to the
Fair Office from 8 a.m. to 12 p.m.**

**Pick up entry tags and deliver your hay exhibits
or cube box to the AgriCenter on July 18 from
8 am to 12 pm.**

**Tagged Hay Set-up: Thursday, July 25
8 am to 12 pm.**

**Release: Sunday, August 4 - 9 am to 3 pm;
Monday, August 5 - 8 am to 5 pm**

**Hay Exhibits not picked up by August 5 will
become the property of the Fremont County Fair
Board.**

Premium Table #2

Rules

1. Any Fremont County hay producer is eligible to enter hay produced in 2018 or 2019. Hay exhibited in the 2018 County Fair may not be entered again. Exhibitors may make one entry per class. Each hay show entry should represent an actual harvest lot of commercially produced hay.
2. Each entry must be identified as a specific harvest lot and include name and address of owner/exhibitor and the following:
 - a. Harvest Lot (1st, 2nd, 3rd cutting)
 - b. Acres represented by Harvest Lot
 - c. Estimated Tons of Hay from Harvest Lot
 - d. Year produced
 - e. Estimated Total Season Production by Exhibitor
3. For small baled hay classes, three (3) small square bales will constitute one entry. Bales may be wire or string tied.
4. Entries from large bales will be allowed and encouraged. An entry from a large bale package shall consist of a 50 lb. sample in an enclosed box or tote, secured by tape or cord.
5. Hay entered and sampled for County Fair exhibition may be entered at the State Fair. Please review the WSF hay show for 2019
***State Fair Entries must complete the WY State Fair entry form and pay a \$5.00 entry fee. (make checks payable to Wyoming State Fair).**
6. All three bales of each entry will be probed with a hay coring tool by the County Extension Agent to collect a forage sample. An aggregated sample from each entry will be sent by the Agent to a designated lab.
7. Judging factors to be considered will include nutritive content (relative feed value); crude protein; maturity; texture; leaf capture and retention; color; bale con

formation; odor, and freedom from foreign material and mold.

8. Enter Department 5, Division 501, Class _____.

Alfalfa Hay, Baled	CLASS
RFV up to 150	001
RFV 151 to 200	002
RFV 201 to 250	003
RFV 251 and above	004

Mixed Hay, Baled (Legume content 25%, up to 75%)	
RFV up to 140	006
RFV 141 to 180	007
RFV 181 and above	008

Grass Hay (100% grass, <u>no</u> legumes)	
RFV up to 115	010
RFV 116 and above	011

Hay, Cubes (one bushel)	013
--------------------------------	-----

Certified Organic Hay, Baled or Cubed	014
--	-----

(Entries will be placed into appropriate classes as defined above, but judged only against other certified organic hay entries). Entries must be certified Organic under USDA Organic Certification Rules.

Best of Show Exhibit(s)	015
(Judge's discretion)	Rosette
	016

HAY SHOW AWARDS AND DONORS

**Fremont County Fair provides:
Special Cash Awards for each class
1st- \$10, 2nd- \$7, 3rd-\$5;**

**Fremont County Fair Board provides
Rosettes for each Best of Show**

**Alfalfa Hay - Best of Show
Grass Hay - Best of Show
Mixed Hay - Best of Show
Cubed Hay- Best of Show**

OPEN CULINARY DEPARTMENT 6 DIVISION 601-616

Superintendent – Pam Rivers, Riverton
Begin Arrival: 1 pm, Saturday, July 27
Exhibits in Place: 6 pm, Saturday, July 27
Release Exhibits: 9 am, Sunday, Aug. 4
Judging 9 am, Sunday, July 28
Premium Table #3

Rules

1. Youth classes are for exhibitors 9 years to 18 years of age.
2. **8 year olds and younger, please enter "Kidz Zone" Department 14.**
3. **A part of each exhibit will be displayed. Please pick up the remainder of your exhibit immediately after displays are set up**
Any items not retrieved will be discarded.
4. Please exhibit in clear heavy grade plastic bag of the appropriate size, with entry tag attached. Please use plastic plates to show your entry in a pleasing manner.
5. Baked products will be judged on flavor, aroma, texture (crumb, crust, moisture, lightness), and appearance (color, shape and size).
6. All canning exhibits must contain a label on the jar (not lid) with the following information:
Name of Exhibitor
Division, Class, i.e., (601-003)
Name of Product
Process method (boiling water or pressure)
Processing time
Pounds of pressure, if applicable (state: dial or weighted gauge)
Style of pack (raw or hot)
Date processed
Altitude where product was processed at.

BREAD- DIVISION 601

Place exhibits in "plastic bags" to prevent drying out. In order that competition be fair to all exhibitors, loaves of bread must be baked in STANDARD SIZE baking pans unless otherwise specified.

Judging Criteria: Flavor and aroma: even texture; moisture; tenderness; lightness; size; shape. Color: crust, characteristic for ingredients used; inside - free from streaks.

YEAST BREAD (Not Machine Made)

Recipe may be attached to entry if needed,
due to varied ingredients.

	CLASS
White, 1/3 loaf, end cut	001
Whole Wheat, 1/3 loaf, end cut	002
Rye (can be baked in round pan) 1/3 loaf, end cut of loaf	003
Raisin, 1/3 loaf, end cut if loaf	004
Coffee Ring or Loaf, 1/3 ring/end cut loaf,	005

YEAST ROLLS

	CLASS
White Yeast Rolls (3), typical roll form	006
Whole Wheat Rolls (3), typical roll form	007
Any Other Roll Not Listed, (3)	008
Cinnamon Rolls (3)	009
Raised Doughnuts (3)	010

BREAD MACHINE

	CLASS
White, 1/3 loaf, end cut,	011
Any Other than white, 1/3 loaf, end cut (whole, graham, or cracked wheat),	012
Holiday bread, contains fruit and/or nuts, 1/3 loaf, end cut	013

QUICK BREAD

Recipe may be attached if needed, due to varied ingredients.

	CLASS
Banana Bread, 1/3 loaf, end cut	014
Carrot Bread, 1/3 loaf, end cut	015
Date Bread, 1/3 loaf, end cut	016
Nut Bread, 1/3 loaf, end cut	017
Pumpkin Bread, 1/3 loaf, end cut	018
Zucchini Bread, 1/3 loaf, end cut	019
Gingerbread, 1/3 loaf, end cut	020
Baking Powder Biscuits (3)	021
Muffins, Fruit (3)	022
Any other Muffins	023
Any other yeast bread not listed	024
Any other Quick Bread not listed	025

CAKES- DIVISION 602

No commercial cake mixes are to be entered.

Wrap exhibit in clear plastic food wrap to prevent drying out. Put cakes on covered cardboard about 1 inch larger than the cake, no glass plates. **NO professionals in this**

division-amateurs only. Judging Criteria: Flavor, aroma, shape, volume, surface, texture, grain, color.

CAKES

Rules

1. Cakes are to be made from scratch. Commercial mix shall not be used.
2. Cakes are to be exhibited without frosting; except in the Layer Cake iced classes and the "Decorated Cakes".
3. Exhibit: 1/3 layer or 1/3 cake
4. **Gluten Free classes 020-025 attach a recipe .**
5. **Judging Criteria:** flavor, odor, shape, volume, surface, texture, grain, and color.

	CLASS	GLUTEN FREE
EGG CAKES (not iced)		
Angel Food, 1/3 cake	001	020
Sponge Cake, 1/3 cake	002	
Chiffon, 1/3 cake	003	
Pound Cake, 1/3 cake Any	004	
Other Egg Cake, 1/3 cake	005	
BUTTER / OIL CAKES (not iced)		
Layer Cake, yellow, 1/3 cake	006	021
Layer Cake, white, 1/3 cake	007	
Layer Cake, chocolate, 1/3 cake	008	
Sheetcake, yellow, 1/3 cake	009	022
Sheetcake, white, 1/3 cake	010	
Sheetcake, chocolate, 1/3 cake	011	
Spice Cake, 1/3 cake	012	023
Any Other Cake, not listed	013	
Cake Balls, 6 (iced)	014	
Cake Rolls, 1/3 cake, end cut	015	
Cupcakes, 3, (not iced)	016	
LAYERED CAKES (iced)		024
Carrot Cake, iced, 1/3 cake	017	
German Chocolate, iced, 1/3 cake	018	
Any Other Cake, not listed Gluten Free		025

FOOD ART - DIVISION 603

1. Cake, decorated, any shape; cake dummy may be used. Icing and artistic skill only to be judged. This cake can not be entered in any other class or special display.
2. Decorated, carved, special cut foods; fruit vegetable or any other food.

Youth refers to those exhibitors who are 9 years to 18 years of age as of July 1, 2019.

Amateur refers to those who do not generally receive pay for their culinary work and have little or no training for this art. Who are 19 years of age or more.

CLASS	CLASS
Amateur/Adult	Youth

Wedding Cake	001	006
Any decorated cake	002	007
Fruit Art	003	008
Vegetable Art	004	009
Any other food art	005	010

COOKIES - DIVISION 604

1. Each exhibit to consist of 3 cookies; each cookie to be wrapped in clear plastic food wrap to prevent drying out.
2. No frosting.
3. Gluten free classes 020 - 034 require a recipe card attached
4. **Judging Criteria:** Flavor, shape, size, color, texture, (characteristic of type of cookies; crisp, moist, etc.) grain.

COOKIES	CLASS ADULT	CLASS Gluten Free
Brownies	001	020
Chocolate Chip	002	021
Bar Cookies	003	022
Filled Cookies	004	023
Fruit Bars	005	024
Ginger	006	025
Nut Drop	007	026
Oatmeal	008	027
Party (May be frosted)	009	028
Peanut Butter	010	029
Refrigerator	011	030
Sour Cream	012	031
Snickerdoodle	013	032
Sugar	014	033
No bake	015	034
Any other cookie not listed	016	

HONEY PRODUCTS DIVISION 605

Include the amount/percentage of honey in your recipe on your 3"x 5" recipe card.

1. Enter Dept. 6, Division 605, Class _____.

HONEY PRODUCTS	CLASS
Bread	001
Cookies (four)	002
Cakes	003
Candy (six pieces)	004
Canned goods	005



CULINARY SPECIAL CONTESTS DIVISION 606

TABLE SETTING CONTEST

*Qualifies for Theme Sweepstakes

Theme: "8 Days of Awesome!"

80's Theme

Christmas Theme

"Anything Goes" (Formal)

Rules

1. Bring your own small card table.
(No chairs) Set your table up in the Fremont Center.
2. Decorations should be original and follow one theme.
3. Do not bring food or serving dishes.
4. You must submit a typed menu for display with your table.
5. Set the table for two (2).
6. Superintendent has the authority to divide or change classes.
7. If you use fresh flowers, you must see that they stay nice during the entire exhibit week.
8. There will be one overall Champion and Reserve Champion awarded for this contest.
9. The overall top five places shall be selected to allow for scoring in the Families at Fair Sweepstakes Contest, if this contest has been entered by the exhibitor.
10. Menu- Judging criteria: chosen menu items - variety in flavor, texture, color, size, shape, temperature, & general appeal and appropriateness to theme chosen.
11. Enter Dept. 606 Class_____.
12. Judged: Mon., July 29 at 4:00 pm, Fremont Center.

Judging Criteria:

Creativity	20%
Correctness in Setting	20%
Originality	20%
Menu	20%
Extra Effort	20%

Table Setting Contest	Adult	Youth
Theme Table - 80's Theme	003	006
Christmas Theme	004	007
"Anything Goes" Formal	005	008

Special Premiums:

Overall Champion Rosette; \$15

Reserve Champion Overall Rosette; \$10

AWESOME MONKEY BREAD

Premium Table #3

Judged: Friday, August 2 at 5:30 p.m.

Fremont Center, Kitchen

Rules

1. This contest is open to all ages. Adults and youth will be judged separately. Youth - list age on entry tag.
2. Use your imagination and best recipe to make the most delicious Monkey Bread of your choice.
3. Judged on appearance, taste, creativity, texture and recipe originality.
4. All entries judged become the property of the Fremont County Fair.

	Adult	Youth
AWESOME MONKEY BREAD	009	010

AWESOME SAUCE

*Qualifies for Theme Sweepstakes Contest

Premium Table #6

Judged Tuesday, July 30 at 5:30 p.m.,

Fremont Center, Kitchen

Rules

1. Make your favorite Awesome Sauce from scratch. (Sweet or Savory)
2. Prepare 4 servings minimum, with food that your sauce would be served on, for judging.
3. Judged on appearance, taste, creativity, texture and recipe originality.
4. Winners will be photographed and be on display in the Culinary area for the duration of the fair.

	Adult	Youth
Sweet Sauce	011	012
Savory Sauce	013	014

CARAMEL CRAVING

Premium Table #3

Rules

1. Create from scratch, your very best caramel craving food item to be judged by certified caramel cravers!
2. Items will be judged on appearance and taste. Creativity is a bonus.
3. All entries will become the property of the fair (after judging).
4. Judged: Wed., July 31 at 5:30 pm - Fremont Center Kitchen.

	Adult	Youth
Best Carmel Craving Item	015	016

CHOCOLATE TO DIE FOR

Premium Table #3

Rules

1. Make from scratch your favorite chocolate food item for the "Chocoholics: Feast!"
2. Two divisions!
3. Judged by Certified "Chocoholics" experts. Entries judged on appearance and taste.
4. All entries judged become the property of the fair.
4. Judged: Thr., August 1 at 5:30 pm - Fremont Center Kitchen.

	Adult	Youth
Best Chocolate Food Item	017	018



MOST AWESOME HOME-MADE PIZZA IN FREMONT COUNTY

Premium Table #6

Judged: Saturday, August 3, 5:30 p.m.
Fremont Center, Kitchen

Rules

1. This Home Made Pizza should be your very best, your "claim to fame" and bragging rights in Fremont County.
2. Dough must be made from scratch. Recipe must be provided.
3. Added bonus points if you can verify (tag/proof of purchase) use of Wyoming/Fremont County grown products. Entries will be judged on Taste (50%), Appearance (25%) and Nutritional Value (25%). Recipe will assist in nutritional value.
5. Entries will be sampled by the fair guests upon completion of judging.

Most Awesome Home-Made Pizza	Adult	Youth
	023	024

Premiums: 1st - \$10; 2nd - \$8; 3rd - \$6

PIES-DIVISION 607

Premium Table #3

(NO Cream, Custard, Nut, or Pumpkin Pies)

1. Wrap exhibit in plastic bag to prevent drying out. Aluminum pie plates only, no glass containers.
2. **Pie should be 4 inches** to prevent waste.
3. **Judging Criteria: Crust:** Golden brown color; blistered surface; uniform, attractive edges; fits pan well. Cuts easily but holds shape. Flakes layered throughout crust; crisp eating. Pleasant bland flavor.
4. **Filling:** well cooked, neither too dry nor too juicy; flavor characteristics of the kind, free from excessive sweetness or flavor of uncooked starch.

	CLASS
Apple	001
Cherry	002
Berry, any kind	003
Raisin	004
Fruit, any other (no cream or custard)	005
Mince Meat	006
Rhubarb	007
Any Other Pie, not listed	008

KING ARTHUR FLOUR BAKING CONTEST

Enter your best "Muffins"
on Saturday, August 3, 2019
By 10:00 AM.

Judging 10:00 a.m. at the Fremont Center, Kitchen

*Baking With
King Arthur!!*



Bakers this one's for you! King Arthur Flour invites you to compete in the new and exciting "Baking" Contest. We are searching for the best Muffins.

Entry Requirements:

1. Contestants enter three (3) of the same Muffins using King Arthur Flour product.
2. Recipes must be typed or clearly written and submitted with entry form. Include name, address and telephone number on recipe. One submission per family for contest is allowed.
3. Exhibitor must bring the opened bag of King Arthur Flour or submit a UPC label from the flour bag used when submitting entry to qualify.
4. Judging will be based upon taste appeal (50 points), overall appearance and creativity (25 points) and texture (25 points).
5. Present Muffins on a disposable container for judging.
6. Failure to follow the rules may result in disqualification.
7. Recipes become the property of Fremont County Fair.
8. Enter Department 6, Division 606, Class _____.

BEST MUFFINS

CLASS

Adult	025
Junior/Youth	026

PRIZES:

Adult Category

- 1st place: \$75 gift certificate to the Baker's Catalogue/
kingarthurfLOUR.com
2nd place: \$50 gift certificate to the Baker's Catalogue/
kingarthurfLOUR.com
3rd place: King Arthur Cook Book

Junior/ Youth Category

- 1st place: \$50 gift certificate to the Baker's Catalogue/
kingarthurfLOUR.com
2nd place: \$25 gift certificate to the Baker's Catalogue/
kingarthurfLOUR.com
3rd place: 8" Square Brownie Pan

All winners will also receive a
special King Arthur ribbon!

CANDY- DIVISION 608

Premium Table #3

1. Each exhibit to consist of 5 pieces of candy. Wrap each piece in plastic wrap to prevent drying out.
2. All candy must be made at home.
3. **Judging Criteria:** Flavor, appearance, texture, and consistency characteristic of type of candy.

CLASS

Dipped Candies	001
Divinity	002
Fudge, chocolate; nut (no prepared mix or Million dollar recipes allowed)	003
Hard Candy/ Glass Candy	004
Mints, all types	005
Nut Brittle	006
Penuche or Brown Sugar (Sea Foam)	007
Taffy	008
Toffee	009
Any Other Candy not listed	010

PROFESSIONAL CANDY OPEN TO WYOMING

Premium Table #3

Rules

1. Definition of Professional is anyone making candy for a monetary return. Test question: Do you sell candy for a profit? If yes, you are a professional.
2. Exhibit: 6 pieces of candy must be displayed on a plastic plate.
3. All candy must be made in the home.
4. **Judging Criteria:** flavor, appearance, texture, and consistency characteristic of type of candy.

Candy

Pro/CLASS

Caramel	012
Hand Dipped Candies	013
Divinity	014
Fudge (Chocolate, Nut)	015
Glass Candy/Hard Candy, all flavors	016
Mints, all types	017
Nut Brittle	018
Penuche	019
Sea Foam (Brown Sugar)	020
Taffy	021
Toffee	022
Any other candy not listed	023



A notice was received from the Ball & Kerr Fresh Preserving Products that effective summer of 2019, the awards program has been discontinued. The Fremont County Fair Staff is sorry to have lost this great program. We hope that you will continue to participate in the Canning Department by entering your Awesome canned goods!



CANNING DEPARTMENT 6 DIVISION 609-616

Premium Table #3

Rules

1. Each jar requires a label; labels are available at the Fair Office. Please label your jars prior to delivering them for judging. Attach label to back of entry tag.
2. Canned products must have been canned no more than 12 months prior to the current fair entry day. Date canned must be written on the top of lid in permanent marker.
3. Entry must have been canned by the individual entering the item.
4. Use only standard canning jars for all canned goods. These jars must have standard canning seals such as Ball/Kerr canning jars.
5. All canned goods must be correctly labeled. Any incorrectly labeled items may be disqualified.
6. Jars will not be opened for judging.
7. Please read the Judging Guide in this section.
8. Canning guides are available at the Fremont County Extension offices in Lander, Riverton, Wind River or Ft. Washakie.

Judging of Canned Goods:

The following is a three step criteria for judging canned goods. The primary emphasis is on food safety. Food not meeting requirements as outlined in Step 1 will be disqualified. Step 2 also pertains to safety. Step 3 evaluates the quality of the product.

Step One- A single “no” answer is grounds for disqualification.

1. Jar labeled with product name?
2. Jar labeled with process date?
3. Jar labeled with process method?
4. Jar labeled with process time?
5. Jar labeled with process place?
6. Jar adequately sealed?
7. Food processed using correct method?
8. Correct time/pressure for altitude?

Step two- Safety of product- 60%

1. Clean jar used?
2. Outside neck free from food deposits?
3. Standard jar used?
4. Standard seal used?
5. Headspace appropriate for product?
6. Absence of air bubbles?

7. Natural color appropriate for process time/method?
8. Arrangement of jar allows for heat penetration?

Step three- Quality of product- 40%

1. Firm, ripe produce used (none overripe)?
2. Correct proportion of product to liquid (if appropriate)?
3. Color liquid appropriate for product?
4. Uniform shapes and sizes?
5. All products are beneath liquid?
6. Pieces well arranged to space advantage but not over packed?

JELLY - DIVISION 609

Judging Criteria: Flavor, color, clearness, consistency (firm, yet tender and quivery). Use regulation jelly glasses or small canning jars.

Indicate date processed on label. Must be product of the year July, 2018 to July, 2019. Label (see special policies, regulation 8). Please exhibit with canning rings.

JELLY & SYRUPS

Rules

1. Label as to variety of jelly.
2. Jelly or syrup must be exhibited in regulation jelly glasses.
3. Must have been processed in a boiling water bath to be judged.
4. Use only standard jars for canning. Standard refers to quality of jar not to size. Please use jars that are made for canning such as Ball/Kerr; no recycled mayonnaise jars.
5. See judging guide at the beginning of this canning section for additional rules.

VARIETY	CLASS
Apple	001
Buffalo berry	002
Crab apple	003
Cherry	004
Chokecherry	005
Currant, tame	006
Currant, wild	007
Grape	008
Gooseberry	009
Mint	010
Plum	011
Raspberry	012
Strawberry	013
Any Other jelly not listed	014
Syrups (variety on label)	015

PRESERVES, MARMALADE, BUTTER AND JAM DIVISION - 610

Judging Criteria: Flavor, color, clearness, consistency (firm, yet tender and quivery). Use regulation jelly glasses or small canning jars. Indicate date processed on label. Must be product of the year July, 2018 to July, 2019. Label (special policies, regulation 8). Please exhibit with canning rings. **Rules**

1. All jellies, jams, preserves, marmalades and butters must be processed in a boiling water bath to be judged.
2. Paraffin seals will be disqualified.
3. Use only standard jars for all canned goods. Standard refers to quality of jar not to size. Please use jars that are made for canning such as Ball/Kerr; no recycled mayonnaise jars.
4. Use only pint or half pint jars for exhibits.
5. See guide at the beginning of this canning section for additional rules.

VARIETY	CLASS
Apple butter	001
Peach butter	002
Any other butter (variety on label)	003
Blackberry jam	004
Cherry jam	005
Peach jam	006
Raspberry jam	007
Strawberry jam	008
Any other jam	009
Cherry preserves	010
Gooseberry preserves	011
Jalapeno preserves	012
Peach preserves	013
Plum preserves	014
Raspberry preserves, red	015
Strawberry preserves	016
Tomato preserves	017
Watermelon preserves	018
Any other preserves (variety on label)	019
Grape conserve	020
Plum conserve	021
Any other conserve (variety on label)	022
Orange marmalade	023
Rhubarb marmalade	024
Any Other marmalade (variety on label)	025

CANNED VEGETABLES - DIVISION 611

The current USDA Canning Guide will be Official Guide

Rules

1. Use quart, pint, or half pint jars. Use only standard jars.
Standard refers to quality of jar not to size. Please use jars made for canning such as Ball/Kerr jars; no recycled mayonnaise jars.

Judging Criteria: Condition of vegetables; uniformity in size and shape; color; proportion of vegetables to liquid; clearness of liquid. Label (see page 41, rules). Indicate date canned on label. Must be product of the year July, 2018 to July, 2019.

VARIETY	CLASS
Asparagus	001
Beans, string	002
Beans, wax	003
Beets, cut or diced	004
Carrots, sliced or diced	005
Carrots, whole	006
Corn, whole kernel	007
Greens	008
Jalapenos	009
Peas	010
Pumpkin	011
Salad pack	012
Succotash	013
Tomatoes	014
Vegetable juice	015
Any Other vegetable not listed	016

CANNED FRUIT- DIVISION 612

The current USDA Canning Guide will be Official Guide.

Rules

1. Use quart, pint, or half pint jars. Use only standard jars.
Standard refers to quality of jar not to size. Please use jars made for canning such as Ball/Kerr jars; no recycled mayonnaise jars.

Judging Criteria: Shape, color, and consistency of fruit; proportion of fruit to syrup. **Syrup:** density, neither watery nor too heavy; clearness. Must be product of the year of July, 2018 through July, 2019. Label requirements (see page 41, rules). Indicate date canned on label.

FRUITS	CLASS
Apples	001
Applesauce	002
Apricots	003
Assorted Fruits/ Fruit Cocktail	004
Cherries, Bing	005
Cherries, Sour	006
Currants	007
Gooseberries	008
Huckleberries	009
Peaches	010
Pears	011
Plums, Native	012
Raspberries	013
Rhubarb	014

Strawberries	015
Any other fruit not listed	016

CANNED MEAT- DIVISION 613

The current USDA Canning Guide will be Official Guide

Rules

1. Indicate data canned on label. Must be year of July, 2018 through July, 2019. Use standard jars; label with time and pressure used

Judging Criteria: Appearance, size and uniformity of meat pieces; amount of liquid and fat. Label (see general canning rules, page 41)

VARIETY	CLASS
Beef	001
Lamb	002
Pork	003
Sausage (all varieties)	004
Chicken or Turkey	005
Fish (all varieties)	006
Mincemeat	007
Wild Game	008
(deer, antelope, elk, etc. Labels must have specific identification.)	

PICKLES & RELISHES- DIVISION 614

The current USDA Canning Guide will be Official Guide.

Rules

1. Pint or quart jars must be exhibited
2. Must have been processed in a boiling water bath to be judged.
3. Use only standard jars for all canned goods. Standard refers to quality of jar not to size. Please use jars that are made for canning such as Ball/Kerr; no recycled mayonnaise jars.
4. Indicate date canned on labels. Must be product of the year July, 2018 through July, 2019.

Judging Criteria: Flavor. Uniform in size, color, and shape; plump, not shrunken; clear liquid-full without crowding, liquid over top of food in jar, 1/2" headspace. RELISH: mixture of evenly chopped vegetables, uniform in size, shape, color, clear liquid, color-bright and fairly clear, characteristic of kind. Label (see page 41; rule 1). Please exhibit with canning ring.

VARIETY	CLASS
Apple pickles	001
Beet pickles	002
Bread and Butter pickles	003
Chili, sauce	004
Cucumber, oil	005
Cucumber, sour/lime	006
Cucumber, sweet	007
Cucumber, Kosher	008

Dill pickles	009
Fruit Chutney	010
Kraut	011
Mixed pickles	012
Mustard pickles	013
Onion pickles	014
Peach, sweet pickles	015
Piccalilli	016
Sandwich spread	017
Salsa	018
Tomato Ketchup	019
Tomato relish	020
Vegetable relish	021
Watermelon pickles (cubed)	022
Any Other pickle, not listed	023
Any Other relish, not listed	024
Any Other sauce, not listed	025
Any Other vegetable, pickled	026

Salsa Canning Guide:

Procedure: Caution: Wear rubber gloves while handling chiles or wash hands thoroughly with soap and water before touching your face. Peel and prepare chile peppers. Wash tomatoes and dip in boiling water for 30 to 60 seconds or until skins split. Dip in cold water slip off skins and remove cores. Coarsely chop tomatoes and combine chopped peppers, onions, and remaining ingredients in a large saucepan. Heat to boiling and simmer 10 minutes. Fill jars, leaving 1/2 inch head space. Adjust lids and process per recommended time.

SALSA BOILING TIME				
Style of Pack	Jar size	0-1000ft	1001-6000ft	Above 6000ft
Hot	Pints	15 min.	20 min.	25 min.

YOUTH CULINARY - DIVISION 615

Premium Table #3

(Youth Ages 9 to 19 years of age)

Rules:

1. Youth must not have reached their 19th birthday before July 1, 2019.
2. All cookies and candy must be wrapped individually in clear plastic food wrap.

VARIETY	CLASS
Yeast Bread, 1/3 loaf, end cut	001
Wheat Bread, 1/3 loaf, end cut	002
Quick Bread, 1/3 loaf, end cut	003
Machine Bread, 1/3 loaf, end cut	004
Holiday Bread, any kind, 1/3 loaf, end cut	005
Yeast Rolls (3), typical roll form	006
Cake iced, 1/3 cake (if sheet or loaf, enter end cut)	007
Cupcakes (3), not iced	008
Muffins (3)	009

VARIETY	CLASS
Drop cookies (3)	010
Rolled cookies (3)	011
Peanut Butter cookies (3)	012
Sugar cookies (3)	013
Bar cookies (not Brownies) (3)	014
Brownies (3)	015
No Bake cookies (3)	016
Any other cookie (3)	017
Jam (any kind)	018
Jelly (any kind)	019
Vegetables canned	020
Candy, any kind (3 pieces, wrapped)	021
Fruit canned	022
Cucumber Pickles, any kind	023
Cooking with Honey, any item (must have recipe attached)	024
Any Other	025

DRIED FOODS - DIVISION 616

VARIETY	CLASS
Fruits (1/2 cup)	001
Vegetables (1/2 cup)	002
Soup mix (1/2 cup)	003
Fruit Leather (6 pieces)	004
Herbs (1/2 cup)	005
Mushrooms (1/2 cup)	006
Meats (Jerky) (6 pieces)	007



Do you love the Fremont County Fair?

Would you love to see it grow in the future?

Will it be a tradition for you, your kids and grandkids?

**JOIN THE.....
"Friends of the Fremont County Fair"**

**get involved and make a difference
in the Fremont County Fair!**

The Friends of the Fremont County Fair is a non-profit public benefit organization governed by its members. The purpose of the organization is to maintain an association of persons interested in promoting, maintaining and improving the Fremont County Fair and fairgrounds. The Friends of Fair provide volunteer service, operate the beer garden and provide direct financial assistance to benefit the county fair and/or fairgrounds.

Please join our membership to support a great cause and enhance the future of Fremont County!

MEMBERSHIP:

Annual Individual Membership is \$20

Lifetime Individual Memberhsip is \$200.00

**Please send your check or money order to:
Friends of Fair, PO Box 6058
Riverton, WY 82501**

**Payment Notice: All premiums/cash awards
will be paid out by the
Fremont County Fair Board on:**

Friday, August 2	from 10:00 a.m. to 6:00 p.m.
Saturday, August 3	from 10:00 a.m. to 6:00 p.m.
Sunday, August 4	from 9:00 a.m. to 3:00 p.m.
Monday, August 5	from 8:00 a.m. to 5:00 p.m.

FREMONT CENTER NORTH WINDOW.

Premiums will be forfeited if not picked up by September 30, 2019

FLORICULTURE: FLOWERS DEPARTMENT 7

Divisions 701-709

Superintendent – Riverton Garden Club

Early Arrival: 6 pm to 8 pm, Wed., July 31

Arrival: 7 am to 9 am, Thr., Aug. 1

Exhibits in Place: 9 am, Thr., Aug 1

Judging: 9:30 am, Thr., Aug. 1

Release Exhibits: 9 am, Sun., Aug. 4

Premium Table #3

Rules:

1. One entry per class per exhibitor.
2. Stems should be uniform and the blooms of uniform size. Cut flowers should be shown with foliage, if naturally attached to specimen. Remove all leaves under water. No foreign foliage should appear in single variety exhibits. Mixed bouquets should not be entered in the specimen classes. Display the number of stems requested.
3. The container used for specimen of cut flowers should be clear, glass jars suitable to the size of the specimen. The department takes no responsibility for containers brought for exhibits.
4. Exhibitors in this department may replace exhibits with fresh flowers any time during the week.
5. Judging of entries in this department are to be based on the following characteristics: a) cultural perfection, b) true color to type, c) exact number of blooms.
6. Entries must be tagged and checked in with superintendent.
7. If the exhibit needs support or a display stand, the exhibitor must provide.
8. Sweepstakes and Best of Show awards will be determined by the person acquiring the most points by ribbons in this division. Values are Blue: 3 pts, Red: 2 pts, White: 1 pt.
9. Youth Classes – ages 9-18 years. Each exhibit shall be scored as blue, red, or white. Youth are encouraged to enter any floriculture class. Divisions 702, 704, 706, 708 are for youth!
10. No toxic plants or flowers.

Definitions:

Bloom: one individual flower (example: rose)

Spike: several flowers on a long stem (example: gladiolus).

Spray: single stem with terminal buds or flowers and two axillary buds, flowers and foliage. (example: petunia).

Stem: main ascending part of plant, not over 18 inches (example: delphinium)

*** Entries will be judged on uniformity of bloom size and color**

HOW TO HARDEN OFF YOUR FLOWER EXHIBIT

If a flower is to remain fresh throughout the exhibit period, it should be cut no later than the day before it is to be exhibited.

It is generally recognized that afternoon-especially cutting in late afternoon, when the greatest amount of sugar has ascended into the leaves and blooms - as well as a "hardening off" process will help insure a winning entry.

Flower stems should be cut cleanly at an angle with a sharp knife or pruning shears and plunged into deep, hot water: 110 degrees Fahrenheit is ideal. Plunging plants up to their necks in cool water works as well. It is a good practice to carry a bucket of water to the garden and to place each cut specimen in the water at once. Lightly crush the base of woody stems on plants such as lilacs to improve the intake of water. Some flowers, such as Dahlias, and Poppies, need to have the cut tips seared over an open flame.

Following cutting and water treatment, specimens should be placed in a cool, darkened room. After several hours, when the water has come to room temperature, add ice to the water and leave the flower material undisturbed overnight or place flowers in a refrigerator or cooler at a temperature between 38 and 40 degrees for six or more hours before they are to be shown. Flowers prepared in this way improve their substance and will hold their freshness longer.

WINNING SUGGESTIONS BY RIVERTON GARDEN CLUB

Collect flower to be exhibited the evening before and place them in a pail of warm water (110 degrees). Set the pail in a cool place or refrigerate 12 - 24 hours. Be sure to use a very sharp knife to cut the specimen blooms. To exhibit, leave attached as much stem and as many leaves as possible. Do NOT leave any leaves under the water. Check for dirt, bugs and discoloration on the leaf underside. Remove excess blossoms close to the stem, leaving no knobs.

To seal Dahlia and Poppy: dip cuts in boiling water or flame sear, hold flower at angle away from heat. Store in dark, draft free place in deep, warm water for 2 - 4 hours before handling. Preservative is OK. Protect during travel.

Grooming guide: 50 % of stem should be underwater. No foliage below waterline.

Foliage underwater will rot quickly. Remove dead and damaged parts. Disbud single blooms.

Hybrid Tea Rose should be 1/2-3/4 open.

ADULT: DIVISION 701 YOUTH: DIVISION 702

SPECIMENS

CLASS

Agastache (Hummingbird Mint), 3 stems	001
Aster, 3 stems (one or more colors)	002
Bachelor Buttons, annual, 3 stems (one or more colors)	003
Bachelor Buttons, Perennial, 3 stems	004
Bee Balm, Monarda, 3 stems	005
Begonia, Tuberous, 1 flower (can be floated)	006
Begonia, wax, 3 stems	007
Bells of Ireland, 1 stem	008
Calendulas, 3 stems	009
Celosia, any, 1 stem	010
Chrysanthemum, single or double, 1 stem	011
Chrysanthemum, pompon type, 1 spray	012
Clematis, Traditional, 1 stem (can be floated)	013
Clematis, Specialty, 3 stems (can be floated)	014

SPECIMENS

CLASS

Columbine, 3 stems	015
Cone Flowers, Echinacea, single, 3 stems	016
Cone Flowers, Echinacea, double, 3 stems	017
Coreopsis, 3 stems	018
Cosmos, 3 stems	019
Dahlia, giant, over 8" in diameter, 1 bloom	020
Dahlia, any, 3 blooms	021
Dianthus, 3 stems (one or more colors)	022
Daisy, Shasta, double, 3 stems	023
Daisy, Shasta, single, 3 stems	024
Daisy, Glorius, 3 stems (Rudebekia)	025
Daisy, any other 3 stems	026
Delphinium, perennial, 1 stem	027
Everlasting, (any variety), fresh, 3 stems	028
Gaillardia, 3 stems	029
Gladiolus, any	030
Golden Glow, 3 sprays	031
Decorative Grass (3 stems)	032
(display with long stems proportionate to grass heads)	
Hollyhocks, single can be floated in water (3 blooms)	033
Hollyhocks, double can be floated in water (3 blooms)	034
Hydrangeas, 1 stem	035
Lavender, 3 stems	036
Lily, Tiger, 1 spray	037
Lily, Oriental, 1 spray	038
Lily, Asiatic, 1 spray	039
Marigolds, single, 3 sprays with foliage	040
Marigolds, double, under 2.5", 3 sprays with foliage	041
Marigolds, double, over 2.5", 3 sprays with foliage	042
Million Bells (Calibrachoa)	043
Nasturtiums, 3 stems	044
Pansies, 3 stems, (one or more colors)	045
Petunias, single, 3 stems	046
Petunias, double, 3 stems	047
Phlox, perennial, 1 stem	048
Pin Cushion, Scabiosa, 3 stems	049
Poppy, 3 stems	050
Rose, Shrub (own root, not grafted)	051
Rose, Floribunda (grafted; 5 or more flowers per stem)	
1 stem	052
Rose, Hybrid Tea (grafted: 1 flower per stem)	
1 stem	053
Rose, Miniature	054
Snapdragons, 1 spike	055
Sunflower, 1 stem	056
Sweet Peas, annual, 3 stems	057
Sweet Peas, perennial, 3 stems	058
Verbenas, 3 stems	059
Violas, 3 stems	060
Wild Flower, any variety not listed, 3 stems	061
Yarrow, Achillea, any color of 1 variety, 3 stems	062
Zinnias, giant, over 3", 3 stems	063
Zinnias, medium, under 3", 3 stems	064
Zinnias, dwarf (Pompom), 3 stems	065
Any other variety of Annual Flower, not listed, 3 stems (flowers must be named)	066
Any other variety of Perennial Flower, not listed, 3 stems (flowers must be named)	067

POTTED PLANTS

ADULT: DIVISION 703 YOUTH: DIVISION 704

POTTED PLANTS	CLASS
African Violet	001
Coleus	002
Fern	003
Geranium	004
Ivy	005
Hanging plants, flowering, indoor	006
Hanging plants, foliage, indoor	007
Any other flowering indoor plant	008
Succulent or Cactus	009
Fairy or Miniature Garden*	010
Terrarium (3 or more plants)*	011
Desert Garden*	012
Dish Garden*	013
Herbs or Herb garden	014
Potted Flowers, flowering, outdoor	015
Potted Flowers, foliage, outdoor Living	016
Wreath or Sphere	017

*DESCRIPTORS OF CLASSES

Dish Garden - an open/shallow container featuring a variety of plants excluding cacti and succulents.

Fairy or Miniature Garden - a Miniature "scene" contained in an open container and featuring miniature or small, slow growing houseplants. the garden needs to have an imaginative theme and added miniature accessories.

Desert Garden - An open/shallow container featuring cacti and/or succulents.

Terrarium - A transparent container, partially or completely enclosed; sealed or unsealed.

FLOWER ARRANGEMENT

ADULT: DIVISION 705 YOUTH: DIVISION 706

FRESH GARDEN MATERIAL (must not be purchased)

	CLASS
Arrangement over 6 inches	001
Monochromatic palette	002
Miniature, not over 6"	003
Table Center Piece, reflecting the Fair theme	004

DRIED MATERIAL (must not be purchased) **CLASS**

Arrangement over 6 inches	005
Monochromatic palette	006
Miniature, not over 6"	007
Table Center Piece, reflecting Fair theme	008

SPECIAL THEME FLOWER ARRANGEMENT

"8 Days of Awesome!"

Qualifies for Theme Sweepstakes

Rules

1. Use any floral materials; purchased, fresh, combination
2. Use the 2019 Fair Theme any way you choose in the arrangement. This contest is part of the "Theme Sweepstakes" Contest.
3. Only one category may be used for theme points.

"8 DAYS OF AWESOME!" FLORAL THEME CONTEST

ADULT: DIVISION 707

YOUTH: DIVISION 708

CLASS

Home Grown Arrangement with Theme	001
Any Other Arrangement with Theme	002

"THE MAGIC OF MARIGOLDS" CHILDREN'S CHALLENGE DIVISION 709

Sponsored by the Riverton Garden Club

Rules

1. Any child 12 years of age and younger may participate. The child must plant or help with the planting, watering, tending, etc. of the Marigold seeds in a 6 to 10 inch flower pot: Then watch it grow! At fair time enter this contest and then bring the flower pot and flowers to the 2019 fair as a special entry in the Open Class Flower show.

2. Enter Dept. 7, Division 709, Class 001.

CLASS

Marigolds, (in a flower pot)	001
------------------------------	-----

**A Special thank you to the Award Donors and
Sponsors of the 2019 Floriculture Show!**

HORTICULTURE: VEGETABLES DEPARTMENT 8 DIVISION 801-804

Superintendent: Riverton Garden Club
Begin Arrival: 6:00 pm, Wed., July 31
Exhibits in Place: 8:00 pm, Wed., July 31
Release Exhibits: 9 am, Sunday, Aug. 4
Judging: 10:00 am, Thursday Aug., 1
Premium Table #3

Rules

1. One entry per class per exhibitor except in the "ANY OTHER" class where a person may enter three exhibits as long as they are different varieties and identified.
2. All exhibits must have been grown in Fremont County by exhibitor during the current crop year.
3. Vegetables should be fresh and in prime condition for display or eating at the time of judging.

Tips on Exhibiting

1. **Selecting Vegetable for Exhibits** (optimum maturity important)
 - a. Select uniform specimens slightly over average size, when possible. Over-grown specimens are seldom typical and are frequently coarse and lacking flavor.
 - b. Select a few extra specimens above the requirements for the premium list for last minute replacements.
 - c. Showmanship is important. All items in each entry should be uniform in size, shape, color and degree of maturity.
 - d. Avoid blemishes caused by decay, dirt, disease, insects or mechanical injury. If blemishes of any kind are severe enough, the exhibit may be disqualified.
2. **Preparing the Vegetables for Exhibit.**
 - a. Vegetables should be washed only as a last resort. Clean vegetables with a soft brush or facial tissue to remove loose soil.
 - b. The tops of all root crops like carrots and beets should be one inch long.
 - c. Keep the vegetables as fresh as possible before exhibiting.

VEGETABLES, HERBS, & FRUITS DIVISION 801-804

Rules

1. Score Card for Vegetables:
 - Variety and type (trueness to variety)- 10%
 - Uniformity of individual samples- 10%
 - Quality (size for table use, texture)- 60%
 - Condition, marketability- 20%
2. All specimens should be:
 - A. Fresh and of the same variety
 - B. Uniform in color and size (avoid oversized samples)
 - C. Mature, but not overripe
 - D. Free from decay, blemishes, growth cracks, sun scald, wilt or freezing
 - E. Free from damage (worms, insect, mechanical, hail or disease).
3. Enter Dept. 8, DIVISION 801, Class_____.

Term Definitions:

- * **Bunch** - should measure 1 1/2 to 2 inches at point of tie with roots removed.
- * **Full Slip** - the stage of ripeness at which the melon comes away easily from the stem attachment and where the skin begins to take on a slightly yellow appearance under the netting.
- * **Half-Slip** - when the stem attachment area is smooth, rounded and just slightly depressed.
- * **Petiole** - the stalk that joins a leaf to a stem; leafstalk.

SPECIMEN DEFINITIONS:

BEANS – Pods should be well-filled and dark green color.

GREEN SNAP BEANS-There are flat pod and round pod varieties. Pods should be uniform in size and shape, at proper maturity and at prime stage for fresh use or freezing. All pods must be the same length with at least 1/4 to 1/2 inch of stem on each pod. Insect damage, disease and poor trimming are faults.

WAX BEANS- Wax Beans are prepared and displayed like Green Snap Beans. Pods should be uniform in size and shape, at proper maturity to be golden yellow (not beany) and at prime stage for fresh use or freezing. At least 1/4 to 1/2 inch of stem must be present on each pod. Pods must be turgid, free of twisting and true to type.

BEETS, TABLE – Diameter should be 2 – 2 1/2". Side root-lets should be removed, and taproot should be left on. Trim the tops, leaving 1" of leaf stalk above the crown.

BROCCOLI – Heads should be compact, not less than 3" in diameter and dark green. Cut the stems squarely above the first whorl of leave, to give a 5" overall length.

BRUSSEL SPROUTS – All the heads should be firm, compact, and a good green color. Heads not less than 1" in diameter and should be smoothly trimmed to 1/2".

CABBAGE – Heads should be firm, heavy in comparison to size. Midribs should be large and the leaves should not be too closely trimmed. Stem should be evenly trimmed at base of the last leaves left on the head. Leave stem 1/4" long to hold leaves firmly. Trim all but 2 or 3 outer leaves.

CARROTS – Select carrots that are smooth, straight, and free from greening at the top. Specimens should be typical of their variety. Cut off foliage to 1".

CAULIFLOWER – Heads should be pure white and solid. The florets should be close. No leaves should appear throughout the head. Trim the green outer leaves to 1" above the head. Trim the butt or stem to allow 4 top leaves to remain.

CELERY - Celery should be at least 9 inches long from the base of the first leaflet on the outside petiole. Trim off outer stalks that may be damaged. Trim the basal end straight across. Dark green stalks and leaves are desirable. Green, tender petioles tightly held together are desirable.

CORN, SWEET - Ears, should be well formed and filled out to the tip. Kernal should be soft, tender and filled with hick opaque, milky juice. Should be husked and trimmed for judging, free of silks. The shank should be trimmed 1/4" from the base of the cob. The tip of the ear may be neatly clipped, although only a small portion of the cob should be removed; not over 1/2".

CUCUMBER, PICKLING - Cucumbers should be uniform, straight with blunt ends, free of yellow color, not more than 1 1/2 inches in diameter and not more than 6 inches in length. Cut stem 1/4 inch from fruit shoulder. Curved or tapered fruits are undesirable.

CUCUMBER, SLICING - Cucumbers should be 6 to 9 inches long and 1 1/2 to 2 1/4 inches in diameters. Dark green, straight, symmetrical fruit with rounded ends are desirable. Cut Stem 1/4 inch from the fruit shoulder. Fruit must be free of yellow color and flabbiness.

EGGPLANT - Specimen should be smooth, firm heavy but not too large. Select for uniform purple coloring, free from bronzing and greening. Wipe with soft cloth, but do not wash. Trim stem to 1".

GREENS - Greens should be fresh, tender, crisp and free from blemishes.

KOHLRABI - Specimens should not be hard, woody, or pithy. They should be 2 or 3" in diameter and very smooth. Skin should be easily punctured by thumbnail. Clean, but do not wash. Cut off the root portion just below the ball.

LETTUCE, HEAD - Should be crisp, firm, clean and free from damage. Remove loose and damaged outer leaves. Cut off the stem 1/4" from the bottom leaf.

LETTUCE, LEAF - (Butterhead and Cos) - Well developed compact plants with firm crisp, medium-sized heads; remove older, loose, discolored outer leaves; cut stem squarely at base of head, wash thoroughly, perishable.

MUSKMELON, (CANTALOUPE) - Should be fully ripe, picked on "full slip". If several days elapse between picking date and exhibition, they may be picked on "half slip" and permitted to ripen, with stems attached.

OKRA - Pods should be uniform in diameter, length and color, and should be young and tender, not over mature and leathery. Pods may have young seeds, but must be tender. Cut stems 1/2 inch from pod shoulder.

ONIONS, GREEN - Bunches should be 1 1/2 to 2 inches in diameter at point of tie, with full tops and roots clipped to within 1/2 inch of bulb. Bulbs should be 1/2 to 3/4 inches in diameter. Strip loose or yellow leaves to expose clean, white base. The shank should be straight with little or no swelling.

ONIONS, DRY - Bulbs should be uniform in size, shape and color. Ideal bulb diameter is 2 to 4 inches. Cut tops cleanly 1/2 to 1 inch above shoulder of bulb. Do not peel so as to give a slick appearance. Leave one dry, highly colored outer leaf scale. The roots should be trimmed, but not completely removed.

PARSLEY - Free from dirt, yellowing or discolored leaves. Should be fresh, bright green in color. Each bunch should be 2 or 3" at the butt. Trim stems neatly to be 8-10" in length.

PARSNIPS - Roots firm, smooth, tapering evenly, small in diameter (1 1/2 "-1 1/4"), with side roots trimmed. Should be light cream color with the taproot left on. Trim top to 1".

PEAS - Pods should be free, bright green and well filled with tender peas. One-fourth inch of the stem should be left on each pod.

PEPPERS - Sweet green peppers should be healthy green with no reddish blush or other discoloration. Sweet red or yellow peppers should have healthy, clear red or yellow color with no greenish tinges. Leave stem on and trim to 1" long.

PEPPER - (Other than Bell types) Specimens with length, shape and color typical for the variety. Trim stems to 1/2 to 3/4 inch and clean by wiping with soft, dry cloth.

POTATOES - Tubers should be uniform in size, shape and maturity, clean and free of insect or disease damage, injury cracks, sunburn, or greening. Size range should be 6 to 12 ounces. Skin must be firm, well-cured, not peeling and free of soil. Clean by brushing *lightly* or washing to remove soil after tubers are dry. *Do not scrub.*

PUMPKIN - Should have deep, even color, thick-fleshed and heavy in weight for size of specimen. It must also be free of blemishes and dirt with the stem trimmed to 1 inch. Clean by wiping and polishing with a dry cloth or by washing if necessary.

RADISHES, WINTER - The flesh should be crisp and tender, nonpithy. Trim leaf to 1/2".

RHUBARB - All stalks should be uniform in color, shape, size and texture. Each stalk should be at least 1/2"- 1" across its flat face at the center of the length. Length after trimming should be at least 10". Stalks should be tender, crisp, fresh, not pithy, and limp or wilted. Meaty trim and top leaving 1" of leaves and prongs. The stalks should be pulled when harvested, not cut off. The nasal husks should be removed from the bottom of the stalks.

SQUASH, SUMMER - (crookneck, scallop, zucchini, any other) - Fruits must be true to variety and uniform in size, shape and color. Fruits must be picked young while skin is very tender and at prime eating stage. Soft rind (immature) and at prime eating stage. Avoid over-mature, bruised, or misshapen specimens. Leave 1 inch of evenly-trimmed stem attached. Clean by wiping with soft, dry cloth or by washing, if necessary.

SQUASH, WINTER - Fruits must be true to variety and uniform in size, shape and color. Outer rind should be hard and firm. Avoid immature, cracked, or split specimens. Leave 1 inch of evenly trimmed stem attached. Clean by wiping with soft, dry cloth or by washing, if necessary.

TOMATO, CHERRY AND PEAR OR PLUM - Stems (calyx) may be left on, but must be green and fresh. Stems are often removed. Uniformity in size, color, shape and maturity are important. Fruits must be free of cracks and damage. pear and plum tomatoes are prepared and shown in a manner similar to cherry tomatoes.

TOMATO - All fruits must be uniform in every way. Firm, crack-free smooth fruits are desirable. If calyx is left intact, it must be fresh and green. The green calyx adds to the fruit's appearance only if it is fresh. Should be firm, and free of cracks blossom-end rot, insect, disease or mechanical damage. Ripe tomatoes should be in prime condition for slicing; avoid over ripe fruit- deep characteristic color, shape and size. Green tomatoes should be entirely green with no red visible. Do not exhibit red and green tomatoes on the same plate. Leave stems on the pickling or preserving types. Clean by wiping with moist cloth.

TURNIPS - Medium size, 1 3/4" or 2 3/4" in diameter. Flesh should be crisp, fine-grained, and not pithy. Should be clean and bright in color, but not washed. Smooth; firm with secondary roots removed but with 2-3" of tap root remaining. Trim top to 1"

WATERMELON - Melon should be ready to eat, and be smooth and clean. It should be typical of variety in shape and color; mature but not overripe; bright or velvety appearance; ground spot should be yellowish in color and not white or pale green and stem 1 inch long. Clean by wiping with moist cloth.

"Highlight of My Fremont County Garden" VEGETABLES DISPLAY DIVISION 801

Rules

1. Arrange at least 12 vegetables in a display.
2. May be one type, 12 different types, or a combination thereof.
3. Scoring:
 - a. 50% Quality of Vegetables
 - b. 50% Creativity of Display demonstrating Fair Theme

CLASS

Vegetables on Display

001

VEGETABLES: DIVISION 802

	CLASS
Beans, snap green, whole pods (5)	001
Beans, snap, wax, yellow whole pods (5)	002
Beans, Lima, whole pods (5)	003
Beans, any other variety, whole pods (5)	004
Beets, red (3)	005
Beets, any other variety (3)	006
Broccoli, head (1)	007
Brussel sprouts (5)	008
Cabbage, green (1)	009
Cabbage, red (1)	010
Cabbage, any other (1)	011
Carrots, short 4" and under (4)	012
Carrots, long, over 4" (4)	013
Carrots, multi-colored, any size (4)	014
Cauliflower, head, (1)	015
Celery, 1 plant	016
Corn, sweet, yellow (2)	017
Corn, sweet, any other variety (2)	018
Cucumbers, pickling not over 6" (4)	019
Cucumbers, slicing 6" and over (4)	020
Eggplant (1)	021
Greens, any other variety, identified, 2 bunches	022
Kohlrabi (2)	023
Lettuce, heads (2)	024
Lettuce, Leaf 2 plants	025
Muskmelon, Cantaloupe, any variety) (2)	026
Muskmelon, Honeydew (2)	027
Okra (3)	028
Onion, globe white (3)	029
Onion, globe red (3)	030
Onion, globe yellow (3)	031
Onion, any other variety (3)	032
Onion, green bunched (5)	033
Parsnips (3)	034
Peas, green whole pods (6)	035
Peas, any other variety (6)	036
Peppers, Chili Anaheim type (3)	037
Peppers, Chili Jalapeno type (3)	038
Peppers, Chili Cayenne type (3)	039
Peppers, any other hot pepper not listed, identify (3)	040
Peppers, sweet green, Bell (2)	041
Peppers, sweet, any other variety, identify (2)	042
Potatoes, red (3)	043
Potatoes, any other variety, identify (3)	044
Pumpkin, Large 10 lbs and over (1)	045
Pumpkin, Small variety, less than 10 lbs.(1)	046
Pumpkin, decorative (2)	047
Pumpkin, any other (1)	048
Radish - topped (4)	049
Rhubarb Stalks (3)	050
Rutabagas (3)	051
Squash, summer, crookneck (2)	052
Squash, summer, zucchini (2)	053
Squash, summer, other variety (2)	054

Squash, decorative (1)	055
Squash, small, winter, any variety, identify (2)	056
Squash, winter, Acorn (1)	057
Squash, winter, any other, identify (1)	058
Tomatoes, Cherry (3)	059
Tomatoes, Green (3)	060
Tomatoes, Pear or Plum (3)	061
Tomatoes, red, medium, 3 1/2" to 5" in diameter	062
Tomatoes, red, large, 5" to 8" in diameter (3)	063
Tomatoes, red, over 8" diameter (3)	064
Tomatoes, any other variety (3)	065
Turnips, table (3)	066
Watermelon, ripe (or close) (1)	067
Any other vegetable not listed; must be identified (3)	068

HERBS: DIVISION 803

* Any herb used for seasoning, for cooking or food preparation.

*SMALL HERBS are shown on the stock in a bunch 1/2 inch in diameter at the base. If over 1/2 inch diameter, exhibit three stems tie ends of herbs.

*If grown for leaves or flowers, please display in water to retain freshness. (unless otherwise stated) No leaves under water and no yellow leaves.

*Dill stems and umbels (seed heads) should be uniform in size, color and maturity and tied near lower end of stems and again just below seed head.

Tips for preparing Herbs for showing:

There are three ways to exhibit herbs based on their different growth habits and uses.

Bulbs, like garlic and onion, should be fully cured and the outside papery sheath should be left on.

Herbs grown for their leaves, such as basil, oregano, mint and lavender, should be exhibited with their stems in a **container of water**. Leaves should be fresh and tender and free from blemishes, bruises, and insect and disease damage. Many herbs are best when harvested and exhibited before they flower. After herbs flower, the essential oils change and the flavor or scent may not be as desirable.

Some herbs such as dill, caraway, fennel and cumin are **grown for their seeds**. These seed heads should be loosely tied or banded together and **exhibited on a paper plate, not in water**. Seed heads should not have shattered. Stems should be harvested when a full head of seed is present and mature, but still slightly greenish brown so the seeds do not fall off.

There are exceptions, since some **herbs**, such as lavender and chamomile are **grown for their flowers**. The flowers of herbs grown for blossoms should be fresh, of uniform color and development, and free of soil, insect, and disease damage. The stems should have healthy leaves and, as when exhibiting flowers or other herbs **in water**, the leaves below the water line should be removed so they do not rot.

	CLASS
Basil Stalks (3)	001
Chives (1-1 1/2" to 2" bundle) (1)	002
Cilantro Stalks (3)	003
Dill head (1)	004
Fennel Bulbs (1)	005
Garlic bulbs (3)	006
Mint sprigs, stem 6-10" long (3)	007
Parsley Sprigs, stems 6-8" long (3)	008
Rosemary sprigs, stems 6-8" long (3)	009
Sage sprigs, stems 6-8" long (3)	010
Thyme, stems 3-6" long (3)	011
Herb, any other not listed (3)	012

FRUITS: DIVISION 804

Rules

1. Display number of fruit as listed.
2. Berries are to be in 1/2 pint quantities with variety name written on tag. (1/2 pint boxes will be provided)
3. All fruits are to be clean, but not polished and displayed on a plate.
4. Fruits and/or berries should be fresh and in prime condition for eating at the time of judging.
5. Scoring:

Shape	05%
Color	20%
Size	15%
Uniformity	30%
Condition	30%

(free of blemishes and disease)

Apples

	CLASS
Any Red variety, identify (3)	001
Any Yellow variety, identify (3)	002
Any Bicolor variety (red with yellow blush)	003
Any other apple identify (3)	004

Crab Apples

Any variety, identified (3)	005
-----------------------------	-----

Plums

Red or Purple Plums (3)	006
Plums, any other (3)	007

Berries and Other Fruit

Apricots, any variety (3)	008
Blackberries or boysenberries, 1/2 pint box	009
Cherries bush type, 1/2 pint box	010
Cherries, pie or sour, 1/2 pint box	011
Chokecherries, 5 clusters on a stem	012
Currants, any variety on stems 1/2 pint box	013
Gooseberries, 1/2 pint box	014
Grapes, any named variety, 1 bunch	015
Pears, any named variety (3)	016
Raspberries, any variety 1/2 pint box	017
Strawberries, 1/2 pint box	018
Any other fruit, not listed, identify	019

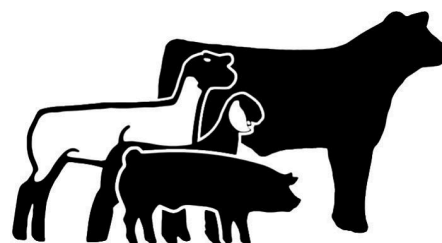
OPEN LIVESTOCK DEPARTMENT 9

Begin Arrival: Varies by Species.
Exhibits in Place: Varies by Species.
Release Exhibits: Varies by Species.
Judging: Varies by Species.

Rules

1. Each interested open class exhibitor is required to familiarize themselves regarding the General Policies and Procedures and abide by all Animal Health Requirements as determined by the State of Wyoming, prior to making application for entry. All animals must have a current Certificate of Veterinary Inspection, in hand, prior to arrival on grounds.
2. Competition is open to all residents of Fremont County. To be eligible to exhibit animals in the Future Cattle Producers Show at the Fremont County Fair youth must be 18 years of age, as of January 1, 2019, and not eligible for 4-H.
3. **Entry Deadline is July 8 2019.** Late entries may be accepted, if space allows, until July 26 at 6:00 pm **NO ENTRIES WILL BE TAKEN AFTER JULY 26.**
4. **ENTRY FORM:** For entry in each class, use the official entry form located at the back of this competition guide. Fill out form completely. When filling out the entry form, the class code must include the DEPARTMENT NUMBER, the DIVISION NUMBER and the CLASS NUMBER. Entries can also be made online, at www.fremontcountyfair.org.
5. Animals exhibited should be purebred or registered on the records of the various Breed Associations, unless shown in Commercial Crossbred division. Partnership owned animals must be entered in the name of the owner appearing on the herd books of registry.
6. Animals are to be shown in their natural conformation. The attempted surgical or non-surgical alteration of conformation of an animal is prohibited, except for dehorning. The use of false tail heads or adding hair, or other material to any part of the animal's body is prohibited. The dying, adding of color, or artificial changing of the existing color pattern and/or color is prohibited.

*See Department 16 for Youth Livestock Jackpot Shows, Exhibitors must be 8 years old to enter.



BREEDER PEN OF 3 MARKET ANIMALS: DIVISION 903

Rules

1. Breeders are requested to enter in advance for no fee before July 26, 2019.
2. Gate entries at time of show will be accepted, in this division only, for a fee of \$5.00; no exceptions.
3. Three market animals in each class must have been bred by one breeder and show in the (4-H/FFA) Youth Livestock Show. Breeder must reside in Fremont County; all animals must have been born and raised in Fremont County.
4. Special Award for Pen of 3 Breeders of Market Hogs, Market Goats, Market Lambs and Market Beef.

Judged: Immediately following respective market shows.

	CLASS
PEN OF 3	
Market Goats	001
Market Hogs	002
Market Lambs	003
Market Beef	004

PEN OF 3 AWARDS AND DONORS

Friends of Fremont County Fair presents an award to each Champion Pen of 3 Breeder/Exhibitor.

FUTURE CATTLE PRODUCERS OF FREMONT COUNTY DIVISION 960

This class is established for those Fremont County Youth who aspire to be a cattle & beef producer in Fremont County, who are not eligible to be a 4-H Member and who are over six years of age.

Written Test Questions with presentation.....	10%
About Wyoming Beef Industry	
Beef Quiz (Bowl) Questions.....	40%
About Beef and Beef Cattle	
Showmanship - Scorecard.....	50%
A. Appearance of Calf.....	40 points
B. Showing of Calf.....	40 points
C. Appearance and Merits of Exhibitor...	20 points
Total	100 points

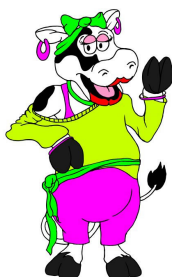
	CLASS
Future Cattle Producers of Fremont County	001

An anonymous donor, who supports the Fremont County Fair, presents a custom made belt buckle to the winner of this class based on total points earned.





The 2019 Fremont County Fair Mascots wish you "Good Luck" on your entries!



Felicia Galloway



Garrett Gruff



Kimmie Porker



Mallory Trotter



M.C Hopper



Axel Snoods



Michael Shepherdson

HAVE AN AWESOME FAIR!

OPEN WOOL AND NATURAL FIBERS DEPARTMENT 10

Superintendent- TBA

Begin Arrival: 7 a.m., Thursday, July 25

In Place: Agri Center 7:00 p.m., Thursday, July 25

Release Wool: 9 a.m., Sunday, Aug., 4

Judging: 9:00 a.m., Saturday, July 27

PREMIUM TABLE #3

The Wool Show encourages improved wool production, stimulates interest and knowledge in the proper preparation of wool for market and informs the public on the versatile uses of wool as a high quality textile fiber.

1. **Entry deadline is Monday, July 8, 2019.** Youth Exhibitors who wish to exhibit in the Open Wool Show must Pre-enter by the entry deadline.
2. Exhibitors will abide by all natural fiber and applicable policies governing the 2019 Fremont County Fair. Please use the Open Class Exhibits entry form in the back of this guide for all wool show entries.
3. Exhibitors may enter two (2) fleeces in any one class, and entries may be made in as many classes as desired. An individual fleece may be entered in one class only. Youth exhibitors may enter the Open Show, but must have different fleeces in each division.
4. After screening and judging, some fleeces may be removed, so that the higher placing fleeces can be properly displayed for public view during the fair. **ELIGIBILITY OF FLEECES:** Each fleece must: (a) have been grown in Fremont County by a resident wool grower; (b) have been shorn in 2017 or 2018 (fleeces entered in the 2018 County Fair or State Fair, cannot be entered again); and (c) represent 12 months growth or less; yearling fleeces will be allowed 16 months growth (d) Wether fleeces are to be entered in the Ram Fleece class only.

CRITERION: Fleeces shall be faulted for: (a) not being placed in a clear plastic bag; (b) paints or tar brands (soluble branding fluids allowed); (c) excessive dung locks or tags; (d) moisture discoloration; (e) being cotted; (f) a break or weak staple; (g) excess burrs or vegetable matter. Fleeces showing black fiber will be disqualified.

PREPARATION OF FLEECES: Spread out the fleece on a clean table or floor, skin side down, taking care not to pull or open fleece as it is handled. Before rolling, remove all heavy tags, stained wool, and obvious foreign matter. Roll the fleece in four steps: (1) Begin at one side and loosely fold 8 to 10 inches of the edge toward the center of the fleece. (2) Do the same on the other side, but fold toward the center two times-until the twice folded portion lies on top of the first fold. (3) Fold in the head wool. (4) Roll from the breach toward the shoulder and long side wool. Fleece is now ready to be placed in a clear plastic bag. There should be no loose ends hanging from the fleece. It should be loose enough to make judging easy, yet compact enough to not fall apart when handled.

5. If a fleece is from a purebred sheep, write the breed and gender of the sheep on a 3x5 card and attach it to the entry tag.

General Guidelines:

Fine Wool	
64's & Finer	Rambouillet / Merino
Medium Wool	
60's-64's	Targhee / Columbia
56's-60's	Suffolk / Hampshire / Texel / Finn
Long Wool (coarse)	
56's-58's	Corriedale / Leicester / Romney
54's-48's	Coopworth
46's & less	Cotswold / Lincoln
Hair	Churro / Karakal

6. All fleeces must be delivered to the Agri Center by 6:00 p.m., Thursday, July 25. Fleeces will be released at 9 a.m., Sunday, August 4.
7. Enter Department, Division and Class (e.g. Youth Fine Wool, Ewe Fleece : Dept. 10, Division 1002- Class-002)



PUREBRED WOOL - DIVISION 1001 - 1002

CLASS ADULT DIVISION 1001 YOUTH DIVISION 1002

- 001 Fine: 64's - 80's - Ram Fleece (17-22 microns)
 002 Fine: 64's - 80's - Ewe Fleece (17-22 microns)
 003 1/2 Blood: 60's - 62's - Ram Fleece (22.05-24.94 microns)
 004 1/2 Blood: 60's - 62's - Ewe Fleece (22.05-24.94 microns)
 005 3/8 Blood: 56's - 58's - Ram Fleece (24.95-27.84 microns)
 006 3/8 Blood: 56's - 58's - Ewe Fleece (24.95-27.84 microns)
 007 1/4 Blood: 50's - 54's - Ram Fleece (27.85-31.0 microns)
 008 1/4 Blood: 50's - 54's - Ewe Fleece (27.85-31.0 microns)
 009 Meat Breed - Blackface - Ram Fleece
 010 Meat Breed - Blackface - Ewe Fleece
 011 Meat Breed - Whiteface - Ram Fleece
 012 Meat Breed - Whiteface - Ewe Fleece
 013 Any Other Purebred - Ram Fleece
 014 Any Other Purebred - Ewe Fleece
 015 **Champion Purebred Ram Fleece Rosette**
 016 **Champion Purebred Ewe Fleece Rosette**

COMMERCIAL WOOL - DIVISION 1003 - 1004

CLASS ADULT DIVISION 1003 YOUTH DIVISION 1004

- 017 Ram Fleece 64's or finer
 018 Ewe Fleece 64's or finer
 019 Ram Fleece 62's - 60's; 1/2 Blood
 020 Ewe Fleece 62's - 60's; 1/2 Blood
 021 Ram Fleece 58's - 56's; 3/8 Blood
 022 Ewe Fleece 58's - 56's; 3/8 Blood
 023 Ram Fleece 54's - 50's; 1/4 Blood
 024 Ewe Fleece 54's - 50's; 1/4 Blood
 025 **Champion Commercial Ram Fleece..... Rosette**
 026 **Champion Commercial Ewe Fleece Rosette**
 027 **GRAND CHAMPION FLEECE OF SHOW**
 Rosette
 028 **RESERVE GRAND CHAMPION FLEECE OF SHOW..... Rosette**

Each Champion fleece from the Purebred and Commercial divisions shall compete for the Grand and Reserve Grand Champion Fleece of Show.

NATURAL COLORED SPINNING WOOL DIVISION 1005 - 1006

This show is for high quality natural colored fleeces intended for hand spinners use.

1. Use the Open Class entry form in back of this guide for all wool entries. Entries are open to Fremont County Producers and due by **July 8** in the Fair Office.
2. Definition of color, "White is White, everything else is Colored."
3. Fleeces must be skirted and should be very clean. Fleece will be shown in clear plastic bags: tying fleece is optional. Fleece on display for sale must be entered and shown.

ADULT DIVISION 1005 YOUTH DIVISION 1006 CLASSES

Fleece Classifications (Spinning Count)

Fleece Color	Fine 64's & Finer	Medium 58's to 62's	Coarse 56's & Less	Hair
White	001	002	003	004
Colored	005	006	007	008

- 009 **GRAND CHAMPION NATURAL COLORED FLEECE OF SHOW** Rosette
- 010 **RESERVE GRAND CHAMPION NATURAL COLORED FLEECE OF SHOW** Rosette

NATURAL FIBERS - DIVISIONS 1007-1008

ADULT DIVISION 1007 YOUTH DIVISION 1008

CLASS

- 001 Alpaca
002 Llama
003 Mohair (white)

CLASS

- 004 Mohair (colored)
005 Cashmere
006 Angora Rabbit

OPEN NEEDLEWORK & SEWING DEPARTMENT 11 DIVISION 1101 - 1132

Superintendent –Barb David , Riverton
Begin Arrival: 7 am, Thursday, July 25
Exhibits in Place: 7 pm, Thursday, July 25
Release Exhibits: 9 am, Sunday, August 4
Judging: 9 am, Saturday, July 27
Premium Table #2

Rules

1. All articles exhibited must be completed, mounted, stuffed, etc.
2. Wall hangings and pictures must be prepared for display hanging. Please be sure your hanger is attached securely.
3. Articles exhibited in this department must be the handiwork of the exhibitor and have been made within the last year.
4. If a knitted, crocheted, or woven item or a rug is made of animal fiber, please enter it into the "FIBER ARTS" department.
5. **ONE ENTRY PER CLASS IN THIS DEPARTMENT.**
6. Professional Division:
 Won best in show in any judged show
 Teaches classes for monetary gain
 Judges needlework or sewing at fairs or other shows
 Sold needlework or sewing items for monetary gain
 Professional of any type in sewing or needle work business.
 Amateur Division:
 No to all five questions above

Judging Score Card:

Value of article in relation to work done and materials used	25%
Workmanship	25%
Design and Color	20%
General Appearance	15%
Suitability of Material used	15%

REMEMBER: For the latest schedule of events and information please go to the website at fremontcountyfair.org and watch the fair Facebook page for current events.

SEWING: DIVISION 1101-1104

ADULT GARMENTS

	Youth Division 1101	Amateur Division 1102	Pro Division 1103	Senior Division 1104
Apron-Plain & Cute	001	001	001	001
Apron-Fancy & Frilly	002	002	002	002
Blouse or Shirt, Casual	003	003	003	003
Coat	004	004	004	004

Costumes-Halloween	005	005	005	005
Costumes-any other	006	006	006	006
Dress, casual	007	007	007	007
Dress, dress up	008	008	008	008
Jacket	009	009	009	009
Period Outfit-	010	010	010	010
Adult size				
Period Outfit- Child	011	011	011	011
Size				
Sleepwear or Robe	012	012	012	012
Skirt	013	013	013	013
Slacks	014	014	014	014
Suit, men's	015	015	015	015
Suit, women's	016	016	016	016
Swimsuit	017	017	017	017
Vest	018	018	018	018

ADULT MISCELLANEOUS

Down-filled garment	025	025	025	025
Fiber-filled garment	026	026	026	026
Remade garment	027	027	027	027
Sewing with leather	028	028	028	028
Any other garment	029	029	029	029

CHILDREN'S GARMENTS

Boy's Shirt	030	030	030	030
Girl's Shirt	031	031	031	031
Child's Playsuit	032	032	032	032
Child's Pants	033	033	033	033
Dress	034	034	034	034
Nightwear	035	035	035	035
Quilted Child wear	036	036	036	036
Any other garment	037	037	037	037

INFANT'S GARMENT

	Youth Division	Amateur Division	Pro Division	Senior Division
	1101	1102	1103	1104
Baby booties	040	040	040	040
Baby dress	041	041	041	041
Any other item	042	042	042	042

KNITTING: DIVISIONS 1105 - 1108

	Youth Division	Amateur Division	Pro Division	Senior Division
	1105	1106	1107	1108
Afghan	001	001	001	001
Baby item	002	002	002	002
Baby set	003	003	003	003
(sweater, cap, booties)				
Bedsread	004	004	004	004
Doily	005	005	005	005
Hat or cap	006	006	006	006
Jacket or coat	007	007	007	007
Lap robe	008	008	008	008
Mittens or gloves	009	009	009	009
Pillow	010	010	010	010
Potholders, set (2)	011	011	011	011
Scarf	012	012	012	012
Socks or slippers	013	013	013	013
Sweater, child's	014	014	014	014
Sweater, men's	015	015	015	015
Sweater, women's	016	016	016	016
Vest	017	017	017	017
Any other item	018	018	018	018
Machine Knitted	019	019	019	019
(small item)				

CROCHETING: DIVISION 1109 - 1112

	Youth Division	Amateur Division	Pro Division	Senior Division
	1109	1110	1111	1112
Afghan	001	001	001	001
Baby afghan	002	002	002	002
Baby set	003	003	003	003
(sweater, cap, booties)				
Baby item or garment	004	004	004	004
Bedsread	005	005	005	005
Collar	006	006	006	006
Hat or Cap	007	007	007	007
Doily Small 8"-11"	008	008	008	008
Doily Medium 12"-17"	009	009	009	009
Doily Large 18"-24"	010	010	010	010
Centerpiece 24"-30"	011	011	011	011
Dresser scarf	012	012	012	012
Jacket or coat	013	013	013	013
Lap robe	014	014	014	014
Luncheon/Table cloth	015	015	015	015
Mittens or gloves	016	016	016	016
Pillow	017	017	017	017
Pot holder, set (2)	018	018	018	018
Runner	019	019	019	019
Scarf	020	020	020	020
Socks or slippers	021	021	021	021

Sweater, child's	022	022	022	022
Sweater, men's	023	023	023	023
Sweater, women's	024	024	024	024
Toy	025	025	025	025
Vest	026	026	026	026
Any Other item	027	027	027	027

RUG: DIVISION 1113 - 1116

	Youth Division 1113	Amateur Division 1114	Pro Division 1115	Senior Division 1116
Braided Rug	001	001	001	001
Crocheted Rug	002	002	002	002
Hooked Rug	003	003	003	003
Latch Rug	004	004	004	004
Any other	005	005	005	005

LINENS: DIVISION 1117- 1120

	Youth Division 1117	Amateur Division 1118	Pro Division 1119	Senior Division 1120
Bedsread, any type	001	001	001	001
Buffet or vanity set, any type	002	002	002	002
Dinner cloth, decorated any type	003	003	003	003
Hand or bath towel, embroidered	004	004	004	004
Hand or bath towel, any other	005	005	005	005
Handkerchief, decorated; any type	006	006	006	006
Luncheon cloth, decorated any type	007	007	007	007
Napkins (4)	008	008	008	008
Pillowcases, appliqué (one pair)	009	009	009	009
Pillowcases, crocheted or tatted (one pair)	010	010	010	010
Pillowcases, embroidered	011	011	011	011
Pillowcases, any other	012	012	012	012
Placemats (4)	013	013	013	013
Scarves, decorated any type	014	014	014	014
Sheets	015	015	015	015
Tea towels, any embroidery (two or more)	016	016	016	016
Tea towels, any other (two or more)	017	017	017	017
Ribbon embroidery	018	018	018	018
Any Other Item	019	019	019	019

HOLIDAY ITEMS: DIVISIONS 1121- 1124

Must be a needlework item.

	Youth Division 1121	Amateur Division 1122	Pro Division 1123	Senior Division 1124
Christmas Tree Skirt	001	001	001	001
Stocking	002	002	002	002
Wall Hanging Christmas	003	003	003	003
Wall Hanging	004	004	004	004
Holiday Picture	005	005	005	005
Any Other Holiday item	006	006	006	006

HANDICRAFT: DIVISION 1125 - 1128

	Youth Division 1125	Amateur Division 1126	Pro Division 1127	Senior Division 1128
Afghan	001	001	001	001
Bargello, any item	002	002	002	002
Candle wicking	003	003	003	003
Counted cross stitch Less than 8"	004	004	004	004
Counted cross stitch 9"-14"	005	005	005	005
Counted cross stitch	006	006	006	006
Animals	007	007	007	007
Baby or child	008	008	008	008
Blackwork	009	009	009	009
Embroidery, any item				
Floral	010	010	010	010
People	011	011	011	011
Pillow	012	012	012	012
Religious	013	013	013	013
Sampler	014	014	014	014
Season	015	015	015	015
Towel	016	016	016	016
Any other item	017	017	017	017
Machine embroidery, clothing	018	018	018	018
Machine embroidery, towel	019	019	019	019
Machine embroidery, any other item	020	020	020	020
Needlepoint any item	021	021	021	021
Plastic canvas, any item	022	022	022	022
Potholder (set)	023	023	023	023
Silk flowers (handmade)	024	024	024	024
Tatting, any item	025	025	025	025
Weaving, any item	026	026	026	026
Any other handicraft not listed	027	027	027	027

Punch Embroidery	028	028	028	028
Counted cross stitch with hand dyed fabric or fibers	029	029	029	029
Counted cross stitch, any other	030	030	030	030
Crewel embroider, any item	031	031	031	031
Embroidery with ribbon	032	032	032	032
Latch hook, any tem	033	033	033	033
Bluework embroidery	034	034	034	034
Redwork embroidery	035	035	035	035
Brazilian embroidery	036	036	036	036

**MISCELLANEOUS:
DIVISIONS 1129 - 1132**

	Youth Division 1129	Amateur Division 1130	Pro Division 1131	Senior Division 1132
Decorative Doll	001	001	001	001
Doll Clothes	002	002	002	002
Dresser Scarf	003	003	003	003
Dresser Scarf, Applique	004	004	004	004
Dresser Scarf, Embroidery	005	005	005	005
Dresser Scarf, Mixed Media	006	006	006	006
Pillow, any other	007	007	007	007
Purse or Handbag	008	008	008	008
Table Runner	009	009	009	009
Table Runner, Applique	010	010	010	010
Table Runner, Embroidery	011	011	011	011
Table Runner, Mixed Media	012	012	012	012
Table Topper	013	013	013	013
Table Topper, Applique	014	014	014	014
Table Topper, Embroidery	015	015	015	015
Table Topper, Mixed Media	016	016	016	016
Tote Bag	017	017	017	017
Any Other Item	018	018	018	018

**OPEN CLASS QUILTING
DEPARTMENT 12**

DIVISIONS 1201 - 1212 SUPERINTENDENT-

Lauren McKiernan, Riverton

Begin Arrival: 4:30 pm - 7:30 pm, Thurs July 18

Exhibits in Place: 7 pm, Thursday, July 18

Release Exhibits: 2 pm, Sunday, August 4

Judging: 8 am, Monday, July 22

Premium Table #2

Level 2 Quilter - Yes to any of the following:

Won first place in any judged quilt show?

Teaches classes for monetary gain?

Judges quilts at fairs or quilt shows?

Sold a quilt for monetary reward?

Professional of any type in the quilting business?

Level 1 Quilter – No to all four questions above

Rules

- Articles exhibited in this department must have been completed within the last two years and must not have been shown previously at this Fair, in order to compete for premiums.
Exhibitors entering borrowed or purchased article's as their own handiwork must be so identified with the name of the creator and title of the original work being submitted with the article. Failure to comply with this policy will be considered an attempt to defraud and shall be sufficient reason to permanently exclude the guilty party from this exhibition. This policy applies to all exhibitors.
- Items must have been completed from August 2016 to July 2019. (Now a 2 year rule) You may have started your quilt after August of 2016. Only quilts entered in the "My First Quilt" contest are exempt from this rule.
- All items must be prepared for hanging with quilt pockets (may be temporary). Pocket must be at least 5" wide.
Safety pin are acceptable; No Straight pins.
- Articles must be entirely complete.
- All articles must be clean and free of all animal hair or they will not be accepted for judging.
- If a combination of techniques are used, that which requires the larger amount of work, will specify the exhibit category.
- Superintendent reserves the right to change classes on any item if entered into an inappropriate category.
- Specify if article is a group quilt (done in ANY part by more than ONE person) or if the entrant is under 12 years of age.
- All exhibits must be checked in with the Superintendent.
- All exhibits must have some type of quilting; meaning the quilting stitch must go through the Top, Batting, and Backing of the exhibit.
- Quilted clothing should be entered into sewing or wearable art.
- All rules stated above must be followed or may cause disqualification by judge(s).
- Only one entry per class, per exhibitor.

Judging Criteria:

Quality of work

Amount of work in relation to use

Suitability of design, color, and line

Originality of design

Finishing Techniques

General Appearance (neat, clean, free of lint, hair, soil, stains and odors)

CLASS DEFINITIONS:

Hand Quilted - Quilted by Hand (includes tied quilts)

Machine Quilted - Quilted by self on any machine

Commercially Quilted - Paid, traded or bartered with

an individual or business to quilt your entry; this includes the binding of the quilt entry as well.

Kit Quilt – made with pre-printed panels or pre-selected/ packaged fabrics

Group Quilt – 3 or more people have work in the quilt

Senior Quilter – 70 years or older

DIVISION 1201 - LEVEL 1 HAND QUILTED

1202 – LEVEL 1 SELF MACHINE QUILTED

1203 – LEVEL 1 COMMERCIALY QUILTED

1204 - LEVEL 1 COMPUTERIZED

DIVISION 1205 – LEVEL 2 HAND QUILTED

1206 - LEVEL 2 SELF MACHINE QUILTED

1207 - LEVEL 2 COMMERCIALY QUILTED

1208 - LEVEL 2 COMPUTERIZED

LAP/NAP SIZED QUILT

Maxium Size 58" x 83"

	CLASS
Hand Pieced	001
Machine Pieced	002
Hand Appliqué	003
Machine Appliqué	004
Senior Quilter	005
Kit Quilt	006
Tied	007
Group Quilt	008
Embroidered Quilt	009
Any Other Quilt	010

BED SIZED QUILT

Minimum Size 59" x 84"

	CLASS
Hand Pieced	011
Machine Pieced	012
Hand Appliqué	013
Machine Appliqué	014
Senior Quilter	015
Kit Quilt	016
Tied	017
Group Quilt	018
Embroidered Quilt	019
Any Other Quilt	020

BABY QUILT

	CLASS
Hand pieced	021
Machine Pieced	022
Hand Appliqué	023
Machine Appliqué	024
Senior Quilt	025
Kit Quilt	026
Tied	027
Group Quilt	028
Embroidered Quilt	029
Any Other Quilt	030

MINIATURE – UNDER 21"

(A miniature version of a large pattern) (must reflect an overall miniature scale in the pattern and block size)

	CLASS
Hand Pieced	031
Machine Pieced	032
Hand Appliqué	033
Machine Appliqué	034
Senior Quilter	035
Kit Quilt	036
Group Quilt	037
Embroidered Quilt	038
Any Other Quilt	039

WALLHANGINGS

	CLASS
Hand Pieced	041
Machine Pieced	042
Hand Appliqué	043
Machine Appliqué	044
Senior Quilter	045
Kit Quilt	046
Group Quilt	047
Embroidered Quilt	048
Any Other Quilt	049

**SPECIALTY/THEMED QUILTS
DIVISION 1209**

QUILT FROM THE HEART (CHARITY QUILT)

The 2019 chosen charity is "Help for Health Hospice".

Department Entry Information Applies

Special Award: Rosette

Best of Show – selected as Judge's Choice!

Rules

1. Make a practical baby, child or adult size quilt (quilted or tied).
2. When you enter this quilt, you are giving the Fremont County Fair Board permission, at the close of fair, to donate the quilt to a charity in your name. The Charity chosen for 2019 is the "Help for Health Hospice" home.
3. This class is a "feel good" class – its fun to give!
4. No premiums paid in this division/class.
5. Quilts will be judged by the official fair judges and will select Judge's Choice.
6. You may enter more than one quilt in this class.

	CLASS
Quilt From the Heart	001

**FREMONT COUNTY FAIR
THEME QUILT
"8 DAYS OF AWESOME!"
DIVISION 1210
Premium Table #1**

*Qualifies for Theme Sweepstakes
Special Award: Rosette
Best of Show - Judge's Choice

Rules

1. Must be a current quilt.
2. Fair theme must be present in the fabric, piecework, or appliqué or mixed media.
3. May be one technique or a combination of techniques.
4. Must be entered in this class to qualify for theme sweepstakes.
5. Any quilter may enter this contest.

County Fair Theme Quilt

CLASS
001



**Special Awards Donated By:
Juanita Virden in Memory of Barb Hanson**

**Best Quilt Level 1 - \$30
Reserve Best Quilt Level 1 - \$20
Best Wall Hanging Level 1 - \$30
Reserve Best Wall Hanging Level 1 \$20**

**QUILTERS GUILD OR GROUP
SPECIAL PROJECT
DIVISION 1211
Premium Table #2**

Department Entry Information Applies

Rules

1. If your guild or group has a special quilt project for its members together enter this class. If it is not a quilt, please enter the Needlework Department.
2. You must specify your guild or group on the entry form and what the challenge is for building this quilt.
3. Your project will only be judged against your guild or group members, if properly specified on the entry form
4. If only one entry per guild or group is received, it will be reclassified..

Quilter's Group Special Project

CLASS
001

**SPECIAL CONTEST
QUILT BLOCK CONTEST
DIVISION 1212
Premium Table #3**

Sponsored by:
Service Plumbing and Heating Company, Inc., Riverton

Rules

1. The theme for the 2019 Quilt Block contest will be "FAIR TRADITIONS" to feature fair time traditions.
2. This contest is open to any interested quilter from Fremont County.
3. The block will become the property of the Friends of the Fremont County Fair.
When enough blocks are made, the blocks will be made into a special quilt to be displayed and auctioned off at a future Fremont County Fair.
4. Proceeds from the sale of the quilt will go toward the Friends of Fair Educational Scholarship Fund to benefit youth in Fremont County.
5. Quilt Block must be 12 1/2 inches by 12 1/2 inches (including the seam allowance) to be considered for the FFCF quilt and qualify for fair premiums.
6. Enter Dept. 12, Division 1211, Class 001.

Quilt Block - Fair Traditions!

CLASS
001

**SPECIAL CONTESTS
DEPARTMENT 13
DIVISIONS 1301 - 1306**

**SUPERINTENDENT: Listed Under Each Contest
Premiums Listed By Division**

"NEW"

**BORN AGAIN JUNK CONTEST
Dept. 13, Division 1301, Class 001**

SUPERINTENDENT: Michael Gallagher, Riverton

Premiums offered: \$200.00

Begin Arrival 4 pm to 7 pm

Friday, July 26 at AgriCenter

People's Choice Judging closes:

12:00 p.m., Friday, August 2

Rules:

1. Special contest featuring an item made from "junk" into a "curb appeal" item. Classes are what the items related to after upcycling, not what it was before. All items must be 80% or greater recycled material.
2. The entry must be self supported and easily moved.
3. The item may be offered for sale, with a written, set price listed for view or donated to the Friends of Fair for support of their cause.
4. Two entries per exhibitor name (may be a business; group or individual). Premiums paid to top 3 entries.
5. Entry form due: Monday, July 8 by 6:00 p.m.
6. Enter Dept. 13, Division 1301, Class 001 - 005

CLASS "CURB APPEAL" (Yard, Garden, Patio)

001 Seating

002 Table

003 Storage

004 Accent Decor

005 Any Other

"NEW!"

**COWBOY COUNTRY DISTILLERS
"COWABUNGA COCKTAILS"**

Made with Cowboy Country Silver Spur Vodkas'

Department 13 Division 1302

SUPERINTENDENT: Pam Rivers

Awards offered: \$100.00

Begin Arrival 1:00 pm, Saturday, August 3

Judging: 2:00 pm, Saturday, August 3

Fremont Center Kitchen

\$50 gift card(s) to the top Cowabunga Cocktail maker; second place receives \$30 gift card; third place receives \$20.00 card.

Rules:

1. All exhibitors will abide by all applicable policies of the Fremont County Fair.
2. Competition open to any creative "Cowabunga Cocktail" maker in Fremont County. No pre or post judging consumption of alcohol on the fair grounds.
3. Each entry to have a written description, on a 3" x 5" card, describing the "Cowabunga Cocktail" ingredients (actual amounts of each is optional). All entries must be made with Cowboy Country Silver Spur Regular Vodka or Jalapeno Bacon Flavored Vodka.
4. Awards and Premiums: Top 3 "Cowabunga Cocktail" will receive a rosette and a gift card. Best Cowabunga Cocktail in Fremont County receives a special rosette and \$50 in gift cards.

CLASS

**001 Best Cowabunga Cocktail in Fremont County
with recipe card (required)**

FREMONT COUNTY CUPCAKE WARS

DIVISION 1303

SUPERINTENDENT - Pam Rivers

Saturday, August 3

RULES

1. There will be two categories for this event Baking Enthusiast; bakes as a hobby or pastime and Professional Baker; baker that has sold cake decorated products.
2. The Two Judging Categories will be Best Overall Cupcake and Best Decorated Cupcake and Display.
3. Contestants are required to prepare 12 undecorated cupcakes, with recipe and cupcake name and description submitted at time of judging. Cupcakes must be standard size. All decorations on cupcakes must be edible. There is no limitation on the type of decorations; royal icing, fondant, butter cream, candy, cookies etc. (anything edible.)
4. Displays, stands, backdrops, and or props are intended to enhance the presentation of your entry and cannot exceed 3 feet square. Contestants are responsible to supply their own display items. A table will be supplied to place display on. Display theme for 2019 is "8 Days of Awesome!" (80's).
5. Contestants will be given one hour to decorate their cupcakes and assemble the display. Plan to begin decorating at 11 am on Saturday, August 3. Judging will be at 12 noon.
6. Four Cupcakes will be used for judging the remaining cupcakes will be donated to the Friends of the Fremont County Fair and will be sold or auctioned off to raise money for the 2020 Youth Awards Program.

Enter Dept. 13, Division 1303, Class 001 or 002

CLASS

Baking Enthusiast

001

Professional Baker

002

CUPCAKE WAR AWARDS

THEME SWEEPSTAKES "8 DAYS OF AWESOME!"

Rules:

1. This is a theme challenge for all ages.
2. On Entry Form, Specify Theme Contest and enter **Dept. 13, Division 1303, Class 008.**
3. You must enter a minimum of 4 of the 6 classes below.
4. Highest point total from top 4 placing classes will be used.

Kelvin's Kaps 4 Kancer	Div. 1307, Class 001 - 009
Best Hobby Collection	Div. 418-419, Class 002, 004
Floral Theme Contest	Div. 707-708, Class 001/002
Theme Picture (fair event)	Div. 208, Class 003
Fair Theme Quilt	Div. 1207, Class 004
Awesome Sauce Contest	Div. 606, Class 011 - 014

Points

First Place	10 Points	Fourth Place	5 Points
Second Place	8 Points	Fifth Place	4 Points
Third Place	6 Points		

FAIR THEME AWARDS AND DONORS FREMONT COUNTY FAIR BOARD

presents a

**\$60 gift card(s) to the first place exhibitor and
\$40 gift card(s) to the second place exhibitor**

FREMONT COUNTY COUNTRY CHRISTMAS ORNAMENT CONTEST

Dept. 13, Division 1304

Superintendent - Shawna Edgeington

Rules:

1. Make three ornaments around the theme, **"A Country Christmas"**. These ornaments will be donated to the Fremont County Fair and will be used to decorate a tree for "Festival of Trees" supporting Fremont County's Community Entry Services.
2. Ornaments must be hand-made. Commercial made ornaments will not be accepted for judging. One set of three (3) matching ornaments per entry, with a maximum of three (3) entries per person. (9 ornaments)
3. Prizes will be given to the top three ornament sets entered.
4. Bring your ornaments to the Fremont Center on Friday, July 26 from 11 a.m. to 7 p.m.
5. Enter Dept. 13, Division 1304, Class 001

CLASS

001 Fremont County Country Christmas Ornament Contest

2019 COUNTY HOMEMAKERS CLUB SWEEPSTAKES

COORDINATOR: Shirley Woodward, Riverton

Awards: Rosette-First Place Club

Rosettes: Second, Third, and Fourth Place Clubs

Premiums:

First: \$100.00, Second: \$60.00, Third: \$40.00

Rules:

1. Open only to members of Fremont County Homemakers Clubs.
2. Each club member will enter their exhibits in the fair. Exhibits to be judged to receive ribbons and premiums for entered exhibits.
3. As each individual member enters they are to write their name and address on the entry blank, then after the name/address she will write in RED INK, THE NAME OF THE EXHIBITOR'S CLUB. This will be the only way the fair office will know you are entering this special contest.
4. Please verify when you pick up your entry tags from the fair office ask, "Have my exhibits been entered in the Homemakers Club Contest?" That way, if you forgot to mark your entry blank or if the Fair office failed to notice, corrections can be made at this time. This will be your opportunity to enter properly.
5. The clubs earning the most points will receive the awards and premiums as listed above.
6. The following points will be awarded to the clubs: 90% of members exhibit- 10 Points, Best of Show- 6 Points, Champion- 5 Points.
7. Entries in the following Departments will be considered towards club points.

Department 1: Agriculture Products

Department 2: Arts/ Artisans

Department 4: Crafts

Department 6: Culinary

Department 7: Floriculture: Flowers

Department 8: Horticulture: Vegetables

Department 11: Needlework

Department 12: Quilting

REMEMBER: For the latest schedule of events information please go to the website at fremontcountyfair.org and watch the fair's Facebook page for current events.

2019 STICK HORSE CONTEST Dept. 13, Division 1305

Sponsored by the Friends of Fremont County Fair

**Join in the fun and celebrate the fair and the theme,
by making a special Stick Horse!***

Rules:

1. Requirements: All Stick Horses must be homemade, not purchased, with a way to be used by kids. Stick Horses must be filled with child safe stuffing.
2. Bring your Stick Horses to the Fremont Center on Friday, July 26 from 11 pm to 7 pm.
3. Stick Horses will be judged on Wednesday, August 1 by a panel of 3 judges with great awards being awarded to the Top Three (3) Stick Horses! In addition, all fair guests will be allowed to vote in a People's Choice voting that will occur daily, through Friday, August 3 at 1:00pm. Special award recognition to the entrant of the top voted Stick Horse of the fair by fair guests!
4. *All Stick Horses are to be donated to Kidz Zone (youth 8 & under)
5. Enter Department 13, Division 1305, Class 003

CLASS

003 Stick Horse

FACEBOOK or INSTAGRAM SCAVENGER HUNT Dept. 13, Division 1305

Details:

Participants will hunt for items during the 2019 Fremont County Fair, take pictures of items, and post to Facebook or Instagram while including the appropriate mentions (#AwesomeFair10 or #WyoFair10)

Scavenger Hunt Items:

1. Carnival Ride.
2. Animal being groomed.
3. Animal being shown.
4. Food Vendor at their booth.
5. Commercial Vendor at their booth.
6. Free Stage or Roaming Entertainment.
7. Anything Agriculture related.
8. Open Class Entry. (In Fremont Center)
9. 4-H Static Entry. (In Heritage Hall)
10. Fair Food Selfie (Picture eating fair food)

Wild Card Items:

1. Smile Big and say "Cheese" in front of the fair logo, on the front of the Fremont Center for this selfie!
2. Take a picture with one of the following: A Fremont County Commissioner or elected official, Fremont

County Fair Board Member or the Director of the Fremont County Fair.

Rules:

1. The hunt is initiated with the first successful post on the Fremont County Fair's Facebook or Instagram pages.
2. Each participant must capture images of the scavenger hunt items listed and satisfactorily post on Facebook or Instagram to be eligible to win a prize.
3. All pictures must be taken at the 2019 Fremont County Fair. If the judges cannot verify that a photo was taken at the fair this year, it will not be accepted. Duplicate photos do not qualify for additional credit.
4. Satisfactorily Post on Facebook – Each post on Facebook or Instagram must include the photo, a mention of #2019FCF and a mention of #FremontFair. Posts without a photo and both mentions will not qualify.
5. Each participant must post to the Fremont County Fair Facebook or Instagram pages. No combined efforts between two or more accounts will be accepted.
6. A lottery style drawing will determine which qualified participant receives prizes. Entries will not be accepted after 6 p.m. on Monday August 5, 2019.
7. Wild Card objectives increase chances to win!

Winners: Prizes: TBA

- Participants that satisfactorily post all of the scavenger hunt items become eligible for the prize drawing.
- Participants that post the bonus items will have a greater chance of winning the drawing.
- Winners will be announced August 11, 2019 and notified via Facebook messenger.
- Winners must pick up prizes no later than September 15, 2019.

CLASS

005 Scavenger Hunt

2019 FREMONT COUNTY FAIR WEINER DOG DERBY Dept. 13, Division 1306

Who has the fastest Weiner Dog in Fremont County?!
Well, here is your chance to see.

Fill out the "Weiner Dog Derby" entry form and turn it into the Fremont County Fair office by July 23, at 5 p.m.

Event held: Sunday, July 28, 7:30 p.m. Grand Arena

Ribbons will be given for winners in each heat, prizes will be awarded for Grand Champion and Reserve Grand Champion Racing Weiner Dog. Prizes will also be awarded for the Best Dressed Weiner Dog! So dress up those fast dogs and come to the Fremont County Fair Sunday, July 28 2019!

Rules and Regulations:

1. Each dog will run in one preliminary heat. The top 2 winners of each heat will compete in the Championship Race.
 2. The distance for the race will be approximately 40 yards. The distance is approximate and may vary at the discretion of the racing officials.
 3. The number of heats and dogs in each heat will depend on the number of entries, with a maximum of eight dogs per heat.
 4. Two Handlers are required per dog: One handler remains with the dog behind the starting line, the other handler will stand behind the finish line to call the dog and collect him/her after the race. At least one handler must be 18 years of age or older. For the safety of the dogs, handlers are not permitted to leave their designated places while the dogs are competing.
 5. We will not be using a starting gate. Owners will stand at the starting line and hold their dog. Once the dogs are settled behind the starting line, the announcer will state, "Ready, Set, Go" and the handlers will release the dog. Please allow your dog to run freely from the starting line of his/her own accord. Any handler releasing the dog before "go" will be disqualified at the discretion of the racing officials.
 6. Once the dog has been released the finish line handler can attract the dogs' attention to the finish line, snacks, squeaky toys, etc. may be used to coax your dog. No loud noises, other live animals or anything deemed to be disruptive to other dogs will be permitted.
- In order to be declared the winner all 4 paws must cross the finish line.
 - The Championship Heat will consist of the 1st and 2nd place winners of all the previous heats and a possible "wild Card" spots.
 - All dogs must have current shots and provide a copy of shot record as well as a health statement from their veterinarian stating that they meet all health requirements to race.
 - Dogs Must be kept on leashes at all times while on the Fairgrounds property (the only exception being when the dog is racing). Dogs must be removed from the fairgrounds following the race.
 - Please bring a potty pick up method to maintain a clean racing environment.

CLASS

- 001 Weiner Dogs
- 002 Small Dogs
- 003 Best Dressed Weiner Dog

Have you always wanted to attend the Kentucky Derby? Well..... Fremont County has a fun "Derby" for you to attend... IT'S THE WEINER DOG DERBY! Come dressed in your "Derby Finest" and you just might win the "Derby Spectator Award! That's right ladies and gentleman.. get those hats out!

KELVINS KAPS 4 KANCER Dept. 13, Division 1307

*Qualifies for Theme Contest

2019 Caps For Cancer Competition

To Enter: Make a cap that will be used by a patient fighting their battle with cancer! These caps are needed year round and your participation will be for a worthwhile cause. All caps must be new-never worn; free of perfume, pet hair and smoke; soft yarn (fabric for turbans) is best. Do not use wool or alpaca as they can irritate the scalp. Please use patterns that do not have gaps or holes, a tighter stitch is best so that it covers the scalp.

Entries will be taken at the Fremont County Fair Office Friday, July 26 from 11 a.m. to 7 p.m. Each cap must be placed in a clear Ziploc style plastic bag and have name and phone number of exhibitor attached.

All caps will be donated to Tough Enough Cancer Fund, as well as Cancer Centers used by local residents, and will be delivered after the fair. The Caps will be on display in the Fremont Center, Open Class Department, during the 2019 Fremont County Fair.

Department 13 Division 1307

Crochet Class

- 001 Youth
- 002 Adult
- 003 Club Showcase (Must have at least 3 and no more than 10 caps; each cap must be crocheted by a different club member.)

Knitting Class

- 004 Youth
- 005 Adult
- 006 Club Showcase (Must have at least 3 and no more than 10 caps; each cap must be Knitted by a different club member.)

Turban Class

- 007 Youth
- 008 Adult
- 009 Club Showcase (Must have at least 3 and no more than 10 caps; each cap must be sewn by a different club member.)

PREMIUMS: *1st \$15 *2nd \$10 *3rd \$5

****Those individual that would like to donate but would not like to enter them in the contest are asked to bring the "Kaps" to the Fair Office on Friday July 26th from 11 a.m. to 7 p.m.**

WELCOME EXHIBITORS

ANTIQUES AND RELICS DEPT. 13 DIVISION 1308 - 1320

Superintendent- Lori Keith, Lander
Begin Arrival: 11 am, Thursday, July 25
Exhibits in Place: 7 pm, Thursday, July 25
Release Exhibits: 9 am, Sunday, Aug. 4
Judging: 9:00 a.m., Saturday, July 27
Premium Table #3

The Fremont County Fair takes pride in offering this showcase of special items from the days gone by.

Rules:

1. Exhibitors agree to read and abide by the rules and regulations of the Fremont County Fair.
2. Entry deadline is Monday, July 9, 2019, at 6 p.m.
3. Items exhibited in this division should be fifty years old or older to compete for premium recognition.
4. Exhibitors are requested to limit the items entered to five per person/exhibitor.
5. Antique and relics exhibits will be arranged by the Superintendents at their discretion within the allocated display space.
6. Large antique items, i.e. Hoosier Cabinet, are not encouraged, due to space limitations.
7. This showcase competition is for those exhibitors who are interested in preserving items from the past. Selling of items will not be allowed.
8. The following points will be taken into consideration in the judging of the exhibited items: Quality, Provenance, Authenticity, Age (facts as known by the owner and judge), Condition (general condition of item, aesthetics and related parts) and Overall Interest.
9. Exhibitors are encouraged to provide a type written description of the item on a 3"x5" card or paper form.
10. Classes to be determined by the Superintendent based upon entered items.



DIVISION 1308 ELEGANT GLASSWARE OF DEPRESSION ERA

CLASS

- 001 Animal Figure
- 002 Bowl
- 003 Butter Dish
- 004 Candlestick
- 005 Candy Dish
- 006 Compote
- 007 Creamer
- 008 Cup and Saucer
- 009 Dresser Article

CLASS

- 010 Glass
- 011 Perfume Bottle
- 012 Pitcher
- 013 Plate
- 014 Relish Dish
- 015 Salt & Pepper Shaker
- 016 Vase
- 017 Wine Glass
- 018 Any Other Item Not Listed

DIVISION 1309 DEPRESSION GLASS

CLASS

- 001 Advertising
- 002 Bowl
- 003 Butter Dish
- 004 Cake Plate
- 005 Candy Dish
- 006 Cookie Jar
- 007 Creamer
- 008 Cup and Saucer
- 009 Decanter
- 010 Dresser Article
- 011 Goblet
- 012 Juice Glass

CLASS

- 013 Juice Reamer
- 014 Jar/Canister
- 015 Kitchen Ware Item
- 016 Measuring Cup
- 017 Mixing Bowl
- 018 Pitcher
- 019 Plate
- 020 Platter
- 021 Relish Dish
- 022 Salt & Pepper Shaker
- 023 Sugar Bowl
- 024 Sugar Shaker
- 025 Any Other Item Not Listed

DIVISION 1310 GLASS

CLASS

- 001 Advertising
- 002 Bowl
- 003 Butter Dish
- 004 Cake Plate
- 005 Candy Dish
- 006 Cookie Jar
- 007 Creamer
- 008 Cup and Saucer
- 009 Decanter
- 010 Dresser Article
- 011 Goblet
- 012 Juice Glass

CLASS

- 013 Juice Reamer
- 014 Jar/Canister
- 015 Kitchen Ware Item
- 016 Measuring Cup
- 017 Mixing Bowl
- 018 Pitcher
- 019 Plate
- 020 Platter
- 021 Relish Dish
- 022 Salt & Pepper Shaker
- 023 Sugar Bowl
- 024 Sugar Shaker
- 025 Any Other Item Not Listed

DIVISON 1311
CHINA AND PORCELAIN

CLASS	CLASS
001 Advertising	
002 Bone	014 Flow
003 Bowl	015 Salt Cellar
004 Box	016 Mug
005 Butter Dish	017 Occupied Japan
006 Casserole	018 Plate
007 Celery or Relish	019 Platter
008 Compote	020 Server
009 Creamer	021 Salt & Pepper Shaker
010 Cup	022 Shoe
011 Cup and Saucer	023 Snack Set
012 Dresser Item	024 Sugar Bowl
013 Figurine	025 Vase
	026 Any Other Item Not Listed

DIVISON 1312
IRONSTONE, CROCKERY, SEMI-PORCELAIN

CLASS	CLASS
001 Advertising	015 Mug
002 Bone Dish	016 Novelty
003 Bowl	017 Pitcher
004 Butter Dish	018 Plate
005 Chamber Pot	019 Platter
006 Covered Serv Dish	020 Pot, Coffee/Tea
	021 Pottery
007 Cookie Jar	022 Salt & Pepper Shaker
008 Covered Jar	023 Sugar
009 Creamer	024 Shaving Mug
010 Crock	025 Vase
011 Cup and Saucer	026 Wall Pocket
012 Figurine	027 Any Other Item Not Listed
013 Gravey Boat	
014 Jug	

DIVISON 1313
METAL

CLASS	CLASS
001 Advertising	014 Kitchen Tool
002 Aluminum	015 Lantern
003 Bank	016 Pewter
004 Bell	017 Railroad Item
005 Box	018 Sterling
006 Brass	019 Silverplate
007 Candlestick	020 Scissors
008 Copper	021 Tin
009 Cast Iron	022 Tool
010 Cloisonné	023 Trivet
011 Doorstop	024 Spoon
012 Graniteware	025 Any Other Item Not Listed
013 Iron	

DIVISON 1314
PAPER, WOOD, MISCELLANEOUS

CLASS	CLASS
001 Advertising	016 Movie Memorabilia
002 Bakelite	017 Music Box
003 Baseball Card	018 Post Card
004 Bank	019 Photograph
005 Basket	020 Plastic Item
006 Book	021 Report Card
007 Bowl	022 Rolling Pin
008 Butter Mold	023 FC Fair Memorabilia
009 Candlestick	024 Wyoming Memorabilia
010 Celluloid	025 Tintype Picture
011 Greeting Card	026 Fountain Pen
012 Holiday Item	027 Write Instrument
013 Kitchen Tool	028 Occupied Japan
014 Legal Document	029 Any Other Item Not Listed
015 Magazine	

DIVISON 1315
FOR MEN ONLY

CLASS	CLASS
001 Advertising	014 World War I Item
002 Binocular	015 World War II Item
003 Blacksmith Tool	016 Korean War Item
004 Camera	017 Pipe
005 Firearm	018 Razor
006 Fishing Lure	019 Saw
007 Framed Military Collection	020 Shaving Accessory
008 Fishing, Rod & Reel	021 Smoking Accessory
009 Horse Shoe	022 Sport Item
010 Jewelry	023 Spurs
011 Knife, Pocket	024 Sword, Dagger
012 Medal or Award	025 Toy
013 Civil War Item	026 Watch
	027 Any Other Item Not Listed

DIVISON 1316
LARGE ITEMS

CLASS	CLASS
001 Advertising	011 Photograph, Large
002 Chair, Small/Child	012 Picture, Framed Small
003 Churn, Dasher	013 Picture, Framed Large
004 Churn, Mechanical	014 Portrait, Small-Hand Painted
005 Clock, Mantle	015 Portrait, Large-Hand Painted
006 Clock, Other	016 Radio
007 Lamp, Electric	017 Table, Saw

CLASS

008 Lamp, Kerosene
 009 Mechanical Device
 010 Musical Instrument

CLASS

018 Telephone
 019 Wash Board
 020 Wash Bowl, Pitcher
 021 Any other item not listed

DIVISON 1317
CLOTHING TEXTILE

Must be 50 Years Old (Minimum)

CLASS

001 Baby Blanket
 002 Bedspread

 003 Bonnet, Child's

 004 Bonnet, Ladies
 005 Clothing, Child
 -Girls
 006 Clothing, Child
 -Boys
 007 Clothing, Infant
 008 Clothing, Ladies Dress
 009 Clothing, Ladies, Coat
 010 Clothing, Military Uniform
 011 Clothing, Men's
 012 Coverlet
 013 Crochet, Afghan
 014 Crochet, Bedspread
 015 Crochet, Doily
 016 Crochet, Tablecloth

CLASS

017 Cross Stitch
 018 Embroidery,
 Pillowcase
 019 Embroidery,
 Tablecloth
 020 Flag
 021 Gloves

 022 Handbag

 023 Handkerchief
 024 Hat, Men's
 025 Hat, Ladies
 026 Knitted Cap
 027 Knitted, Doily
 028 Knitted, Shawl
 029 Needlepoint
 030 Shoes, Ladies
 031 Tablecloth
 032 Quilt
 033 Any other item
 not listed

DIVISON 1318
JEWELRY

CLASS

001 Bracelet
 002 Brooch, Cameo
 003 Brooch, Other
 004 Compact
 005 Earrings
 006 Evening Bag
 007 Eye Glasses
 008 Hair Accessory Item
 009 Hat Pin
 010 Necklace, Metal

CLASS

011 Necklace, Pearl
 012 Necklace, Other
 013 Thimble
 014 Ring, Gemstone
 015 Ring, Metal
 016 Ring, Rhinestone
 017 Watch
 018 Bakelite, Bracelet
 019 Bakelite, Pin
 020 Plastic
 021 Any other
 jewelry item not listed

DIVISON 1319
BUTTONS, COUNTED ON CARDS

5-10 Buttons per card except 001

CLASS

001 Artistic Design
 002 Brass
 003 Brass, Military
 004 Bakelite

 005 Bone
 006 Celluloid
 007 Glass
 008 Metal
 009 Metal, Enameled

CLASS

010 Picture, Animal
 011 Picture, People
 012 Picture, Other
 013 Picture, Framed
 Large
 014 Plastic
 015 Pressed Glass
 016 Rubber
 017 Shell, Carved
 018 Wood
 019 Any other button
 item not listed

DIVISON 1320
TOYS

CLASS

001 Boy Toy
 002 Car
 003 Doll
 004 Girl Toy
 005 Iron Toy
 006 Lincoln Logs,
 Original Box

CLASS

007 Mechanical Toy
 008 Game in Original Box
 009 Toy Rifle/Pistol
 010 Tractor
 011 Truck
 012 Wooden Blocks
 013 Wooden Pull Toys
 014 Any other toy item
 not listed

2019 FAIRPLEX FACILITY NAMES

NEW NAME**WAS**

FREMONT CENTER

OLD ARMORY

HERITAGE HALL

MAIN HALL

LITTLE WIND CENTER

4-H LUNCHROOM

AGRI CENTER

AG BUILDING

FUR AND FEATHERS PAVILION

OLD BEEF BARN

COTTONWOOD ARENA

LUNCHROOM LAWN

2019 Department Superintendents

Department 1.....	Pam Rivers, Riverton	307-856-9704
	Arlie Colva, Riverton	307-856-2407
Department 2.....	Linda Richendiffer, Riverton	307-856-1532
Department 3.....	Carrie Jo Calvert, Lander	307-840-0123
	Rebecca Weber, Shoshoni	307-856-2494
Department 4.....	Mary Ellen Roylance, Riverton	307-851-0969
Department 5.....	Leanne Linnell, Riverton	307-856-0141
Department 6.....	Pam Rivers, Riverton	307-856-9704
Department 7.....	Riverton Garden Club/Joanne Jeffries	307-856-1849
Department 8.....	Riverton Garden Club/Joanne Jeffries	307-856-1849
Department 9.....	Livestock Superintendents as listed below in Dept. 16	
Department 10.....	TBD	
Department 11.....	Barb David, Riverton	307-851-5486
Department 12.....	Lauren McKiernan, Riverton	307-856-9391
Department 13.....	Shawna Edgeington	307-856-6611
Department 14.....	Lindsey Thornock, Riverton	307-709-7117
Department 15.....	Connie Murray, Lander	307-349-4295
Department 16.....	Matt Root, Riverton, Beef	307-840-2970
	TBD, Dairy Goats	
	Sarah Schlosser, Lander, Dairy Cattle	307-247-3293
	Jessica Murray, Lander, Goats	307-349-6508
	Nick Comes, Lander, Horses	307-349-6450
	Jeanne Carper, Riverton, Poultry	307-857-1555
	Dylan Hedges, Lander, Rabbits	307-349-6290
	TBD, Sheep	
	Wendell VonKrosigk, Shoshoni, Swine	307-856-6331
Department 17.....	Mike McConnell, Lander	307-332-5969
	Taylor Haley, Riverton	307-760-7488
	Damein Christensen, Shoshoni	307-351-0517
	Vay Jensen, Wind River	307-709-7463
Department 18.....	Michelle Weiss, Riverton	307-850-3007
Campground.....	TBD	
Parade.....	Riverton Junior Chamber, Rachel Phillips, Riverton	307-875-7941



106th Fremont County Fair Parade

Parade Theme:
"8 DAYS OF AWESOME!"

6:00 p.m., Saturday, July 27, Main Street, Riverton WY
Parade Entry Deadline Monday, July 22, 2019

PRIZES OFFERED IN THE FOLLOWING CATEGORIES:

Political entries are welcome, but will not be judged for prizes.

Agricultural	Auto	Commercial	Equine	Miscellaneous
Musical	Native American	Religious	Service Club	Youth Category

106th FREMONT COUNTY FAIR Parade Entry Form

Mail this form To:
Fremont County Fair
1010 Fairgrounds Drive, Riverton WY 82501
307-856-6611

Name/Organization _____

Contact Person _____

Mailing Address _____

City, State, Zip _____

Phone _____ E-Mail _____

Division Entering (listed above) _____

Information about you and/or your entry for Parade Announcer _____

DELIVER ENTRY TO:
Fremont County Fair
1010 Fairgrounds Dr.
Riverton, WY 82501
Phone: 307-856-6611

2019 FREMONT COUNTY FAIR OPEN AGRICULTURAL PRODUCTS DEPARTMENT 1

Exhibitor I. D. #

Entry Form For:

Agricultural Products

Beer/Wine

Bees & Honey

Entries Due July 8, 2019. Please read carefully the Policies and Procedures governing each Department **BEFORE** filling out the entry form for the Department.

One Entry Form for Each Exhibitor EXHIBITOR INFORMATION

Name: _____

Mailing Address: _____

City/State/Zip: _____

Telephone: _____ Cell Phone: _____

E-Mail: _____

Please accept the entries described below, subject to the policies and regulations as published in the 2019 Competition Guide for the Fremont County Fair. I agree to abide by all rules, and I declare all statements made in connection with these entries to be correct to the best of my knowledge. Under penalties of perjury, I certify that I will provide my correct taxpayer identification number / social security number, if requested by the Fremont County Fair.

Signature _____ Date _____

Item	Class Code			Class Description (Use exact wording from Competition Guide)	Computer Item # (Office Use Only)
	Dept.	Division	Class		
1					
2					
3					
4					
5					
6					
7					
8					
9					
10					

OPEN AGRICULTURAL PRODUCTS FORM (CONTINUED)

Item	Class Code Example: 1 – 101 – 014			Class Description (Use exact wording from Competition Guide)	Computer Item # (Office Use Only)
	Dept	Division	Class		
11					
12					
13					
14					
15					
16					
17					
18					
19					
20					
21					
22					
23					
24					
25					
26					
27					
28					
29					
30					
31					
32					
33					
33					
34					
35					

DELIVER ENTRY TO:
Fremont County Fair
1010 Fairgrounds Dr.
Riverton, WY 82501
Phone: 307-856-6611

2019 FREMONT COUNTY FAIR OPEN ARTS / CRAFTED ARTS ENTRY FORM – DEPT. 2 & 4

Exhibitor I. D. #

Department 2

Fine Arts (Drawing, Painting, Sculpture)

Native American Artisans Lapidary
Fiber Arts Visual Arts
Geology Silversmithing
Pottery Photography
Cattlemen's Photo Contest
Fiber Arts Photo Contest
Theme Picture Contest

Department 4

Crafted Art
Cowboy Crafts
Jewelry
Hobby Collection
Leathercraft
Taxidermy
Woodcraft

Use a separate entry form for each Exhibitor

Entries Due July 8, 2019. Please read carefully the Policies and Procedures governing each Department **BEFORE** filling out the entry form for the Department.

EXHIBITOR INFORMATION

Name _____ Date of Birth _____
(Required if Youth or Senior Citizen)

Mailing Address _____

City/State/Zip _____

Telephone _____ Cell _____

E-Mail _____

Please accept the entries described below, subject to the policies and regulations as published in the 2019 Competition Guide for the Fremont County Fair. I agree to abide by all rules, and I declare all statements made in connection with these entries to be correct to the best of my knowledge. Under penalties of perjury, I certify that I will provide my correct taxpayer identification number / social security number, **if requested** by the Fremont County Fair.

Signature _____ Date _____

Item	Class Code			Class Description (Use exact wording from Competition Guide)	Computer Item # (Office Use Only)
	Dept.	Division	Class		
1					
2					
3					
4					

**OPEN ARTS / CRAFTED ARTS ENTRY FORM
(CONTINUED)**

Item	Class Code Example: 2 – 205 – 016			Class Description (Use exact wording from Competition Guide)	Computer Item # (Office Use Only)
	Dept.	Division	Class		
5					
6					
7					
8					
9					
10					
11					
12					
13					
14					
15					
16					
17					
18					
19					
20					
21					
22					
23					
24					
25					
26					
27					
28					
29					
30					

DELIVER ENTRY TO:
Fremont County Fair
1010 Fairgrounds Dr.
Riverton, WY 82501
Phone: 307-856-6611

FREMONT COUNTY FAIR 2019: OPEN CAT / DOG/ POCKET PET DEPARTMENT 3

Exhibitor I. D. #

ENTRY FORM

Entries Due July 8, 2019. Please read carefully the Policies and Procedures governing each Department **BEFORE** filling out the entry form for the Department.

Use a **separate** entry form for each Exhibitor.

CAT (Division 301)

DOG (Division 302-304)

POCKET PET (Division 305)

EXHIBITOR INFORMATION

Name _____ Date of Birth _____
(Required if Youth or Senior Citizen)

Mailing Address _____

City/State/Zip _____

Telephone _____ Cell _____

E-Mail _____

Please accept the entries described below, subject to the policies and regulations as published in the 2019 Competition Guide for the Fremont County Fair. I agree to abide by all rules, and I declare all statements made in connection with these entries to be correct to the best of my knowledge. Under penalties of perjury, I certify that I will provide my correct taxpayer identification number / social security number, if requested by the Fremont County Fair.

Signature _____ Date _____

Item	Class Code			Class Description (Use exact wording from Competition Guide)	Cat; Dog or Pkt Pet	Computer Item # (Office Use Only)
	Example: 3	303	001			
	Dept	Division	Class			
1						
2						
3						
4						
5						
6						
7						

**2019 OPEN CAT / DOG/ POCKET PET ENTRY FORM
(CONTINUED)**

Item	Class Code			Class Description (Use exact wording from Competition Guide)	Cat; Dog or Pkt Pet	Computer Item # (Office Use Only)
	Example: 3 – 303 – 001 Dept	Division	Class			
8						
9						
10						
11						
12						
13						
14						
15						
16						
17						
18						
19						
20						
21						
22						
23						
24						
25						
26						
27						
28						
29						
30						

DELIVER ENTRY TO:
Fremont County Fair
1010 Fairgrounds Dr.
Riverton, WY 82501
Phone: 307-856-6611

2019 FREMONT COUNTY FAIR OPEN CLASS EXHIBITS ENTRY FORM

Exhibitor I. D. #

Culinary: Dept. 6

Floriculture: Dept. 7

Horticulture: Dept. 8

Natural Fibers/Wool: Dept. 10

Entries Due July 8, 2019. Please read carefully the Policies and Procedures governing each Department **BEFORE** filling out the entry form for the Department.

One Entry Form for Each Exhibitor EXHIBITOR INFORMATION

Name: _____ Date of Birth: _____
(Required if Youth or Senior Citizen)

Mailing Address: _____

City/State/Zip: _____

Telephone: _____ Cell Phone: _____

E-Mail: _____

Please accept the entries described below, subject to the policies and regulations as published in the 2019 Competition Guide for the Fremont County Fair. I agree to abide by all rules, and I declare all statements made in connection with these entries to be correct to the best of my knowledge. Under penalties of perjury, I certify that I will provide my correct taxpayer identification number / social security number, if requested by the Fremont County Fair.

Signature _____ Date _____

Item	Class Code			Class Description (Use exact wording from Competition Guide)	Computer Item # (Office Use Only)
	Dept	Division	Class		
1					
2					
3					
4					
5					
6					
7					
8					
9					
10					

**2019 OPEN EXHIBITS ENTRY FORM: Departments 6, 7, 8, & 10
(CONTINUED)**

Item	Class Code Example: 7 – 701 – 009			Class Description (Use exact wording from Competition Guide)	Computer Item # (Office Use Only)
	Dept	Division	Class		
11					
12					
13					
14					
15					
16					
17					
18					
19					
20					
21					
22					
23					
24					
25					
26					
27					
28					
29					
30					
31					
32					
33					
33					
34					
35					

106th FREMONT COUNTY FAIR

www.fremontcountyfair.org

2019 HAY SHOW

This form may be duplicated

DEPARTMENT 5

DIVISION 506

HAY SHOW ENTRY FORMS DUE BY 12:00 NOON, Thursday, July 18, 2019

Completed entry form and fees must accompany each hay entry.

Hay exhibit must be delivered no later than 12:00 NOON, Thursday, July 18 to the AgriCenter.

Exhibitor Name (Print) _____

Address _____

City _____ State _____ Zip _____

Telephone _____ Cell _____ Email _____

Please accept the entries described below, subject to the policies and regulations as published in the 2019 Competitive Guide for the Fremont County Fair. I agree to abide by all rules, and I declare all statements made in connection with these entries to be correct to the best of my knowledge. Under penalties of perjury, I certify that I will provide my correct taxpayer identification number / social security number, if requested by the Fremont County Fair.

Please note the entry fee for Wyoming State Fair Hay Show below.

Signature _____ Date _____

CLASS (Circle appropriate class based on anticipated forage analysis)

	Div	Class	Div	Class
Alfalfa Hay (Baled)	501	001 RFV up to 150	501	002 RFV 151 to 200
	501	003 RFV 201 to 250	501	004 RFV 251 and above
Mixed Hay (25-75% legume)	501	006 RFV up to 140	501	007 RFV 141 to 180
	501	008 RFV 181 and above		
Grass Hay (Baled)	501	010 RFV up to 115	501	011 RFV 116 and above
Hay Cubes	501	013 Cubed Hay		
Certified Organic Hay	501	014 Baled or Cubed		

Please include the following information for each entry:

- A. Harvest Lot (1st, 2nd, 3rd cutting) _____
- B. Acres in Harvest Lot _____
- C. Estimated Tons of Hay from Harvest Lot _____
- D. Year Produced _____
- E. Estimated Total Season Production by Exhibitor _____

FOR OFFICE USE ONLY:

WSF HAY SHOW ENTRY FEE:

Entry Number:	Entry Fee: \$5.00 per entry
Class Placing(s):	\$5.00 X _____ Entries = \$ _____
Other Award(s):	(Make Checks Payable to: Wyoming State Fair)

**ENTRY DEADLINE
JULY 9, 2018**

**2018 OPEN CLASS LIVESTOCK
ENTRY FORM – DEPARTMENT 9**

Exhibitor I. D. #

Deliver to: **FREMONT COUNTY FAIR**, 1010 Fairgrounds Drive, Riverton, WY 82501

USE SEPARATE ENTRY FORM FOR EACH OWNER/EXHIBITOR.

**Breeder Pen of 3
Fremont Cattle Producers Contest**

EXHIBITOR INFORMATION

Exhibitor Name _____

Mailing Address _____

City/State/Zip _____

Phone _____

Cell _____

E-Mail _____

Under penalties of perjury, I certify that I will provide my correct taxpayer identification number / social security number, if requested by the Fremont County Fair.

I/we hereby certify that the animals listed on this form are entered for exhibition in accordance with the policies and procedures of the Fremont County Fair as contained in the Fremont County Fair Competition Guide. I/we agree to abide by all general and departmental policies and procedures of the Fremont County Fair.

Exhibitor _____ Date _____

Contest	DIV.	Quantity	Total
Breeder Pen of 3	903		
Fremont Cattle Producers Contest	960		

Item	Class Code Example: 9 – 903 – 001 Dept. Division Class			Sex M/F	Birth Date (mm/dd/yy)	Class Description from Competition Guide	Animal ID / WSF Tag # (Required)	Computer Item # (Office Use Only)
1								
2								
3								
4								
5								
6								
7								
8								
9								
10								
11								

DELIVER ENTRY TO:
Fremont County Fair
1010 Fairgrounds Dr.
Riverton, WY 82501
Phone: 307-856-6611

2019 FREMONT COUNTY FAIR NEEDLEWORK / QUILTING ENTRY FORM: DEPT. 11 - 12

Exhibitor I. D. #

Department 11

Needlework

Department 12

Quilting

Entries Due July 8, 2019. Please read carefully the Policies and Procedures governing each Department **BEFORE** filling out the entry form for the Department.

EXHIBITOR INFORMATION

Name _____ Date of Birth _____
(Required if Youth or Senior Citizen)

Mailing Address _____

City/State/Zip _____

Telephone _____ Cell _____

E-Mail _____

Please accept the entries described below, subject to the policies and regulations as published in the 2019 Competitive Guide for the Fremont County Fair. I agree to abide by all rules, and I declare all statements made in connection with these entries to be correct to the best of my knowledge. Under penalties of perjury, I certify that I will provide my correct taxpayer identification number / social security number, if requested by the Fremont County Fair.

*** Guild name & Description of challenge (If entering Div. 1210 Class 001)**

Signature _____ Date _____

****FIRST TIME FAIR ENTRANT **** Yes ____ No ____ Must complete this information to be eligible for 1st time quilter competition

I agree to donate my "Quilt from the Heart" (Class 001) to the Fremont County Fair for the "Help for Health Hospice Home".

Signature(required) _____

Item	Class Code Example: 11 – 1101 – 005			Class Description (Use exact wording from Competition Guide)	Computer Item # (Office Use Only)
	Dept.	Division	Class		
1					
2					
3					
4					

Needlework & Quilting Entry Form
Departments 11 & 12

Item	Class Code			Class Description (Use exact wording from Competition Guide)	Computer Item # (Office Use Only)
	Dept.	Division	Class		
5					
6					
7					
8					
9					
10					
11					
12					
13					
14					
15					
16					
17					
18					
19					
20					
21					
22					
23					
24					
25					
26					
27					
28					
29					
30					

DELIVER ENTRY TO:
Fremont County Fair
1010 Fairgrounds Dr.
Riverton, WY 82501
Phone: 307-856-6611

FREMONT COUNTY FAIR 2019 SPECIAL CONTESTS ENTRY FORM DEPT. 13 - 14

Exhibitor I. D. #

Department 13

Antiques and Relics
Special Contests

Department 14

Kidz Zone

Pee Wee

Showmanship (Note: Age as of Jan. 1, 2019)

ONE FORM PER EXHIBITOR

Entries Due July 8, 2019 Please read carefully the Policies and Procedures governing each Department **BEFORE** filling out the entry form for the Department.

Item	Class Code			Class Description (Use exact wording from Competition Guide)	Computer Item # (Office Use Only)
	Example: 13	Example: 1303	Example: 005		
	Dept.	Division	Class		
1					
2					
3					
4					
5					
6					
7					
8					
9					
10					

EXHIBITOR INFORMATION

Name _____ Age (as of 1/1/19) _____

Mailing Address _____ City/State/Zip _____

Telephone _____ Cell _____

E-Mail _____

Please accept the entries described above, subject to the policies and regulations as published in the 2019 Competition Guide for the Fremont County Fair. I agree to abide by all rules, and I declare all statements made in connection with these entries to be correct to the best of my knowledge. Under penalties of perjury, I certify that I will provide my correct taxpayer identification number / social security number, if requested by the Fremont County Fair.

Signature _____ Date _____

SPECIAL THANK YOU 2019 AWARD DONORS

(As of May 1, 2019)

GRAND CHAMPION GOLD STAR DONORS (DONATIONS ABOVE \$1000)

Kenneth Crichton (In Memory of Dajuana Crichton)

PURPLE STAR DONORS (DONATIONS UP TO \$1000)

Colva Honeyworks/Arlie Colva

BLUE STAR DONORS (DONATIONS UP TO \$500)

**Non-Typical Services & Logistics LLC/Shawn & Mistalyn Steffen
Justin & Traci Helton
Fremont Fiber Arts Guild**

RED STAR DONORS (DONATIONS UP TO \$250)

**Scott Harnesberger & Teddi Winge
Davis Funeral Home
Lander Dental Group
Dick & Jody McConnaughey
Joan Eisemann
Tonya Santee
Tri Valley 4-H
Amy Stockton/The Stock Doc
Charles & Larissa Plymale Family
Larry Allen
Summit Marble & Granite/Kurtis & Maggie McStay**

GREEN STAR DONORS (DONATIONS UP TO \$100)

**Bruce Berg
Dubois Vision Center/Brian Ballard
Chris Jeffres
Steve & Sue Smerud
The Wrangler/Jim & Paulette Moss
Doug & Cindy Thompson**

**Alice Marlatt
Gary & Bonnie Hall
Patti Griffith/Griffith Dorsets
Claudine Gardner/Gardner Ranch
Kenneth Dickinson
Nita Virden (In Memory of Barb Hanson)
Wanda Miller
Arapahoe 8 ½
The Good Place/Marla Lemm
Barney Cosner
Riverton Artist Guild
Rob & Gloria Philp**

LEGEND



FAIR OFFICE

EXHIBIT ROW

- 2 FREMONT CENTER
- 3 HERITAGE HALL
- 4 LITTLE WIND CENTER
- 5 AGRI CENTER
- 6 FUR & FEATHERS PAVILION
- 7 GOAT CENTER
- 8 SHEEP BARN
- 9 SWINE PAVILION
- 10 BEEF CENTER

EVENTS FACILITIES

- 11 EVENT TICKETS
- 12 EVENT TENT
- 13 SHOW LAWN AREA
- 14 SHOW SEATING
- 15 GRANDSTAND SEATING
- 16 GRAND ARENA
- 17 SHOW PAVILION
- 18 SUNSET ARENA
- 19 MASTER GARDENER GREENHOUSE
- 20 COTTONWOOD LAWN

EXHIBITOR FACILITIES

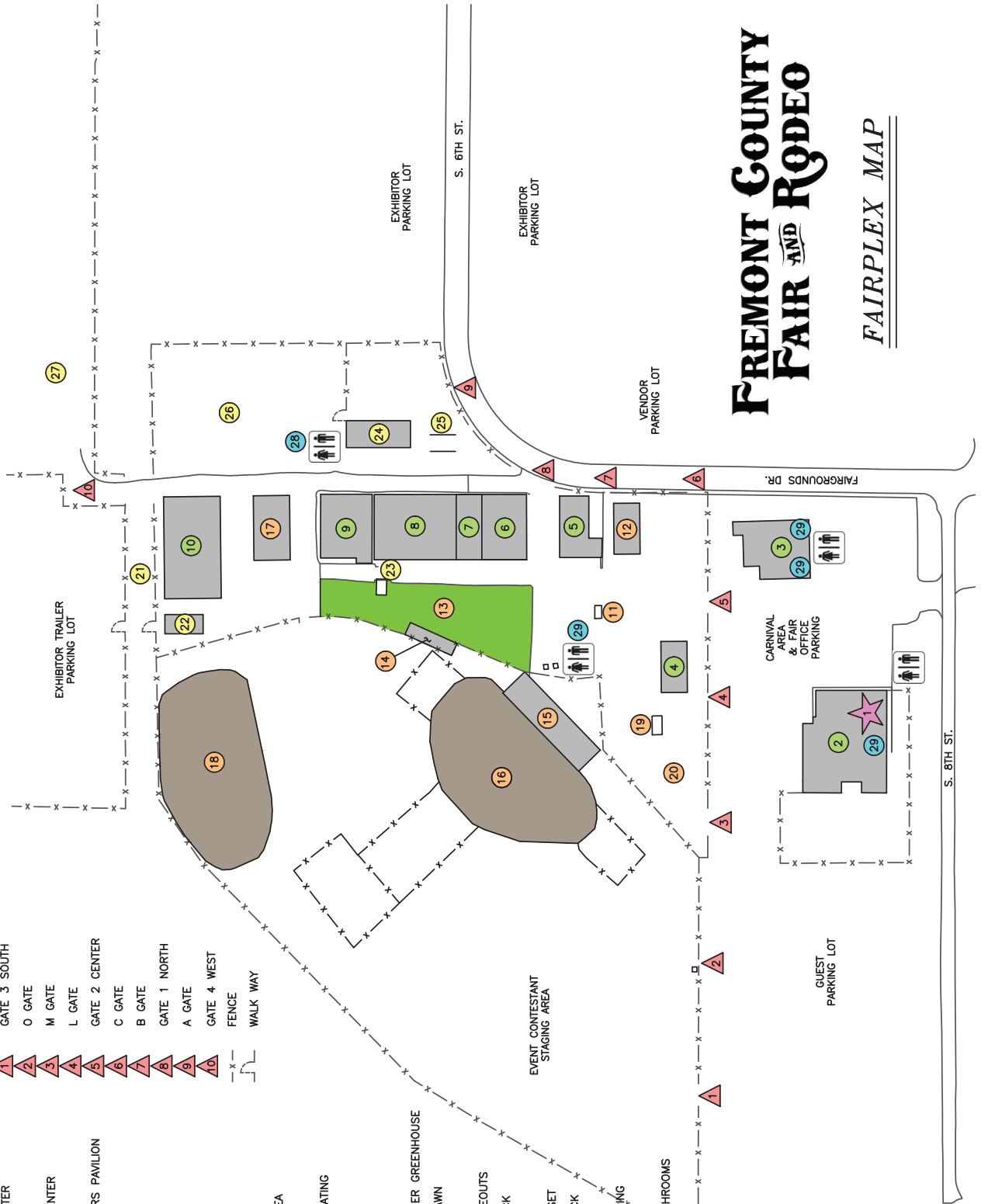
- 21 BEEF CATTLE TIEOUTS
- 22 BEEF WASH RACK
- 23 SCALE HOUSE
- 24 STORAGE QUONSET
- 25 LAMB WASH RACK
- 26 CAMPGROUND
- 27 EXHIBITOR CAMPING

BATHROOMS

- 28 BATHHOUSE/BATHROOMS
- 29 BATHROOMS

GATES

- 1 GATE 3 SOUTH
- 2 O GATE
- 3 M GATE
- 4 L GATE
- 5 GATE 2 CENTER
- 6 C GATE
- 7 B GATE
- 8 GATE 1 NORTH
- 9 A GATE
- 10 GATE 4 WEST
- 11 FENCE
- 12 WALK WAY



FREMONT COUNTY FAIR AND RODEO

FAIRPLEX MAP