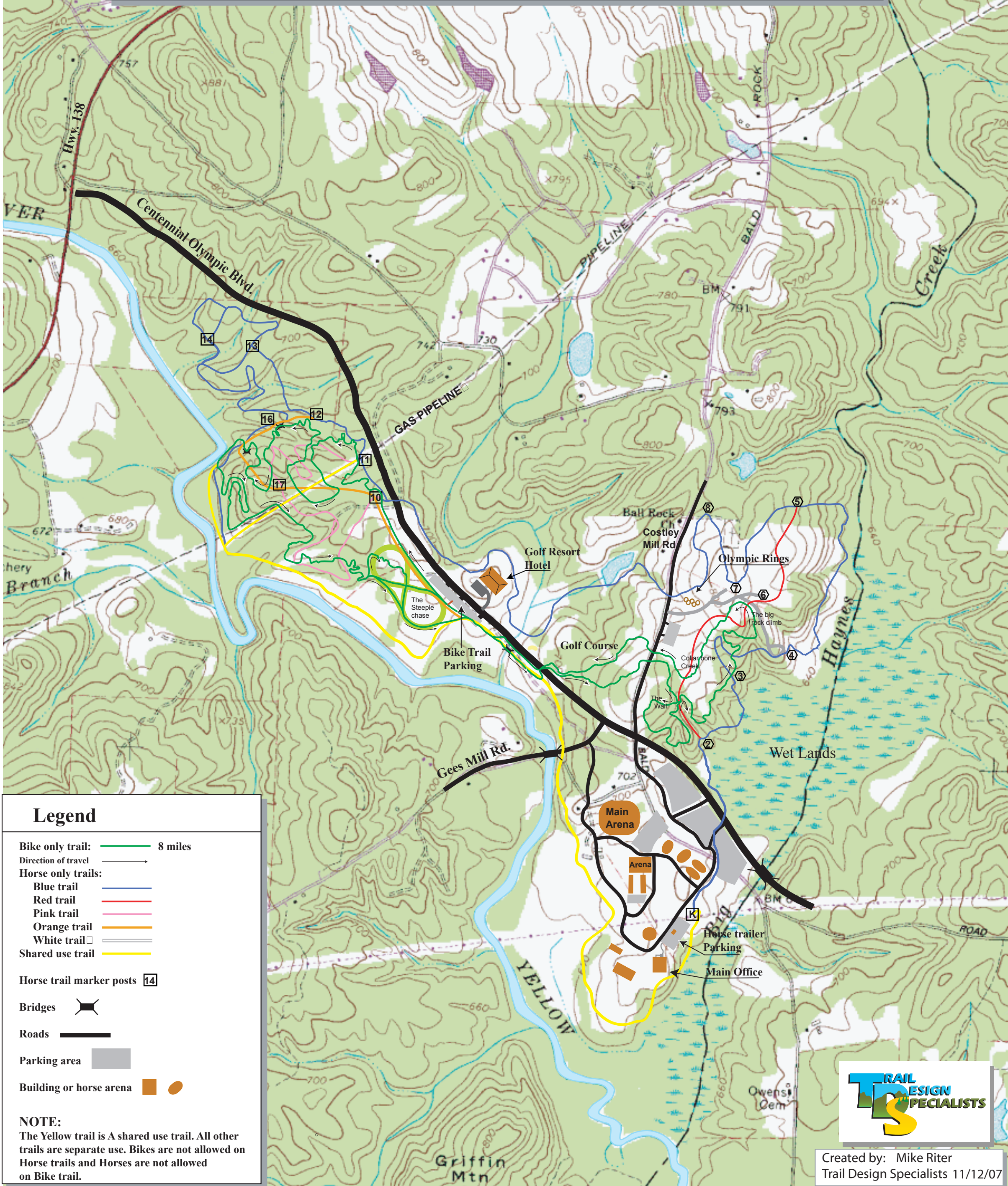


# Georgia International Horse Park and Olympic Mountain Bike Trail Map



## Legend

Bike only trail: 8 miles

Direction of travel:

Horse only trails:

Blue trail

Red trail

Pink trail

Orange trail

White trail

Shared use trail

Horse trail marker posts

Bridges

Roads

Parking area

Building or horse arena

### NOTE:

The Yellow trail is A shared use trail. All other trails are separate use. Bikes are not allowed on Horse trails and Horses are not allowed on Bike trail.



Created by: Mike Riter  
Trail Design Specialists 11/12/07