



SEPT. 6-15
HUTCHINSON, KS

2019 VISITOR GUIDE

CELEBRATING
◆◆◆ **ALL THINGS** ◆◆◆
KANSAS



**GROUND
MAP**



**FAIR
SCHEDULE**



**FEATURED
EVENTS**



GUIDE SPONSORED BY:



A MESSAGE FROM THE GOVERNOR



Welcome to the Kansas State Fair!

This outstanding event has a rich and colorful history, tracing its roots to the 1870s when a group of businessmen organized a local fair in a small wooden livery stable behind Hutchinson's only bank.

Even though the second year of the local fair was scuttled by an epic invasion of grasshoppers, the townsfolk weren't deterred. They pushed on, as Kansans do, and organized the First Annual Reno County Fair.

Some 40 years later, the local event blossomed into what's now known as the Kansas State Fair. In the many decades since, the State Fair has created lasting memories for generations of Kansans and others who've headed here to take in a wonderful variety of events.

Agriculture is the lifeblood of our state, and central to our identity as Kansans. Much of what you'll see at the Fair is a reflection of the captivating beauty of our rural landscape and small towns.

Please stop by our booth at the Fair, which will feature highlights of rural Kansas and our new Office of Rural Prosperity, charged with creating a quality of life in rural Kansas communities that is second to none.

Of course, our State Fair always draws folks from towns of all sizes — rural, urban and suburban.

It's easy to see why. The State Fair offers fun and interesting activities designed to help people of all ages better understand the heritage of rural communities and the state as a whole.

In an era of so much competition for time, the Kansas State Fair remains an outstanding attraction, and for good reason. Regardless of the year or even decade, it's difficult to pass up the State Fair's bounty of interesting exhibits, outstanding entertainment and delectable treats.

Thank you to the many organizers and patrons who make this event possible every year.

Enjoy the Kansas State Fair!

LAURA KELLY
Governor of Kansas

A MESSAGE FROM THE GM

Since its establishment in 1913, the Fair has served as a celebration of all things Kansas. Bringing people to Hutchinson from across the state, the Fair is a unique way to experience everything Kansas has to offer, all in one place.

There are several changes this year that will improve the visitor experience. First, a new Kansas State Fair app will help you navigate the Fairgrounds, find that new fair food and discover shows and events — such as activity in the birthing center. Trams-R-Us will provide

professional tram service to make accessing the Fairgrounds easier. Meanwhile, the equine facilities (Expo and Expo II) will have a new line of events that will be much more spectator friendly. And, finally, our Nex-Tech Wireless Grandstand entertainment is exceptional.

In addition to a great lineup in the Grandstand, we have moved the Tuesday and Thursday grandstand performances to Bretz and Young Injury Lawyers Arena. This free concert series offers the chance to see — at the Kansas State

Fair — rising stars you are sure to hear more from in the future. You will have seen them first at the Kansas State Fair.

There are plenty of traditions that await you. Catch a show in the livestock barns, listen to a Kansas entertainer on our free stages, enjoy the 4-H activities and watch marching band competitions. Or, scope out vendor booths and devour your favorite Fair food.

ABOUT JENNISON

Robin Jennison, a native of Lane County, Kansas, took the helm of the Kansas State Fair in late September 2018. Jennison is a former state lawmaker and Speaker of the Kansas House. He previously served as the Kansas Secretary of Wildlife, Parks and Tourism. This will be his first official Kansas State Fair as general manager.



TABLE OF CONTENTS

LIVESTOCK

Grand Drive	8
Equine Experiences	9

ATTRACTIONS

Contests	10
Explore KS Festival	22
Popular	24
Animals & Education	26

SCHEDULES

Daily Themes	12
Nex-Tech Wireless Grandstand	16
Free Concert Series	17
Midway / Rides	18
Kansas Talent	28

MAP & SPONSORS

Fairgrounds Map	14
Fair Sponsors	20

NEW IN 2019

KSF App	4
Taste of the Fair	5
Listen Up!	6

The Kansas State Fair is a destination where family and friends can come together to make lasting memories. We are excited about the 2019 Fair, and our Fair board, staff and volunteers hope you have a great time. We are here to assist you in any way we can.

ROBIN JENNISON
General Manager, Kansas State Fair

Credit Union Membership. It just makes cents.

We are a full-service financial institution offering a wide range of banking services including:

- Consumer and Mortgage Loans • Savings, Checking, Certificates of Deposits, and IRA Accounts
- FREE Online and Mobile Banking • FREE Bill Pay Service
- FREE Debit Cards • FREE ATMs • FREE E-Statements

GREAT PLAINS FEDERAL CREDIT UNION

Abilene

504 N Buckeye
Abilene, KS 67410
Phone: (785) 263-2309

Columbus

510 North East Ave
Columbus, KS 66725
Phone: (620) 429-4688

Hillsboro

110 West D Street
Hillsboro, KS 67063
Phone: (620) 947-3933

Independence

123 E Main
Independence, KS 67301
Phone: (620) 331-4060

~

Drive-Thru: 200 East Main
Independence, KS 64301
Phone: (620) 331-4060

McPherson

720 North Main
McPherson, KS 67460
Phone: (620) 241-4181

Montezuma

301 North Alvarado
Montezuma, KS 67867
Phone: (620) 846-2204

Salina

2061 South Ohio
Salina, KS 67401
Phone: (785) 825-4621

~

605 South Ohio
Salina, KS 67401
Phone: (785) 823-9226

Wichita

3100 E. Central Suite B
Wichita, KS 67214
Phone: (316) 684-1500

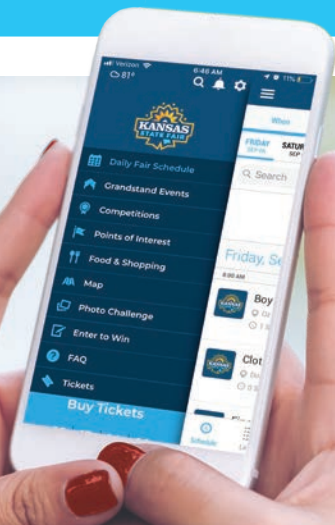


www.greatplainsfcu.com

Great Plains Federal Credit Union...Be More Than Just A Customer

PLAN YOUR FUN AT YOUR FINGERTIPS!

Find your way. Save your favorites. Purchase tickets. Have more fun!



The Kansas State Fair App is sponsored by:



Want to find the nearest cheese curds? Need a bathroom in a hurry? Searching for a product — maybe a new mop or a fancy grill — to help make your life easier?

Or, perhaps, you just don't want to miss any of the Kansas State Fair action.

The answers — plus more — can be found in the Kansas State Fair's new mobile app.

The app, sponsored by Mattress Hub, is free to download for both iPhone and Android devices. It will help plan your day at the Fair.

What it includes:



ACCESS THE DAILY SCHEDULE

Stay up-to-date with all our events, contests, free concerts and much more.



BUY TICKETS

Don't have your Next-Tech Wireless Grandstand concert tickets purchased? No worries! Purchasing tickets through the app is easy!

INTERACTIVE FAIRGROUNDS MAP



Navigate the grounds easily with our GPS-based map.



FOOD FINDER

Find those once-a-year Fair food favorites. Learn more about all the new and traditional foods on this year's menu.

WHAT'S HOT

See what other fairgoers find popular at this year's Fair.



PHOTO HUNT

A scavenger hunt will take fairgoers around the grounds to different locations where they can take photos and win free prizes.



NEWS & FAQ

Get the latest weather, parking and everything else you need to know when planning your trip.

PLAN YOUR DAY

Create daily schedules of must-see music, events, entertainment and more.



WIN SOME KSF SWAG

Enter to win prizes, including concert tickets, gate admission, T-shirts.

REAL-TIME NOTIFICATIONS



No need to worry about missing the action in the birthing center or that next pig race. We'll send notifications on the day's happenings, whether it is news about an upcoming concert or when the next calf will be born.

WHAT'S NEW? A LOT!

TRAMS

You spoke. We listened. Trams will again circle the grounds during the 2019 Kansas State Fair thanks to a generous sponsorship from Westar Energy and Alliance for a Healthy Kansas.

The new trams, rented from Trams R Us, are self-contained with company-provided drivers. These trams offer a safe way to navigate the Fairgrounds. Check out the new Fair map in the guide or on our app for tram stop locations.

EQUINE PARADE AND OPENING CEREMONIES

The 2019 Fair will kick off with a draft and miniature horse parade at 5 p.m. Friday, Sept. 6, followed by opening ceremonies at 5:30 p.m. at Gottschalk Park.

NEW BRAND

The Kansas State Fair unveiled its new sunflower blue ribbon brand in January. See the new signage around the grounds, plus stop by our new merchandise booth at Gate 9 to buy branded items and apparel.

PRIDE OF KANSAS STAGE

Hear from Kansans about the exciting things they are doing in their communities. The new stage is located in the Pride of Kansas Building.

CONSTRUCTION CAREERS ALLIANCE FOR KANSAS

Construction careers will be highlighted daily in an interactive exhibit in the Ad Astra Building.

TALKING TOMBSTONE TRAIN TOURS - FRIDAY, SEPT. 6

Travel back to the early days of the Kansas State Fair on the Talking Tombstone Train Tour. This unique event is in partnership with Hutchinson's Stage 9. Learn about four real people who were instrumental in building the Fair's foundation while riding the KSF Railroad. Purchase tickets in advance at the Fair's Ticket Office or call (620) 669-3618 to purchase tickets.

DISCOVER MORE

new Fair features inside our guide



FREE CONCERT SERIES

The new Tuesday and Thursday free concert series features up-and-coming national entertainers that you can see first at the Kansas State Fair. Learn more on Page 17.

PRONTO PUP EATING CONTEST

Put your Pronto Pup eating skills to the test. Learn more on Page 11.

EXPLORE KANSAS FESTIVAL

Discover Kansas communities at this first-ever festival. Learn more on Pages 23-24.

NEW TASTES OF THE FAIR

KANSAS' BIG PORK SHANK

This pork shank is smoked to perfection with a sweet Caribbean seasoning.

Location: Y-2 Enterprises, 306 Cottonwood Ave.



KRISPY KREME HOT DOG

Just when you thought Carousel Cafe's Krispy Kreme hamburger was quirky. Behold, the Krispy Kreme hot dog covered in bacon. A fresh jelly-stuffed Krispy Kreme donut is used as the bun. It's filled with an Angus beef hot dog topped with more jelly and finished off with thick Applewood smoked bacon.

OTHER CAROUSEL CAFE FAVORITES:

Mac Attack: This creation is a juicy beef burger with beer-battered, deep-fried macaroni as the bun. The beef comes from Yoder Meats in Yoder.



Roni Dog: This is nothing short of classic. It doesn't get any better than America's favorite bacon and cheddar sausage, topped with classic mac n' cheese and sprinkled with bacon bites.

Carousel Cafe is located across from the KWCH Channel 12 Building on Fort Riley Boulevard.



HONEY BUN BURGER

Fresh beef patties from Yoder Meats are sandwiched between two warm Honey Buns, then topped with fresh veggies, often served with a slice of melted cheese. To top it off, you can add Applewood smoked bacon OR chocolate covered bacon, which serves as the perfect compliment to this sweet and salty burger! **Location:** Carousel Cafe



DOLE WHIP

The perfect mixture of creamy and fruity is served from a soft-serve machine, creating a refreshing treat the entire family will love. It's also non-dairy. **Location:** Carousel Cafe



Find your favorite Fair foods with the new Kansas State Fair mobile App.

FRIED CHEESECAKE BITES

A new twist on cheesecake! Deep fried and bite sized. No mess, just deliciousness. Topped with powdered sugar and cherry drizzle. Located at **Brackett Concession's** cookie dough stand, 303 Fort Riley Boulevard.



PAPA PUP

Just when you thought life couldn't get any better ... the 10-inch Papa Pup is here! This giant of a Pronto Pup is hickory smoked and cooked in the original Pronto Pup batter.

Located at **D & J Pronto Pups'** five yellow booths stationed around the Fairgrounds.

HOMEMADE BEEF SNACK STICKS

In addition to their menu of fresh beef burgers, steak sandwiches and the nacho supreme, Jackson Meat will now offer Homemade Beef Snack Sticks. These sticks are great for on-the-go and hot fair days. Try them at Cattleman's Café located in Prairie Pavilion.

OTHER JACKSON MEAT FAVORITES:

Cow Pattie: A bed of crispy fries, layered high with fresh smoked pulled pork, warm cheese sauce, drizzled BBQ and a dollop of sour cream.

Location: Cattleman's Cafe in Prairie Pavilion.

BEST OF THE REST

PRONTO PUPS

Pronto Pups are different than traditional corn dogs. It's been a fair staple for decades. The breading is made of rice, wheat and barley – giving it a hint of sweetness. There are five Pronto Pup booths stationed around the fairgrounds so that you're never too far away from a fix.

APPLE DUMPLINGS

Staff at Wheatland Cafe are up before the sun rises to prepare

these Fair favorites. And, you can buy them ala mode.

Location: Pride of Kansas Building



OUR LADY OF GUADALUPE MEXICAN FOOD

The Our Lady of Guadalupe booth serves the kind of enchiladas you grew up eating at church fundraisers. They also have fried flour tacos, tamales, pork tostadas,

burritos and some of the best Mexican rice and beans you'll have outside your mama's kitchen.

Location: Inside Cottonwood Court.

KANSAS DAIRY ASSOCIATION DAIRY BAR

People traditionally stand in long lines to get a taste of this ice cream, which comes in dishes, sugar cones or waffle cones.

Location: Underneath the Grandstand.



CHEESE CURDS

There aren't words to

describe the greasy, gooey texture of this fried cheese delicacy, made more delicious dipped in a side of pizza sauce.

Location: O'Neil Amusements booths, 305 Bison Blvd. and 305 Fort Leavenworth Blvd.

CHICKEN AND NOODLES

One of the Fair's most famous foods is the chicken and noodles sold by the folks at the South Hutchinson Methodist Church. It's home cooking at its best and nothing is more comforting on a cool fall day – the first of which almost inevitably arrives each year sometime during the fair.

Location: Inside Cottonwood Court.

LISTEN UP!

Here's everything you need to know to navigate the fried food, the midway, the barns and the rest of the Kansas State Fairgrounds.

WHAT YOU *can* BRING:

You can bring the following items into the Fair: Wagons, coolers with non alcoholic beverages, service animals and your own food. For more information on items that are allowed in the Fair, see the Frequently Asked Questions on the Fair's website — www.kansasstatefair.com.



WHAT YOU *can't* BRING:

Bicycles, skateboards, pets, alcohol and glass bottles. Bicycle racks are located at Gate 1, 20th Avenue and Poplar Street; and Gate 3, 23rd and Main; and Gate 9, 20th and Plum.



PUBLIC *parking lot* SHUTTLES:

This service makes continuous rounds in the public parking lots to transport fairgoers to the nearest entrance gate. Operation hours are from 10 a.m. to 30 minutes after the Grandstand show ends. This is a FREE service.

mall SHUTTLES:

On weekends, the Fair offers free shuttle trips from the Hutchinson Mall: Shuttles run continuously from the Hutchinson Mall to Gate 1. Look for signs in the southwest parking lot. Hours: Sept 7-8 and Sept. 14: Noon to 11 p.m.; Sept. 15 — Noon to 8 p.m.



ADA ACCESSIBLE PARKING

There are three paved areas available in the public parking lots: Gate 5, south of State Fair Road; Gate 8, 23rd Avenue and Plum Street; Gate 9 - East 20th Avenue and Plum Street.



WHEELCHAIR/ STROLLER/ MOBILITY CART *rentals*:

Available on a first-come, first-serve basis in two locations: south of Gate 5 and west of Gate 9. For more information, please contact Scootaround Mobility Rentals at 1-888-441-7575 or visit <https://locations.scootaround.com/kansasstatefair>.



Nursing MOTHERS' ROOMS:

Nursing Mothers' Rooms offer privacy and a quiet atmosphere. Rooms are located at the Encampment Building, Cottonwood Court in the Women's Restroom and the First Aid Station at the west end of the Administration Building.

ADVANCED GATE ADMISSIONS:

Purchase your Kansas State Fair tickets by Sept. 5 to get discount gate admission! Ticket outlets include the Kansas State Fair ticket office, 2000 N. Poplar, or any Kansas Dillons store. Military tickets can be purchased at McConnell Air Force Base.

GATE ADMISSION

TYPE	BEFORE SEPT. 6	SEPT. 6-15
Adult (age 13+)	\$7	\$10
Child (age 6-12)	\$4	\$6
Senior (age 60+)	\$4	\$6
Military w/ ID (age 6+)	\$4	\$4

SEASON PASS

\$40 (\$100 Value)

- ◆ 10 gate admissions scans on credit card-style card
- ◆ Can be used one per day, all at once, or in any increment

For more information on our kids, family and couples packages, visit kansasstatefair.com and click on Buy Tickets.



FIRST AID:

Located at the west end of the Administration Building.



GATE ADMISSION HOURS:

11 a.m. to 9 p.m.
Sept. 6
7 a.m. to 9 p.m.
Sept. 7-14
7 a.m. to 6 p.m.
Sept. 15

NEW CHANGES IN 2019

COMMERCIAL BUILDING HOURS

Nex-Tech Wireless Grandstand Exhibit Space: 10 a.m. to 9 p.m. daily. All other commercial buildings — 8 a.m. to 8 p.m.

GATE CHANGES

Where to buy tickets: Only a handful of gates will be selling tickets this year. Purchase your tickets at Gate 1, Gate 3, Gate 4, Gate 5, Gate 7, Gate 8 and Gate 9. Signs will be posted at gates directing patrons to where they can purchase tickets.

DRIVE ONLY GATES

Gate 2, Gate 6, Gate 10 and Gate 11 are drive-only gates. Those walking in will be directed to another gate for entry.

MILITARY DISCOUNT AND TICKET OUTLET

Show your military ID for \$4 gate admission anytime! A new ticket outlet at McConnell Air Force Base is also selling gate admission and Nex-Tech Wireless Grandstand Concert Tickets.

INFORMATION BOOTHS

Information booths will now be located at Gates 5, 8, and 9, plus under the missile at the Visitor Center.

MERCHANDISE

A new Fair Merchandise location, with new Kansas State Fair brand merch, will be near Gate 9. The Kansas State Fairgrounds Foundation merchandise booth is located at the southeast corner of Grandstand Avenue and Fort Riley Boulevard next to the fountain. Both locations are open 10 a.m. to 7 p.m. daily.

EDUCATION CENTER

The Fair's new Educational Center will have educational programming from 8 a.m. to 8 p.m. Staff will be selling educational-related merchandise at this location.



renoirlabs.com

Facial Rejuvenation

Cutting-Edge LED Anti-Aging

YOUNGER - HEALTHIER SKIN

- Dual Action Technology
- 100% Safe & Natural
- Dermatologist Tested
- Lifetime Warranty

www.RenoirLabs.com



LOCATED IN THE
MEADOWLARK BUILDING, #87 & #88



SCHEDULE OF EVENTS

Friday, Sept. 6 *Showmanship*

Meat Goat	Noon
Swine	1:30 p.m.
Sheep	3 p.m.
Beef	4:30 p.m.

Saturday, Sept. 7 *Market Show*

Meat Goat	8 a.m.
Swine	8 a.m.
Sheep	8 a.m.
Beef	9 a.m.
Grand Drive & Gala	6 p.m.

Sunday, Sept. 8 *Breeding Show*

Goat	8 a.m.
Swine	8 a.m.
Sheep	8 a.m.
Beef	8 a.m.

CELEBRATING THE 20TH YEAR

It started with a dream of supporting Kansas State Fair 4-H and FFA livestock exhibitors.

Twenty years later, the Fair's Grand Drive has attracted thousands of purple-ribbon hopefuls from all corners of Kansas — some who have even raised their animals since birth — for their biggest state competition yet.

The State Fair has always been the drive of the state's finest livestock since the first official Fair in 1913. And, since its first show in 2000, the Grand Drive has expanded on the opportunity to show the best.

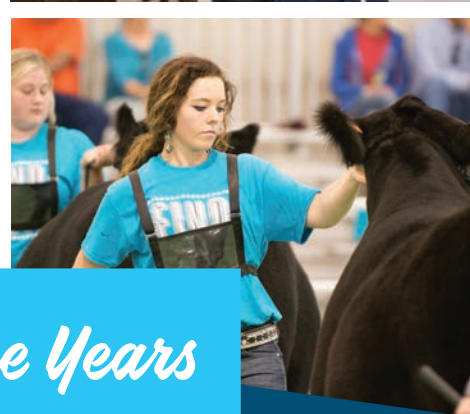
In 1999, Jim and Darla Mosbarger developed the idea while traveling home from another youth livestock event. They saw a need for a premier youth livestock show at the State Fair, and they envisioned the Fair as the culmination of a season of long hours and dedication.

In November of that year, the Mosbargers pitched the idea to the Fair's general manager and the Grand Drive was officially born.

The Grand Drive started out with five breeds of market lambs, five breeds of market hogs and nine breeds of steers. It's grown in exhibitors and animals since then, drawing nearly 2,500 livestock and a total purse of more than \$133,000.

"The goal of the Grand Drive when it started was to bring volunteers and sponsors together to celebrate and recognize the accomplishments of the dedicated youth involved in 4H, FFA and livestock exhibition," said Jenn Galloway, the Competitive Exhibit Livestock Director for the Kansas State Fair.

Now, 20 years later, that is still the Fair's mission, she said.



Through the Years

- PGD** Pre- Grand Drive: Steers were shown at the fair but the prize was a \$10 gift certificate and only about 10 steers actually competed in the show.
- 1999** Jim and Darla Mosbarger develop the idea of having premier livestock show at the Kansas State Fair.
- 2000** First-ever Grand Drive at the Kansas State Fair.
- 2004** Event is moved from Bison Arena to Prairie Pavilion.
- 2006** Midwest Ford Dealers becomes the main sponsor.
- 2007** The breeding division is added for all animals.
- 2011** Meat goats are added.
- 2018** The Grand Drive adapts to the present-day technology with the Walton Webcast and LED screens in Prairie Pavilion.
- 2019** NEW THIS YEAR: A doe goat show will be introduced. Also new is the Grand Drive Scholarship, which will award 10 individual \$1,000 scholarships

2018 BY THE NUMBERS

2,453
ENTERED

\$133,685.00
PREMIUMS PAID

225
SPONSORS

EQUINE EXPERIENCES

These gentle giants are nearly one-ton horses known for their solid strength not their speed and agility.

But this year, draft horses, which are normally shown pulling carts or wagons, will participate in barrel racing during the 2019 Kansas State Fair.

It's a first for the Fair and one of many new events taking place over the 10 days, said Competitive Exhibits Director Jenn Galloway.

Galloway said they are adding a working equitation clinic, mounted archery and other competitions, as well as demonstrations.

Events include:

- ♦ **Draft and Miniature Horse Parade:** The parade will circle the grounds beginning at 5 p.m. Friday, Sept. 6.
- ♦ **Mustang Days:** Youth get the opportunity to train wild yearlings in the Mustang Beginnings Youth Challenge. Youth work with gentling the Bureau of Land Management wild horses over the summer then demonstrate their training skills Sept. 14-15.
- ♦ **Draft Horse Costume Contest:** Sept. 7. All entry fees will go to the Cancer Council of Reno County.
- ♦ **Interactive Children's Activities:** Build-your-own stick horse, stick horse races and story time with Brandy Von Holten, author of "Adventures at the Von Holten Ranch."



SCHEDULE OF EVENTS

DATE TIME EXPO CENTER

Fri, Sept. 6	Noon	Draft Horse Show
Sat, Sept. 7	9 a.m.	Draft Horse Show
	4 p.m.	Draft Team Pull
Sun, Sept. 8	10 a.m.	Draft Horse Show
Mon, Sept. 9	8 a.m.	Working Equitation
Tues, Sept. 10	9 a.m.	Mounted Archery & Country Tough Trail & Versatility
	11 a.m.	Children's Equine Adventure Story Time
	1 p.m.	Children's Equine Adventure Story Time
	2 p.m.	Children's Equine Adventure Story Time
Wed, Sept. 11	9 a.m.	Dog Agility/Rally/Meet the Breed
Thur, Sept. 12	2 p.m.	State 4-H Horse
Fri, Sept. 13	8 a.m.	State 4-H Horse
Sat, Sept. 14	8 a.m.	State 4-H Horse
	3 p.m.	Mustang Beginnings Youth Challenge
Sun, Sept. 15	8 a.m.	Mustang Beginnings Youth Challenge

DATE TIME EXPO II

Fri, Sept. 6	8 a.m.	Llama Show
Sat, Sept. 7	9 a.m.	Miniature Horse Show
Sun, Sept. 8	8 a.m.	Working Equitation Clinic
Wed, Sept. 11	10 a.m.	American Freedom Riders
	12 p.m.	American Freedom Riders Military Tribute
	2 p.m.	American Freedom Riders
	4 p.m.	American Freedom Riders
	6 p.m.	American Freedom Riders
Thur, Sept. 12	2 p.m.	State 4-H Horse
Fri, Sept. 13	8 a.m.	State 4-H Horse
Sat, Sept. 14	8 a.m.	State 4-H Horse
	3 p.m.	Mustang Days Fun Show
Sun, Sept. 15	10 a.m.	Mounted Shooting



BREW, BUTTER AND MUCH, MUCH MORE

NEW COMPETITIONS OF

2019

For more than 100 years, the Kansas State Fair has been showcasing the best of the best.

That includes the best livestock, the best crops, the best pies and pastries, to name a few. Now, for 2019, the State Fair is adding even more unique and exciting competitions to its already broad lineup.

PANCAKE FLIPPING

All ages can enter the pancake flipping challenge, which takes place at 10 a.m. Sept. 8 in the Domestic Arts Building.



RED, WHITE AND BREW

Go head-to-head against Kansas' best Homebrewers in the "Red, White and Brew" beer brewing contest, sponsored by Brew 56. Brewers will be judged and critiqued by members of the Kansas craft beer industry and the Beer Judge Certification Program. The competition includes several beer styles: American Lager; American Pale Ale; American IPA; American Amber Ale; American Brown Ale; American Porter; American Stout; and American Wheat Beer. A best of show award will recognize the best overall beer in the state of Kansas. Find the winners in the Domestic Arts Building.

SCARECROW CONTEST

The Fair still has a traditional scarecrow contest, but this new competition involves teams building a scarecrow - dressed and stuffed to perfection - in "real-time." The on-site competition is at 11 a.m. Sept. 14 in the Pride of Kansas Building.

MINIATURE BUTTER SCULPTURES

The butter sculpture in the Pride of Kansas Building is legendary. But this year, you can test your skill at butter sculpting. This first-ever contest takes place at 1 p.m. Sept. 7 in the Pride of Kansas Building. The fair will provide a pound of butter and a few plastic utensils. Participants can bring an additional item such as wire, tubing or special carving tools.



GOVERNOR'S TEA CUP

Besides the traditional Governor's Cookie Jar category, the Fair is now adding a Governor's Tea Cup. Professionals are eligible to enter a hand-painted china teacup in this contest. The winner will present the cup to Gov. Laura Kelly during the Governor's Award Ceremony. The teacup will be on display in the Oz Gallery Arts Building.



STACKER SANDWICH CONTEST

Does your sandwich stack up? See if you have what it takes to create a mouthwatering stacker sandwich. The Sept. 8 event, sponsored by The Hickory Stik, takes place at 1:30 p.m. in the Domestic Arts Building.

BARN QUILT COMPETITION

Past years, the Fair has had a category for 2-foot-by-2-foot quilts. This year's competition consists of larger sizes — 4-foot-by-4-foot and 8-foot-by-8-foot quilts that will be displayed around the fairgrounds. A map will allow fairgoers to view and judge each quilt. The overall winner will receive a \$150 prize and his or her quilt will become the property of the Kansas State Fair to display, adding to the Fair's permanent Barn Quilt Trail. Sponsored by Mennonite Friendship Communities.



PROFESSIONAL FLORIST CONTEST

Professional florists have the chance to claim the title "State Fair Florist of the Year" in this new competition. The winning entry will be presented to the Kansas State Fair Board president.



RECYCLED SLEEPING MATS

Put your creativity and ingenuity to a good cause by making lightweight and waterproof sleeping mats from recycled plastic grocery bags. Your creations will be donated to organizations across Kansas that help individuals in need of assistance. This is a great opportunity to help the environment. The finished work will be on display in the Domestic Arts Building.

For more information about the Fair's many Competitive Exhibit categories, visit: KansasStateFair.com and click on Participate. Entry deadline is Aug. 15. A late fee is applied to entries after this date.



NEW PROFESSIONAL ARTS LOCATION

Come see the Fair's new Professional Arts galleries! Professional art exhibits are now located northeast of Lake Talbott across from the 4-H Centennial Hall.

SPECIAL EVENTS:

HERE'S A FEW OF OUR QUIRKY AND FUN SPECIAL CONTESTS HAPPENING THIS YEAR.



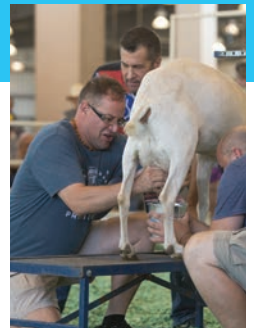
New!

PRONTO PUP EATING CONTEST

Here's an excuse to eat all the Pronto Pups you physically can in 10 minutes. And we're giving out awesome prizes! The \$15 entry fee covers your T-shirt and all the Pronto Pups you can eat. Or, come watch the action. The contest takes place at noon, Sunday, Sept. 15 on the Hutchinson Regional Healthcare System Stage at Lake Talbott. **Sponsored by D&J Pronto Pup**

CELEBRITY GOAT MILKING

Watch local celebrities squeeze their way to the top. Teams include local media, Kansas Highway Patrol and the Kansas State Fair Board. Returning to defend their title and keep the coveted "Golden Goat" trophy is Phil Thompson and Mark Good with 104.5 The Fox. Competition begins at 3 p.m. Friday, Sept. 13 at the Sheep, Swine, Goat Building.



MUTTON BUSTIN'

Enter your little buckaroo in the Mutton Bustin' Contest and test their inner cowboy/girl as they hold on for the ride of their life. To compete the contestant must have been top five in a rodeo the summer of 2019. Kansas Mutton Bustin' Championship Takes place Saturday, Sept. 7. **Sponsored by Continental Siding**

LEGISLATIVE SHOWMANSHIP

Come watch our Kansas legislators and other esteemed guests take a crash course in showing market steers under the mentorship of 4-H and FFA exhibitors. The showmanship takes place at 1:30 p.m. Saturday, Sept. 7 at Prairie Pavilion. **Sponsored by Kansas Fairs and Festivals Association.**



For a listing of all the Fair's special events, contests and times, visit the Plan Your Visit section on the Fair's website: KansasStateFair.com

WIRELESS



WARRIORS

CALLING ALL WARRIORS

PEDAL YOUR WAY TO POWER

TEST YOUR SPEED & AGILITY WITH PHONE TAG

COMPETE AGAINST FRIENDS & FAMILY

RACE TO UNSCRAMBLE PHOTOS

Located at 124 Cottonwood Ave. on the Fairgrounds

Play games and tech challenges when the U.S. Cellular® Wireless Warriors tour visits the Kansas State Fair - and enter to win a \$10,000 wireless prize package at WirelessWarriorSweepstakes.com

No Purchase Necessary. Open to residents of the 50 United States/D.C. 18 yrs + (19+ if a resident of AL or NE). Void elsewhere and where prohibited. Ends 10/28/19. For Official Rules, including full entry/prize details, and to enter online, visit www.WirelessWarriorSweepstakes.com

DAILY THEMES & HIGHLIGHTS



Demonstrations, competitions, livestock shows and plenty of food and thrills to go around, we have a lot packed into 10 days of the Fair. Check our new Kansas State Fair app for our full schedule. Here are a few highlights.

FRIDAY, SEPT. 6

Welcome Back!

Welcome back to Fair! Meet up with your friends and family for a night out.

- All Day** Construction Careers Alliance for Kansas, Ad Astra Building
- Noon** Grand Drive Youth Showmanship, Livestock Barns
- 1 p.m.** Comic Hypnotist Ron Diamond, Bretz and Young Injury Lawyers Arena. Sponsored by Kuhn-Krause
- 5 p.m.** Red, White and Brew Finals, Domestic Arts
- 5 p.m.** Comic Hypnotist Ron Diamond, Bretz and Young Injury Lawyers Arena. Sponsored by Kuhn-Krause
- 5 p.m.** Equestrian parade, throughout Fairgrounds
- 5:30 p.m.** Opening Ceremonies, Gottschalk Park
- 6 p.m.** Medicine Lodge Peace Treaty Reenactment at Bretz and Young Injury Lawyers Arena
- 7 p.m.** Comic Hypnotist Ron Diamond, Bretz and Young Injury Lawyers Arena. Sponsored by Kuhn-Krause
- 7:30 p.m.** Bobby Bones and the Raging Idiots with special guest Nicolle Galyon and Emma Klein, Nex-tech Wireless Grandstand

SATURDAY, SEPT. 7

Explore Kansas Weekend

Sponsored by Saint Francis Ministries



Learn more about what Kansas has to offer during Explore Kansas Weekend. Communities from all across the state will be represented at this two-day event in Gottschalk Park. Communities also will give presentations at our new Pride of Kansas Stage in the Pride of Kansas Building.

- All Day** Construction Careers Alliance for Kansas, Ad Astra Building
- All Day** Grand Drive Youth Market Show, Livestock Barns

- 9 a.m. to 6 p.m.** Explore Kansas Festival, Gottschalk Park
- 9 a.m.** Toddler Games Driving School, Gottschalk Park
- 11 a.m.** WIBW Live at the Fair, Bretz and Young Injury Lawyers Arena
- 1 p.m.** Butter Sculpture Contest, Pride of Kansas
- 1:30 p.m.** Legislative Showmanship, Prairie Pavilion. Sponsored by Kansas Fairs and Festivals Association.
- 3 p.m.** Comic Hypnotist Ron Diamond, Bretz and Young Injury Lawyers Arena. Sponsored by Kuhn-Krause
- 3 p.m.** Celebrity Grape Stomp, Hutchinson Regional Healthcare System Lake Talbott Stage
- 4 p.m.** Catholic Mass, Hansen Auditorium, Encampment Building
- 5 p.m.** Comic Hypnotist Ron Diamond, Bretz and Young Injury Lawyers Arena. Sponsored by Kuhn-Krause
- 6 p.m.** Grand Drive Champion Animal Selection, Prairie Pavilion
- 7 p.m.** KSF Mutton Bustin' Championships, Expo II. Sponsored by Continental Siding
- 7 p.m.** Comic Hypnotist Ron Diamond, Bretz and Young Injury Lawyers Arena. Sponsored by Kuhn-Krause
- 7:30 p.m.** Billy Currington, Nex-Tech Wireless Grandstand

SUNDAY, SEPT. 8

Explore Kansas Weekend

The Kansas exploration continues into Sunday.

- All Day** Construction Careers Alliance for Kansas, Ad Astra Building
- All Day** Grand Drive Youth Breeding Show, Livestock Barns
- 10 a.m.** Worship services, Lutheran Laymen's League, Bretz and Young Injury Lawyers Arena
- 11:30 a.m.** King Arthur Flour Flapjack Contest, Domestic Arts

- 1 p.m.** Kansas State Fair Pedal Pull, Bretz and Young Injury Lawyers Arena. Sponsored by Verizon - Cellular Sales
- 1:30 p.m.** The Hickory Stik Stacker Sandwich Contest, Domestic Arts
- 2 p.m.** Arm Wrestling Championships, House of Capper
- 5 p.m.** Comic Hypnotist Ron Diamond, Bretz and Young Injury Lawyers Arena. Sponsored by Kuhn-Krause
- 7 p.m.** Comic Hypnotist Ron Diamond, Bretz and Young Injury Lawyers Arena. Sponsored by Kuhn-Krause
- 7:30 p.m.** Skillet, Nex-Tech Wireless Grandstand

MONDAY, SEPT 9

Dillons Dollar Day

Sponsored by Dillons



Find the real value of a dollar during Dillons Dollar Day. Pay \$1 at the gate or get in free with a Dillons Plus Card.

- All Day** Construction Careers Alliance for Kansas, Ad Astra Building
- All Day** Navy Day Activities, Gottschalk Park



- 7 a.m. to 4 p.m.** Emergency Preparedness Exhibit, Administration Building Parking Lot
- 8 a.m.** High School Marching Band Day
- 9 a.m. to 1 p.m.** High Voltage Safety Demonstrations, Ad Astra Building. Sponsored by Kansas Electric Cooperatives
- 10 a.m. to 3 p.m.** Weaving Day Demonstrations, Domestic Arts
- 10 a.m. to 2 p.m.** State Fair Promenaders/Hutchinson High School educational event, House of Capper
- 2 p.m.** State Fair Promenaders square dance lessons and program, House of Capper
- 3 p.m.** Comic Hypnotist Ron Diamond, Bretz and Young Injury Lawyers Arena. Sponsored by Kuhn-Krause
- 5 p.m.** Comic Hypnotist Ron Diamond, Bretz and Young Injury Lawyers Arena. Sponsored by Kuhn-Krause
- 7 p.m.** Comic Hypnotist Ron Diamond, Bretz and Young Injury Lawyers Arena. Sponsored by Kuhn-Krause
- 7:30 p.m.** Demolition Derby, Nex-Tech Wireless Grandstand, Sponsored by the Kansas Department of Transportation

TUESDAY, SEPT. 10

Foodie Fest

Bargain shoppers rejoice! If food is your thing, you won't want to miss this day. Dozens of your favorite food vendors will offer \$2 tasting portions so you can eat your way through the fair without eating a hole in your wallet. End the day with a free concert — "Little Hank Williams" himself — Mason Ramsey.

- All Day** Construction Careers Alliance for Kansas, Ad Astra Building



- 8 a.m.** High School Marching Band Day
- 9 a.m. to 1 p.m.** High Voltage Safety Demonstrations, Ad Astra Building. Sponsored by Kansas Electric Cooperatives
- 9 a.m.** HS Debate Showcase, Hansen Auditorium, Encampment Building. Sponsored by Kansas Wesleyan
- 11 a.m.** Comic Hypnotist Ron Diamond, Bretz and Young Injury Lawyers Arena. Sponsored by Kuhn-Krause
- 5 p.m. to 8 p.m.** Navy Day activities, Gottschalk Park
- 7:30 p.m.** Mason Ramsey, Bretz and Young Injury Lawyers Arena

WEDNESDAY, SEPT. 11

Kansas Cares

Celebrate all the ways Kansans care about their community. Non-profit organizations and agencies that work to make life better will demonstrate the work they do and how you can make a difference.

- All Day** Construction Careers Alliance for Kansas, Ad Astra Building
- 8 a.m.** High School Marching Band Day
- 9 a.m. to 3 p.m.** American Red Cross Bloodmobile blood donations, Administration Building Parking Lot
- 9 a.m. to 1 p.m.** High Voltage Safety Demonstrations, Ad Astra Building. Sponsored by Kansas Electric Cooperatives
- 9 a.m.** Veterans-Military Service Brunch, Dillon Hall, Encampment Building. Sponsored by Elliott Mortuary
- Noon to 2 p.m.** Hutchinson Mountain Dulcimer Educational Event, House of Capper
- 2 p.m. to 4 p.m.** Hutchinson Mountain Dulcimer Concert, House of Capper
- 2 p.m. to 4 p.m.** Pack Shack, meal packing event for the Kansas Food Bank, Dillon Hall in the Encampment Building. Sponsored by Dillons and Kansas State Fair
- 2 p.m. to 4 p.m.** Kansas Auctioneers Association Bid Calling Championship, Bretz and Young Injury Lawyers Arena
- 3 p.m.** Fresh Salsa Contest, Domestic Arts
- Noon** American Freedom Riders Military Salute, Expo II
- 4 p.m.** Comic Hypnotist Ron Diamond, Bretz and Young Injury Lawyers Arena. Sponsored by Kuhn-Krause
- 4:30 p.m.** Curly's All-Natural Barbecue Sauce Contest, Domestic Arts

- 5 p.m. to 8 p.m.** Navy Day activities, Gottschalk Park
- 6 p.m.** Navy Band Concert, Bretz and Young Injury Lawyers Arena
- 7:30 p.m.** Francesca Battistelli and Zach Williams, Nex-Tech Wireless Grandstand
- 7:30 p.m.** Comic Hypnotist Ron Diamond, Bretz and Young Injury Lawyers Arena. Sponsored by Kuhn-Krause



THURSDAY, SEPT. 12

Thrill-O-Rama

For all those adventure seekers, head to the Midway for thrills and fun. Purchase a wristband and experience the rides to your heart's content (or until your stomach can't take it anymore). End the day with a free concert — Lindsay Ell with special guest Madison Kozak.

- All Day** Construction Careers Alliance for Kansas, Ad Astra Building
- 9 a.m. to 1 p.m.** High Voltage Safety Demonstrations, Ad Astra Building. Sponsored by Kansas Electric Cooperatives
- 9 a.m. to 2 p.m.** High School Forensics Showcase, Hansen Auditorium, Encampment Building
- 11 a.m.** Comic Hypnotist Ron Diamond, Bretz and Young Injury Lawyers Arena. Sponsored by Kuhn-Krause
- 1:30 p.m.** Governor's Awards, Domestic Arts
- 5 p.m. to 8 p.m.** Navy Day activities, Gottschalk Park
- 7:30 p.m.** Lindsay Ell and Madison Kozak, Bretz and Young Injury Lawyers Arena. Sponsored by First Choice Communications - an AT&T Authorized Retailer.

CONTINUED ON PG 31

FREE PUBLIC PARKING LOT A

FREE PUBLIC PARKING LOT B



WHITE STAR

Come see us at Lake Talbot
Road & Fort Hays Blvd.
www.whitestarmachinery.com



Bobcat

THE BOBCAT CORRAL

PARKING
(PERMIT REQUIRED)

GATE
7

**MAINTENANCE
SHOP**



SNS

TAN PARKING
(PERMIT REQUIRED)

GATE
8

23RD AVE



PLUM ST

FREE PUBLIC PARKING LOT C

**MEDIA AND
VIP PARKING**

WILL CALL



**PETTING
ZOO**

**STATE FAIR
MERCHANDISE**

GATE
9

**SHEEP, SWINE,
& GOATS**
.....
**CREDENTIAL
OFFICE**

EXPO CENTER

EXPO II

HORSE BARN

GATE
10

PLUM ST

NORMAN RD



KANSAS STATE FAIR

2019 FAIRGROUNDS MAP



**ENTRANCE
GATES**

PURCHASE TICKETS HERE:
1 • 3 • 4 • 5 • 7 • 8 • 9
DRIVE ENTRANCE ONLY:
2 • 6 • 10 • 11



GRANDSTAND TICKETS



INFORMATION



ATM MACHINES



ADA ACCESSIBLE PARKING



TRAM ROUTE



TRAM STOP



SPECIAL ATTRACTIONS



FIRST AID



SMOKING AREA



POLLINATOR GARDENS



PUBLIC RESTROOMS



NURSING MOTHERS' ROOMS



EDUCATION CENTER



**KANSAS LARGEST
CLASSROOM LITTLE RED
SCHOOL HOUSE**

KANSAS STATE FAIR

◆◆◆◆◆ SEPT. 6-15 ◆◆◆◆◆

NEX-TECH[®]
wireless

GRANDSTAND
2019 CONCERT SERIES



7:30 pm
BOBBY BONES
AND THE RAGING IDIOTS
NICOLLE GALYON
\$20-\$65

FRI, SEPT. 6




7:30 pm
BILLY CURRINGTON
\$25-\$65

SAT, SEPT. 7



7:30 pm
SKILLET
\$20-\$55

SUN, SEPT. 8



7:30 pm
DEMOLITION DERBY
\$10 GENERAL ADMISSION
12 AND UNDER FREE

MON, SEPT. 9



7:30 pm
FRANCESCA BATTISTELLI
ZACH WILLIAMS
\$20-\$50

WED, SEPT. 11



7:30 pm
LAUREN ALAINA
MITCHELL TENPENNY
\$20-\$55

FRI, SEPT. 13



7:30 pm
HANSON
\$20-\$55

SAT, SEPT. 14



3:00 pm
ALL STAR MONSTER TRUCKS
\$5-\$35


SUN, SEPT. 15

WANT TO PARTY ALONGSIDE
YOUR FAVORITE ENTERTAINERS?

A NEW BRANDED AREA AT THE NEX-TECH WIRELESS GRANDSTAND
WILL PROVIDE FAIRGOERS WITH A PREMIUM PARTY EXPERIENCE!

THE BUD LIGHT PARTY PIT INCLUDES:

- The best location next to the Nex-Tech Wireless Grandstand stage
- Standing-room-only, party experience for 400 general admission attendees Sept. 6, 7, 8 and Sept. 13-14.
- Ticket prices from \$50 to \$65 (depending on the concert)
* Fans under 21 are welcome in this area.



The Bud Light Party Pit,
sponsored by City Beverage
of Hutchinson, is an exclusive
standing-room section right
in front of center stage.

FREE CONCERT SERIES

◆ ◆ ◆ **AT** ◆ ◆ ◆
BRETZ & YOUNG
INJURY LAWYERS

ARENA

MASON RAMSEY, LINDSAY ELL TO HEADLINE KANSAS STATE FAIR'S NEW FREE CONCERT SERIES

Two up-and-coming country acts will headline the new free series at Bretz and Young Injury Lawyers Arena.

Mason Ramsey, the 12-year-old "Little Hank Williams," will perform Tuesday, Sept. 10. Lindsay Ell, this year's Country Music Association's Newcomer of the Year nominee, will take the stage Thursday, Sept. 12, with special guest Madison Kozak. Both concerts start at 7:30 p.m.

Ell's concert is sponsored by First Choice Communications, an authorized AT&T Retailer.

This new venue will have the same beverage amenities available as the grandstand. Beer sales in the arena will start at 6 p.m. and conclude at the end of the show. Food vendors will also be available nearby. Seating is first come, first serve. Fairgoers will be able to stand in front of the stage or take a seat in the stands.



**TUESDAY
SEPT. 10 @ 7:30
MASON
RAMSEY**

- ◆ His single, "Famous" has surpassed 60 million streams and is on the way to becoming a gold record
- ◆ Performed at Coachella and Stagecoach music festivals
- ◆ Featured in Rolling Stone and Billboard
- ◆ Performed with Florida Georgia Line during their Las Vegas residency
- ◆ Discovered after a video of him singing Hank Williams' "Lovesick Blues" at an Illinois Walmart went viral
- ◆ Released new single "Twang" in June
- ◆ Provided a guest rap verse on the "Old Town Road" remix

Other

BRETZ & YOUNG ARENA

◆ ◆ ◆ *Highlights* ◆ ◆ ◆

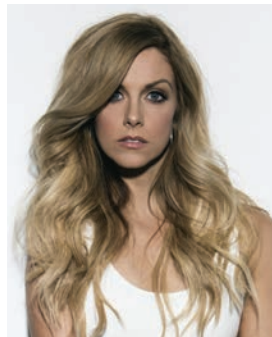
CASI JOY

A seasoned performer, she led a highly-touted run on NBC's The Voice, where she instantly turned all four chairs and was singled out by Rolling Stone as having one of the Top 10 blind auditions of all time. Joy, who melds traditional country and modern pop, has opened for Easton Corbin, LOCASH and Dustin Lynch. Joy will perform at 6 p.m. at the Bretz & Young Injury Lawyers Arena before the Lindsay Ell concert.

RON DIAMOND

One act that never gets old is comic hypnotist Ron Diamond. Sponsored by Kuhn-Krause, Diamond performs daily at the Bretz & Young Injury Lawyers Arena.

**THURSDAY
SEPT. 12 @ 7:30
LINDSAY ELL**



- ◆ 2019 ACM nominee for New Female Artist
- ◆ Toured internationally with The Band Perry, Luke Bryan, Brad Paisley and blues legend Buddy Guy
- ◆ Plays multiple instruments and writes most of her own songs
- ◆ Currently featured on a Brantley Gilbert single "What Happens in a Small Town"
- ◆ Single "Criminal" went No. 1 on Canadian Country charts



*special
guest*

**MADISON
KOZAK**

- ◆ Opened for artists such as Willie Nelson and Morgan Wallen
- ◆ Performed at the CMA Festival and Nashville's legendary Bluebird Cafe
- ◆ Released a four-song EP "Heartbreak School"
- ◆ Had her first performance at the Ryman in early June with Keith Urban



**FIRST CHOICE
COMMUNICATIONS**
An Authorized AT&T Retailer

MIDWAY

SCHEDULES, DEALS AND MORE



GREAT DEALS

FAIRGROUNDS RIDE PUNCH CARD, \$10

Allows for one ride each on the Ye Old Mill, Lake Talbott Boats, Giant Yellow Slide and KSF Railroad. A \$12.50 value. Purchase at the Kansas State Fair Ticket Office. Not available after Sept. 5.

WRISTBANDS, \$30*

Ride any ride on the Midway as many times as you want on ONE wristband day.

DILLONS RIDE SHEETS, \$25*

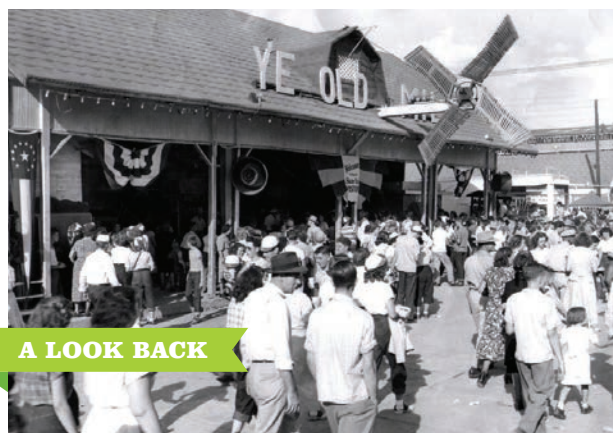
Purchase a sheet of 20 ride tickets good for rides on the Midway. Buy at the KSF ticket office or at Dillons before Sept. 6 and save \$5.

**(excludes Train, Sky Ride, Ye Old Mill, Big Slide and Boat Ride). Available at the KSF Ticket Office or online at www.kansasstatefair.com*

MIDWAY SCHEDULE

DATE SPECIALS TIMES

Fri, Sept. 6	Wristband Day	3 p.m. - 11 p.m.
Sat, Sept. 7		11 a.m. - 11 p.m.
Sun, Sept. 8		Noon - 10 p.m.
Mon, Sept. 9	One Ticket per Ride	Noon - 10 p.m.
Tues, Sept. 10	Wristband Day	1 p.m. - 10 p.m.
Wed, Sept. 11	Wristband Day	Noon - 10 p.m.
Thurs, Sept. 12	Wristband Day	Noon - 10 p.m.
Fri, Sept. 13	Wristband Day	Noon - 11 p.m.
Sat, Sept. 14		11 a.m. - 11 p.m.
Sun, Sept. 15	Wristband Day	Noon - 8 p.m.



A LOOK BACK

Historic Ye Old Mill

For 104 years, Ye Old Mill has provided entertainment to the masses.

More than likely, in fact, the Kansas State Fair icon is among the oldest working carnival rides in the state.

Ye Old Mill opened in 1915. Just as it did when it first opened, a large mill wheel still moves the water and the boats down a darkened channel. However, when it first opened, it was a tunnel of love rather than the haunted ride it is today.

Today, riders entering the 1,000 feet of channels are greeted with scary props and people jumping out of dark corners.

FAIRGROUND RIDES SCHEDULE

RIDE	PRICE	TIME
Big Slide	\$2 (4 for \$7)	9 a.m. - 7:30 p.m.
Boat Ride	\$4	9 a.m. - 7:30 p.m.
Sky Ride*	\$4 One-Way, \$6 Roundtrip	9 a.m. - 7:30 p.m.
State Fair Railroad*	\$3	9 a.m. - 7:30 p.m.
Ye Old Mill	\$3.50	10 a.m. - 10 p.m.
Talking Tombstone Tour*	\$25 per person Limited Quantity (136)	Fri, Sept. 6 Only: Train 8:30, 8:45, 9:15, 9:30

* Tickets can be purchased at KSF Ticket Office: 2000 N. Poplar St, Hutchinson





FOREVER BEAUTY

**VISIT US AT THE GRANDSTAND
BOOTHS #55 & #56**

THANK YOU TO OUR SPONSORS!



Platinum:



Main Street & Plum Street
Message Center Signs



Official Tractor & Gator
Supplier



Grandstand



Official Lawn Mower
Supplier



Bretz & Young Injury
Lawyers Arena



Adorable Pig Races



Education Partner



Mobile App



Tram & Grandstand
Screens



Lake Talbott Free Stage



Dillon's Dollar Day



Lindsay Ell & Madison
Kozak Free Concert

Gold:



Tram Sponsor –
Half

Grand Drive & Small
Animal Scale

Day Sponsor –
Sun. Sept. 15

Legislative
Luncheon

Day Sponsor –
Sat. Sept. 7

Day Sponsor –
Sat. Sept. 14



Kansas State Fair
Vehicle Wraps,
Signage & Patio
Partner – Billy
Currington

Gottschalk Park
Entertainment

Kansas State Fair
Scratch Ticket

Ron Diamond & FFA
Education

Silver:

Aqua Haven

Bradbury Manufacturing

City Beverage

Continental Siding

Corteva Agriscience

Dish – USA Expo

DishOne-Sprint

Forever Beauty

Hyatt Life Sciences

Kansas Corn Commission/
Kansas Corn Growers
Association

Kansas Department of
Wildlife, Parks & Tourism

Kansas Electric Cooperatives

Moly Manufacturing

Nature Hill NV

Renoir

Thrasher

Traeger Grills

Verizon – Cellular Sales

Bronze:

American Packaging

Ascension Via Christi Hospitals
Wichita, Inc.

B & W Trailer Hitches

Crosspoint Church

Elliott Mortuary

First Church of the Nazarene –
Hutchinson

Galyon Brothers Construction

Hi-Tech Interiors –
Construction Careers Alliance
For Kansas

Kansas Department of

Transportation

Kansas Fairs & Festivals
Association

Kansas Wesleyan University

Long McArthur Roush

Lutheran Layman's League

Mennonite Friendship
Communities

O'Reilly Auto Parts

Propane Marketers
Association of Kansas

Southwest Dairy Farmers

Star Lumber/Leech Adhesives

U.S. Cellular

D&J Pronto Pup

Premium Partner:



**BlueCross BlueShield
of Kansas Foundation**

An independent licensee of the Blue Cross Blue Shield Association.

**Sudys's Barn Hand
Washing Station**

Media Partners:

**BOBBY BONES & THE RAGING IDIOTS
W/ NICOLLE GALYON & EMMA KLEIN**

Presenting Sponsor:

KAKE

KZSN (102.1 The Bull – iHeart)

Steckline Comm: KGBL (Western KS)
KQLA (Manhattan KS – Eagle)
KSKG (Salina KS – Eagle)

BILLY CURRINGTON

Presenting Sponsor:

KWCH

KHUT (Hutchinson – Eagle)

KZSN (102.1 The Bull – iHeart)
Summit Media KFDI (101.3)

SKILLET

Presenting Sponsor:

KICT (T-95)

KCCV; KJRG
(Christian – Bott)

**FRANCESCA BATTISTELLI
& ZACH WILLIAMS**

Presenting Sponsor:

KSN

KRBB (B98 – iHeart)

KCCV; KJRG (Christian – Bott)
KHMY (Hutch – Eagle)

**LAUREN ALAINA
W/ MITCHELL
TENPENNY**

Presenting Sponsor:

KWCH

Summit Media KFDI
(101.3 – Scripps)

HANSON

Presenting Sponsor:

KSN

KEYN (103.7 – Entercom)
KRBB (B98 – iHeart)
KHMY (My 93.1 Hutch)

**DEMOLITION
DERBY
MONSTER**

Presenting Sponsor:

Ad Astra

**ALL STAR
MONSTER TRUCKS**

Presenting Sponsor:

Steckline Comm:
Mid-America
Ag Network

MASON RAMSEY

Presenting Sponsor:

KHUT
(Hutchinson – Eagle)

**LINDSAY ELL W/
MADISON KOZAK**

Presenting Sponsor:

KZSN (102.1 The Bull –
iHeart)

New!

EXPLORE KANSAS FESTIVAL

HIGHLIGHTING KANSAS CULTURE, HISTORY AND ATTRACTIONS

WHEN

SEPTEMBER 7-8

WHERE

GOTTSCHALK PARK

HOURS

9 A.M. TO 6 P.M.

2



A new festival the first weekend of the Kansas State Fair will feature the treasures and attractions found in Kansas communities.

COMMUNITIES REPRESENTED:

1 Erie – Since 1873, Erie has hosted the oldest consecutively running Old Soldiers and Sailors Reunion. The July event features a “Free Bean Feed.” Volunteers cook 1,400 pounds of beans over fire in cast-iron kettles, just like Civil War soldiers. Also learn about the Erie Dinosaur Park, “Green School” eating and the area’s amenities.

Ark City’s Lost City of Etzanoa – The recently discovered lost Native American city is now an attraction in Arkansas City. Learn more and dig for artifacts at the community’s booth.

Santa Fe Trail – Between 1821 and 1880, the Santa Fe Trail connected commerce between Missouri and Santa Fe, New Mexico. More than half the trail runs through Kansas and many remnants still exist. The Santa Fe Trail Association will celebrate the trail’s heritage and the upcoming 200th anniversary.

Southeast Kansas Tourism Region – Sample the treasure-trove of activities and events in southeast Kansas, including day-trip ideas, the area’s outdoor tourism, interactive games and performers.

2 Lindsborg Convention and Visitors Bureau – Experience “Little Sweden,” including the Birger Sandzen Memorial Gallery, Red Barn Studio, Hemslojd- Dala Horse Factory, Coronado Heights and more.

Newton Convention & Visitors Bureau – Newton was founded in 1871 as the Santa Fe Railroad chugged westward and cowboys drove cattle up the Chisholm Trail from Texas. Learn more about the area’s history and activities, plus experience old-fashioned games from the Kauffman Museum.



3 Northwest Kansas Byways – From the spectacular Arikaree Breaks in Cheyenne County, to the canyons of Sherman and Wallace County, northwest Kansas is full of scenery and history. Learn more about eight different road trips, which highlight fossil and art museums; Lucas' Garden of Eden; historical forts; state parks; and Kansas' newest natural attraction "Little Jerusalem."

The Pride of Kansas Building features more Kansas communities throughout the 10-day Fair! Stop by booths representing McPherson, Dodge City, Geary County and more. Also visit the Information Center near the Fair's Sergeant missile to learn more about Hutchinson and Reno County.



1 Wild West Country – Learn more about the hair-raising history of southwest Kansas communities. Among the attractions: Dodge City's wild west heritage, Greensburg tourism, Liberal's Pancake Day, Garden City attractions and Morton County's Cimarron National Grassland.

Dodge City Roundup – Beginning in 1977, this non-profit formed to promote western heritage through rodeos, horse shows, roping contests and related activities. It's also home to one of the nation's oldest and longest running Little Britches Rodeos. The booth will include hands-on activities like roping and touching.

From the Land of Kansas – The From the Land of Kansas is the state's trademark program designed to promote and celebrate Kansas businesses that grow, process, produce or manufacture in Kansas.

Western State Bank Expo Center – One of the newest facilities in southwest Kansas, Ford County's Western State Bank Expo Center hosts a wide range of events, including farm and ranch shows and business meetings. Learn more about the center's latest event: Sea Lion Splash.

Sedan – Located in the Flint and Chautauqua Hills, this area offers great hunting and fishing, plus scenic nature trails. It is also the birthplace of world famous Ringling Brothers Barnum and Bailey Circus clown Emmett Kelly. The booth will include information on the area's attractions, old-fashioned toys and staff dressed in period clothing.

LECOMPTON REENACTORS

BRINGING "BLEEDING KANSAS" TO LIFE

The reenactors, part of the Fair's Explore Kansas Weekend, will depict a 1850s town hall meeting, reflected the sentiments of that time regarding slavery in Kansas and the eventual vote settlers would take to determine if their new state constitution would allow or prohibit slavery.

The 30-minute performance is educational and entertaining and includes audience interaction. Join Gov. Charles Robinson and his wife Sara, radical Jim Lane, abolitionist John Brown, plus proslavery advocates and border roughians as they passionately express their feelings on the issue of slavery in Kansas.

Hours: Noon, 2 p.m., and 4 p.m. Sunday Sept. 8 at Hutchinson Regional Healthcare Systems' Lake Talbott Stage; and 11:30 a.m. Sept. 9 at Talbott Stage and 1 p.m. at Bretz and Young Injury Lawyers Arena.



4 Winfield Convention and Tourism – Winfield is known for music — and the annual Walnut Valley Festival, a bluegrass and acoustic event that occurs in September. Check out the music madness along with other attractions at the Winfield Convention and Tourism booth.

Smoky Hill Vineyards & Winery – The Salina-area winery began in 1991 when the founders hand-planted one acre of grapes. By 2009, the family-owned business had become the largest grape producing farm winery in Kansas.

Boot Hill Museum – The Dodge City museum preserves and interprets the history of the Old West through exhibits, education and entertainment reflective of the area's rich heritage. Booth activities include can-can lessons and Boot Hill gunfighters deputizing children.

Council Grove/Morris County Tourism – Historic Council Grove characters come to life, portraying the history of Council Grove and its upcoming 200th anniversary of the Santa Fe Trail. Also learn more about the area's abundant recreational opportunities.

Medicine Lodge – The Medicine Lodge Peace Treaty, signed in 1867 by the U.S. government and five southern plains tribes, has been reenacted here since 1927. The Peace Treaty Pow Wow is now an annual September event — keeping the Native American heritage alive. And don't miss the chance to learn about Barber County's scenic Gyp Hills.

FAIRLY POPULAR

1



1 PIG RACES

Watch the speed and agility — and yes, cuteness — of our famous racing pigs. And, what is not to like? Little piglets dressed in fetching racing silks run for the championship title and a coveted Oreo cookie. Pig-related puns come with the show. Some pig champions of past years include Sylvester Sta-loin, Kevin Bacon and Hamma Montana.

Hours/Location: Located by Bison Arena near Gate 5, races take place at noon, 2:30, 4 and 6 p.m. on Friday, Sept. 6; and 10 a.m., 2:30, 4 and 6 p.m. Saturday, Sept. 7 through Sunday, Sept. 15. The pig races are sponsored by Mattress Firm.

2



2 CAN'T BELIEVE IT'S BUTTER

We won't tell you what the Fair's 1,200 pounds of butter will be transformed into this year. Since 1983, the Fair's most anticipated tradition has always been a surprise. However, during the beginning of the Fair, fairgoers can watch Sarah Pratt and her husband, Andy, turn buckets of creamy butter into a work of art. A legend in the butter world, Sarah also is the butter sculptor at the Iowa State Fair, where she has created masterpieces including Iowa's "Field of Dreams," "Harry Potter," Neil Armstrong's walk on the moon and the Starship Enterprise.

Hours/Location: 8 a.m. to 8 p.m. in the Pride of Kansas Building. Sponsored by Southwest Dairy Farmers.

3



3 GREAT PUMPKIN

Pumpkins come in all shapes and sizes — but at the Kansas State Fair, it's all about the weight.

Hours/Location: 8 a.m. to 8 p.m. in the Pride of Kansas Building. Sponsored by Traeger Grills.

STATE FAIR MUSEUM

Not even a trip in Doc Brown's DeLorean (you know, the car from "Back to the Future") could show you all the history there is at the Kansas State Fair. Come learn more about the Fair's past at the Kansas State Fair Museum. This year's theme features the evolution of the Fair's historic structures. That includes the Bison Arena, a 1937 WPA project; the Grandstand, built in 1928; and the 1934-era Encampment, which besides 4-H youth over the years, served as a home to POWs during World War II.

Hours/Location: On the ground floor of the Lair White House at the corner of Cottonwood Ave. and Fort Leavenworth Boulevard. Open from 11 a.m. - 10 p.m. on Friday, Sept. 6; from 9 a.m. - 8 p.m. on Saturdays; 10 a.m. - 7 p.m. on Sundays and 10 a.m. - 7 p.m. Monday - Friday.

4 PETTING ZOO

Find some of your favorite animals at our petting zoo where exotic meets domestic. Fun for the whole family, this petting zoo allows fairgoers to interact with all their furry friends and even get the chance to feed them.

Hours/Location: Open daily, the petting zoo is free with gate admission.

ROVING ACTS



BANDALONI, THE ONE-MAN BAND

Back by popular demand is the one and only Bandaloni. This one-man band performs with bass and rhythm guitar, harmonica, kick drum, two high-hats, snare drum, cowbell and tambourine. And, he can sing. The magic doesn't end there as Bandaloni is also known for his great sense of humor, audience interaction and novelty guitar tricks.

Find him performing daily throughout the Fairgrounds.

CIRCUS PERFORMER

Jason D'Vaude (that's Vaude as in Vaudeville) is a self-taught one-man circus. The Kansas City entertainer brings his comedic juggling, fire and clowning show to Fair audiences, delighting them with his charming humor and distinct but refined awkwardness. Watch him juggle sharp items, climb up precariously balanced objects, ride an extra tall unicycle and manipulate fire like a master. Look to the sky or spot the flames to find this roaming act on the grounds.

THE STRONG MAN

The Kansas State Fair will have its own version of Superman.

Strongman John Beatty can bend steel, flip over cars and pull one-ton pickups. Beatty can also turn a horseshoe into a heart, lift 10 kids in the air at once and drive a nail with his hand. Beatty has performed at world strongman competitions and muscled his way to the quarterfinals on Season 5 of America's Got Talent.

Location: Grandstand Avenue/Fort Riley Boulevard intersection (by the fountain).



GOTTSCHALK PARK ENTERTAINMENT: FEARLESS FLORES THRILL SHOW

Your family will not believe all the dangerous acts the Flores family can do. Audiences' jaws will drop at the Globe of Death motorcycle-madness. They also will do acrobats on a sway pole from 50 feet in the air. The family's death-defying feats landed them a spot on America's Got Talent.

The Fearless Flores Thrill Show is sponsored by Hutchinson Clinic.

Hours/Location: 1:30 and 6 p.m. Friday, Sept. 6; and 11 a.m., 1:30 and 6:30 p.m. Sept. 7-Sept. 15 at Gottschalk Park.

5 CHAINSAW ARTIST

Gary Keenan's canvas is a log and his paintbrush is a chainsaw.

Buzz on over to watch Keenan take a blank section of timber and turn it into a work of art using his chainsaw. His wooden masterpieces — bears, birds, boots and other animals and objects — will be auctioned off at 4 p.m. Sept. 14 at Bretz and Young Injury Lawyers Arena.

Hours/Location: Located northwest of Lake Talbott, demonstrations take place at 11 a.m., 1 p.m., 3 p.m. and 5 p.m. Sponsored by Star Lumber and Leech Adhesives.

GIANT AQUARIUM

The State Fair provides an opportunity for patrons of all ages to learn more about Kansas fisheries and wildlife. Holding more than 3,200 gallons of water and weighing in at over 40,000 pounds, this Kansas Department of Wildlife, Parks and Tourism aquarium provides up-close views of many popular Kansas sport fish.

Hours/Location: Talk to a fisheries expert from 8 a.m. to 8 p.m. daily; located across from the Domestic Arts Building on Cottonwood Avenue.

RUB-A-DUB-DUB, WHAT'S-IN-THE-TUB AND GRAB-SOME-GRUB

Learn more about Kansas agriculture and where your food comes from by watching the Fair's grand champion livestock get a bath.

Fairgoers can ask the FFA members questions about feeding and caring for the animals while the youth bathe and feed the top sheep, cattle, goats and hogs. Called "Rub-a-Dub-Dub," there are several demonstrations each day.

Hours/Location: Located at the Agriculture Education Exhibits Building on 23rd Avenue near Gate 5. Demonstrations are at 9:30 and 11:30 a.m. and 6:30 p.m. Monday, Sept. 9 - Sunday Sept. 15. Watch feeding time at 2 p.m.



ANIMALS & EDUCATION



BIRTHING CENTER

Celebrating 25 years, the birthing center is one of the Fair's top attractions.

This one-of-a-kind agricultural education exhibit is the birthplace of calves, lambs, goats, chicks and piglets. Learn about the birthing process from Kansas State University veterinary students — plus gain insight about animal agriculture, food production, veterinary medicine and responsible pet ownership.

Hours/Location: 9 a.m. to 8 p.m. daily at 20th Avenue and Fort Scott Boulevard.

Get notified of live births through our new Kansas State Fair app. Available on iPhone and Android devices.



SUDSY'S BARN

New! After wandering through the Fair's livestock areas, stop at Sudsy's barnyard handwashing station that promotes healthy lifestyles and makes hand washing fun!

Hours/Location: 9 a.m. to 7 p.m. daily at the corner of 20th and Fort Riley Boulevard.

Brought to the Fair by Blue Cross Blue Shield of Kansas Foundation.

LEARN MORE

about the

FAIR'S FIELD TRIP PROGRAM

- ◆ Admission is \$3 a student
- ◆ One complimentary adult ticket is provided for every four student tickets ordered
- ◆ Teachers can register through Sept. 6

For more information contact Education Manager
Jacki Eckert (620)669-3607 | jacki.eckert@ks.gov



MOO U

Back by popular demand! Moo U Barn Tours are guided, 45-minute walks through the world of poultry, beef, dairy, sheep, swine and rabbits. Learn interesting and little-known facts about livestock, such as the many ways animal by-products are used in everyday life.

Hours/Location: 9 a.m., 10 a.m., 11 a.m., noon, 2 p.m., 3 p.m., 4 p.m., 5 p.m. and 6 p.m. daily at the northwest corner of the Fair's Livestock Annex on 20th Avenue.

Sponsored by
Kansas Farm Bureau.



EDUCATION CENTER

New! With more than 12,000 students visiting Kansas' Largest Classroom each year, the Fair is expanding its education initiative — creating a learning hub in the middle of the Fairgrounds. Previously called Do-Art, the new Education Center features a variety of activities, including lessons on the importance of pollinators and the growing Kansas dairy industry. Kansas CosmoSphere's Dr. Goddard's Lab can be found here.

Hours/Location: 8 a.m. to 8 p.m. daily at the intersection of Bison Boulevard and Lake Talbott Avenue.

Sponsored by Kansas Farm Bureau.



BUTTERFLY EXPERIENCE

Visit an enclosed butterfly garden and feed the hundreds of butterflies fluttering around — all while learning more about the butterfly lifecycle and habitat.

Hours/Location: 9 a.m. to 9 p.m. daily, east of Lake Talbott.



Educator's Guide: Find a complete listing of the Fair's educational opportunities at KansasStateFair.com



POLLINATOR GARDENS

What might appear to be just pretty flower gardens is really an attempt to keep the Earth in balance. Several new pollinator garden plots have been planted across the Fairgrounds this year. These gardens are full of native Kansas wildflowers and grasses, attracting butterflies, bees and even bats. With habitat destruction causing declines in monarch butterflies and other pollinating species, the pollinator gardens are part of the Fair's educational curriculum.

Sponsored by Pheasants Forever and Quail Forever and Kansas Farm Bureau.

MILKING PARLOR

Witness firsthand how milk makes its way from the farm to your home. Kansas dairy professionals talk about the milking process and answer questions.

Hours/Location:

Demonstrations are at the top of the hour from 10 a.m. through 2 p.m. and at 6 p.m. Located on 20th Avenue between the Dairy Tie Barn and Prairie Pavilion.

Sponsored by Southwest Dairy Farmers.



CELEBRATING KANSAS TALENT

Keeping with our focus of "Celebrating All Things Kansas," this year's free stage lineup includes many Kansas performers. Check out these Kansans - plus many others.



Chris Housman — Hodgeman County native Housman taught himself to play the fiddle at age 7. Singing followed, and he eventually moved to Nashville where he has been writing and performing. Performances: Noon, Sept. 7, Hutchinson Regional Healthcare System Stage at Lake Talbott; and 1 p.m. Sept. 7, Bretz and Young Injury Lawyers Arena.



Fourte — Hailing from Sterling, this group performs theatrical Broadway show tunes. Performances: 5 p.m. and 7 p.m. Sept. 6 and 6 p.m. Sept. 9, Hutchinson Regional Healthcare System Stage at Lake Talbott; Noon, Sept. 7 and 6 p.m. Sept. 8, Bretz and Young Injury Lawyers Arena.

Margot Kimble — Kimble is a folk singer who recently moved back to her hometown of Hutchinson after living several years in Hawaii. Performances: 1 p.m. and 5 p.m. Sept. 9 and Sept. 12 at Hutchinson Regional Healthcare System Stage at Lake Talbott.



Damaris Kunkler — Kunkler, of Iola, took first place in March at a singer/songwriter competition in Lawrence. Her self-published CD, "Come Sit By My Fire," consists of tunes and ballads she's written over the past 20 years. Performances: 11 a.m. Sept. 13 at Hutchinson Regional Healthcare System Stage at Lake Talbott; and 4 p.m. Sept. 13 at Bretz and Young Injury Lawyers Arena.

Mariachi Los Reyes — This Wichita-based mariachi family has played throughout the state for over 30 years. Performances: 6 and 7 p.m. Friday, Sept. 13, Hutchinson Regional Healthcare System Stage at Lake Talbott.

Glenda & Mike's Magic and Ventriloquism Show — The longtime Fair entertainers from Hutchinson are back again to delight young and old alike. Performances: 10 a.m. daily at Hutchinson Regional Healthcare System Stage at Lake Talbott.

THE ULTIMATE SPORTS SHOP

002 LAKE TALBOTT TERRACE BY GATE 3

50% OFF ENTIRE BOOTH

MENTION THIS ADD & RECEIVE ANOTHER **10% OFF**

NFL, NBA, NCAA, NHL, NASCAR, MLB



HUTCHINSON
REGIONAL HEALTHCARE SYSTEM
STAGE AT LAKE TALBOTT

New:

Our Lake Talbott stage has a new sponsor and new amenities!

Hutchinson Regional Healthcare System is the new stage sponsor. Charlie's Place is now located at Lake Talbott. The establishment, complete with seating, will serve beverages, including "State Fair Beer" brewed by Salt City Beverage of Hutchinson.

Kansas Secretary of State's Office

At the Kansas Secretary of State's Office you can:

- // **Register to Vote**
- // **Register and Maintain a Business**
- // **Become a Notary Public**
- // **Purchase Kansas Flags and Legal Publications**
- // **and more**

Stop and visit us in the **Meadowlark Building** during the State Fair or at our office in Topeka.

Scott Schwab
Kansas Secretary of State
1st Floor, Memorial Hall
120 SW 10th Ave.
Topeka, KS 66612

785-296-4564
kssos@ks.gov
sos.kansas.gov
@KansasSOS





Switch to Sprint!

We'll make it easy for you!

**Visit us in the Meadowlark Building,
Booths #73 & #74**



FREE TESTING
*of alternators,
batteries & starters.*



CHECK ENGINE
*FREE check engine
light testing.*



WIPER BLADES
*FREE wiper blade
installation. Applies
to most vehicles.*



FREE RECYCLING
*of oil, oil filters, gear
oil, transmission
fluid & batteries.*



WE LOAN TOOLS
*Borrow the specialty
tool you need to
get the job done.*

Just Around The Corner... All Across The Nation.

**With over 5,300 O'Reilly Auto Parts stores in 47 states,
we're never far from home.**

OReillyAuto.com



FRIDAY, SEPT. 13

Ag Innovation Day

See all the latest and greatest in agriculture. Activities include a lineup of Kansas agriculture companies presenting at the Pride of Kansas Stage in the Pride of Kansas Building. Machinery and other new technology will be on display at the Administration Building Parking Lot.

- All Day** Construction Careers Alliance for Kansas, Ad Astra Building
- 9 a.m. to 1 p.m.** High Voltage Safety Demonstrations, Ad Astra Building. Sponsored by Kansas Electric Cooperatives
- 10 a.m. to 3 p.m.** Crochet and Knitting Day, Domestic Arts
- Noon** Comic Hypnotist Ron Diamond, Bretz and Young Injury Lawyers Arena. Sponsored by Kuhn-Krause
- 3 p.m.** Comic Hypnotist Ron Diamond, Bretz and Young Injury Lawyers Arena. Sponsored by Kuhn-Krause
- 3 p.m.** Celebrity Goat Milking, Sheep, Swine, Goat Barn
- 7:30 p.m.** Lauren Alaina with special guest Mitchell Tenpenny, Nex-Tech Wireless Grandstand
- 7:30 p.m.** Comic Hypnotist Ron Diamond, Bretz and Young Injury Lawyers Arena. Sponsored by Kuhn-Krause

SATURDAY, SEPT. 14

Arts and Culture Day

Sponsored by Blue Cross Blue Shield of Kansas



**BlueCross
BlueShield
of Kansas**

An independent licensee of the Blue Cross Blue Shield Association.

Learn more about Kansas arts and culture. Check out the demonstrations on the Pride of Kansas Stage.

- All Day** Construction Careers Alliance for Kansas, Ad Astra Building
- 10 a.m. to 4 p.m.** Roy Coffey Antique Farm Machinery Show, Administration Building Parking Lot
- 3 p.m.** Woodcarvers Auction, Bretz and Young Injury Lawyers Arena
- 1-3 p.m. & 4-6 p.m.** Warpaint, the Kansas City Chiefs horse, with rider Susie Derouche. Location TBA.
- 2 p.m.** Comic Hypnotist Ron Diamond, Bretz and Young Injury Lawyers Arena. Sponsored by Kuhn-Krause
- 6:30 p.m.** Supreme Drive, Prairie Pavilion
- 7 p.m.** Comic Hypnotist Ron Diamond, Bretz and Young Injury Lawyers Arena. Sponsored by Kuhn-Krause
- 7:30 p.m.** Hanson, Nex-Tech Wireless Grandstand

SUNDAY, SEPT. 15

Outdoor Kansas

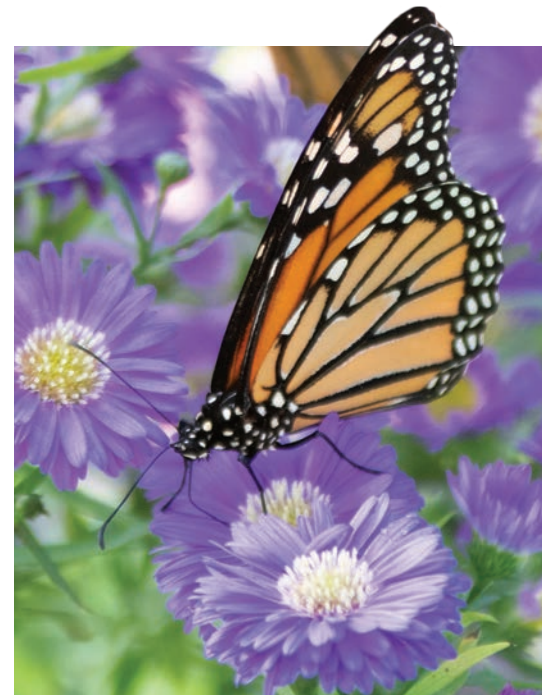
Sponsored by Enel Green Power North America



All good things must come to an end, but do not mourn the last day of the Fair. Make the most of it by exploring the Fair's Outdoor Kansas Day. Experience the educational exhibits featuring archery, gun safety, fishing and other activities. Visit our pollinator gardens located throughout the Fairgrounds and stop by the Kansas Department of Wildlife, Parks and Tourism booth and aquarium across from Domestic Arts.

- All Day** Construction Careers Alliance for Kansas, Ad Astra Building
- 10 a.m.** Antique Tractor Pull, Bison Arena. Sponsored by O'Reilly Auto Parts

- 10 a.m.** First Church of the Nazarene morning church service, Bretz and Young Injury Lawyers Arena
- Noon** Pronto Pup Eating Contest, Hutchinson Regional Healthcare System Stage at Lake Talbott. Sponsored by D&J Pronto Pup
- Noon to 3 p.m.** High School Dance Showcase, Bretz and Young Injury Lawyers Arena
- 3 p.m.** All Star Monster Trucks, Nex-Tech Wireless Grandstand
- 3 p.m.** Comic Hypnotist Ron Diamond, Bretz and Young Injury Lawyers Arena. Sponsored by Kuhn-Krause
- 5 p.m.** Comic Hypnotist Ron Diamond, Bretz and Young Injury Lawyers Arena. Sponsored by Kuhn-Krause



BROWSE THROUGH THE KANSAS STATE FAIR EXHIBITS

From agricultural equipment and cattle chutes to hot tubs, mattresses, jewelry and more things than you can shake a stick at, come see our approximately 600 exhibitors in our buildings and across the Fairgrounds.

Check out Meadowlark, Sunflower Complex, Nex-Tech Wireless Grandstand, Pride of Kansas and Eisenhower buildings.

Fun Fact:

About 85 percent of the vendors on our Fairgrounds are from Kansas!



**Our heart is in the
communities where
we live and serve.**



**RCB
BANK**

That's my bank!

Member FDIC

**19 locations
in KS.**



Visit us in:

**Ark City, Winfield, Oxford, Wellington,
Douglass, Hutchinson, Wichita and Lawrence**

855.BANK.RCB | RCBbank.com