



## *Sales Kit*

### OVERVIEW

Convention Center Layout  
Function Space Details  
Capacity Chart

### GETTING HERE

Local Directions  
Parking & Loading

### CONTACT INFORMATION



MISSISSIPPI COAST COLISEUM & CONVENTION CENTER | [WWW.MSCOASTCONVENTIONCENTER.COM](http://WWW.MSCOASTCONVENTIONCENTER.COM)  
2350 Beach Boulevard | Biloxi, MS 39531 | Phone 228-594-3700



The Mississippi Coast Convention Center is fully equipped with all your convention, conference or meeting needs for a successful event! Centrally located in Biloxi, the 400,000-square-foot facility accommodates groups of up to 5,000 people. This state-of-the-art convention center offers all the modern amenities meeting planners' desire. Perfect for large conferences or intimate events, it is ideally located facing the Gulf of Mexico within walking distance of the beach.

Offering locally exciting casinos, championship golf, local seafood, excellent entertainment, great shopping, southern hospitality, and miles of sand beaches, the Mississippi Gulf Coast has MORE!

Looking for a fresh, spacious place to host your next convention, conference or meeting? Look no further than the Mississippi Coast Convention Center, the premiere destination for exhibitors, meeting planners and beyond.

# Overview



## HALL A

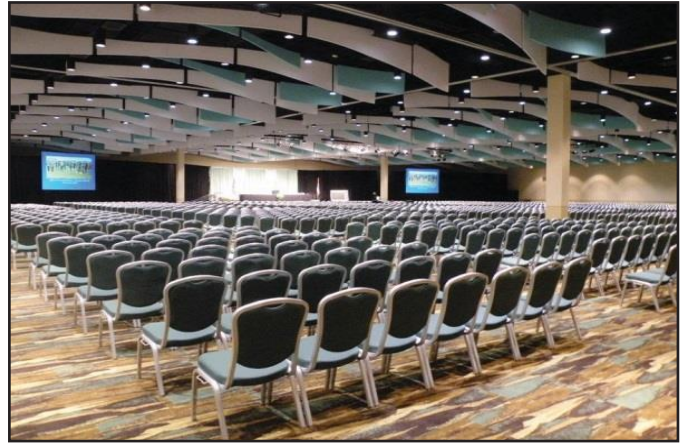
- ◆ 36,354 square feet
- ◆ Seven Individual Meeting Rooms
- ◆ More than 12 room configurations devisable with Hufcor sound proof, movable walls covered with a Ver-elli fabric – one of the toughest man-made materials manufactured.
- ◆ 19' ceilings with Transformat acoustical panels –the only one of its size in the nation
- ◆ Fully carpeted with Axminster
- ◆ Individually controlled light panels in each room
- ◆ Ceiling spotlights
- ◆ 9' teak entrance doors
- ◆ State-of-the-Art Turbo Sound System /wireless access points
- ◆ Can combine with Halls B/C/D
- ◆ Restrooms located adjacent to Hall
- ◆ Built-in coat check desk





## HALL B

- ◆ 24,364 square feet
- ◆ Six individual meetingrooms
- ◆ More than 10 room configurations devisable with soundproof, movable walls covered with a Verelli fabric.
- ◆ 19' ceilings with Transformit acoustical panels–the only one of its size in the nation
- ◆ Fully carpeted with Axminster
- ◆ Individually controlled light panels in each room
- ◆ Large rollup loading door on Southside
- ◆ 12'x8' Roll up door for easy load-in with 9' teak entrance doors
- ◆ State-of-the-Art Turbo sound system/ wireless access points
- ◆ Restrooms located insideHall
- ◆ Can combine with HallsA/C/D



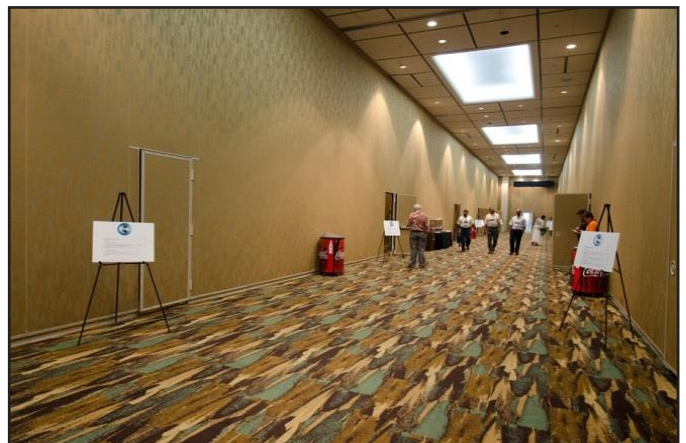
## HALL C

- ◆ 22,203 square feet
- ◆ Four individual meetingrooms
- ◆ Seven room configurations devisable with sound proof, movable walls covered with a Verelli fabric
- ◆ Can combine with HallsA/B/D
- ◆ 19' ceilings
- ◆ Fully carpeted with Axminster
- ◆ Floor boxes with power throughout room.
- ◆ Individually controlled light panels in each room
- ◆ 8'x16' opening for easy load-in
- ◆ 9' teak entrance doors
- ◆ State of the Art Turbo Sound System/ wireless access points



## HALL D

- ◆ 27,888 square feet
- ◆ Twelve individual meetingrooms
- ◆ Over 60 different room configurations devisable with sound proof, movable walls covered with a Verellifabric.
- ◆ Can combine with Halls B/C/D
- ◆ Large hallway for support space
- ◆ 19' recessed ceilings with chandeliers
- ◆ Fully carpeted with Axminster
- ◆ Individually controlled light panels in each room
- ◆ State-of-the-Art Turbo Sound System /wireless access points
- ◆ Ceiling spotlights
- ◆ Restrooms insideroom



## EAST LOBBY

- ◆ 13,200 square feet
- ◆ Built in coat check or ticket counter
- ◆ 54' ceiling height -Rulon product to look like boardwalk
- ◆ Side Parking Lot for 40 vehicles
- ◆ Terrazzo floors with Mother of Pearl Fleck patterns
- ◆ 40'x40' teak wall / 9' teak entrance doors
- ◆ Restrooms



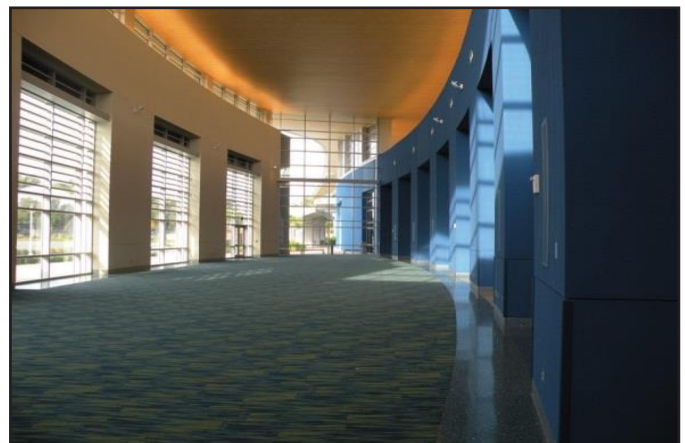
## CENTRAL LOBBY

- ◆ 12,300 square feet
- ◆ Location of East Café featuring the Chef's special along with grilled favorites.
- ◆ 22' ceiling height
- ◆ Large load-in door on North wall
- ◆ Terrazzo floors with Mother of Pearl Fleck patterns
- ◆ Restrooms



## WEST LOBBY

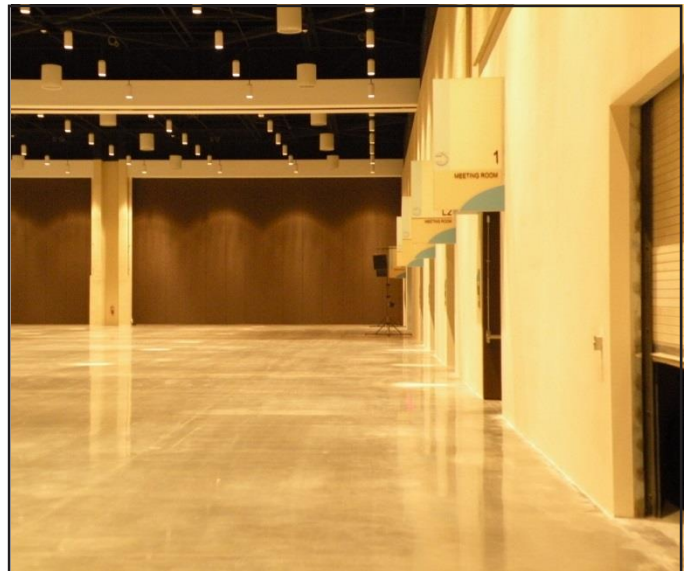
- ◆ 19,800 square feet
- ◆ Location of Pelican Café with seating for 80, featuring the Chef's specials along with grilled favorites
- ◆ 54' ceiling height –Rulon product to look like boardwalk
- ◆ Terrazzo floors with Mother of Pearl Fleck patterns
- ◆ 4.5mm Video Board welcoming your event
- ◆ Restrooms
- ◆ 7 ½ ft clock on GPS guaranteed not to lose 3 seconds in five years
- ◆ Seven lobby meeting rooms which open onto the show floor with 9' teak doors
- ◆ Location of Niche –wired to handle large registrations and receptions
- ◆ Carpeted Facility -4,840 square feet





## EXHIBIT HALL

- ◆ 133,332 square feet
- ◆ 35' ceiling height to bottom of steel grid 42' to roof
- ◆ Diamond cut polished concrete floors
- ◆ Two halls of 44,526 square feet and two halls with 22,140 square feet each
- ◆ State of the Art Turbo Sound System/ wireless access points
- ◆ Restrooms in each hall
- ◆ Show Managers Offices in each hall
- ◆ Seven Meeting rooms opening to the West Lobby
- ◆ 20'x40' roll up door –one of the largest doors in any Convention Center
- ◆ Five additional roll up loading doors
- ◆ Twelve depressed loading docks
- ◆ Two large drive up ramps
- ◆ Fully lit, covered loading dock
- ◆ Storage area for drayage
- ◆ Hot water easily accessible
- ◆ Water drainage in each pocket
- ◆ Satellite kitchen available to rent
- ◆ Wireless access points throughout facility
- ◆ 12 - 400 amp service disconnects (located on columns) plus one additional on West wall
- ◆ 126 Floor boxes –each containing
  - 1-100 amp pin and sleeve connector
  - 6- 20 amp 120 volt outlets
  - 2-30 amp 3 phase outlets
  - 25 Telephone hookups and 4 network connections in each box



# MISSISSIPPI COAST CONVENTION CENTER

## SEATING CAPACITY

Seating based on maximum set up with reasonable head table size

SPACE	DIMENSION	SQ.	THEATER	CLASSROOM	BANQUET	10 X 10 BOOTHS
<b>HALL A</b>	<b>222'x174'x20'</b>	<b>36,354</b>	<b>4,500</b>	<b>2,300</b>	<b>2,200</b>	<b>170</b>
A-2	71'x33'x20'	2,331	180	110	150	10
A-3	71'x39'x20'	2,778	270	200	150	12
A-4	71'x35'x20'	2,438	180	110	150	10
A-5	57'x34'x20'	1,931	200	120	120	12
A-6	57'x32'x20'	1,830	200	120	120	12
A-7	151'x32'x20'	4,812	650	224	380	20
A-8	143'x142'x20'	20,234	2,400	1,300	1,200	98
<b>HALL B</b>	<b>245'x102'x20'</b>	<b>24,364</b>	<b>3,000</b>	<b>1,700</b>	<b>1,500</b>	<b>138</b>
B-1	32'x99'x20'	2,840	180	128	140	16
B-2	70'x26'x20'	1,845	180	100	100	10
B-3	70'x40'x20'	2,832	252	176	150	10
B-4	70'x35'x20'	2,386	275	130	140	10
B-5	75'x102'x20'	7,583	800	576	420	40
B-6	68'x102'x20'	6,873	800	504	410	32
<b>HALL C</b>	<b>212'x108'x20'</b>	<b>22,023</b>	<b>2,400</b>	<b>1,200</b>	<b>1,300</b>	<b>84</b>
C-1	68'x108'x20'	7,134	800	500	380	32
C-2	103'x108'x20'	10,968	1,200	700	600	50
C-3	40'x25'x20'	1,000	70	60	48	n/a
C-4	40'x47'x20'	1,699	140	100	120	8
<b>HALL D</b>	<b>200'x141'x20'</b>	<b>27,888</b>	<b>3,100</b>	<b>1,700</b>	<b>1,600</b>	<b>156</b>
D-1	32'x60'x20'	1,937	200	100	120	10
D-2	35'x60'x20'	2,121	220	100	120	10
D-3	32'x60'x20'	1,918	200	100	120	10
D-4	35'x60'x20'	2,107	220	100	120	10
D-5	35'x60'x20'	2,107	220	100	120	10
D-6	30'x60'x20'	1,769	175	100	100	10
D-7	29'x60'x20'	1,757	175	100	100	10
D-8	35'x60'x20'	2,116	220	100	120	10
D-9	35'x60'x20'	2,115	220	100	120	10
D-10	32'x60'x20'	1,922	200	100	120	10
D-11	35'x60'x20'	2,115	220	100	120	10
D-12	32'x60'x20'	1,891	200	100	120	10
D HALLWAY	200'x20'x20'	4,000	n/a	n/a	n/a	20
<b>Exhibit Hall</b>	<b>246'x541'x30'</b>	<b>133,332</b>	<b>n/a</b>	<b>n/a</b>	<b>n/a</b>	<b>650</b>
E-1	246'x181'x30'	44,526	4,700	2,500	2,380	200
E-2	246'x90'x30'	22,140	2,300	1,300	1,080	80
E-3	246'x90'x30'	22,140	2,300	1,300	1,080	80
E-4	246'x181'x30'	44,526	4,700	2,500	2,380	200
<b>Lobby Rooms</b>						
L-1	45'x35'x12'	1,508	140	84	90	n/a
L-2	45'x30'x12'	1,317	112	84	60	n/a
L-3	45'x30'x12'	1,317	112	84	60	n/a
L-4	45'x26'x12'	1,131	100	40	60	n/a
L-5	43'x28'x12'	1,151	100	40	60	n/a
L-6	43'x31'x12'	1,279	110	52	60	n/a
L-7	43'x55'x12'	2,138	200	96		n/a
<b>Lobbies/Concourses</b>						
West Lobby	45'x380'x28'	17,100	n/a	n/a	n/a	TBA
Central Lobby	51'x247'x28'	11,044	n/a	n/a	n/a	TBA
East Lobby	51'x174'x28'	8,874	n/a	n/a	n/a	TBA
The Niche	41'x133'x28'	5,453	500	n/a	250	TBA
South Arcade Lobby		9,184	n/a	n/a	n/a	TBA

# Getting Here

The Mississippi Coast Coliseum & Convention Center is conveniently located at 2350 Beach Blvd., Biloxi, MS 39531 - Minutes away from Downtown Biloxi and Downtown Gulfport, the Mississippi Coast Coliseum & Convention Center is surrounded by a number of hotels, dining, shopping, and entertainment options.

## TRAVELING WEST

### ♦ Traveling west on I-10

1. Take the MS-15 N/MS-67 N exit, EXIT 46B-A, toward I-110 S/Biloxi/Keesler A.F.B.
2. Merge onto MS-15 S via EXIT 46A on the left toward Biloxi/Keesler A.F.B.
3. MS-15 S becomes I-110 S
4. Merge onto Beach Blvd/US-90 W via EXIT 1B on the left toward Keesler A.F.B.
5. Travel 5.2 miles
6. The Mississippi Coast Coliseum is on your right

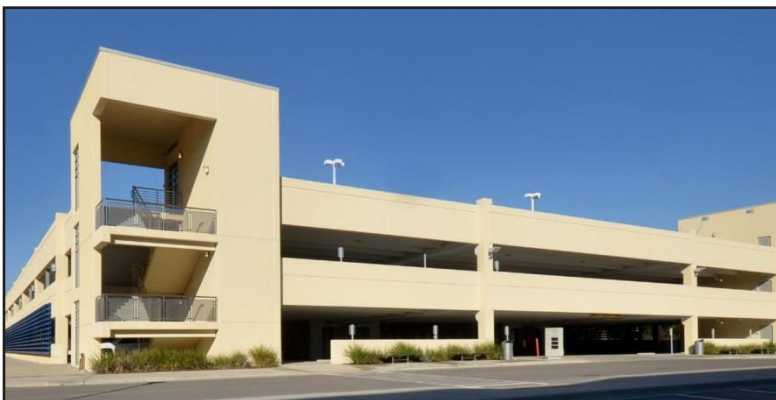
## TRAVELING EAST

### ♦ Traveling east on I-10

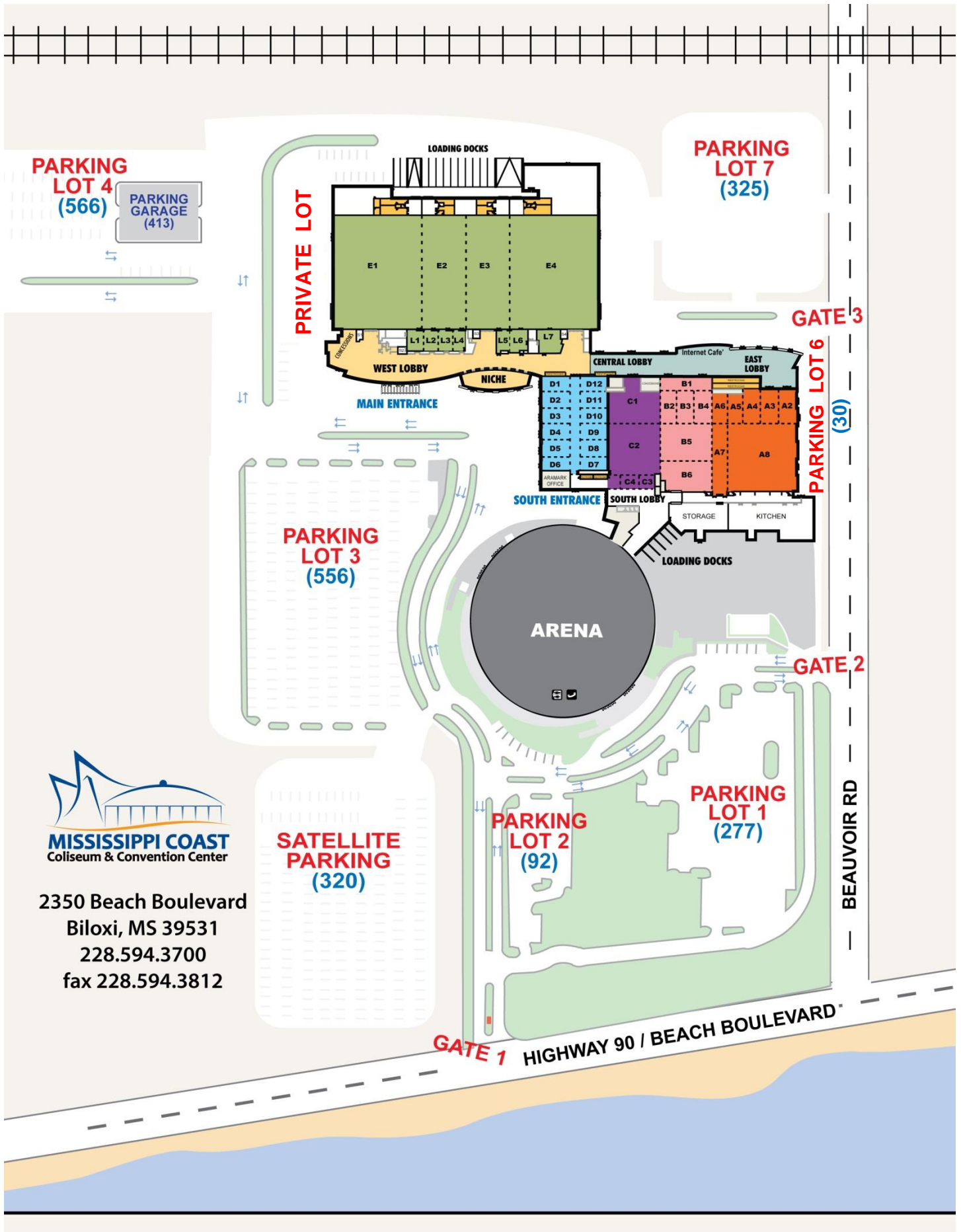
1. Merge onto MS-605 south via EXIT 38 toward Gulfport/Cowan Road.
2. Turn left onto W Beach Blvd/US-90 E.
3. Continue to follow US-90 E.
4. Travel 3.3 miles
5. The Mississippi Coast Coliseum is on the left

## PARKING & LOADING

- ♦ Over 3,000 parking spaces
- ♦ Detached parking garage
- ♦ Easy access to all Convention Center areas
- ♦ Four (4) covered depressed loading docks with access to the South Lobby
- ♦ Twelve (12) covered depressed loading docks on the north side for direct access to the exhibit halls.
- ♦ 40'x37' Loading door on east side of exhibit hall







2350 Beach Boulevard  
Biloxi, MS 39531  
228.594.3700  
fax 228.594.3812



## Contact Information

### ADMINISTRATIVE OFFICE

2350 Beach Boulevard  
Biloxi, Mississippi 39531  
228-594-3700  
800-726-2781  
228-594-3812 (fax)

### WEBSITE(S)

[www.mscoastconventioncenter.com](http://www.mscoastconventioncenter.com)  
[www.mscoastcoliseum.com](http://www.mscoastcoliseum.com)  
  
[www.facebook.com/mscoastcoliseum](https://www.facebook.com/mscoastcoliseum)  
[www.twitter.com/mscoastcoliseum](https://www.twitter.com/mscoastcoliseum)  
[www.instagram.com/mscoastcoliseum](https://www.instagram.com/mscoastcoliseum)  
[www.youtube.com/mscoastcoliseum](https://www.youtube.com/mscoastcoliseum)

### CONVENTION CENTER SALES STAFF

#### MATT MCDONNELL

Executive Director  
[mcd@mscoastcoliseum.com](mailto:mcd@mscoastcoliseum.com)  
228-594-3711

#### GLORIA FREY

Director of Convention Sales  
[gfrey@mscoastconventioncenter.com](mailto:gfrey@mscoastconventioncenter.com)  
228-594-3719

#### PENNY QUAVE

Senior Sales Manager  
[pquave@mscoastconventioncenter.com](mailto:pquave@mscoastconventioncenter.com)  
228-594-3736

#### PAM DIAZ

Sales Manager  
[pdiaz@mscoastconventioncenter.com](mailto:pdiaz@mscoastconventioncenter.com)  
228-594-3750

#### LISA EVANS

Event Coordinator  
[levans@mscoastconventioncenter.com](mailto:levans@mscoastconventioncenter.com)  
228-594-3754