



ONE HUNDRED FORTY NINETH

# NEBRASKA STATE FAIR

August 24 – September 3, 2018

**Grand Island, NE**

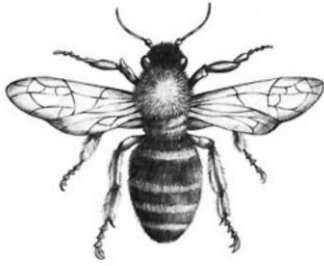
## **Bee Culture Department**

Nebraska State Fair Board

Chris Kircher, Chair – Omaha  
Kirk Shane – Vice Chair - Atkinson  
Harry Hoch – Treasurer - Grand Island  
Chuck Rolf - Secretary- Albion

Stan Brodine - Kearney  
Bob Haag – Indianola  
Denny Hoffman - Thedford  
Jeff Kliment - Valparaiso  
Kathleen Lodi - Lincoln  
Doug Lukassen – Kimball  
Beth Smith - Lincoln  
Steve Wehrbein - Plattsmouth  
Kent Zeller – Ravenna

Lori Cox, Executive Director – Grand Island



## Join the Bee Culture Department in celebrating a "Harvest of Memories" at the 2018 Nebraska State Fair

The Bee Culture exhibits are displayed along with other domestic open class exhibits in the Fonner Park Concourse which is adjacent to the east side of the Heartland Event Center. The Bee Culture Department is located in about the middle of the Concourse.

The most efficient way to enter your exhibits is online. Instructions on how to enter online are found on the web site, [www.statefair.org](http://www.statefair.org). For directions on entering by mail or in-person go to the entry information section in this book.

Need help in getting your entries to and from the fair? See [Domestic Drop-Off/Return Sites](#) and [Domestic Shipping Options](#) for information.

Contact Brian Nilson, Bee Culture Superintendent with questions at 402-617-2936 or email: [bnilson@msn.com](mailto:bnilson@msn.com).

### Bee Culture Entry Book Index

Page 3	Important Dates, Department Divisions and Awards
Pages 3 - 4	Department Rules
Pages 4 -5	How to Enter, Deliver and Return Exhibits -
Pages 5-6	Open Class Divisions 2401-2408
Page 6	Open Class Overall Awards
Pages 6 - 7	Youth Class Divisions 2409-2413
Page 7	Youth Overall Awards
Page 7-8	Judging Standards for Apiary Products

**Brian Nilson**  
**NSF Bee Culture Department Superintendent**

# BEE CULTURE DEPARTMENT

**Superintendent: Brian Nilson**

402-617-2936 - mobile phone

bpnilson@msn.com

**Nebraska State Fair (NSF)**

[www.statefair.org](http://www.statefair.org)

**Judges:** **Dr. Judy Wu-Smart**, Extension & Research Entomologist, University of Nebraska-Lincoln  
**Dr. Matthew Smart**, Wildlife Biologist, USGS Northern Prairie Wildlife Research Center

**Assistant Judge: Dustin Scholl**, Nebraska Beekeepers Association

## Important Dates

Entry Deadline: Wed, Aug 22, 9 pm  
Drop-Off Day: Sunday, Aug 12 (Seward noon to 5 pm; North Platte noon to 3 pm)  
Exhibit Delivery: Mon and Tue, Aug 20-21 from 1 pm to 8 pm and Wed, Aug 22 from 9 am to 9 pm  
Judging Day: Friday, Aug 24 starting at 8 am  
Exhibit Release: Mon, Sep 3 from 8 to 10 pm and Tue, Sep 4 from 8 am to noon - no early release  
\*Association exhibits must be in place by Fri, Aug 24, 8 am. Make arrangements with the Education Superintendent if you want to place an exhibit in that area.

## Bee Culture Department Divisions

- Divisions 2401 through 2408 contains classes open to any age including youth
- Divisions 2409 through 2413 contains classes open only to youth (18 yrs and under by Jan 1)

## Bee Culture Premiums and Overall Awards

The Nebraska Beekeepers Association provides the following premiums for all divisions of the Bee Culture Department:

1st place	Blue	\$15
2nd place	Red	\$12
3rd place	White	\$8
4th place	Pink	\$5

In addition, there are 6 overall awards for **Open Class Divisions 2401-2408** (total value of \$325) and 8 overall awards for **Youth Divisions 2409-2413** (total value of \$325) provided by The Nebraska Beekeepers Association and various private donors. See end of the Open Class Divisions and Youth Divisions for details.

Included in the overall awards are two sweepstake awards, one for **Open Class Divisions 2401-2408** and one for **Youth Divisions 2409-2413** plus entries made by youth (18 and under by Jan 1) in open class divisions where there are no corresponding youth division classes. The sweepstake awards are based on total points accumulated from entries in the specified divisions as follows:

- 1<sup>st</sup> place – 5 points
- 2<sup>nd</sup> place – 4 points
- 3<sup>rd</sup> place – 3 points
- 4<sup>th</sup> place – 2 points

Judging results will be available at [www.statefair.org](http://www.statefair.org). Select “Get Involved”, then “Open Class Domestic Exhibits & Results”.

## Bee Culture Department Rules

It's the Exhibitor's responsibility to be familiar with the [General Rules and Regulations](#) linked here which apply to all Nebraska State Fair open class domestic departments and to the specific rules for each department.

## Additional Rules Specific to the Bee Culture

The exhibitor or his/her authorized agent must have produced all entries in this competition in Nebraska.

- Only one entry will be allowed per exhibitor in any one class.
- Entries shall bear no labels or markings.
- Judges will use scorecards in judging. Points will be deducted for entries less than the specified amounts.
- The judge may but is not required to award a ribbon for the first four places in each class.
- Entries received later than the delivery deadline of Aug 23 at 9 pm will be labeled as "For Display Only".
- Exhibitor's age as of Jan 1 is used for age-restricted classes. The birthdate is required on the entry form.
- **No early release of entries.**

## How to Enter Exhibits – Entry deadline is Wed, Aug 22, 9 pm

*If you wish to purchase exhibitor tickets you must do so when you enter your exhibits online or on the Bee Culture Entry Form. Purchase of these tickets is optional. Note that gate admission is less than exhibitor ticket admission on some days of the Fair. Check [www.statefair.org](http://www.statefair.org) Guest Info/Admission Pricing for details.*

**Online Registration:** The most time and cost efficient way to enter is online. Exhibitors can enter all their open class exhibits and order exhibitor tickets (optional) in one session. Online entry instructions are found on the web site, [www.statefair.org](http://www.statefair.org). Select "Get Involved", then "Open Class Domestic Exhibits & Results" and then click on "Online Entry."

**Mail-In or In-Person Registration:** When using mail-in or in-person registration, the exhibitor must use a separate form for each department entered. Either print the entry form from the following hyperlink: [2018 Bee Culture Entry Form](#) or request form from the NSF Office, 501 E Fonner Park Rd Ste 200, Grand Island NE 68801; phone: 308-382-1620.

Entry forms may be mailed, faxed or delivered such that they arrive at the Nebraska State Fair by the Aug 23, 9 pm deadline.

- Mailing address: Nebraska State Fair Office, PO Box 1387, Grand Island NE, 68802-1387
- Fax: 308-384-1555
- Hand delivery address: NSF Office, 501 E Fonner Park Rd Ste 200, Grand Island NE

## Guidelines For Completing Entry Form – Online & Mail in or Delivery

- Enter all items that you plan to bring. There is no entry fee. Items not brought will be deleted at the Fair.
- The entry form description is for identification purposes only. It must not exceed 40 characters in length (letters and spaces) and should provide identifying size and subject to help locate the item by sight. The class name, class number and title of item should not be part of the entry description.
- Retain a copy of the entry form. A copy is required with each package mailed/shipped to Grand Island or delivered to a drop-off site. For online registration, print either the entry receipt activity report or a packing/loading report.

---

## Deliver Exhibits to Fonner Park Concourse – Deadline is Wed, Aug 22, 9 pm

Entries can be: (1) delivered in person, (2) taken to a drop-off / return site, or (3) sent by USPS, FedEx or UPS

- **In-Person:** bring exhibit(s), along with a copy of the entry form, to the Bee Culture area which is roughly in the middle of the Concourse. Receiving times are Mon and Tue, Aug 20-21 from 1 pm to 8 pm and Wed, Aug 22 from 9 am to 9 pm.
- **Drop-off/Return Site:** There will be two drop-off/return sites (one in North Platte and one in Seward) to facilitate transportation of exhibits to and from Grand Island. Refer to [Domestic Drop-Off / Return Sites](#) document for detailed instructions on packaging, location and time. Package items going to different departments separately.
- **Ship by USPS, UPS or FedEx:** Refer to the [Domestic Shipping Options](#) for detailed instructions on packaging, where to send exhibits and how to pay for return costs. Note that items sent by mail (USPS) must use the PO Box address and those sent a delivery service (UPS or FedEx) must use the street address. Shipment must arrive not later than the Aug 22, 9 pm deadline.

## Return of Exhibits --- No Early Release

Options for the return of exhibits are:

- **In-Person:** Items can be picked up Mon, Sep3, from 8 to 10 pm or Tue, Sep 4, from 8 am to noon. You will be asked to sign the release list to collect your entries. If you sent your exhibits by mail, shipping service or drop-off but wish to pick them up in person at the end of the fair, you can do so.

- **Drop-Off/Return Sites:** Refer to the [Domestic Drop-Off/Return Sites](#) for return information.
- **Shipping:** Exhibitors who want items returned by mail or a delivery service must make this notation on the entry form enclosed with exhibits. Exhibits will not be accepted or returned by COD. Refer to [Domestic Shipping Options](#) for return information.

*Exhibits not picked up during release time or with insufficient payment for return shipment must be picked up from the NSF Office, 501 E Fonner Park Rd, Ste 200, Grand Island by Wed, Oct 3. After that, items will be donated to charity.*

## Bee Culture Department - Divisions 2401-2408

### Open Class Divisions

#### DIVISION 2401 - EXTRACTED HONEY

Entries shall consist of 4, 1-pound queenline glass jars.

<u>Div</u>	<u>Class</u>	
2401	0101	Extra-Light Extracted Honeys
2401	0102	Light Extracted Honeys
2401	0103	Light Amber Extracted Honeys
2401	0104	Amber Extracted Honeys
2401	0105	Dark Extracted Honeys

#### DIVISION 2402 - CREAMED & CHUNK COMB HONEY

Entries shall consist of 4, 1-pound glass jars - cylindrical jars preferred.

<u>Div</u>	<u>Class</u>	
2402	0201	Creamed Honey
2402	0202	Chunk Comb Honey

#### DIVISION 2403 - CUT COMB HONEY

<u>Div</u>	<u>Class</u>	
2403	0301	Cut Comb Honey - Entries shall consist of 4, 12-ounce combs in plastic boxes.
2403	0302	Section Comb Honey- Entries shall consist of 4 wood sections packaged in cardboard cellophane window cartons or 4 round sections with clear covers and labels or 4 half-combed cassettes.

#### DIVISION 2404 - BEEKEEPING PHOTOGRAPH

Entries shall consist of one 5x7 or 8x10 photograph depicting some aspect of beekeeping. Photograph must be mounted in a frame for display

<u>Div</u>	<u>Class</u>	
2404	0401	Beekeeping Photograph

#### DIVISION 2405 - ART DESIGN IN BEESWAX, Molded items

Entries shall consist of 2 items containing beeswax as an ingredient. (Exhibitor must supply ingredient list with weights of ingredients from largest weight to least weight.)

<u>Div</u>	<u>Class</u>	
2405	0501	Art Designs in Beeswax, molded
2405	0502	Lotion Bars, molded
2405	0503	Soap Bars, molded

#### DIVISION 2406 - BEESWAX CANDLES

Entries shall consist of a pair of beeswax candles that are either molded or dipped.

<u>Div</u>	<u>Class</u>	
2406	0601	Beeswax Candles

### DIVISION 2407 - GIFT BASKET

Entries shall consist of a gift basket of honey and products made from, or with, products of the hive.

<u>Div</u>	<u>Class</u>	
2407	0701	Gift Basket

### DIVISION 2408 - BEEKEEPING CRAFT

Entries shall consist of a craft item depicting some aspect of beekeeping.

<u>Div</u>	<u>Class</u>	
2408	0801	Beekeeping Craft

## OPEN CLASS OVERALL AWARDS

Best of Show Honey - \$50 cash ~ **Nebraska Beekeepers Association**

Best of Show Wax Exhibit - \$50 cash ~ **Nebraska Beekeepers Association**

Best of Show Comb Honey - \$50 cash ~ **Nebraska Beekeepers Association**

Best of Show Gift Basket or Craft Exhibit - \$50 cash ~ **Nebraska Beekeepers Association**

Best of Show Beekeeping Photography -"ABC & XYZ of Bee Culture"- \$25 gift cert - **A.I. Root Company**

Open Class Sweepstakes ~ \$100 cash ~ **by Dr. Marion Ellis**

## Bee Culture Department - Divisions 2409-2413 Youth Division (18 & Under)

Divisions 2409-2413 contain classes for exhibitors age 18 and under as of Jan 1. Birth date must be listed on entry form.

### DIVISION 2409 - EXTRACTED HONEY

Entries shall consist of 4, 1-pound queenline glass jars.

<u>Div</u>	<u>Class</u>	
2409	0901	Youth Extracted Extra-Light or Light Honey
2409	0902	Youth Extracted Light Amber or Amber Honey
2409	0903	Youth Extracted Dark Honey

### DIVISION 2410 – BEESWAX, MOLDED OR SCULPTED

Entries shall consist of 1 or more items of molded or sculpted beeswax.

<u>Div</u>	<u>Class</u>	
2410	1001	Youth Beeswax

### DIVISION 2411 - HIVE PRODUCTS DISPLAY

Entries shall consist of a basket or box of hive products, which could include but not limited to: extracted honey, comb honey, chunk comb honey, pollen, propolis, and products containing honey or beeswax.

<u>Div</u>	<u>Class</u>	
2411	1101	Youth Hive Products Display

### DIVISION 2412 – YOUTH VISUAL ARTS

Entries should educate the public about some aspect of beekeeping.

<u>Div</u>	<u>Class</u>	
2412	1201	Youth Beekeeping Drawing or Painting – Entries must consist of a drawing or painting depicting some aspect of beekeeping. Entry must be mounted in a frame for display.
2412	1202	Youth Beekeeping Poster- Posters are to use photography to tell the story of a Beekeeper, or may focus the lifecycle of a honey bee or honey bee pest.

2412 1203 Youth Beekeeping Photograph – Entries must consist of one 5"x7" or 8"x10" photograph depicting some aspect of beekeeping. Photograph must be mounted in a frame for display. *New in 2016.*

**DIVISION 2413 - BEEKEEPING CRAFT**

Entries shall consist of a craft item depicting some aspect of beekeeping.

Div      Class

2413    1301    Youth Beekeeping Craft

**YOUTH OVERALL AWARDS**

Best of Show Youth Exhibit - \$50 cash ~ **Nebraska Beekeepers Association**

Best of Show Youth Honey Exhibit - \$25 gift certificate ~ **Dadant & Sons**

Best of Show Youth Wax Exhibit - \$25 gift certificate ~ **Brushy Mountain Bee Farm**

Best of Show Beekeeping Craft - \$25 gift certificate ~ **Mann Lake Supply**

Best of Show Youth Visual Arts - \$25 gift certificate ~ **Valhalla Bee Farm**

Best of Show Youth Hive Products Display - \$50 cash ~ **Nebraska Beekeepers Association**

Best of Show Poster - \$25 cash ~ **Nebraska Beekeepers Association**

Youth Division Sweepstakes ~ \$100 cash ~ **Nilson Farms and Apiary**

**Given in memory of Joe and Theresa Dolezal**

Plus a special award jacket present by the **Nebraska State Fair Board**

**Judging Standards for Apiary Products**

<b>Extracted Honey</b>	points
Appearance & uniformity of containers	5
Uniformity & accurate volume of honey	5
Freedom from crystals	10
Freedom from impurities, including froth	20
Uniform honey in all containers of the entry	5
Color	10
Brightness	10
Flavor & aroma	15
Density, no additional points below 16% moisture	20
<b>Total</b>	<b>100</b>

<b>Creamed Honey</b>	points
Appearance & uniformity of containers	5
Uniformity & accurate volume of honey	5
Firmness of set (not runny but spreadable)	20
Texture of granulation (smooth & fine)	20
Absence of impurities, including froth	15
Uniform honey in all containers of the entry	10
Color	10
Flavor & aroma (undamaged by heat, smoke, etc.)	15
<b>Total</b>	<b>100</b>

<b>Chunk Comb Honey</b>	points
Uniformity/cleanliness/general appearance	30
Freedom from impurities & granulation	20
Quality of the liquid honey	25
Quality & neatness of comb honey	20
Uniform & accurate volume of honey	5
Total	100
<b>Cut Comb Honey in Plastic Boxes</b>	points
Accuracy & neatness of cut edges of comb	20
Uniform depth & filling of honey cells	20
Complete, uniform & clean cappings	20
Quality, quantity & uniformity of honey	20
Freedom from leakage & general appearance of pack	20
Total	100
<b>Section Comb Honey (wood or round)</b>	points
Suitability, uniformity & cleanliness of sections	15
Completeness, uniformity & cleanliness of cappings	30
Uniform & completely filled honey cells	30
Quality & uniformity of honey	15
Weight & completeness of attachment of comb	10
Total	100
<b>Beekeeping Photo, Drawing, Poster or Painting</b>	points
Originality	25
Technical merit	25
Educational merit	25
Framed Display	25
Total	100
<b>Beeswax Candles</b>	points
Color between straw & canary yellow	25
Cleanliness (free from honey & impurities)	25
Freedom from cracking, shrinking & marks	25
Neatness of workmanship	25
Total	100
<b>Gift Basket or Hive Product Display</b>	points
Originality	25
Eye appeal & neatness	25
Suitability of containers & contents	25
Quality of contents	25
Total	100
<b>Beekeeping Craft</b>	points
Originality	25
Neatness of workmanship	25
Educational Merit	25
Eye appeal	25
Total	100