

WELCOME FROM THE ROUTT COUNTY COMMISSIONERS

Welcome to the 105th Annual Routt County Fair - a tradition that continues to bring together the community members of Routt County and many visitors each year for a week of summer fun! Over the many decades the fair has been held, countless community volunteers and local businesses have worked together to bring us all closer to our county's agricultural heritage and provide an event where people can meet up with their friends and neighbors. For many area residents, this is a unique event where children, young adults, parents, and grandparents have been coming together every year since they were children. With continued County support and literally tens of thousands of hours from dedicated volunteers, today's Routt County Fair is held on the same tract of land as it was 105 years ago.

The Routt County Fair was born of a time when "children did chores, arrowheads could be found on the back 40, and ice was cut from the river. Since then we've seen the outhouse hauled away, the plow horse replaced by a John Deere and farm kids majoring in agribusiness." The Fair honors the pioneers who gathered at the Routt County Fairgrounds for the last 105 years to "share laughter and lies."

With County support, today's Fair is organized by the Routt County Fair Advisory Board, a nine-member volunteer board appointed by the County Commissioners. While this board works closely with the County Commissioners, it is the board members who spend countless volunteer hours to produce the annual Routt County Fair for the enjoyment of locals and visitors alike. They truly deserve our thanks for a job well-done in a sometimes thankless position.

Routt County dedicates lottery dollars to improvements at the fairgrounds. With the addition of the new bath house in 2012, a new sound system in 2014, a pedestrian bridge crossing Dry Creek that was donated by a structural engineering class from the Babson Carpenter Technical Education Center in Hayden, new RV Park with full hook-ups, paved midway, upgraded electrical in the midway, and new RV Dump we continue to improve the facilities at the fairgrounds according to the 2010 master plan. You will also notice some significant improvements in the Exhibit Hall. Thanks to the Routt County Fair Cookbook Committee and their generous donations, the hall has received a facelift. Our latest projects, Phase II of the GOCO funded fairgrounds improvement includes the new pedestrian bridge, improved pedestrian pathways and a sand volleyball court. GOCO grants, lottery dollars and grants from the Associated Governments of Northwest Colorado make these improvements possible.

We encourage you to take some time to participate in, appreciate and enjoy the 105th Annual Routt County Fair. It truly is the culmination of Routt County citizen pride and efforts. Please remember to thank a Fair Advisory Board member when you see them - they deserve it!

Beth Melton, Chair
Doug Monger
Timothy V. Corrigan

TABLE OF CONTENTS

Fair Staff.....5

FairSchedule.....10

Friends of the Fair.....14

Memorials.....18

Fair Parade Marshals.....24

Fair Royalty.....26

General Rules & Regulations.....30

FRI-SUN, August 9-11, Events.....42

MONDAY, August 12, Events.....47

TUESDAY, August 13, Events.....48

WEDNESDAY, August 14, Events.....52

THURSDAY, August 15, Events.....84

FRIDAY, August 16, Events.....88

SATURDAY, August 17, Events.....94

SUNDAY, August 18, Events.....98

4-HThank-Yous.....100





AIRPORT SHUTTLES • TAXI • LIMO • CHARTERS

**Is proud to support the 105th Routt County Fair.
Best of luck to all 2019 participants!**



SAM'S SADDLE SOLUTIONS

SAM PAPALIMU | CLARK, CO



Do you have an understanding about proper saddle fit?

Do you want to know why saddle fit is important?

Does your horse seem comfortable while riding?

SADDLE FIT EVALUATIONS

SADDLE FIT CLINICS, LECTURES, DEMOS

TW & SPECIALIZED SADDLES REPRESENTATIVE

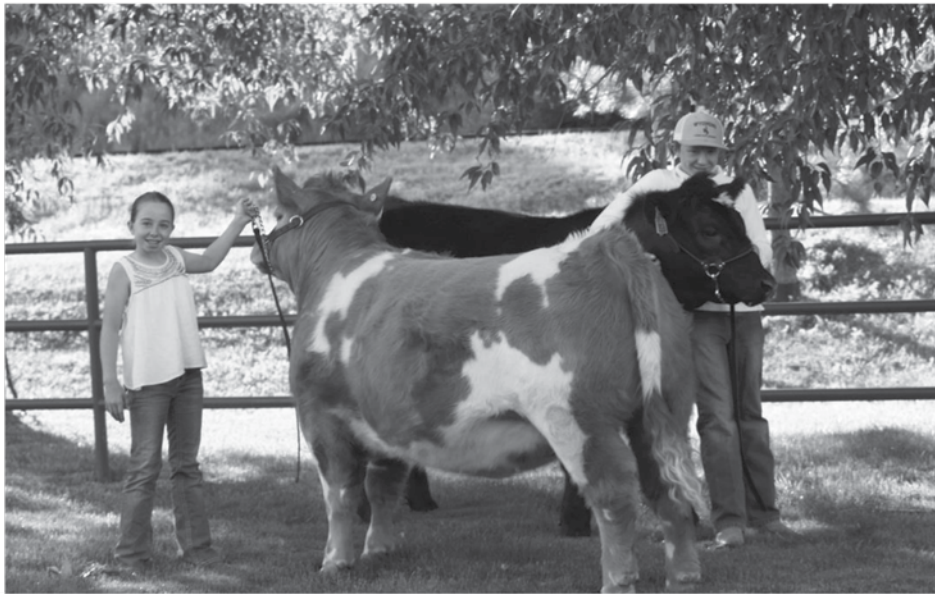
| 717-574-2958 |

samssaddlesolutions.com



JOIN US



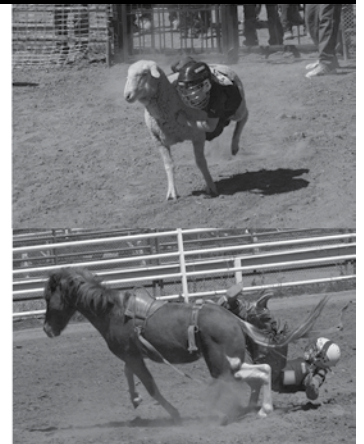


Thank you to Eric Pingley and Master Petroleum, Dan and Linda Souders, and the Montieth Family for purchasing our 2018 Market Beef. Thank you also to our generous supporters throughout the years: Rooney's Round Mountain Ranch, Dan and Linda Souders, Eric Pingley and Master Petroleum, Diehl Builders, Snyder and Counts Feed, Elk Mountain Ranch, and The Colfer Family. We are grateful for so many who are there to encourage us throughout the year and lend a helping hand when needed. Thank you to the Rooney Family, Larry Guss and Jackie Grimaldi, Uncle Lee, Grandpa and Grandma Geri, Rod Wille, Rod Olinger, The Heid Family, and Mom and Dad.

Emmitt and Josie Meyring

PROUD SPONSOR OF THE 2019 ROUTT COUNTY FAIR!

Good luck!
MUTTON BUSTIN'!
HOME ARTS!



YVEA.COM
970.879.1160



FAIR ADVISORY BOARD MEMBERS

David Long, President (member since 2003)
Don Hayes, Vice President (member since 2008)
Linda Long, Secretary/Treasurer (member since 1991)
Bethany Aurin (member since 2016)
Tina Decker (member since 2017)
B.J. Diehl (member since 2015)
Lane Iacovetto (member since 2015)
Lynn Powell (member since 2015)
Ben Vannoy (member since 2017)

FAIRGROUNDS EMPLOYEES

Jill Delay, Fairgrounds Manager/Fair Coordinator
Jim VanderTook, Maintenance
Ginny Sanders, Custodian

ROUTT COUNTY CSU EXTENSION STAFF

Libby Christensen, Family & Consumer Science, 4-H Agent
Tami Eggers, 4-H & Youth Development Agent
Todd Hagenbuch, Agriculture Agent, Director
Jessica Quigley, Administrative Assistant

FAIR SUPERINTENDENTS

Adopt-A-Pig: Lynn Powell, Lane Iacovetto
Adult Adopt-A-Pig: Lynn Powell, Lane Iacovetto
Barn Dance: Jill Delay
Bonfire: Jill Delay
Demolition Derby: Ben Vannoy, Don Hayes
Dress Your Animal: Bethany Aurin, Ben Vannoy
Home Arts/Exhibition Hall: Linda Long
Art: Rita Herold, Nita Naugle
Baked Goods: Charlene Barnes, Mary Valora, Janie Jazwick,
Lyla Backes
Canned Goods: Nancy Mucklow, Tegan Anderson
Clothing: Deanna Berry, Ellen Bonnifield
Crafts/Hobbies: Jeannie Wixson, Kathy Reck, Rhonda Green
Farm Products: Jody Camilletti
Flowers: Suzie Copeland, Lois Caster, Frannie Beacom, Ashley
Sweetser, Becky Stephenson
Needlework: Shirley Gossert, Patricia Bennett, Bonnie
Standridge, Linda Signs
Photography: Dana Haskins, Greg Backes, Robin Wilson,
Gail Hanley, Carolyn Altman, Laura Johnson
Quilting: Madeleine Vail, Jackie Grimaldi, Cindy Doran,
Chris Hensen, Cathy Gero, Peggy Hoff, Ann McCoy
Vegetables & Crops: Linda Long, Kami Long, Susi Crouner,
Glenda Luark
Wine & Beer: Patrick & Tammie Delaney
Woodworking & Small Hobbies: Barbara Cannizzo, Don

Sperry
Wool: Linda Long
Horse Shoe Pitching Contest: Routt County Fair Royalty
Jackpot Rodeo: Tina Decker, Don Hayes
Mini-Bronc Riding: Don Hayes, Tina Decker
Mutton Bustin: B.J. Diehl, Lynn Powell
Open Draft Horse: Mardi Anson, Bethany Aurin, Tina
Decker
Open Horse Show: Bethany Aurin, Tina Decker, Aleigh
Aurin
Pretty Baby Contest: Tena Frentress
Sweet N' Spicy Contest: Nancy Mucklow, Jody Camilletti
Ranch Sorting: Lane Iacovetto
Youth Bull Riding: Don Hayes, Tina Decker

4-H FAIR SUPERINTENDENTS

Horse: Kristy Ragan, Lucianne Myhre, Kathy Yeiser
Dog: Cathy Shryock, Barb Clark
Small Animal: Roger & Nancy Muhme, Diane Merrell
Swine: Yvonne Carrouth, Lane Iacovetto, Connie Hawn
Goat/Sheep: Kristen Corriveau, Hollie Sutton, Lysa Long,
Shari Yeager
Beef: Jeannie Jo Logan, Lee Meyring DVM
Round Robin: Millie Delaney

InSite Media is the proud designer
of the Routt County Fair.

Best of luck to all 2019 participants!



InSite Media is a full-service marketing and design agency, specializing in web design, social media, email marketing, copywrite, branding, SEO, and more.

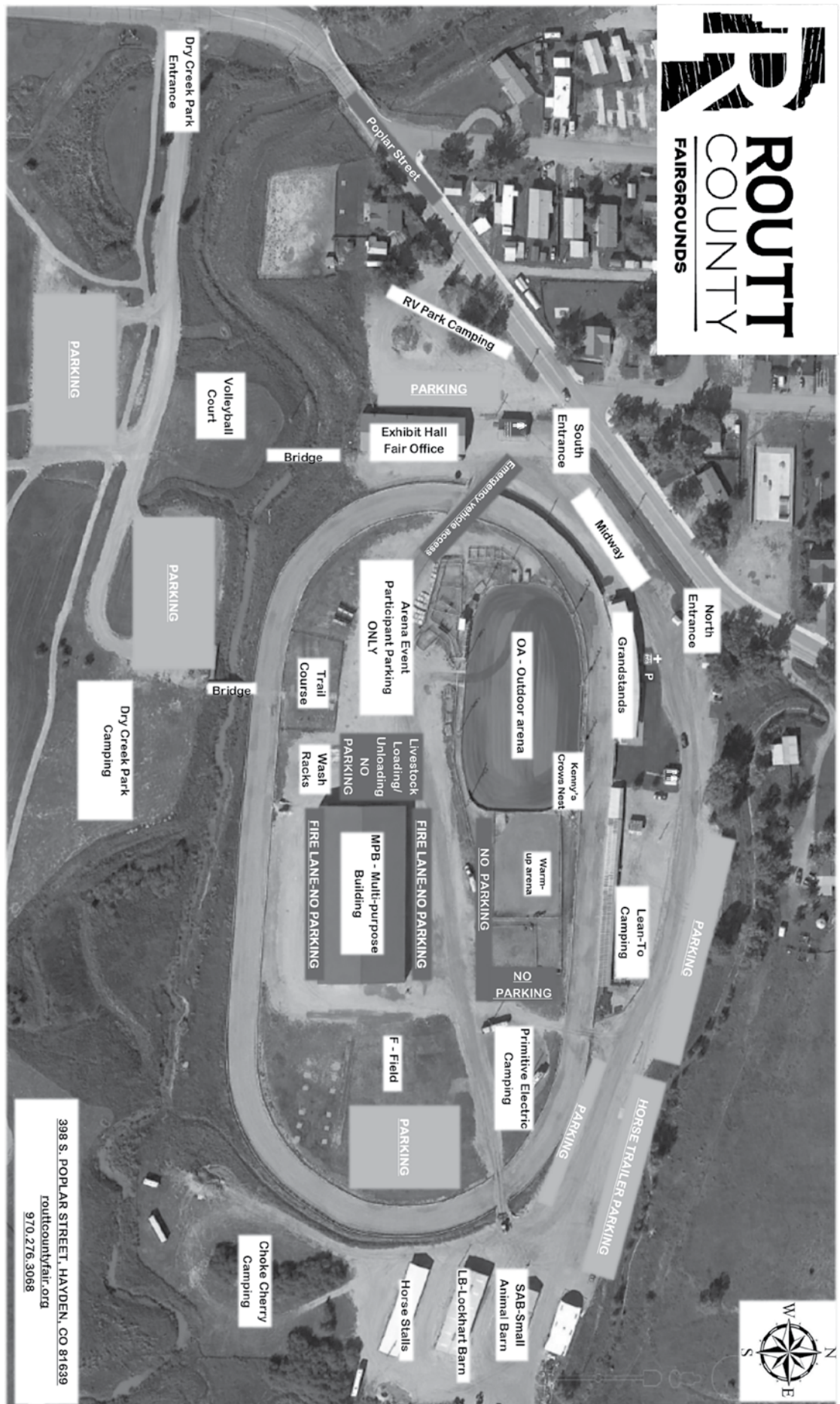
CONTACT

Ashley McMurray
ashley@insitemediamarketing.com
970.846.0613

LEARN MORE

insitemediamarketing.com





HILL PETROLEUM

**2970 E Hwy 40 - Craig CO
970-824-3232**



Propane & Race Fuel

Transport & Bobtail Fuel Delivery

Oils & Lubricants



**Family Owned
&
Operated for over 30 years**

THANK YOU TO OUR SPONSORS!

PLATINUM SPONSORS



GOLD SPONSORS

Bear River Valley Co-op
Cook Chevrolet, Subaru & Ford
Flat Tops Ranch Supply
Resort Lodging Company
Rogue Resources
Yampa Valley Electric Association

SILVER SPONSORS

Elk River Pet and Ranch
Murdochs Ranch & Home Supply
Rapid Care Steamboat
Steamboat Lumber
Temple Construction

COPPER SPONSORS

Outlaw Environmental
Rocky Mountain Farmers Union

BRONZE SPONSORS

Case Enterprise
InSite Media
NAPA Steamboat/Hayden
Saddleback Ranch

OTHER:

Circle K Ranch
Sew Steamboat

FAIR SCHEDULE

Schedule is subject to change, check Facebook and www.routtcountyfair.org for the latest updates. Text "2019RCFAIR" to 888777 to receive schedule changes via text message.

LEGEND

EH Exhibit Hall

F Field

LB Lockhart Barn

M Midway

MPB Multipurpose building

OA Outdoor Arena

SAB Small Animal Barn

T Track

FRIDAY AUGUST 9

8am 4-H/FFA Livestock Stalling (MPB)
8:30am Open/4-H Ranch Horse Versatility (OA)
6pm Open Horse Show Freestyle Reining/ Dressage (OA)

SATURDAY AUGUST 10

8am 4-H/FFA Livestock Stalling (MPB)
9am Open Horse Show (OA)
4pm Saddle Fitting demo (T)
5pm Horse Shoe Pitching Contest (F)
6pm Ranch Sorting

SUNDAY AUGUST 11

8am 4-H/FFA Livestock Stalling (MPB)
9am Open Horse Show/Gymkhana (OA)

MONDAY AUGUST 12

8am 4-H/FFA Livestock Stalling (MPB)
9am 4-H Horse Show (OA)
9am Home Arts Superintendent Set Up
6pm 4-H Roping (OA)

TUESDAY AUGUST 13

8am 4-H/FFA Livestock Stalling (MPB)
8:30am 4-H Dog Show (F)
9am 4-H English Show (OA)
12pm 4-H Gymkhana (OA)
12pm 4-H Rabbit and Poultry Check-in (SAB)
6pm 4-H/FFA Swine Weigh-in (MPB)
8pm Dance for 4-H/FFA members (MPB)

WEDNESDAY AUGUST 14

8am 4-H/FFA Poultry Show (SAB)
Open Poultry Show (immediately

follows 4-H Show) (SAB)
10am 4-H/FFA Sheep and Goat Weigh-in (MPB)

11:30am-12:30pm Steer Weigh-in –**MPB CLOSED TO PUBLIC DURING STEER WEIGH-IN - (MBP)**

1-8pm Home Arts Check-in (EH)

3pm 4-H/FFA Swine Showmanship (MPB)
Market Swine Show (immediately follows Showmanship) (MPB)
5-7pm FFA Alumni Fundraiser Meal all are welcome (F)

7-7:30pm Rocky Mountain Farmers Union Ice Cream Social (F)

7:30pm Open Jackpot Team Roping (with breakaway) (OA)

THURSDAY, AUGUST 15

Exhibition Hall, Vendors, Inflatables, Midway open

8am Exhibit Hall open
8am 4-H/FFA Rabbit Show (SAB)
Open Rabbit (immediately follows 4-H Show) (SAB)

9am Home Arts Judging begins (EH)
10am-6pm FM Light & Sons Ag Experience (LB)
11:00am 4-H/FFA Goat Show (MPB)
Utility Goat Show
Dairy, Pygmy, Fiber Goat Show
Non-Market Goat Showmanship
Market Breeding Goat Show
Market Goat Showmanship
Market Goat Show

2pm Bum Lamb Contest (MPB)
2pm 4-H/FFA Breeding Sheep Show (MPB)
4-H/FFA Sheep Showmanship (immediately follows) (MPB)

FAIR SCHEDULE

6:30pm 4-H/FFA Market Lamb Show
(immediately follows) (MPB)
6:30pm Horse Races (T)
7pm Beer Garden (OA)
Cheers to 105 Years Bonfire (OA): Live
entertainment with Susie Knight, Trevor
Guire, Kyle Allgood

FRIDAY, AUGUST 16

**Exhibition Hall, Vendor, Inflatables,
Midway open, "Ride Free Fun
Friday!" Inflatable rides are free
courtesy of Mountain Valley
Bank**

8am Exhibit Hall opens
9am 4-H/FFA Llama show (MPB)
9am Cloverbud for a day (EH)
9am-6pm FM Light & Sons Ag Experience (LB)
10am Dress Your Animal Contest (MPB)
10am-4pm Heritage Demonstrations (EH)
11am "Mountain Valley Bank Ride Free Fun
Friday" (M)
12pm Bucket Calf Show (MPB)
12:30pm 4-H/FFA Dairy/Beef Breeding Show
(MPB)
2pm 4-H/FFA Beef Showmanship (MBP)
Market Beef (immediately follows)
(MPB)
5pm Sweet 'n Spicy Contest (EH)
5pm Taste of the Fair Bake Sale (EH)
6pm Wine and Beer Contest (EH)
7:30pm **Hill Petroleum Demolition Derby, Pig
Wrestling, (access to beer Garden
included with ticket purchase),
Tickets Required (OA), Routt
County Fair Royalty Crowning during
intermission**

SATURDAY, AUGUST 17

**Exhibition Hall, Vendors, Inflatables,
Midway open, "Ride Free" Courtesy
of the Town of Hayden**

8am Exhibit Hall opens
8:30am 4-H/FFA Round Robin Showmanship
(MPB)

10am Lion's Club Parade, downtown Hayden
10am-4pm FM Light & Sons Ag Experience (LB)
11am YVEA's Mutton Bustin' (T)
11am - 7pm Town of Hayden's Ride Free Super
Saturday
12pm Open Barrel Race, Youth Bull Riding,
Mini Broncs (OA)
1-3pm Heritage Demonstration (EH)
3pm 4-H Presale/Bobby Robinson Memorial
BBQ (F)
3pm KRAI Free Coke Floats (F)
4:30pm Junior Livestock Sale (MPB)
8:30pm **Peabody Energy Barn Dance w/Live
Music by "Hunter Hathcoat" (M)**

SUNDAY, AUGUST 18

**Exhibition Hall, Vendors,
Inflatables, Midway open, MPB
Closed**

8am Exhibit Hall Opens
8:30am Chuck Fulton Memorial Open Draft
Horse Competition (OA)
10am Pretty Baby Contest (EH)
10am-1pm FM Light & Sons Ag Experience (LB)
11am-1pm Heritage Demonstrations (EH)
11am-2pm 4-H/FFA Pen tear-down – MPB closed
to public
11am YVEA's Mutton Bustin' (T)
12pm Jackpot Rodeo (OA)
2-6pm HOME ARTS EXHIBITS RELEASED,
open class payout (EH)
2pm Adopt-A- Pig, pre-registration and fee
required (T)
2:30pm Flat Tops Ranch Supply Adult Adopt-A-
Pig contest, pre-registration and fee
required (T)



RE/MAX
PARTNERS

*Your partners
in real estate!™*

155 Anglers Dr., Ste. 200,
Steamboat Springs, CO 80487

**Dedicated to preserving the traditions and
heritage of the Yampa Valley.**



RANCHES • LAND • HOMES • CONDOMINIUMS

*Delivering exceptional real estate service to exceed your
expectations, with proven results.*

- 2017 Circle of Excellence Award
- 2016 Circle of Excellence Award
- 2015 Global Summit Award
- 2014 Circle of Excellence Award

Ivy Baker, CNE

Broker Associate | Ivy.Baker@icloud.com

☎ 970.846.7707 | 📞 970.879.7653

Each Office Independently Owned and Operated.

Offering scenic horseback rides in a scenic environment.



970-879-3495
Reservations requested.

www.steamboathorses.com

Hourly horseback rides available
2 miles left of The Clark Store



FRIENDS OF FAIR



Dedicated to all the Home Arts Superintendents and Helpers

The 2018 Routt County Fair was a record-breaking year with 1,912 home arts entries exhibited in the hall! It is the dedication from each and every one of our Home Arts volunteers as they work tirelessly receiving the exhibits and preparing each for the judging and then displaying each to show the best.

Department/2018 entries/Volunteers:

Art, 419 entries - Nita Naugle, Rita Herold.

Baked Goods, 128 entries – Charlene Barnes, Mary Valora, Janie Jazwick, Lyla Backes.

Canned Goods, 151 entries - Nancy Mucklow, Eileen Grover, Tegan Anderson.

Clothing, 58 entries – Deanny Berry, Ellen Bonnifield

Crafts/Hobbies, 133 entries - Jeannie Wixson, Kathy Reck, Rhonda Green

Farm Products, 54 entries - Jody Camilletti

Flowers, 100 entries - Suzie Copeland, Lois Caster, Frannie Beacom, Ashley Sweetser, Becky Stephenson

Needlework, 115 entries - Shirley Gossert, Patricia Bennett, Bonnie Standridge, Linda Signs

Photography, 322 entries - Dana Haskins, Greg Backes, Robin Wilson, Gail Hanley, Carolyn Altman, Laura Johnson

Quilting, 83 entries - Madeleine Vail, Jackie Grimaldi, Cindy Doran, Chris Hensen, Cathy Gero, Peggy Hoff, Ann McCoy, Larry Guss

Sweet 'N Spicy contest, 15 entries – Nancy Mucklow, Jody Camilletti

Vegetables & Crops, 213 entries - Linda Long, Kami Long, Susi Crowner, Glenda Luark

Wine & Beer, 15 entries - Patrick & Tammie Delaney

Woodworking & Small Hobbies, 93 entries - Barbara Cannizzo, Don Sperry
Wool, 7 entries - Linda Long

The Superintendents and helpers serve for at least three days putting in 8-10 hours per day or until the job is done. It's their dedication to each job from each and every one that makes the Routt County Fair Home Arts bigger and we think, better than surrounding counties combined and even the State Fair! Fair staff and volunteers from all over the state ask how we get so many entries. The answer is our volunteers. All year long they encourage the residents of Routt County to share their talents.

So, THANK YOU to all our Home Arts volunteers for your efforts, hours, talents, and entries. You make our fair so special.

An advertisement for 3B Enterprises LLC. The background is a black and white photograph of large, rough-textured rocks in the upper half and a bed of smaller, smooth gravel in the lower half. Overlaid on this background is the company name "3B ENTERPRISES" in a large, bold, sans-serif font. Below the name is a thick black horizontal bar with the letters "LLC" in white on the right side. Underneath the bar, the text "SAND, GRAVEL & ROCK PRODUCTS" is written in a bold, sans-serif font. This is followed by "1200 E. FIRST ST." in a smaller font. The phone number "970-824-0225" is displayed in a very large, bold, sans-serif font. At the bottom, the text "limestone & custom crushing" is written in a bold, sans-serif font, followed by the website "www.3BERock.com" in a bold, sans-serif font.

3B ENTERPRISES LLC
SAND, GRAVEL & ROCK PRODUCTS
1200 E. FIRST ST.
970-824-0225
limestone & custom crushing
www.3BERock.com

Routt County Fair

Congratulations

**WE WISH THE VERY BEST
TO ALL PARTICIPANTS**

Twentymile Mine

**Proud to be a
Sponsor of the
Routt County Fair**



29515 Routt County Road 27
Oak Creek, CO 80467



Flood Mitigation
Water Main Installation and Repair
Erosion Control
Storm Drainage
Clearing and Grubbing
Sewer Main Installation and Repair
Excavation
Site Grading
Underground Dry Utilities
Overburden Removal
Road Building/Grading
Land Reclamation
Snow Plowing
Mass Excavation/Site Development
Concrete
Asphalt Parking/Drives

150 N. 2nd St.

Hayden, CO 81639

(970)756-1150

(970)276-2192

MEMORIAL TRIBUTES

John Hayes was born on March 23, 1944 in Hayden, Colorado. He was the youngest of 13 children born to William and Lily (Doyle) Hayes. John spent 54 of his years of life in Hayden and those years were packed with a whole lot of living and plenty of hard work! He was the kind of guy that 'never met a stranger.'

Growing up in Hayden, one could imagine there wasn't a lot to do for entertainment. That was never a problem for John, his friends and his brothers. Ever mischievous and up for a good joke, John kept everyone on their toes. From dressing up in disguises and pulling off hilarious pranks like being part of an outlaw gang that held up the stagecoach in the Routt County Fair muton, taking the town banker and several other prominent citizens hostage at gun point, (not loaded, mind you) later to be released for ransom. Yes, that's a true story!



John was not only an ornery jokester of the community, but he gave back to it as well. He took an active role in every organization or company that he was a part of. John was a member of the Routt County Fair Board for many years. John purchased many 4-H animals and helped Bobby Robinson prepare his famous BBQ for the 4-H sale. He was involved in and promoted multiple events at the fair, such as the fair parade, the rodeo, horse racing, chariot racing, team pulling and other pieces of cowboy heritage. He knew the importance of keeping those traditions alive because horses were always a major part of his life.

John enjoyed any competition you could do horseback. He was a race jockey riding Quarter Horses in his early days, which led him to owning his own race and chariot horses. He promoted the wild horse race at fair, which he participated in as the bronc rider. He team roped, did draft horse pulling contests and in his later years, enjoyed riding and showing cutting horses with his family. John enjoyed showing cutting horses and won many prestigious awards doing so and often described those experiences as some of his favorite times in his life!

John was truly a jack of all trades; he learned and accomplished anything he set his mind to. Ever the entrepreneur, the many hats he wore were in the lines of construction, coal miner, trucker, cattle hauler, cattle buyer, farmer, rancher, horse transport and finally retiring as the farm foreman for True Ranches in Wheatland, Wyoming. John and Judy, his wife of over 50 years, moved from

Hayden to Wheatland in 1998 to be near their daughter Traci and to be able to watch their grandchildren grow up.

John will always be remembered for his humor, his love of working hard and for his smile which was contagious! He always had somewhere to go, something to do and someone to talk to. He enjoyed life to the fullest and always enjoyed lending a hand to those who needed it. He had an uncanny ability to make even a complete stranger feel comfortable and accepted. John was not only a builder of places and things, but of people.

Clayborn (Clay) Davis Hayes – July 14, 1958 – July 23, 2018

Clayborn Davis Hayes passed away at his home in Hayden, Colorado on July 23, 2018 after losing his battle to cancer. Clay was born on July 14, 1958 in Hayden's Solandt Memorial Hospital to Bill and Belva Hayes.

Clay attended schools in Hayden and Oak Creek growing up. He enjoyed playing football in school. At the end of his senior year he joined the army in 1977. He served in the army until 1979 at which time he returned to his "home" in Hayden. He liked horses, roping, working around cattle and was a member of the Hayden roping club for several years. Clay volunteered and rode in many cattle drives for several ranchers in and around Hayden. Clay also worked at the Wapiti Ranch in Clark working with Arabian horses.



Clay enjoyed being around the fairgrounds during the fair, even before his kids were able to join 4-H. He spent many nights helping cook the meat for the 4-H BBQs. He especially enjoyed all the stories from the locals while cooking. Bobby Robinson Sr. used to tell some of the best and they had many laughs while "hanging out" cooking.

Clay raised two children, Jake and Jesse who were part of the 4-H family for many years. They participated in pigs, sheep and beef projects. Clay supported his kids as well as the entire 4-H program. Clay spent many days, nights and weekends at the fairgrounds during the fair. He helped many kids with advice, help with their animals when needed and in any way he could. He assisted in the livestock sales and shows in any way he could. Clay was proud of all the 4-H's and not just his own kids. He always had words of encouragement for the kids in the livestock programs.

Clay worked at Peabody and Trapper mines in the area and was truly a "friend of coal." Clay said on

Clay loved the Yampa Valley and never wanted to leave. He always called it home and believed there was nowhere better or anywhere he would rather be. He was a true Hayden native.



20 • 105th Annual Routt County Fair



**WORK CAN RUN
YOU RAGGED.
FINALLY, YOUR UTV WON'T.**

Not everyone is cut out for the work you do. And you deserve a side-by-side vehicle that can keep up with your pace. That's why Caterpillar is offering its first-ever Cat® Utility Vehicles. The new UTVs offer the superior quality you expect from Caterpillar, including rugged durability, comfortable operation and simple maintenance. **Putting the You in UTV.**

OWN AN ALL-NEW CAT® UTV!

Two-seat models starting at **\$14,999***

Five-seat models starting at **\$16,799***

*Manufacturer's Suggested Retail Price (MSRP)




Find us on the web
WagnerEquipment.com/utv

Give us a Call
(303) 681-6221

Drop us an Email
Weidner_Eric@wagnerequipment.com





Colorado embroidery

- Embroidery
- Screen Printing
- Apparel and Hats
- Gifts & Promotional Products
- Shop Online 24/7

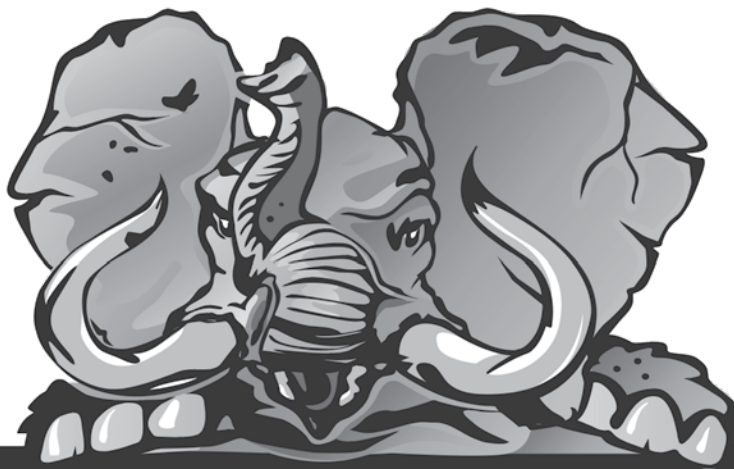
Proud Sponsor of the
Routt County Fair
&
Outfitter of Cowboys and Cowgirls
throughout our valley

970-879-8342
130 9th St.
Steamboat Springs

Shop online 24/7
coembroidery.com

ROGUE

RESOURCES



970-879-7861

EXCAVATING & SPECIALTY SERVICES

22 • 105th Annual Routt County Fair



**You only
live once.
That's worth
protecting.**

Aragon Deborah A Ins Agcy Inc

Debbie Aragon, Agent
404 Oak Street
Steamboat Springs, CO 80477
Bus: 970-879-1756

A conversation about
life insurance now can
make a big impact on
your family (and even
your retirement) later.
LET'S TALK TODAY.



State Farm Life Insurance Company (Not licensed in MA, NY or WI)
State Farm Life and Accident Assurance Company (Licensed in NY and WI)
Bloomington, IL

1708142

FAIR PARADE MARSHALS

C.J. and Nancy Mucklow

CJ and Nancy came to Routt County in 1989 when CJ was hired as the Routt County Extension Agent. CJ first came to ski at Steamboat in the late 1960's and returned in 1978 to work on ranches in the Clark area. CJ and Nancy still ranch there today.

One of their first outings after moving here was to visit the Routt County Fair! Since then, they've made Routt County home, raising their two sons near Clark. Over the years, Andy and David showed 4-H lamb, beef and breeding projects at the Fair and with them came a crew of fans. For years the 4-H show was a highlight for the entire family.



Since becoming empty nesters, CJ and Nancy have found lots of other ways to volunteer at the Fair. CJ enjoys helping with the meat for the Bobby Robinson Barbecue. Nancy volunteers in the Exhibit Hall as a superintendent in the Canned Goods department. For the 100th anniversary of the Routt County Fair, she spearheaded an effort to create a commemorative cookbook featuring recipes from families from 100 years of the Fair. Proceeds from the cookbook go toward improvements to the exhibit hall. A highlight for her was 2018 when she finally earned the Helen Sherrod Outstanding Home Artist award, making 71 entries in the Fair with 52 blue ribbons on her projects!

CJ is famous for his noxious weed entries in the Flower department. Those judges never miss the opportunity to award a black ribbon! He is also known for his homemade Irish Cream entries in the Wine and Beer department. Nancy's favorites remain the Canning and Baked Goods entries. One of her favorite memories is competing against Doris Knott with a banana bread entry and winning a purple ribbon!

CJ and Nancy haven't missed a Routt County Fair since they moved here and the highlights are times spent with Routt County neighbors, friends and family! 2019 will mark their 30th Routt County Fair together!



One Tough Animal.

TOUGH

**JOBS LIKE THIS
REQUIRE THE
ULTIMATE FARMHAND.**

BOBCAT EQUIPMENT IS TOUGH ENOUGH TO TAKE IT ON.

You've got a tough job. And Bobcat® equipment is tough enough to take it on. The performance and comfort features of the new M2-Series loaders from Bobcat along with the most productive attachments in the industry help you manage the work that has to get done, day in and day out.

**CALL US FOR A DEMO, AND TRY A
BOBCAT MACHINE ON YOUR OPERATIONS.**



**Severson Supply &
Rental Co., Inc.**

Authorized Bobcat Dealer

**970-701-3345
seversonsupply.com**

Bobcat®, the Bobcat logo and the colors of the Bobcat machine are registered trademarks of Bobcat Company in the United States and various other countries. 19-B170

2018-19 ROUTT COUNTY FAIR ROYALTY

Bailey Iacovetto - Queen

"If you ever feel like giving up, just remember there's a little girl watching who wants to be just like you"-Anonymous

Hi! My name is Bailey Iacovetto and I am the 2019 Routt County Fair Queen. I am so excited to promote our county fair across this great state of Colorado! I am 17 years old and a Junior at Soroco High School. I am the Soroco FFA Chapter Secretary and District Vice President, High Valley 4-H Club President, as well as a National Honor Society and Student Council member, and Cheer Captain. In my spare time, I enjoy snowmobiling, riding my horses, working on my family's ranch, and spending time with family and friends. The Routt County Fair is near and dear to me, as I have shown horses and market steers for many years and enjoy all our fair has to offer. I encourage you to join me August 9th-18th for the 105th Annual Routt County Fair! ~ I'll see you there!



Britney Iacovetto- 1st Attendant

"You can see what man made from the seat of an automobile, but the best way to see what God made is from the back of a horse." - Charles M. Russell

Hi! My name is Britney Iacovetto and I am the 1st Attendant of the Routt County Fair. I am going to be a sophomore at Soroco High School. I am secretary of the High Valley 4-H Club and a member of the Soroco FFA Chapter. The thing I look forward to most at the Routt County Fair is showing my steers in the 4-H & FFA Market Beef Show. In my spare time, I enjoy riding my horses. My new passion is pasture roping and I love to help my dad rope and doctor steers on the ranch! In my opinion, any day spent on a horse is a good day! I am the fifth generation to live and help work on my family's ranch in northwestern Colorado. Teaching others the important aspects of agriculture and our western heritage is important, and I believe the Routt County Fair helps in doing just that. The Routt County Fair is a special place and our community really comes together and has a good time, supports the local kids showing and selling their animals, and is one of the social highlights of the year. Please join me at the Routt County Fair August 9th - 18th! It is sure to be a good time! ~I'll see you there!

Camryn Dines- 2nd Attendant

Hello everyone my name is Camryn Dines and I am your 2019 Routt County Fair Royalty 2nd Attendant. I am currently a Freshman at Steamboat Springs High School where I play basketball. Some of my hobbies include riding and showing horses and helping my family around our ranch, along with being a hobby rancher. I show Horses in 4-H and raise my own 4-H steers, as well. I hope to see you at the Routt County Fair, August 9th-18th! ~I'll see you there!

From the 1924 Routt County Fair
"Premium Book And Classification List"

ROUTT COUNTY

If considered only as an investment there is nothing more attractive than Northwestern Colorado land at present prices, for improved and irrigated acres can be purchased for less than the government charges for water under some of its reclamation projects. Unimproved, unirrigated land is worth from \$10 to \$100 per acre. It is the best and safest investment to be found in the entire country.

Thank you!!!

I want to thank Moffat County businesses, Frontier Station Inc. and Mountain Meats for buying my 2018 Routt County Grand Champion animals!

Frontier Station Inc.
2018 Grand Champion



Mountain Meats
2018 Grand Champion Lamb



The funds from my market projects and the generosity of my add-on sponsors, Mike & Fran Stoltz, Jackie Grimaldi & Larry Guss, and Ripley Livestock, I was able to show at Colorado State Fair 2018 on two different weekends, Northern International Livestock Expo 2018 in Billings, MT, National Western Stock Show 2019, and put funds in my college account! These experiences have helped me not only in my 4H pursuits but also in my life goals. I have met so many incredible people that have broadened my view of what I could do in my adult agricultural life! Thank you for your generosity that allowed me to do these shows!

I would also like to thank all the people that stood by me while my mother was in the hospital in December and January. SOROCO staff and students, meals from all over Routt County, rides to and from school, athletics, 4H events, ect..., I don't know what my family would have done without your support and kindness. Will Montieth, Danna Chamblin, and my brother Foster, came to my rescue when I thought I was going to have to withdraw from showing at NWSS. They pulled me together at my lowest, helped me prioritize, and Spike Meyring transported my steer and me to Denver for the show. My dad stayed behind to take care of all my other animals and work. My uncle and my grandparents from Texas met me at NWSS and also went and picked up my mom from the hospital to come watch me show! Looking back I don't know how it all got done! Walking into the ring was a win! 1st in my weight category and 2nd in Senior Showmanship was the icing on the cake! Everyone has been so awesome and I am so blessed to have you all in my life! Once again, THANK YOU!!!

Sincerely,
Emi Ramirez
High Valley 4H
SOROCO FFA

NILE 2018



NWSS 2019



BULL MARKET

BEFORE YOU INVEST IN A RANCH,
INVEST IN AN AGENT WHO IS ALSO A RANCHER



CHRISTY BELTON

970.734.7885

Christy@RanchResortRealty.com

www.RanchResortRealty.com



**RANCH & RESORT
REALTY**



WELCOME TO



Stay up-to-date with County programs,
events, and services at **www.co.routt.co.us**

General Rules, Regulations, & Information

ADMISSION: Admission to the grounds is FREE. There is an admission charge for the 4-H BBQ, camping, and the Demolition Derby.

BICYCLES: NO bicycles, skateboards, scooters, hover boards or similar items on fairgrounds during the Routt County Fair.

CAMPING: All visitors and participants wishing to “camp” with placement of a Recreational Vehicle (RV) or tent on the fairgrounds during the Routt County Fair must register and obtain a permit PRIOR to setting up an RV/TENT. “Fair Camping” dates begin the day of the Open Horse Show and end on the last day of Fair. For 2019 the dates are August 9 to August 18. Accommodations are based on availability.

Reservations are made online through “Reserve America” (www.reserveamerica.com) beginning May 1. Campers will pick their location during reservation. Phone, email and USPS mail reservations are not accepted. If someone needs help or does not have access to the internet, they can visit the Fair Office and get help with reservations.

All campers are REQUIRED to complete a camping reservation form after they have made the reservation on Reserve America. This form must be received within 2 weeks of making your reservation.

Fees: Include Fair Camping dates August 9 to August 18, 2019 only. Accommodations based upon availability, \$120 per unit for electrical spaces, \$60 per unit for primitive spaces. Prices do not include taxes or \$3.50 Reserve America transaction fee.

Rules and Regulations:

- Routt County Fair camping dates are defined as beginning the date of the Open Horse Show and ending on the last day of Fair. For 2019 the dates are August 9 to August 18.
- Registrants that wish to arrive early or depart late are required to pay the normal Fairgrounds camping fees

for any days outside of the Fair Camping dates and must be reserved through www.reserveamerica.com.

- RV/TENT must display the proper permit at all times. Permits are available at the Fair office inside the Exhibit Hall.
- Only one RV/TENT and one vehicle are allowed per site (no exceptions). Each registered RV/TENT is given ONE vehicle permit which MUST be displayed or the vehicle will be towed at the owner’s expense.
- The only vehicles/trailers allowed in the designated camping areas are the registered RV/TENT and the ONE registered vehicle. No horse trailers or other vehicles/tents/trailers are allowed to park in the designated camping areas.
- Quiet hours are 10:00pm to 7:00am.
- Camping area must be kept clean at all times for the enjoyment of all our guests. Any type of fencing or barrier is not permitted.
- Any guests, their children or visitors who become a nuisance will be asked to leave.
- Adult supervision is required for each RV/TENT.
- Any vehicle without the proper permit easily visible will be towed at the owner’s expense.
- Camp fires are NOT allowed during the Routt County Fair.

DOGS: Dogs are allowed on the Routt County Fairgrounds during the fair with the following rules:

- Must be under physical control of owner and on a leash no longer than 4 feet in length.
- No dogs allowed in buildings or event staging areas with the exception of qualified ADA service animals and those participating in official Routt County Fair events while they are participating (i.e, Dress Your Animal Contest).
- Owners MUST clean up after their dog immediately.
- Dog must be current on all vaccinations with rabies tag displayed.
- Dog must have a tag with owner identification and contact information.
- No dogs in any of the fairgrounds buildings or grandstands.

General Rules, Regulations, & Information

ALCOHOL & MARIJUANA: Possession or consumption of alcoholic beverages, marijuana, and any illicit drug is forbidden on the fairgrounds (excluding the wine & beer contest and any approved Beer Garden). Drinking, brawling and other misconduct in general on the part of the exhibitors shall be grounds for the Fair management to cause the exhibitor to forfeit all premium monies. 4-H/FFA members: 4-H has no tolerance for the possession or use of alcohol or other illegal drugs and the 4H/FFA alcohol policy will be enforced.

ELIGIBILITY: Participation in the Routt County Fair Home Arts Division is limited to Routt County residents (this includes part-time residents).

ATV/UTV USE: Fair Advisory Board members, Routt County employees and Extension office employees, and anyone authorized by Fair Management are the only people allowed to operate any ATVs/UTVs during the Routt County Fair on the Routt County Fairgrounds.

SAFETY: Fair management will exercise diligence, including the employment of special police to assure the safety of people, animals and exhibits. In no case will Routt County, the Routt County Fair Advisory Board, Fair Superintendents or Routt County Extension Office staff be responsible or liable for loss, damage or injury to any people or property on the fairgrounds. Exhibits will not be accepted subject to any conditions outlined by an exhibitor; completion of an entry by an exhibitor indemnifies Routt County and the Routt County Fair Advisory Board and its agents from any responsibility and/or legal proceedings resulting in claims of liability. Every animal or article entered in a display or competition shall be under the control of the Superintendent of the Department in which it is entered.

GROUND: Use of the fairgrounds and facilities during the Routt County Fair is supervised by the Routt County Fair Advisory Board. Exhibitors are responsible for cleaning stalls and show areas prior to the release of exhibits. Buildings and fences must be kept in repair by users who

are responsible for removing refuse from the premises or placing it in dumpsters. Unless prior arrangements have been made, barn space must be vacant three days prior to opening of the Fair. No butt fans allowed. No generators allowed. ALL ELECTRICAL CORDS MUST BE OF APPROPRIATE SIZE AND LENGTH WITH NO SPLICES.

JUDGING: Any exhibitor, parent or individual who attempts to interfere with a judge or protests a decision in an unseemly manner will be excluded from competition, awards and premiums and may be escorted from the grounds. Since the Routt County Fair is designed to encourage competition and awards for quality displays, exhibitors and purchasers, the public has the right to expect quality behavior. 4H/FFA members must abide by the 4-H Code of Conduct and 4-H Alcohol Policy.

PREMIUMS: All Home Arts open class premiums may be picked up at the Exhibit hall on Sunday, August 18 from 2-6pm. Premiums not collected on Sunday without prior arrangements are forfeited. In the Home Arts department ONLY, blue ribbons will receive premiums of \$1.

UNETHICAL LIVESTOCK PRACTICES: Exhibitors found guilty of any practice deemed unethical by Fair Management will forfeit all premiums and recognition and may be barred from current and future Fairs. Unethical practices include but are not limited to: drenching, icing, doctoring, doping or injecting show animals for body "fill-ins," altering, changing, defacing or modifying the markings or anatomical structure of an animal, removing, altering or purposely damaging ear tags, applying external liniments and blistering agents which cause edematous conditions, using ice packs or other refrigerants to alter the quality of an animal's finish. Animals may not be decorated with any unnecessary trappings during judging. Except for trimming or blocking, altering the color or structure of hair or wool coats is not permitted. With the exception of hoof dressing on hooves, grooming materials evident of artificial color, when rubbed with a cloth

or glove, above the hock will automatically disqualify an entry. The use of non-animal approved products will warrant a disqualification. Colored adhesives and other animal approved products may only be used below the hock. Any animal with an artificial tail head or tail fin, artificial poll, or added hair or hair-like substance will be disqualified. Showing livestock of an ineligible age or unethically fitted is prohibited. Unsafe and/or ill animals will be sent home. If a member is in doubt of the use of a product consult most updated 4-H Member Handbook or the superintendent. Determinations and decisions of disqualification by the Show Committee are final.

GRIEVANCE PROCEDURES: In order to assure fairness, complaints and grievances must first go to the appropriate Department Superintendent. Issues that cannot be resolved by the Department Superintendent must be addressed through the Routt County Fair Grievance Procedure outlined below. All 4-H/FFA Show grievances must be addressed through 4-H/FFA administration, which can be found in the 2019 Member Handbook.

- Contact the Fair Manager through the Fair office located in the Exhibit Hall.
- File a written grievance with the Fair office in the Exhibit hall. Verbal and unsigned complaints will not be considered.
- Fair manager will coordinate a meeting of the Competition Committee.
- Grievances will be evaluated by the Competition Committee made up of three fair advisory board members and two ex-officio members.
- Any person filing a written grievance has the option of making a personal presentation at a grievance hearing. Grievances will be evaluated in a timely manner however, because of time constraints during the annual fair, a decision may not be made until after fair.
- Decisions of the Competition Committee are final.

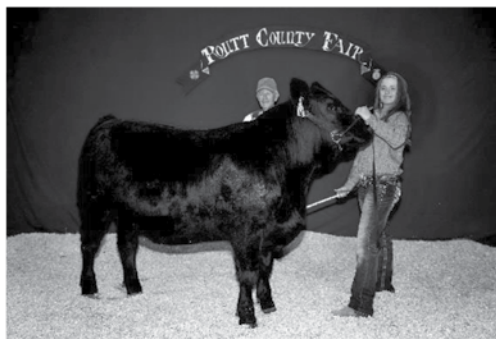
FIRE PRECAUTIONS: Smoking is NOT allowed in or within 25 feet of any of the buildings. Visitors should make an effort to be aware of all marked exits and water faucets; keep electrical cords away from water and walkways and unplugged when not in use. Report conditions which may result in danger. When called, emergency will come down Poplar Street, enter the race track by the Exhibit hall and proceed to the affected area in an emergency. The extent of the fire personnel access to gates and safety of everyone must be considered if it becomes necessary to evacuate animals.

PARKING:

South side of outside arena is NO PUBLIC PARKING. This area is for people participating in the current event being held in the outdoor arena ONLY! Participants are allowed ONE vehicle only! Once the event is over, vehicles and trailers MUST be moved. All others are subject to tow at owner's expense.

- Outdoor Arena Event Participants: park on the south side of the arena.
- Livestock/Horse trailers: should park along the fence on the north side of the fairgrounds.
- Spectators: parking is available in the field on the east side of the multi-purpose building, west side of the exhibit hall or Dry Creek Park.
- The west gate is open only to foot traffic.
- Livestock exhibitors: are allowed to enter the livestock area to load and unload animals.
- Home Arts exhibitors may load and unload on the west side of the Exhibit Hall.

Thank You George Eidsness & Jack Taylor Transwest Truck Trailer & RV

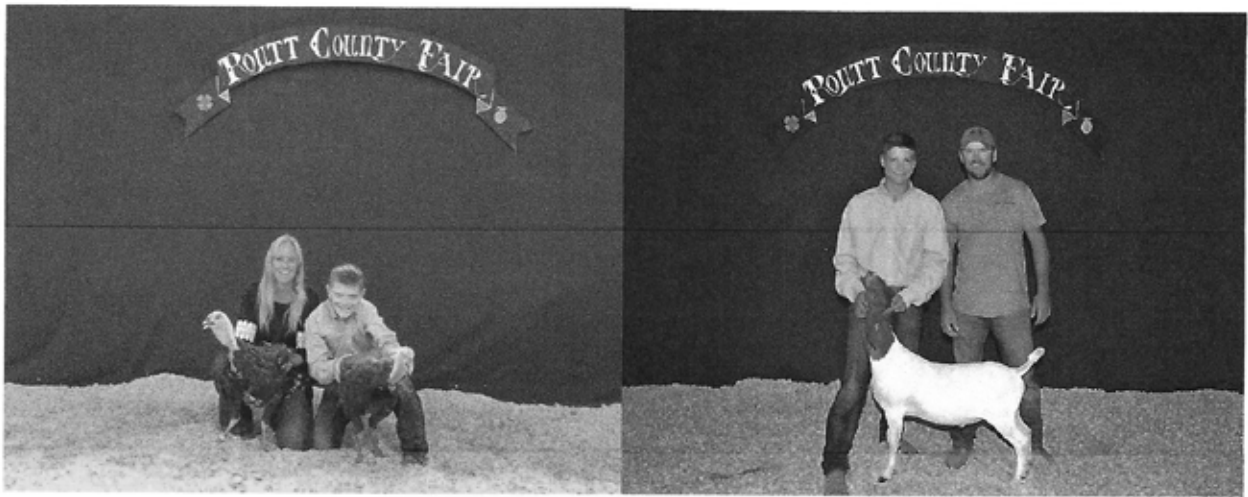


For Buying My 2018 Market Steer

Camryn Dines

Thanks to My 2018 Add-On Sponsors

Chad Bedell
Kurtz Ranch
Jackie Grimaldi & Larry Guss
NEI Construction/Todd Raper
Paul Slivon

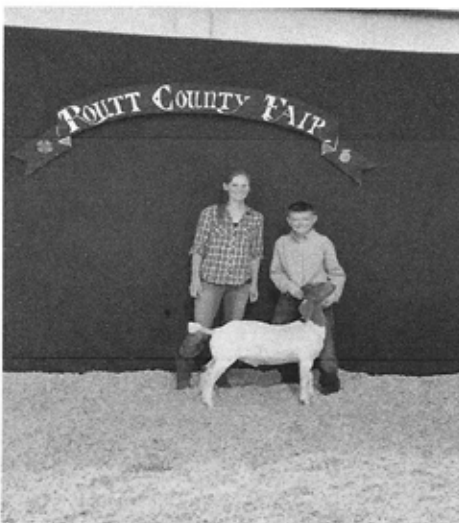


**Thank you Rooney's Round Mountain Ranch and Steamboat Motors
for purchasing our 2018 Market Turkeys.**

**Thank you Sand Creek Enterprises, Michelle Sommerville, and Megan
Gibbs for purchasing our 2018 Market Goats.**

Thank you also to those that continue to support our efforts through
generous contributions: Jackie Grimaldi, Larry Guss, Busby Quarter
Horses, Pioneer Materials, Vectra Bank, Schrader Propane, Chad Bedell,
Ashleigh Muhme, and Ore House at the Pine Grove.

Thank you to our friends and family that encourage us to be our best!
Justin and Jason Heid



Proud Members
of Elk River
Wranglers 4-H
Club



Yarn . Fabric . Notions Classes & Sew Much More

Call or visit our website for more information
or come pay us a visit & see for yourself!

Bring or mention this ad to receive
a 10% discount on any one item.

Valid from August 2019–July 2020



929 Lincoln Ave • 970.879.3222
sewsteamboat.com

Ski Haus

Outfitting your adventures on the range,
campsites along the river,
treks into the mountains,
bivouacs on top of fourteeners,
climbs on rock cliffs,
long bike rides on dirt trails,
epic road rides over high passes,
and more.

Outside, it's where we all feel the best.



Ski Haus. Highway 40 and Pine Grove Road. Steamboat Springs, CO.
970.879.0385. www.skihaussteamboat.com

Thank You

***To all of the special friends of Routt County 4-H and SOROCO FFA.
Congratulations on making the 2018 Junior Livestock Sale a great success!***

Auctioneer services donated by: *Chad Green and Graig Medvesk*
Jr. Livestock Sale & BBQ Sponsors: *Colorado Embroidery, Colorado Event Rentals, Steamboat Motors, Steamboat Pilot, Yampa Valley Bank, Yampa Valley Electric Association*

2018 Top Dollar Purchasers

Blue Ribbon Purchaser: Yampa Valley Electric Association

Red Ribbon Purchasers: Lucky 8 Ranch

White Ribbon Purchasers: Jerry K. Bigelow

2018 Buyers

Grand Champion Market Beef

Frontier Station

Reserve Grand Champion Market Beef

Master Petroleum- Eric Pingley

Grand Champion Market Lamb

Mountain Meat Packing

Reserve Grand Champion Market Lamb

Flat Tops Electric

Grand Champion Market Swine

Bear Creek Animal Hospital & Eyecare Specialties

Reserve Grand Champion Market Swine

Brother's Custom Processing

Grand Champion Market Goat

Bear Creek Animal Hospital, Cook Chevrolet, &

Craig Powersports

Reserve Grand Champion Market Goat

Booco's Contract Services / Booco Girls

Grand Champion Market Turkeys

Ned & Liza Weihman

Reserve Champion Market Turkeys

Adolfson & Peterson Construction, NV5 & Cunningham

Architecture

Grand Champion Meat Pen Rabbits

Cook Chevrolet, Ford and Subaru

Reserve Champion Meat Pen Rabbits

Axial Arts Architecture

SOROCO FFA Scholarship Swine

Hayden Mercantile & Mountain Valley Bank

4-H Scholarship Swine

Snyder & Counts Feed & Seed

50+ Years Buyer!

Cook Chevrolet, Subaru, Ford, 59

40+ Years Buyer

Victory Motors of Craig, 43

30+ Years Buyers

Bank of the San Juans, 37

M.J.K. Sales & Feed, 37

Mountain Meat Packing, 37

Hayden Mercantile & Ace Hardware, 36

Steamboat Ski & Resort Corp, 35

20+ Years Buyers

H Lazy P Cattle Company, 29

Mike Bell Construction, 29

T Bar G Backhoe Service & All Natural, 28

Steamboat Vet Hospital, 27

Mountain West Insurance, 26

Elk River Pet & Ranch, 23

Steamboat Motors 22

Fralick, Ross & Medora, 21

Alpine Bank, 20

Napa in Steamboat and Hayden, 20

15+ Years Buyers

Yampa Valley Bank, 19

Dawes & Associates, 19

Yampa Valley Medical Center, 18

Commercial Property Group/CJAMS Inc, 18

Bear River Valley Coop, 17

Brother's Custom Processing, 17
Souder, Don & Linda, 16
Sydney Peak Ranch, 15
Mountain Valley Bank, 15
Fair & Square Construction, 15

10+ Years Buyers

Bar-A-Ranch, 14
Precision Excavating, 14
Ski Town Rotary Club, 13
Coyote Creek Ranch, 13
Belton Livestock, 10
Button/Grimaldi/Kuntz/Mucklow/Stetson/Women, 10
Kuntz, Charlotte & Dennis, 10

5+ Years Buyers

Frontier Station, 9
McRoberts Farms, 9
Craig Powersports, 8
Steamboat Powersports, 8
Nordic Excavating, 8
Snyder & Counts Feed & Seed, 8
Jacobs ZZ, 8
THPK Accountants, 8
Montgomery's General Merchandise, 8
Booco's Contract Services/Booco Girls, 8
Pioneer Materials West Slope, 7
Schrader Propane, 7
Mason, Brett & Stephanie, 6
Elk Mountain Automotive, 6
Pet Kare Clinic, 6
Murdoch's Ranch & Home Supply, 6
Mucklow, CJ & Nancy, 6
Casey's Pond, 6
High Country Vet, 6
Yampa Valley Electric Assoc., 5
Ferrell Gas, 5
Circle Bar Ranch – Hoogendoorn, Arie, 5

Repeat 2018 Buyers

Bear Creek Animal Hospital, 4
Steamboat Storage, 4
Lucky 8 Ranch, 4
Master Petroleum, 4
Meyring, Lee, 4
Resort Land Properties LLC, 4
Rooney's Round Mountain Ranch, 4
U.S. Tractor & Harvest, 4
Weihman, Ned & Liza, 4

Xcel Energy, 4
A-1 Liquor, 3
Sathe Family, 3
Transwest Truck Trailer RV, 3
City of Steamboat Springs, 2
Cromer Contracting, 2
Calhoun, Ed & Bonny, 2
Flat Tops Electric, 2
Gates Cattle Company, 2
Grimaldi, Jackie & Larry Guss, 2
Hammer's Processing, 2
Hoogendoorn, Sharon, 2
Raindrop Pump & Well, Inc., 2
Severson Supply & Rental, 2
Sommerville, Michelle, 2
Souder, Dan & Linda, 2
Steamboat Fence & Barn, 2
Wagner Equipment Co., 2
Steamboat Resorts, 2
Yampa Valley Land Trust, 2

2018 New/Returning Buyers

Adolfson & Peterson Construction, NV5 &
Cunningham Architecture
Ager Drilling
Allbright & Gonzalez Families
Axial Arts Architecture
Bigelow, Jerry K
Brenner, Gerald
Ripley, Brian
Busby Quarter Horses
Calhoun, Ed & Bonny
Colfer Family
Colorado Haven
Craig Townsend & Cheryl Foote, Steamboat Sotheby's,
Graham & Custom Homes
Davenport, Ron & Cherri
DeFrancia & Marabou Neighbors
Ed's Excavating of Steamboat, Inc.
Eyecare Specialty
Gibbs, Megan
Hill Petroleum
Hitchcock, Steve
Marabou Neighbors
Marvin, Lore & Chad
NEI Construction
NLB Investments
Northern Lights Mgmt.
O'Neal, Shawn

ReSolve, LLC – Leslie Knutson
Rotary Club of Steamboat Springs
Saddleback Ranch
Sand Creek Enterprises, LLC
Sivon, Paul
Stagecoach Marina
Steamboat Storage
Town of Hayden
Valley Transfer, Rusty & Jessica Baker

2018 ADD-ONS

\$5,000+ Add-Ons

Busby Quarter Horses

\$1,000+ Add-Ons

Bank of the San Juans
Carol Atha
Jerry Bigelow
Colorado Group Realty Charitable Foundation
Flat Tops Electric
Glas Deffryn Ranch
Jackie Grimaldi & Larry Gus
Spike & Libby Meyring
Mountain Valley Bank
NEI Construction
Ore House
Ski Town Rotary Club
Dave & Kathy Smith
Steamboat Lions Club
Wagner Equipment Co.

\$500+ Add-Ons

Alpine Bank
American Ag Credit
Builders First Source
Colorado Haven
Stephen Downes
Elk River Pet & Ranch
Fenix Spray Foam
Kurtz Ranch
Diane & Frank May
Ashleigh Muhme
Pioneer Materials West Slope
Schrader Propane
Steamboat Hot Shots
Mike & Fran Stoltz
Superior Carpentry Inc.
Joe & Betsy Zimmerman

Additional Add-Ons
5W Cattle LLC
Dale & Becky Appel
Allen Services Unlimited
Fitz Barth
Jerry & Rosemary Barth
Case Enterprise
Lois Caster
Branch Ranch LLC
Todd & Ethna Cooper
James DeFrancia &
Marabou Neighbors
Diehl Family
Mary Ann Dowling
Steve & Pinky Downs
Del's Triangle 3 Ranch – The Heid Family
Elk Head Ranch
The Extension Crew
Flat Tops Ranch Supply
Gates Cattle Company
Gittleson Angus
Go Alpine
Jon Hamilton
Harmony Medical Services, Inc.
Joe Pierce Wildlife Photography
Bruce Johnson
Keller Law, LLC
Kody & Renee May
CJ & Nancy Mucklow
Dana & Kiva Patten
Alan Ramirez Family
Reedy Insurance
Resort Lodging Company
Brian Ripley
Virginia Rossi
Julie Rubalcaba
S—S Ranch, J. & Sarah May
Sheen Schoch
Julie Shook
Cynthia Sidwell
Ski Haus
Paul Slivon
Snider & Counts Feed & Supply
Michelle Sommerville
Karina & Nathaniel Spitzley
Stagecoach Marina & Store
Steamboat Fence & Barn
The Steamboat Group – Jon Wade

Steamboat Hair Company
 Bryan & Joni Strickland
 Superior Livestock – Justin Warren
 Ron & Pat Taylor
 Twisted Trails Running Company
 Vectra Bank
 Jody & Bobbie Vetter
 Wild Goose Coffee
 YVEA

2018 LIVESTOCK SALE DONATIONS

- Xcel Energy donated 1/2 beef to the Haven
- U.S. Tractor and Harvest donated a sheep to the Haven
- Cromer Contracting donated a pig to the Haven
- Dawes & Associates donated a 1/2 of a pig to the Haven
- The Sathe Family donated 1/2 of a pig to the Haven
- Mike Bell Construction donated a sheep to Lift Up
- City of Steamboat Springs donated a pig to the Routt County City Council on Aging
- Lore and Chad Marvin donated a goat to the Routt County City Council on Aging
- Saddleback Ranch donated a pig to Casey's Pond
- Vetra Bank donated a pig to Horizons
- McRoberts Farm donated 1/2 a beef to Horizons
- Sidney Peak Ranch donated 1/2 a beef to Horizons
- Hayden Mercantile & Ace Hardware donated 1/2 a pig to Horizons
- Mountain Valley Bank donated 1 and a 1/2 pigs to Horizons
- Mike Bell Construction donated a goat and a pig to Horizons

4-H Would Like to Thank You

Russ & Shine Atha
 Troy & Adonna Allen
 Aleigh Aurin
 Bethany Aurin
 The Bedell Family
 Lauren Beversluis
 Jamie Booco
 Donnie Bruchez
 Ed & Jody Camilletti
 Jocko & Colleen Camilletti
 Ruddy Camilletti
 Yvonne Carrouth
 The Case Family
 Barry Castagnasso
 The Clyncke Family
 Susan & Kelly Colfer
 Colorado Event Rental
 Erika Copeland
 Jessica Copeland
 Kristen & Ed Corriveau
 Cugino's Pizzeria & Italian Restaurant
 Anna Cunico
 Clarice Dean
 Barb Diehl
 Five Rivers Cattle
 Claire Fraser
 Dave Funk
 Cheryl Garrity
 Whit & Tiffany Gates
 Katherine George
 The Gonzales Family
 Scott Graves
 Chad Green
 Chad & Nikki Groce
 Hales Landscape Supply
 Susan & Kale Hart
 Danny Hayden
 Becky Heid
 Dennis & Laurie Hallenbeck
 Hayden Mercantile
 The Hawn Family
 Stacy Hayes
 Chandra Herold
 Chris and Sara Hoffman
 Lane & Jared Iacovetto

Tom & Terry Jacobs
 Dennis Kuntz
 Deb Knott
 Legacy Ranch
 Jeannie Jo Logan
 David Long
 Lysa Long
 May Family
 Ray & Barbara Manzanares
 Graig Medvesk
 Diane Merrell
 Sandy Messing
 Lee Meyring, DVM
 Spike & Libby Meyring
 CJ & Nancy Mucklow
 Ashley Muhme
 Roger & Nancy Muhme
 Erika Murphy
 Lucianne Myhre
 Rod & Raylene Olinger
 Morgan Palyo
 Tristan Palyo
 Lynn Powell Family
 Rob Quigley
 Dan Ragan
 Kristy Ragan
 Mattie Rossi
 Phillip & Belinda Rossi
 Routt County 4-H Clubs
 Routt County 4-H Council Members
 Routt County Commissioners
 Routt County Fair Board Members
 Routt County Fair Royalty
 Routt County FFA
 Routt County IS Department
 Routt County Junior Leaders
 Routt County Maintenance Department
 Routt County & Town of Hayden Law Enforcement
 Julie Rubalcaba
 Jim Schoening
 Tara & Clint Schutz
 Ingrid Scott
 Christine Shook
 Julie Shook
 Cathy Shryock
 Steamboat Veterinary Hospital

Lacy Stovner
 Hollie Sutton
 Town of Hayden
 Karin Utterback-Normann
 Arlene VanBaak
 Dean Vogelaar
 Justin Warren
 Terry Wattles
 Eric Wellman
 Jay & Shiloh Whaley
 Nancy White
 Pete Wille
 Forest Yeager
 Shari Yeager
 Kathy & Jeff Yeiser

Special Thanks to:

Resort Lodging Company for providing accommodations for our 4-H show judges. **Zirkel Wireless** for providing wireless internet at the Livestock Barn and Small Animal Barn. **High Country Shaving** for providing shavings for all the 4-H shows and livestock sale.



DIEHL BUILDERS
 CUSTOM RESIDENTIAL CONSTRUCTORS

Brady J. Diehl
 President

PO Box 775535
 Steamboat Springs, CO
 80477

Office 970.870.9694
 Cell 970.846.3102
 Fax 970.870.9502
 Email diehlbuildsit@gmail.com

FIND IT ALL UNDER ★ *One Roof*

ANIMAL HEALTH ★ FENCING
 CLOTHING ★ FOOTWEAR

*It's a way of life.
 Welcome to Murdoch's!*

LAWN & GARDEN ★ AUTO ★ TOOLS
 HARDWARE ★ PET ★ TACK

MURDOCH'S for WORK and PLAY ★ You can count on Murdoch's to help you take care of it all in one stop.

Craig, CO | 2355 West Victory Way | 970.824.4100 | murdoch.com



Deano Temple
 Owner

Excavating
 Hauling Snow Plowing
 Landsacping Foundations
 Roads

Temple Construction

970-846-8180

email: templeconst89@gmail.com

BANKING *on the go*

FOR YOUR LIFE *on the go!*



Mountain Valley Bank

Online and Mobile Banking Solutions



mvbank2go



My Mobile Money



Online Banking



iPay Bill Pay



Mobile Deposit



eStatements



Digital Wallet

www.BANKMVB.com

HAYDEN • STEAMBOAT SPRINGS • MEEKER • WALDEN

Member
FDIC

FRI-SUN, AUG 9-11

FRIDAY, AUGUST 9 EVENTS

4-H/FFA LIVESTOCK STALLING 8am (MPB)

OPEN/4-H RANCH HORSE VERSATILITY 8:30am (OA)

Superintendents: 4-H Horse Leaders

4-H rules apply. To participate all 4-H youth need to have passed their 4-H level 1 & 2 horse written tests and Western level 1 & 2 riding tests and Ranch Horse Versatility level 1 & 2 riding test. 4-H members – to be eligible for the open show awards you will need to register with and pay the open show fees.

Classes: (TBD – a combination of the below classes)

Ranch Horsemanship
Showmanship
Ranch Reining/Individual Cow Work
Ranch Trail
Cutting

Age groups for Working Ranch Horse classes (the age groups could change depending on the entries and rider ability)

8-10
11-13
14-18
Open Adult 19 & over

Open Youth (Routt County 4-H youth will be placed and awards will be given through the Routt County 4-H Extension office. Youth must designate if they are Routt County 4-H.)

OPEN HORSE SHOW FREESTYLE REINING/DRESSAGE 6pm (OA)

Sponsor: Elk River Pet and Ranch

Superintendents: Bethany Aurin, Tina Decker, Aleigh Aurin

Western and Dressage Jackpot with 75% payback
Entry fee \$25 if received by August 5. Entries will be accepted the day of the show up to one-hour prior to the show start with a \$30 late fee.

Mail entries with payment to: RCF OPEN HORSE SHOW,
PO Box 1000, Hayden, CO 81639

Freestyle reining is a competition for horses where the riders guide the horses through a precise pattern of circles, spins,

and stops. This competition is fun for all ages where the rider chooses a song and costume for rider and horse. The rider designs a reining pattern to go with their music. This is open to English and western riders of all ages.

If entries allow the divisions will be separated into adult and youth western and English, 19 and under as of January 1, 2019.

Scoring: creativity/costume/pattern = 40 points, Leads/lead line changes, 6 ads = 25 points, Stops, backing, spins = 35 points all for a total of 100 points possible.
Please call 970-846-7883 OR 970-846-7504 with any questions.

SATURDAY, AUGUST 10 EVENTS

4-H/FFA LIVESTOCK STALLING 8am (MPB)

OPEN HORSE SHOW

Sponsor: Elk River Pet and Ranch, Bear River Valley Co-op, Steamboat Lumber

Superintendents: Tina Decker, Bethany Aurin, Aleigh Aurin

For information call 970-846-7504 or 970-846-7883. The outdoor arena will be closed to any type of riding starting at 6pm Friday until the end of the RCFOHS.

High Point Awards in Each age division:

Champion English, Reserve Champion English, and 3rd runner-up English
Champion Western, Reserve Champion Western, and 3rd runner-up Western
Champion Gymkhana, Reserve Champion Gymkhana, and 3rd runner-up Gymkhana
Champion & Reserve halter awards
Youth Sportsmanship Award

Age Groups (as of January 1, 2019)

8 & Under
9 - 13
14 - 19
Adult 20-49
Adult 50+

Entry Information: Entries due (postmarked by) August 5. Entries will be accepted the day of the show up to one-hour prior to the show start with a \$30 late fee.

Mail entries with payment to: RCF OPEN HORSE SHOW, PO Box 1000, Hayden, CO 81639

Entry Fees & rules: \$5 per halter class, \$10 per riding class or three for \$20, one time office fee \$10 per person. Refunds given only with a doctor's note or veterinarian note presented prior to start of show. Class scratches/changes must be made in the morning prior to the start of the show. All fees must accompany entry form.

Stall Information and Fees: Stalls are limited! Reserve yours early. Horse stalls - \$10 per stall per day. For reservations please call the Routt County Fairgrounds office at 970-276-3068. BRING YOUR OWN SHAVINGS. Straw is not allowed. This includes 4H'ers participating in the Open Horse Show!

4-H YOUTH: If you are participating in the Open Horse Show you must pay for your stall during the RCFOHS. Your stalls for the 4-H shows do not require payment but you do need to pay for stalls for the RCFOHS. You must sign up for an Open Horse Show stall separate from the 4-H horse show.

General Rules and Regulations: Colorado 4-H Horse Rule Book & AQHA Rules Apply. Management will combine classes if there are two or fewer entries. Ribbons 1st thru 6th place. Points awarded through 6th place. Must show in a minimum of three events to qualify for High Point awards. (Example: for Western high point show in Showmanship, Western Pleasure, Western Horsemanship, Reining, Western riding, and or Trail.)

Points are figured on contestant/horse team. If entering more than one horse, each horse will receive its own number. Points given 1st= 6pts, 2nd =5pts, 3rd=4pts, 4th=3 pts, 5th= 2 pts, and 6th = 1 pt. respectively. Ties will be broken by contestant/horse team that earned points in the greatest number of events. Age is as of January 1, 2016. Halters can be used per breed of Horse for halter classes. Stallions prohibited in youth division. Halter classes DO NOT count toward High Point Awards. The gate will close for each class three minutes after the class is called into the arena. Under no circumstances may an exhibitor, parent, or spectator badger, insult or be argumentative with a judge, show secretary, ring steward or the show management. Any flagrant display may result in the exclusion of the exhibitor from competition and forfeiture of awards or expulsion from the show

grounds for the person and or exhibitor. Only members of the show staff are allowed in the announcer's booth. At any time while in the arena or on the fairgrounds a rider may be disqualified and or excused from the arena for abusing their horse, unsportsmanlike conduct, lack of control or any unsafe situations for either themselves or for others.

Routt County Fair Open Horse show Gymkhana additional rules: 4-H RULES APPLY; it is mandatory that HELMETS MUST BE WORN by contestants under 18 when participating in the gymkhana.

You will be disqualified and receive a no-time for the following: 1. Breaking pattern, 2. Breaking the Timer during your run. 3. Dropping the flag during the flag race, knocking the bucket/barrel over or hitting your horse with the flag. 4. Excessive punishment of a horse at any time shall result in disqualification for the duration of the Gymkhana. At any time while in the arena or on the fairgrounds a rider may be disqualified and or excused from the arena for abusing their horse, unsportsmanlike conduct, lack of control or any unsafe situations for either themselves or for others. Due to safety, running horses through the entry/exit gate will not be allowed. Violators may, or may not, be given a warning before being disqualified, depending on the severity of the violation. When entering and exiting the arena, contestants must have their horse under control and proceed at a walk through the entry/exit gate(s). No spectator, horses or riders shall stand within 30 feet of the entry gate, except the gate keeper. This area is for horses entering and exiting the arena. The only horse /riders allowed in the waiting area is that age group that is competing at that time.

Contestants are allowed some assistance when entering the arena, providing it is accomplished in a safe manner. Parents or guardians need to assist their children. It is NOT the RCFOHS staff's responsibility to assist contestants. Excessive force or time will not be permitted. The current rider up must enter the arena within 60 seconds of being called or forfeit his/her turn. Riders may circle once in the arena before making their run. Only members of the Gymkhana/show staff are allowed in the announcer's booth.

In case of a timer failure on a good qualified run, the contestant will be given a re-ride. The contestant can run again immediately or choose to run the re-ride at the end of their age group.

FRI-SUN, AUG 9-11

Saturday 9am (OA) Showmanship

50 and older
20-49
14-19
9-13
8 and younger

Halter Classes:

Weanling
2-6 year old geldings
6 and older geldings
2-6 year old mares
6 and older mares
Grand & Reserve Overall Champion

English Classes

Hunter Hack 20 and older
Hunter Hack 14-19
Hunter Hack 9-13
Hunter Hack 8 and under

Hunter Under Saddle 20 and older
Hunter Under Saddle 14-19
Hunter Under Saddle 9-13
Hunter Under Saddle 8 and under

Junior Hunter Seat Equitation – horses 5 years and younger
Hunter Seat Equitation 20 and older
Hunter Seat Equitation 14-19
Hunter Seat Equitation 9-13
Hunter Seat Equitation 8 and under

Saturday after lunch

Western

Junior Western Pleasure – horse 5 years and younger
Western Pleasure 50 and older
Western Pleasure 20-49
Western Pleasure 14-19
Western Pleasure 9-13
Western Pleasure 8 and under

Western Horsemanship 50 and older
Western Horsemanship 20-49
Western Horsemanship 14-19
Western Horsemanship 9-13
Western Horsemanship 8 and under
(Open Horse Show continues Sunday)

SADDLE FITTING DEMONSTRATION 4pm (T)

HORSE SHOE PITCHING CONTEST

5pm (F) (registration at 4:30pm)

Superintendent: Routt County Fair Royalty

Classes:

Division One: Play for Fun – You Lose – You are done. \$25 per team
Division Two: Community Team – Round Robin Elimination. \$25 per team
Division Three: Business Team – Round Robin Elimination. \$40 per team

Sign-up and bracketing start at 4:30 at the Horse Shoe Pit Arena, east of the multi-purpose building. Rules: Format will follow the National Horse Shoe Pitching Association Guidelines, but will not be a sanctioned event.

RANCH SORTING

6pm (OA)

Superintendent: Lane Iacovetto

SUNDAY, AUGUST 11 EVENTS

4-H/FFA LIVESTOCK STALLING

8am (MPB)

OPEN HORSE SHOW CONT.

9am (OA)

Western Reining 50 and older

Western Reining 20-49

Western Reining 14-19

Western Reining 9-13

Western Reining 8 and under

Western Riding 50 and older

Western Riding 20-49

Western Riding 14-19

Western Riding 9-13

Western Riding 8 and under

Lunch Break

Gymkhana Events

Cowboy hat not required for speed events, 4-H rules apply and pattern sizes except for barrels. Barrels will be a high school rodeo pattern. In accordance with Colorado 4-H

FRI-SUN, AUG 9-11

rules: Youth 18 & under must wear a helmet when participating in a Gymkhana event.

Routt County Fair Open Horse Show Gymkhana additional rules: You will be disqualified and receive a no-time for the following: 1. Breaking pattern, 2. Breaking the Timer during your run. 3. during the flag race: Dropping the flag during the flag race, knocking the bucket/barrel over or hitting your horse with the flag. 4. Excessive punishment of a horse at any time shall result in disqualification for the duration of the Gymkhana. At any time while in the arena or on the fairgrounds a rider may be disqualified and or excused from the arena for abusing their horse, unsportsmanlike conduct, lack of control or any unsafe situations for either themselves or for others.

Due to safety running horses through the entry/exit gate will not be allowed. Violators may, or may not, be given a warning before being disqualified, depending on the severity of the violation. When entering and exiting the arena, contestants must have their horse under control and proceed at a walk through the entry/exit gate(s) No spectator, horses or riders shall stand within 30 feet of the entry gate, except the gate keeper. This area is for horses entering and exiting the arena. The only horse /riders allowed in the waiting area is that age group that is competing at that time.

Contestants are allowed some assistance when entering the arena, providing it is accomplished in a safe manner. Parents or guardians need to assist their children. It is NOT the RCFOHS staff's responsibility to assist contestants. Excessive force or time will not be permitted. The current rider up must enter the arena within 60 seconds of being called or forfeit his/her turn. Riders may circle once in the arena before making their run. Only members of the Gymkhana/show staff are allowed in the announcer's booth In case of a timer failure on a good qualified run, the contestant will be given a re-ride. The contestant can run again immediately or choose to run the re-ride at the end of their age group.

In the event of a tie, the tie will be broken by the fastest combined time of all the Gymkhana events entered by that rider/horse in the given age group.

Western and gymkhana high point awards follow conclusion of show.

Barrel Racing 50 and older
Barrel Racing 20-49
Barrel Racing 14-19

Barrel Racing 9-13
Barrel Racing 8 and under

Pole Bending 50 and older
Pole Bending 20-49
Pole Bending 14-19
Pole Bending 9-13
Pole Bending 8 and under
Stake Race 50 and older
Stake Race 20-49
Stake Race 14-19
Stake Race 9-13
Stake Race 8 and under

Award Ceremony takes place inside the Exhibit Hall 30 minutes following the completion of the gymkhana.

Pioneer Materials West

Thank you for purchasing my
2018 Market Swine

Thank you for bumping up my 2018 Market
Swine Sale price:

Rosemary & Gerry Barth
Fitz Barth

James DeFrancia & Marabou Neighbors
The Heid Family & Del's Triangle 3 Ranch
Elk River Pet and Ranch
Karina & Nathan Spitzley

Thank you to Shane and Forest Yeager, The
Hahn Family and Elk River Automotive for
your support and encouragement

Quinlann Yeager ~ Elk River Wranglers

Thank
You



*The Routt County Fair
Cookbook Committee
appreciates your generosity!*



All proceeds from cookbook sales go directly to improvements of the Exhibit Hall.

MONDAY, AUGUST 12

MONDAY, AUGUST 12 EVENTS

4-H/FFA LIVESTOCK STALLING

8am (MPB)

4-H WESTERN HORSE SHOW

9am (OA)

**4-H Superintendents: Lucianne Myhre, Kristy Ragan,
Kathy Yeiser**

*Show order may not be the same as listed in the Fair Book. Show order is decided by the Superintendents and the judge. The show order will be posted the morning of the show.

Showmanship & Halter Classes

Senior Showmanship

Intermediate Showmanship

Junior Showmanship

Yearling Geldings

2-4 Year old Geldings

5-10 Year old Geldings

10+ aged Geldings

Pony Geldings

Grand Champion Gelding

Yearling Mares

2-4 Year old Mares

5-10 Year old Mares

10 + aged Mares

Pony Mares

Grand Champion Mare

Overall Grand Champion Halter Horse

Breeding Classes

Mares foaled or bred in 2018

Mare and 2018 Foal

Foals of 2017

Foals of 2016

Grand & Reserve Champion Breeding Horse

Western Performance Classes

Senior Horsemanship

Intermediate Horsemanship

Junior Horsemanship

Senior Reining

Intermediate Reining

Junior Reining

Senior Western Riding

Intermediate Western Riding

Junior Western Riding

Senior Trail

Intermediate Trail

Junior Trail

Senior Western Pleasure

Intermediate Western Pleasure

Junior Western Pleasure

4-H ROPING

6pm (OA)

4-H Superintendent: Spike Meyring



Steamboat Rapid Care – No Waiting

Family Medicine Walk-In Clinic

All insurance, including Medicare
and Medicaid, accepted

Mon - Sat, 7:30 am - 7:30 pm

No appointment necessary!

Rapid + Care
MEMORIAL REGIONAL HEALTH

2201 Curve Plaza, Unit A-101
(behind Mountain Valley Bank, next to Ace Hardware)

970-826-8440

memorialregionalhealth.com



TUESDAY, AUGUST 13

TUESDAY, AUGUST 13 EVENTS

4-H/FFA LIVESTOCK STALLING 8am (MPB)

4-H DOG SHOW 8am 4-H Dog Show check-in (F) 8:30am 4-H Dog Show (F)

4-H Superintendents: Cathy Shryock, Barb Clark

Open to all 4-H members who have participated in the dog project for the current year. Only the dogs showing may be allowed in the staging or viewing areas. Dogs must be on a leash at all times except when showing.

Dogs not entered in an event are not permitted at the show site.

Dog Show Classes:

Obedience
Showmanship
Rally
Agility

4-H ENGLISH HORSE SHOW 9am (OA)

4-H Superintendents: Lucianne Myhre, Kristy Ragan, Kathy Yeiser

*Show order may not be the same as listed in the Fair Book. Show order is decided by the Superintendents and the judge. The show order will be posted before of the show.

English Performance Classes

Senior Pleasure
Intermediate English Pleasure
Junior English Pleasure

Senior English Equitation
Intermediate English Equitation
Junior English Equitation

Senior Hunter Hack
Intermediate Hunter Hack
Junior Hunter Hack

4-H GYMKHANA 12pm (OA)

4-H Superintendents: Lucianne Myhre, Kristy Ragan, Kathy Yeiser

Senior Barrels
Intermediate Barrels
Junior Barrels

Senior Poles
Intermediate Poles
Junior Poles

Senior Flags
Intermediate Flags
Junior Flags

Senior Keyhole
Intermediate Keyhole
Junior Keyhole

Senior Musical Mounting
Intermediate Musical Mounting
Junior Ride Musical Mounting

Senior Bareback Dollar Bill Race
Intermediate Bareback Dollar Bill Race
Junior Bareback Dollar Bill Race

4-H/FFA RABBIT & POULTRY CHECK-IN 12pm (SAB)

4-H/FFA SWINE WEIGH-IN 6pm (MPB)

DANCE FOR 4-H/FFA MEMBERS 8pm (MPB) follows swine weigh-in



PET KARE CLINIC
Paige Lorimer, DVM-CVA
Susan Colfer, DVM
Cindi Hillemeyer, DVM
Chris Schwarz, DVM
Samantha Hollingshead, DVM-CVA

Office & House-calls with 24/7 Emergency Service:
(970) 879-5273

102 Anglers Drive
P.O. Box 881295
Steamboat Springs, CO 80488

www.petkareclinic.com
mail@petkareclinic.com
Fax: (970) 797-6890





POLARIS®



Warning: Polaris off-road vehicles can be hazardous to operate and are not intended for on-road use. Driver must be at least 16 years old with a valid driver's license to operate. Passengers, if permitted, must be at least 12 years old. All riders should always wear helmets, eye protection, and protective clothing. Always use seat belts and cab nets or doors (as equipped). Never engage in stunt driving, and avoid excessive speeds and sharp turns. Riding and alcohol/drugs don't mix. All riders should take a safety training course. Call 800-342-3764 for additional information. Check local laws before riding on trails. © 2019 Polaris Industries Inc.



Craig's Powersports opened in 1999. Just as it was then, our goal is to be the most courteous and professional powersports dealer in Colorado. As a result, we have become one of the state's largest side x side dealer! Give us a call or come on in and let us help you in the snow, on the trail, or on the road!

**WE ARE OPEN 8:30am - 5:30pm Tue-Fri 8:30 - 3:00pm Saturday
WWW.CRAIGPOWERSPORTS.COM**


970-826-0060

DO [Real] COLORADO



HAYDENCOLORADO.COM





THERE'S A LOT MORE
THAN MONEY ON YOUR
PERSONAL BALANCE SHEET.

Banking is about more than managing your money. It's about maximizing the opportunities in life to strengthen and protect the people, places and causes important to you. Call, click, or stop by Vectra Bank today. We are here to help you make the most of what you've worked so hard to achieve.

VECTRA BANK IS PROUD TO SUPPORT THE TRADITION,
AND EXCITEMENT, OF THE ROUTT COUNTY FAIR.

vectrabank.com
970.871.4424

Big Enough To Count / Small Enough To Care

VECTRABANK[®]
COLORADO

A division of Zions Bancorporation, N.A. Member FDIC

WEDNESDAY, AUGUST 14 EVENTS

BALED HAY CONTEST

Superintendent: Todd Hagenbuch

The baled hay contest is based on laboratory analysis only. The type of bale is not important. **DO NOT BRING YOUR HAY TO THE FAIRGROUNDS.** To enter, contact the CSU Routt County Extension office by 5pm on Monday, August 5 at (970) 879-0825. An Extension agent will make arrangements to visit your location and pull a sample of your hay. Hay must have been grown in Routt County during the 2019 growing season. Placings will be calculated and posted at the Fair during Fair week. Entrants will receive a copy of their own test results.

Entry cost is \$30 per sample (to offset the cost of analysis). First place in each category receives their entry fee back.

Classes

BH001 Grass- Irrigated
BH002 Grass- Dryland
BH003 Alfalfa- 1st Cutting
BH004 Alfalfa- 2nd Cutting

4-H/FFA POULTRY SHOW

8am (SAB)

Superintendents: Roger & Nancy Muhme, Diane Merrell

BBQ Special Chickens (3 same sex & breed)
Standard Chicken
Bantams
Game Birds
BBQ Special Turkeys (pair of same sex and breed)
Turkeys
Meat Pen Ducks (Pair of same sex and breed)
Ducks
Meat Pen Geese (pair of same sex and breed)
Geese

Birds may not compete in both single and pen/market classes. Pair and Pen entries must be the same breed and variety. Birds may not compete in both the 4-H and Open Shows. After check-in on Tuesday, all 4-H/FFA birds must remain at the fairgrounds until Sunday unless

released by Superintendent for cause. Checkout is Sunday morning by noon.

All birds will be leg banded for the purposes of identification and judging. Do not enter birds that have been vaccinated for a contagious disease within 30 days of fair. All birds must be clean and healthy. Birds suffering from any disease or parasite will be refused entry.

Classes will be set according to the American Poultry Association show rules for the following species: Chicken, Bantam, Game Birds, Turkeys, Geese and Ducks. Pens and pairs will also be allowed.

The following definitions govern entries:

Cock, Old Gander, Old Tom, Old Drake – male bird more than one year

Cockerel, Young Gander, Young Tom, Young Drake – male bird less than one year

Hen, Old Goose, Old Hen, Old Duck – female bird more than one year

Pullet, Young Goose, Young Hen, Young Duck – female bird less than one year

Pen – one male chicken and two female chickens of the same breed and variety (chickens only)

Pair – one male bird and one female bird of the same breed and variety (not chickens)

OPEN POULTRY SHOW

Immediately following 4-H/FFA Poultry Show (SAB)

No exhibitor may have more than two entries in a class. Classes may be added for an unlisted breed. A class consists of: one old pen, one young pen, one single cockerel, one single pullet, one cock (one year or more), one hen (one year or more). Open Poultry exhibits (except for 4-H minis) are brought the day of the show and taken home. They are not caged at the fairgrounds. Birds may NOT compete in both 4-H and Open Shows.

Birds may not compete in both single and pen classes. Pigeon pair entries must be the same breed.

The following definitions govern entries:

Cock - male bird more than one year

Cockerel - male bird less than a year

WEDNESDAY, AUGUST 14

Hen - female bird more than one year
Pullet - female bird less than a year
Young Pen - one cockerel and two pullets
Ducks & Geese young (one year and under)
Ducks & Geese old (over one year)

Open Poultry Classes:

Chickens
Ducks
Turkeys
Pigeons

4-H/FFA SHEEP & GOAT WEIGH-IN 10am (MPB)

Sheep and Goats must be ready to weigh-in at 10am

4-H/FFA STEER WEIGH-IN

11:30am (following Sheep/Goat weigh-in) (MPB)

****NOTE:** MPB will be CLOSED to public during steer weigh-in for safety purposes.

HOME ARTS CHECK-IN 1-8pm (EH)

Only Routt County residents are eligible.

Sponsors: Bear River Valley Co-op; Cook Chevrolet & Subaru, & Ford; Rapid Care Steamboat; Town of Hayden; Yampa Valley Electric Association
Superintendent: Linda Long

**NO EXHIBIT MAY BE REMOVED BEFORE 2PM
ON SUNDAY**

EXHIBITS ARE ONLY RELEASED ON SUNDAY

FROM 2-6pm. Age groups, classes and divisions can be changed at the discretion of the superintendent. Age Group Divisions (not all age groups are available in each class), must be designated on the entry blank:

Mommy/Daddy & Me (3-7)
Junior (8-12)
Teen (13-19)
Adult (20-60)
Adult Plus (61-75)
Senior (76-84)

Senior Plus (85 years and older)

Professional (any exhibitor having sold over \$300 worth of work, or professional by trade unless otherwise specified in divisions)

ENTRY and RELEASE RULES: Unless otherwise specified under the appropriate Division throughout the Fair book, **ENTRIES WILL BE RELEASED SUNDAY, AUGUST 18, FROM 2-6 PM ONLY.** Department Superintendents will accept, enter and place exhibits. Tag receipts **MUST** be presented during checkout time (2-6 pm ONLY). Failure to abide by the rules will disqualify an entry. Violators will be evicted.

Please use a separate entry tag for each item. Exhibitors may compete in as many classes as desired. Articles must be exhibited under the name of the maker who must currently live in Routt County and never have exhibited the same item in a previous Fair. Products exhibited in field crops, flowers, baked, canned, farm and dried products must have been grown or prepared locally during the current calendar year; clothing, needlework, crafts/hobbies and art must have been completed in the past year. Special classes may be created at the discretion of the superintendents and judges may combine championship categories. Judges decisions are final.

Specific departmental guidelines, rules, and display requirements must be adhered to or the entry will be automatically disqualified.

Eligibility: All home arts exhibits are open to Routt County residents only (Routt County second-home owners are considered residents and are eligible). No exceptions.

Premiums: First-place receives a premium of \$1. Ribbons are awarded in each Division for first (blue), second (red), third place (white) and honorable mention, Champion and Reserve Champion, Grand Champion and Reserve Grand Champion. Some departments have special awards; please refer to specific departments for details. After 6pm on Sunday all premiums are forfeited.

-HOW TO ENTER YOUR HOME ARTS-

"I have some potatoes I want to enter in the Fair. How do I do that?"

Look in the Fair book under Vegetables & Crops. Read the rules and decide what age group you fit in and make sure you meet the exhibition requirements (plate, bag, etc.). Then within Vegetables & Crops look for the Potato section and decide which category your potatoes fit in. Are they red, white, russet, sweet, etc. Make sure you read any special instructions for exhibiting your particular potato (most potato categories require four potatoes on a plate).

Then, on Wednesday, August 14, sometime between 1pm and 8pm bring your potatoes and information to the Routt County Fairgrounds Exhibit Hall in Hayden. When you walk in the building find the Vegetables & Crops department, there will be plenty of people to help you. Meet with the Superintendent of Vegetables & Crops, give her your potatoes and fill out the entry tag.

Judging is Thursday, August 15. Routt County has open judging which means you are welcome and encouraged to be present and watch the judges at work! Ribbons and placings will be displayed as soon as the judge is finished on Thursday.

On Sunday, August 18 between 2 and 6 pm (not before and not after) you should pick up your potatoes, ribbon and premium, if any, (blue ribbons get \$1). AFTER 6PM ALL PREMIUMS ARE FORFEITED. All items left after 6pm on Sunday without prior arrangements, become property of the Routt County Fair and may be disposed of as the fairgrounds does not have storage space for such items.

SPECIAL HOME ARTS AWARDS

Superintendents Award: An award will be given to the most outstanding exhibit in the Exhibit Hall. It can be from any department and any age group.

Helen Sherrod Outstanding Home Artist Award: An award will be given to the adult or senior exhibitor who acquires the largest number of Blue, Champion and Reserve Champion Ribbons in the Home Arts Exhibits.

2018 Winner – Nancy Mucklow

Judges Choice Award: One Judges Choice Award per department. Simply, the judge's favorite entry.

ART

Superintendent: Nita Naugle, Rita Herold

Age Groups: Mommy/Daddy & Me, 1-4 years, 5-7 years, Junior, Teen, Adult, Adult Plus, Senior, Senior Plus, Pro. 2 entries/numbered category

Grand Champion and Reserve Grand Champion ribbons may be awarded in each division and age category. Judges may elect to award Honorable Mention ribbons. Only original ideas are classified as art; items made from a kit should be entered as Crafts/Hobbies. Pictures will only be exhibited if they are ready to hang.

Division A

Category 1

- A000- Oil Pastels
- A001- Chalk Pastels
- A002- Chalk
- A003- Pencil Drawings- animal
- A004- Pencil Drawings- landscape
- A005- Pencil Drawing- portrait
- A006- Pencil Drawings- open
- A007- Charcoals
- A008- Colored Pencil- animal
- A009- Colored Pencil- landscape
- A010- Colored Pencil- open
- A011- Pen & Ink
- A012- Marker
- A013- Crayon
- A014- Mixed Media
- A015- Open

Category 2

- A020- Oils- animal
- A021- Oils- landscape
- A022- Oils- portrait
- A023- Oils- open
- A024- Watercolor- animal
- A025- Watercolor- landscape
- A026- Watercolor- portrait

WEDNESDAY, AUGUST 14

A027- Watercolor- open
A028- Acrylics- animal
A029- Acrylics- landscape
A030- Acrylics- portrait
A031- Acrylics- open
A032- Tempera paint
A033- Spray paint or Airbrush
A034- Open

Category 3

A040- Prints from block/carving/sponge
A041- Prints from fish, leaves, nature
A042- Scratch Board
A043- Collage
A044- Multi-media
A045- Batik -original

Division B

Category 1

A050- Horsehair
A051- Rawhide
A052- Copper & Tin Punch
A053- Basket Weaving
A054- Open

Category 2

A060- Jewelry- bracelets original work
A061- Jewelry- necklaces original work
A062- Jewelry- pendants original work
A063- Jewelry- sets original work
A064- Jewelry- open original work

Category 3

A070- Poetry- original work
A071- Stories- original work
A072- Illustrated poetry or stories
A073- Cards- original work
A074- Art inspired from photo (include reference)
A075- Open

Category 4

A080- String Art
A081- Wood Carving
A082- Wood Burning
A083- Sand Art
A084- Metal Art

A085- Fiber/ Material Art- original
A086- Stained Glass- window
A087- Stained Glass- lamps
A088- Stained Glass- miscellaneous
A089- Open

Category 5

A095- Painting- metal
A096- Painting- wood
A097- Painting - glass
A098- Painting- gourds
A099- Painting- open
A100- Bone & skull- pen and ink
A101- Bone & skull- oil /acrylic
A102- Scrimshaw
A103- Open

Division C (3-Dimensional)

Category 1

A110- Sculpture- clay
A111- Sculpture- modeling clay
A112- Sculpture- bread dough
A113- Sculpture- paper
A114- Sculpture- wax
A115- Sculpture- open

Category 2

A120- Sculpture- metal (metal work)
A121- Sculpture- leather
A122- Sculpture- plastic
A123- Sculpture- wood
A124- Sculpture-glass
A125- Sculpture- mixed media
A126- Sculpture-open

BAKED PRODUCTS

Superintendents: Charlene Barnes, Mary Valora, Janie Jazwick, Lyla Backes

Age Groups: Junior, Teen, Adult, Adult Plus, Senior, Senior Plus, Pro. Mommy/Daddy & Me division for cookies, brownies, cupcakes and decorated cakes ONLY. 2 entries/numbered category

Premiums: Grand Champion and Reserve Grand Champion ribbons may be awarded in each division and age category.

Display Rules: Bring food items on sturdy paper plates and/or covered heavy cardboard in a zipper-locked bag for display of food exhibit when possible. See each category for more specific display instructions. Uncut pies must be in a disposable pie pan and uncut. CUPCAKE LINERS ARE ONLY ALLOWED ON CUPCAKES (no exceptions, not even muffins). Breads must be exhibited as a whole loaf. They will be judged on texture (35%), flavor (35%) and appearance (30%).

NEW in 2019 - TASTE OF THE FAIR BAKE SALE Friday at 5pm.

When you whip up your batch of baked anything for your fair entry, make an extra plate for the "Taste of the Fair Bake Sale"!

Bake Sale donations will be accepted for TASTE OF THE FAIR on Wednesday from 1-8pm and on Friday from 4:30-4:55pm at the Exhibit Hall. BRING AN EXTRA BUNCH OF YOUR BAKED GOODS FAIR ENTRIES (think cookies, cakes, pies, brownies, anything bake sale yummy!) and we'll trade these donated goods for a "donation" on Friday at the TASTE OF THE FAIR. Proceeds go to the Routt County Fair Cookbook Committee and help support prizes awarded in each category in the Routt County Fair Exhibit Hall Open Show. The committee also uses proceeds for Exhibit Hall improvements!

DIVISION A - BREADS

Breads must be exhibited as a WHOLE LOAF

Category 1 - Quick Breads (no yeast, plate of 4 where applicable)

- B001 Quick-baking powder biscuits, (4)
- B002 Quick-zucchini bread (loaf)
- B003 Quick-fruit bread (loaf)
- B004 Quick-banana bread (loaf)
- B005 Quick-coffee cake (loaf)
- B006 Quick-corn bread or sticks (4 slices)
- B007 Quick-muffins (4)
- B008 Quick-pumpkin (loaf)
- B009 Quick-Tortillas (4)
- B010 Quick-special diet
- B011 Quick-scones (4)
- B012 Quick-other

Category 2 - Sourdough (plate of 4 where applicable)

- B016 Sour-bread (loaf)
- B017 Sour-cakes
- B018 Sour-cookies (4)
- B019 Sour-doughnuts (4)
- B020 Sour-biscuits (4)
- B021 Sour-banana bread (loaf)
- B022 Sour-special diet
- B023 Sour-open

Category 3 - Yeast (plate of 4 where applicable)

- B026 Yeast-loaf white bread
- B027 Yeast-loaf whole-wheat bread
- B028 Yeast-dinner rolls (4)
- B029 Yeast-whole wheat-dinner rolls (4)
- B030 Yeast-raised doughnuts (4)
- B031 Yeast-cinnamon rolls (4)
- B032 Yeast-loaf rye bread (loaf)
- B033 Yeast-batter yeast bread (loaf)
- B034 Yeast-other yeast bread
- B035 Yeast-cROUTONS
- B036 Yeast-special diet
- B037 Yeast-open

Category 4 - Bread Machine Made

- B040 BMM White Yeast
- B041 BMM Whole Wheat Yeast
- B042 BMM Other Yeast

DIVISION B

Category 1 - Candies (Four pieces should be submitted on a sturdy paper plate and inserted in a plastic bag.)

- B045 Candy-brittles
- B046 Candy-divinity
- B047 Candy-fudge
- B048 Candy-undipped mints
- B049 Candy-dipped mints
- B050 Candy-dipped candies
- B051 Candy-popcorn balls
- B052 Candy-other
- B053 Candy-special diet
- B054 Candy-open

Category 2 - Cookies (Four cookies should be submitted on a sturdy paper plate and inserted in a plastic bag.) They will be judged on texture (35%), flavor (35%) and

WEDNESDAY, AUGUST 14

appearance (30%).

B055 Cookies-oatmeal

B056 Cookies-brownies

B057 Cookies-iced brownies

B058 Cookies-chocolate chip drop

B059 Cookies-refrigerator

B060 Cookies-peanut butter

B061 Cookies-sugar

B062 Cookies-unbaked

B063 Cookies-short bread

B064 Cookies-special diet

B065 Cookies-open

Category 3 - Microwave Baking

B067 Micro-cake

B068 Micro-brownies

B069 Micro-pie

B070 Micro-candy

B071 Micro-quick bread

B072 Micro-muffins

B073 Micro-other

B074 Micro-special diet

Category 4 - Bar Cookies

B075 Bar Cookies-chocolate

B076 Bar Cookies-fruit

B077 Bar Cookies-spice

B078 Bar Cookies-special diet

B079 Bar Cookies-open

Category 5 - Miscellaneous

B080 Misc. Granola Loose

B081 Misc. Granola Bar

B082 Misc. Granola Other

DIVISION C - CAKES/PASTRY

Cakes should be placed on a very firm, disposable surface (foam core, strong cardboard, plywood, particle board, etc.), cut parallel to the shape of the cake and must be 1.5-inches on each side from the base of the border, not the cake. The surface should be covered. Freezer paper is not advised because it absorbs grease. The cake board must be covered with a food safe material, such as aluminum foil. If you use decorative or gift wrap paper or fabric, it must be covered in food quality plastic wrap. Cakes may be frosted or unfrosted. Only one 8-inch or 9-inch

layer of a butter cake should be exhibited. Cakes will be scored on texture (35%), flavor (35%), and appearance (30%). Butterless cakes will be judged on flavor (40%), crumbs (40%), appearance (15%), and texture (5%).

Category 1 - Decorated Cake

Icing may be applied to a non-edible form in all classes with the exception of edible decorated cakes, which must be edible.

B083 Decorated-any edible

B084 Decorated-birthday

B085 Decorated-special occasion

B086 Decorated-wedding

B087 Decorated-special diet

B088 Decorated-open

B089 Decorated Cupcakes

Category 2 - Scratch Cake

B090 Scratch-white/egg only

B091 Scratch-yellow

B092 Scratch-chocolate

B093 Scratch-spice

B094 Scratch-angel food

B095 Scratch-pound

B096 Scratch-butter

B097 Scratch-bundt

B098 Scratch-sponge

B099 Scratch-cheese cake baked

B100 Scratch-cheese cake unbaked

B101 Cupcakes (6 total)

B102 Scratch-other

B103 Scratch-special diet

B104 Scratch-open

Category 3 - Mix Cake Made from a prepackaged mix.

B106 Mix Cake-fruit

B107 Mix Cake-spice

B108 Mix Cake-special diet

B109 Mix Cake-open

Category 4 - Pastry

Pies must be whole in a disposable pan and uncut. Classes will be developed to reflect entries. Refrigeration is available for perishable items. Plate of 3 where applicable.

B110 Pastry-fruit pie

- B111 Pastry-cream pie
- B112 Pastry-walnut or pecan pie
- B113 Pastry-other pie
- B114 Pastry-cream puffs
- B115 Pastry-maple bars
- B116 Pastry-popovers
- B117 Pastry-fruit tarts
- B118 Pastry-danish
- B119 Pastry-cobbler
- B120 Pastry-special diet
- B121 Pastry-open

CANNED GOODS

Superintendent: Nancy Mucklow, Tegan Anderson, Jody Camilletti

Age Groups: Jr/Teen, Adult, Adult Plus, Senior, Senior Plus, Pro

2 entries/numbered category

1. All canned and jellied products must include the following information on the label (blank labels will be available at the Fair): - name of product -method of preparation (type syrup, type pack, any additional ingredients added) as applies to product canned -method of processing (i.e., pressure canner, water bath) and pounds of pressure used if food was pressure canned -elevation at which processing was done-exact processing time-date processed -**RECIPE STRONGLY RECOMMENDED** - **REMEMBER TO ADD ALTITUDE ADJUSTMENT TIME TO RECIPE YOU ARE PREPARING.** See Altitude Chart below. (Example: Recipe calls for 5 minutes processing time. For 6001-8000 feet, add 15 minutes to processing time = 20 minutes total processing time). Recipe info can be included on the information label or attached as a separate label, but should be attached to the product because of food safety concerns.

Sample Label	
ROUTT COUNTY FAIR HOME PRESERVATION	
Name of Product:	Pears
Source of Recipe:	Ball Blue Book
Method of Preparation:	Hot Pack
Method of Processing:	Water Bath
Altitude:	6536
Processing Time:	20 Minutes
Pounds of Pressure:	
Date Canned or Dried:	7-30-19

2. Jellied products and Other Canned products must be displayed in U.S. standard jar (i.e, Ball, Kerr). Two-piece matching lids must be used.

3. Acceptable canning methods include pressure canned or hot water bath. It may be necessary to open home canned food entries to inspect for judging purposes. Judges will use their own discretion as to whether or not they will open and taste canned products. Directions for different methods are available from the Routt County Extension office and local libraries. Products with parafin (wax) seals will not be accepted.

4. Including the recipe is beneficial.

5. Head space (the unfilled jar space above the food and below its lid) should be 1/4 inch for jams and jellies; 1/2 inch for fruit, pickles and tomatoes processed in hot-water bath; and 1 to 1 1/4 inch for low acid foods, vegetables, meats, etc. processed in a pressure canner.

ALTITUDE CHART		
For Boiling Water Processing		
If you are preserving at an altitude higher than 1,000 feet above sea level, adjust boiling water processing time as indicated.	Altitude Feet	Increase Processing Time
	1,001-3,000	5 minutes
	3,001-6,000	10 minutes
	6,001-8,000	15 minutes
	8,001-10,000	20 minutes

DIVISION A: FRUITS AND VEGETABLES

Judging for fruits, vegetables, meat, fish and soups is based on appearance 50% (for natural color, uniform pieces, quality product canned in appropriate and food safe conditions, clear liquid); pack 40% (for well-spaced, attractive, uniform pieces, proper head space); and container 10% (for a perfect seal, complete label including recipe reference, sparkling jar).

Category 1 - Fruit

- C001 Fruit-apricots
- C002 Fruit-apples
- C003 Fruit-applesauce
- C004 Fruit-cherries-sour
- C005 Fruit-cherries-sweet

WEDNESDAY, AUGUST 14

C006 Fruit-fruit cocktail
C007 Fruit-gooseberries
C008 Fruit-peaches-whole
C009 Fruit-peaches-sliced
C010 Fruit-pears
C011 Fruit-plums
C012 Fruit-raspberries
C013 Fruit-rhubarb
C014 Fruit-strawberries
C015 Fruit-juice
C016 Fruit-pie filling
C017 Fruit- miscellaneous
C018 Fruit-chutney
C019 Fruit-open

Category 2 - Meat & Fish

C021 Meat & Fish-beef
C022 Meat & Fish-poultry
C023 Meat & Fish-trout
C024 Meat & Fish- mincemeat
C025 Meat & Fish- wild game
C026 Meat & Fish- miscellaneous
C027 Meat & Fish-open

Category 3 - Soup

C031 Soup-meat
C032 Soup- vegetable
C033 Soup- miscellaneous
C034 Soup-open

Category 4 - Vegetables

C036 Veg-beets
C037 Veg-beans-green
C038 Veg-beans
C039 Veg-carrots
C040 Veg-corn
C041 Veg-tomatoes-whole
C042 Veg-tomatoes-pieces
C043 Veg-tomato sauce
C044 Veg-vegetable juice (V-8 type)
C045 Veg-miscellaneous
C046 Veg-open

Category 5 - Pickled and Spiced Products

Judging is based upon appearance 40% (even color,

uniform pieces and texture, sparkling jar), quality of fruit and vegetables 30% (quality product canned in appropriate and food safe conditions, condition of finished product, perfect seal), pack 25% (neatness, liquid cover, proper head space) and complete label and recipe reference 5%.

C051 Pickle/Spice-beets
C052 Pickle/Spice-B&B cucumber
C053 Pickle/Spice-dill cucumber
C054 Pickle/Spice-sweet cucumber
C055 Pickle/Spice-misc. cucumber
C056 Pickle/Spice-tomato-dill
C057 Pickle/Spice-tomato-sweet
C058 Pickle/Spice-zucchini-dill
C059 Pickle/Spice-misc. vegetable
C060 Pickle/Spice-misc. fruit
C061 Pickle/Spice-peppers
C062 Pickle/Spice-tomato catsup
C063 Pickle/Spice-dilled beans
C064 Pickle/Spice-misc. chutney
C065 Pickle/Spice-dill relish
C066 Pickle/Spice-sweet relish
C067 Pickle/Spice-misc. relish
C068 Pickle/Spice-chili sauce
C069 Pickle/Spice-misc. sauce
C070 Pickle/Spice-crabapples
C071 Pickle/Spice-sauerkraut
C072 Pickle/Spice-vinegar, homemade
C073 Pickle/Spice-vinegar, herbed
C074 Pickle/Spice-salsa, processed
C075 Pickle/Spice-salsa, refrigerated
C076 Pickle/Spice-open

Category 6 - Fermented or Brined Products

This class is designed for products that are NOT hot water bath or pressure canner processed. Includes lacto fermented products (using salt, brine, whey, starter culture or SCOBY) for fermenting.

Judging is based upon appearance 40% (even color, uniform pieces and texture, sparkling jar), quality of fruit and vegetables 40% (quality product made in appropriate and food safe conditions, condition of finished product), and complete label including processing method and time/recipe reference 20%.

C200 Fermented Pickle-Vegetable
 C201 Fermented Pickle-Fruit
 C202 Fermented-Chutney, Relish or Paste
 C203 Fermented-Sauerkraut or Kimchi
 C204 Fermented-Beverages
 C205 Fermented-Yogurt
 C206 Fermented-Miscellaneous
 C207 Fermented-Open
 C208 Fermented Honey

DIVISION B

These products must have two-piece lids and be hot-water bathed. Products with paraffin (wax) seals will not be accepted.

Category 1 - Jams and Butters

Jams are fruit pulp and juice with sugar and no distinct form; butters are concentrated fruit pulp, juice, sugar and spice of a smooth consistency. Judging is based on appearance 40% (clarity, color, no foreign substance), consistency 40% (uniformity, smooth, thick, tender), and container 20% (proper head space, perfect seal, complete label including recipe reference, sparkling jar).

C081 Jam-apple butter
 C082 Jam-apricot butter
 C083 Jam-pear butter
 C084 Jam-peach butter
 C085 Jam-apricot
 C086 Jam-apricot pineapple
 C087 Jam-blueberry
 C088 Jam-cherry
 C089 Jam-peach
 C090 Jam-raspberry
 C091 Jam-strawberry
 C092 Jam-strawberry rhubarb
 C093 Jam- mixed fruit
 C094 Jam-other fruit
 C095 Jam-frozen
 C096 Jam-miscellaneous
 C097 Jam-open
 C098 Jam-wild berry

Category 2 - Jellies

Jelly contains fruit juice, pectin and sugar. It is clear and sparkling and holds firm in place. Judging will be based

on texture 40% (tender, firm enough to hold angle when cut, smooth), appearance 40% (clarity, color, no foreign substance) container 20% (proper head space, perfect seal, complete label including recipe reference, sparkling jar).

C101 Jelly-apple
 C102 Jelly-blackberry
 C103 Jelly-boysenberry
 C104 Jelly-chokecherry
 C105 Jelly-crabapple
 C106 Jelly-currant, black
 C107 Jelly-currant, red
 C108 Jelly- gooseberry
 C109 Jelly-grape
 C110 Jelly-mint
 C111 Jelly-peach
 C112 Jelly-plum
 C113 Jelly-raspberry
 C114 Jelly-serviceberry
 C115 Jelly-mixed fruit
 C116 Jelly-syrup
 C117 Jelly-vegetable
 C118 Jelly-frozen
 C119 Jelly-miscellaneous
 C120 Jelly-open

Category 3 - Marmalades and Conserves

Marmalade contains all the fruit except seeds and core, and small pieces of pulp and peel are evenly distributed through a rich, clear, translucent jelly. Although similar to marmalade, conserves are a thicker consistency and usually contain several fruits, nutmeats or raisins.

C126 Marm/Conserve-fruit
 C127 Marm/Conserve-mixed fruit
 C128 Marm/Conserve-marmalade
 C129 Marm/Conserve-vegetable
 C130 Marm/Conserve-open

Category 4 - Preserves

Preserves contain small whole fruits or large chunks of fruit or rinds of fruit, pectin, and sugar in a very thick syrup or slightly jellied juice. Judging is based on fruit 30% (distinct pieces of whole fruit in heavy syrup), syrup 30% (bright, clear color), pack 30% (neat fruit well covered with syrup, complete label including recipe ref-

WEDNESDAY, AUGUST 14

erence, sparkling jar) and fruit 10% (clarity, shape, color firmness of texture).

C131 Preserves-berry

C132 Preserves-fruit

C133 Preserves-miscellaneous

C134 Preserves-open

CLOTHING

Superintendent: Deanna Berry, Ellen Bonnifield

Age Groups: Junior, Teen, Adult, Adult Plus, Senior,

Senior Plus, Pro.

2 entries/numbered category

NEW CLOTHING: Judging is based on workmanship (40%), fabric (20%), choice of pattern (20%), and general appearance (20%).

DIVISION A

Category 1

D001 A1 - After-five hostess apparel

D002 A1 - Dress, blend

D003 A1 - Dress, 100% cotton

D004 A1 - Dress, polyester

D005 A1 - Dress, wool

D006 A1 - Formal gowns

D007 A1 - Housecoat

D008 A1 - Jumper

D009 A1 - Open

Category 2

D011 A2 - Blouse, any fabric

D012 A2 - Shirt, knit pullover

D013 A2 - Shirt, western-woman/girl

D014 A2 - Shirt, western-man/boy

D015 A2 - Shirt, man/boy

D016 A2 - Open

Category 3

D021 A3 - Skirt, 100% cotton

D022 A3 - Skirt, blend

D023 A3 - Skirt, polyester

D024 A3 - Skirt, wool

D025 A3 - Slacks, pull-on-woman/girl

D026 A3 - Slacks, zipper- woman/girl

D027 A3 - slacks, man/boy

D028 A3 - Gauchos or culottes shorts

D029 A3 - Jumpsuit

D030 A3 - Open

Category 4

D036 A4 - Coat, woman/girl

D037 A4 - Pantsuit

D038 A4 - Jacket, woman/girl

D039 A4 - Jacket, man/boy

D040 A4 - Suit, woman/girl

D041 A4 - Suit man/boy

D042 A4 - Open

DIVISION B

Category 1

D046 B1 - Sleepwear, cotton or flannel

D047 B1 - Lingerie, slip

D048 B1 - Lingerie, panties

D049 B1 - Lingerie, bra

D050 B1 - Lingerie, nightwear

D051 B1 - Lingerie, peignoir set

D052 B1 - Spandex-type activewear

D053 B1 - Swimwear

D054 B1 - Open

Category 2

D056 B2 - Apron

D057 B2 - Infants wear

D058 B2 - Capes or ponchos

D059 B2 - Recycled garment

D060 B2 - Vest, woman/girl

D061 B2 - Vest man/boy

D062 B2 - Miscellaneous

D063 B2 - Open

Category 3 - Leather

D071 B3 - Leather-coat

D072 B3 - Leather-jacket

D073 B3 - Leather-skirt

D074 B3 - Leather-miscellaneous

D075 B3 - Leather-open

CLASS 4 - Recreational Sewing (from kits)

D076 B4 - Rec.-camping equipment

D077 B4 - Rec.-jacket

D078 B4 - Rec.-vest

D079 B4 - Rec.-miscellaneous

D080 B4 - Rec.-open

DIVISION C

Category 1 - Embellished (Decorate Your Duds)

D085 C1 - Embellished

D086 C2 - Embellished-baby items

D087 C3 - Embellished-open

DIVISION D

Category 1 - Home Accessories

D090 D1-home accessories

D091 D2-home accessories-open



CRAFTS/HOBBIES

**Superintendents: Jeannie Wixson, Kathy Reck,
Rhonda Green**

Age Groups: Mommy/Daddy & Me (85% must be completed by child), Junior, Teen, Adult, Adult Plus, Senior Plus, Pro, 2 entries/numbered category

Grand Champion and Reserve Grand Champion ribbons may be awarded in each division and age category.

DIVISION A

Articles made from kits are classified as crafts or hobby work. As entries warrant, classes may be divided into categories determined by types of materials.

Category 1 - Decoupage

E001 Decoupage-pictures

E002 Decoupage-decorative accessory

E003 Decoupage-miscellaneous

E004 Decoupage-open

Category 2 - Jewelry

E005 Jewelry-Ankle Bracelet

E006 Jewelry-necklace

E007 Jewelry-earrings

E008 Jewelry-bracelet

E009 Jewelry-rings

E010 Jewelry-hair accessories

E011 Jewelry-Beads-earrings

E012 Jewelry-Beads-necklace

E013 Jewelry-Beads-bracelet

E014 Jewelry-Beads-Belt

E015 Jewelry-Pin

E016 Jewelry-Loom beaded

E017 Jewelry-Necklace & Earring Set

Category 3 - Miscellaneous

E031 Misc.-candles

E032 Misc.-quill work

E033 Misc.-ecology art

E034 Misc.-paint by number

E035 Misc.-string art

E036 Misc.-feathers

E037 Misc.-feather hatband

E038 Misc.-miscellaneous

E039 Misc.-fabric frames

E040 Misc.-fabric photo album

E041 Misc.-glued fabric wall hanging

E042 Misc.-etching, from kit

E043 Misc.-plastic crafts

E044 Misc.-collection

E045 Misc.-fiber art

E046 Misc.-toys

E047 Misc.-pet toys

E048 Misc.-puzzles

WEDNESDAY, AUGUST 14

E049 Misc.-gift baskets
E-50 Misc.-centerpiece
E051 Misc.-open
E052 Misc.-welding

Category 4 - Fly Tying

E055 Fly-ties with feathers
E056 Fly-ties without feathers
E057 Fly-display

Category 5 - Natural Resources

E066 Natural Resources-wildlife
E067 Natural Resource rock collection
E068 Natural Resources-insects
E069 Natural Resources-forestry
E070 Natural Resources-beekeeping
E071 Natural Resources-open
E072 Natural Resources-dried flower arrangement

Category 6 - Upholstered Items

E076 Upholstered-small items
E077 Upholstered-chairs
E078 Upholstered-open

Category 7 - Metal

E079 Metal-open
E080 Metal-misc.

DIVISION B

Category 1 - Ceramics

E081 Ceramics-stained, decorative
E082 Ceramics-stained, household
E083 Ceramics-stained, antique
E084 Ceramics-chalk, decorative
E085 Ceramics-chalk, antique
E086 Ceramics-glazed, decorative
E087 Ceramics-glazed, household
E088 Ceramics-glazed, antique
E089 Ceramics-original
E090 Ceramics-hand brushed
E091 Ceramics-open
E092 Ceramics-Hand Painted

Category 2 - Christmas Crafts

E096 Christmas-beadwork
E097 Christmas-ceramics
E098 Christmas-crystal
E099 Christmas-decoupage
E100 Christmas-fabric, glue
E101 Christmas-fabric, sewn
E102 Christmas-macrame
E103 Christmas-metal
E104 Christmas-origami
E105 Christmas-pettipoint
E106 Christmas-stained glass
E107 Christmas-straw
E108 Christmas-wood
E109 Christmas-wreath
E110 Christmas-miscellaneous
E111 Christmas-wall hanging
E112 Christmas-centerpiece
E113 Christmas-ornament
E114 Christmas-open

Category 3 - Macramé

E121 Macramé-plant hanger
E122 Macramé-wall hanging
E123 Macramé-chair
E124 Macramé-purse or carryall
E125 Macramé-miscellaneous
E126 Macramé-open

Category 4 - Plaster Craft

E131 Plaster-household
E132 Plaster-decorative
E133 Plaster-open

Category 5 - Tube Painting and Painting

E136 Tube-clothing
E137 Tube-accessory item
E138 Tube-household item
E139 Tube-pictures
E140 Tube-fabric paint with liquid embroidery
E141 Tube-fabric paint with brush painted
E142 Tube-fabric paint with liquid home decor

Category 6 - Wall Decorations

E146 Wall-hats
E147 Wall-miscellaneous

E148 Wall-wreath
E149 Wall-swag
E150 Wall-centerpiece
E151 Wall-wind chimes
E152 Wall-plastic canvas
E153 Wall-dream catchers
E154 Wall-picture
E155 Wall-open

Category 7 - Recycled or Ecology

E160 Recycled/Ecology-popsicle stick
E161 Recycled/Ecology-cardboard
E162 Recycled/Ecology-pet rocks
E163 Recycled/Ecology-pine cones
E164 Recycled/Ecology-tin-can art
E165 Recycled/Ecology-glass bottles
E166 Recycled/Ecology-glass with fabric
E167 Recycled/Ecology-recycled jewelry
E168 Recycled/Ecology-recycled fabric
E169 Recycled/Ecology-clothes
E170 Recycled/Ecology-entire doll
E171 Recycled/Ecology-open

Category 8 - Artificial flowers

E175 Silk-Table
E176 Beaded
E177 Paper
E178 Open
E179 Corsage

Category 9 - Dolls

E185 Dolls - crochet
E186 Dolls - fabric
E187 Dolls - porcelain
E188 Dolls - restored
E189 Dolls – wooden
E190 Dolls - other

Category 10 – Treasures from the Family Trunk – NEW
CATEGORY: Do you have family heirlooms or treasures that you have put together into a beautiful display? This is the category for you! Judged on: 1)how well does it represent the era? 2) Presentation, 3) Has it aged well?

E195 FT-Toys
E196 FT -Wall Hanging

E197 FT -Jewelry
E198 FT -Misc.

DIVISION C

Category 1 – Leather/Faux Leather

E216 Flat-belts/buckles/dog collars/bracelets
E217 Flat billfold/wallet/checkbook cover
E218 Flat-display/sample boardcase-brief case
E219 Flat-photo album cover
E220 Flat -frame, mirror or photo
E221 Flat -misc.
E222 Flat -other

Category 2 – Leather/Faux Leather

E230 Case-brief case/camera
E231 Case-knife
E232 Case-gun case/holster
E233 Case-fishing rod/creel
E234 Case-purse
E235 Case-misc.
E236 Case-other

Category 3 – Leather/Faux Leather

E240 Tack-saddle
E241 Tack-breast collar
E242 Tack-bridle
E243 Tack-harness
E244 Tack-seat
E245 Tack-misc.
E246 Tack-other

DIVISION D

Category 1 - Models

E256 Models-boats
E257 Models-cars
E258 Models-trucks
E259 Models-airplanes
E260 Models-rockets
E261 Models-snap together
E262 Models-grouping
E263 Models-miscellaneous

Category 2 - Legos

E280 Legos-kit moving
E281 Legos -kit non-moving

WEDNESDAY, AUGUST 14

E282 Legos -kit with your improvements
E283 Legos -scene
E284 Legos -house
E285 Legos -airplane/car/vehicle
E286 Legos -original design
E287 Legos -open

Category 3 - Misc. Construct Blocks

E289 MCT - Construct Blocks
E290 MCT - Knex
E291 MCT - Zome Tools
E292 MCT - Tinker Toys
E293 MCT - Erector
E294 MCT - Open

DIVISION E

Category 1 – TRADITIONAL SCRAPBOOK

E295 Trad. Scrap-wedding
E296 Trad. Scrap-family
E297 Trad. Scrap-sports
E298 Trad. Scrap-birthday
E299 Trad. Scrap-special occasion
E300 Trad. Scrap-vacation
E301 Trad. Scrap- baby/child
E302 Trad. Scrap-one page
E303 Trad. Scrap-Kit
E304 Trad. Scrap-open

Category 2 – DIGITAL SCRAPBOOK

E310 Dig. Scrap-wedding
E311 Dig. Scrap-family
E312 Dig. Scrap-sports
E313 Dig. Scrap-birthday
E314 Dig. Scrap-special occasion
E315 Dig. Scrap-vacation
E316 Dig. Scrap- baby/child
E317 Dig. Scrap-one page
E318 Dig. Scrap-Kit
E319 Dig. Scrap-open

FARM PRODUCTS

Superintendent: Jody Camilletti

Age Groups: Junior, Teen, Adult, Adult Plus, Senior,
Senior Plus, Pro

2 entries/numbered category

Dairy Cow, Dairy Goat, Elk, Venison, Pork, etc. Please label item for species. Only appropriately labeled, and pasteurized products will be tasted.

NO home remedies or medicinal products will be accepted.

DIVISION A

Category 1 - Unpasteurized Dairy Products

F001 Unpast. Dairy-butter, 1lb.
F002 Unpast. Dairy-cheddar type cheese, 1/2 lb.
F003 Unpast. Dairy-cottage cheese, 1 pint
F004 Unpast. Dairy-hard cheese, 1/2 lb.
F005 Unpast. Dairy-yogurt cheese, 1/2 lb.
F006 Unpast. Dairy-misc cheese
F007 Unpast. Dairy-whole milk 1 pint displayed with cream
F008 Unpast. Dairy-buttermilk, 1 pint
F009 Unpast. Dairy-skim milk, 1 pint
F010 Unpast. Dairy-goat milk, 1 pint
F011 Unpast. Dairy-cream, 1/2 pint

Category 2 - Pasteurized Dairy Products

F016 Past. Dairy-butter, 1lb.
F017 Past. Dairy-cheddar type cheese, 1/2 lb.
F018 Past. Dairy-cottage cheese, 1 pint
F019 Past. Dairy-hard cheese, 1/2 lb.
F020 Past. Dairy-yogurt cheese, 1/2 lb.
F021 Past. Dairy-miscellaneous cheese
F022 Past. Dairy-whole milk 1 pint displayed with cream
F023 Past. Dairy-buttermilk, 1 pint
F024 Past. Dairy-skim milk, 1 pint
F025 Past. Dairy-goat milk, 1 pint
F026 Past. Dairy-cream, 1/2 pint
F027 Past. Dairy-yogurt, 1 cup

Category 3 - Eggs (one dozen)

F030 Eggs-white large
F031 Eggs-white medium/small
F032 Eggs-brown large
F033 Eggs-brown medium/small
F034 Eggs-misc. (goose, duck, etc.)
F035 Eggs-open

Category 4 - Honey

- F037 Honey - Clover
- F038 Honey – Alfalfa
- F039 Honey – Wildflower
- F040 Honey - Blended
- F041 Honey – with honeycomb

Category 5 - Meat (method of preparation & processing, time and date processed, and recipe)

- F042 Meat-salami, 1/2 lb.
- F043 Meat-German smoked sausage, 2 links
- F044 Meat-Italian smoked sausage, 2 links
- F045 Meat-Polish smoked sausage, 2 links
- F046 Meat-open

Category 6 - Miscellaneous

- F049 Miscellaneous-open
- F050 Miscellaneous-open

DIVISION B – DRIED PRODUCTS

Dried products must be in a moisture vapor-proof container or bag. Labels on dried foods must indicate the name of the product, any pretreatment, additional ingredients, method of drying (oven, dehydrator, solar), drying time and date dried. Example: Apricots, ascorbic acid dipped, dehydrator dried, eight hours, July 2019. Food Safety Advisory: Current research indicates that E. Coli can survive low temperature drying. We recommend that fair judges refrain from tasting home dried meats. Please contact the Routt County Extension office for more food safety recommendations and recipes.

Category 1 - Fruit

- F060 Fruit-apricots
- F061 Fruit-cherries
- F062 Fruit-fruit leather
- F063 Fruit-other fruit
- F064 Fruit-pears
- F065 Fruit-plums/prunes
- F066 Fruit-grapes/raisins
- F067 Fruit-open

Category 2 - Vegetables

- F070 Vegetables-carrots
- F071 Vegetables-celery

- F072 Vegetables-corn
- F073 Vegetables-mixed vegetables
- F074 Vegetables-onions
- F075 Vegetables-other vegetables
- F076 Vegetables-peppers
- F077 Vegetables-squash/zucchini
- F078 Vegetables-miscellaneous
- F079 Vegetables-open

Category 3 - Others

- F080 Other-herbs
- F081 Other-jerky
- F082 Other- noodles
- F083 Other-miscellaneous
- F084 Other-open

DIVISION C – BATH PRODUCTS

Bath products should contain one appropriately labeled bar, bottle or container per entry.

Category 1 - Homemade Soap

- F086 Homemade soap-made from a kit
- F087 Homemade soap-made from scratch
- F088 Homemade soap-open

Category 2 - Homemade Lotion

- F090 Homemade lotion-made from kit
- F091 Homemade lotion-made from scratch
- F092 Homemade lotion-salve
- F093 Homemade lotion-serum
- F094 Homemade lotion-open

Category 3 – Homemade Aromatherapy

- F095 Homemade Aromatherapy-oil
- F096 Homemade Aromatherapy-salts
- F097 Homemade Aromatherapy-miscellaneous
- F098 Homemade Aromatherapy-open

Category 4 – Homemade Pet

- F100 Homemade Pet-lotion/salve
- F101 Homemade Pet-soap
- F102 Homemade Pet treats
- F103 Homemade Pet-miscellaneous
- F104 Homemade Pet-open

WEDNESDAY, AUGUST 14

FLOWERS and PLANTS

Superintendents: Suzie Copeland, Lois Caster, Ashley

Sweetser, Becky Stephenson, Franny Beacom

Age Groups: Junior, Teen, Adult, Adult Plus, Senior, Senior Plus, Pro

2 entries/numbered category

Grand Champion and Reserve Grand Champion ribbons may be awarded in each division and age category. At the discretion of the judge, Champion ribbons may be awarded in each division and age category. The Superintendent reserves the right to remove any exhibit deemed unsuitable for display.

Entries identified as a noxious weed will be disqualified and destroyed.

Entries will be disqualified if they have insects or do not contain the number of blooms or stems designated in each class.

Flowers should be exhibited with blooms of uniform size, shape and color, straight stems and any natural foliage. Exhibitors must furnish their own containers.

Flowers exhibited should be at the peak of maturity, not wilting, and able to hold up well in the show. Hardening flowers after cutting is important. To prepare exhibit, gather in late afternoon the day before the show, cut stems under water and remove lower foliage with a sharp knife. Plunge immediately up to the neck into warm water for an hour before placing in a cool, dark place (refrigerator 40-50 degrees F) overnight. The morning of the show, 1/2 inch should be removed from the stem. There should be no dead blooms present.

For the exhibits:

Bloom: one individual flower with stem and foliage

Stem: A lengthened flower cluster, such as a Gladiola

Spray: A main stem with side branches and several blooms

Unless noted otherwise each entry should contain 3 stems.

TIP: Pour about 1/4 cup of soda pop into the water in a vase full of cut flowers. The sugar in the soda will make the blossoms last longer. If you have a clear vase and want the water to remain clear, use a clear soda, like Sprite or

7-Up.

DIVISION A - ANNUALS

Category 1

G001 A1-Aster, 3 blooms

G002 A1-Bachelor button, 3 blooms

G003 A1-Calendula, 3 blooms

G004 A1-Cosmos, 3 blooms

G005 A1-Open

Category 2

G010 A2-Dahlia from seeds, 1bloom

G011 A2-Celosia, 1bloom

G012 A2-Cleome, 1 bloom

G013 A2-Open

Category 3

G020 A3-Geranium, 3 stems

G021 A3-Geranium, 3 stems, Martha Washington

G022 A3-Geranium, Open

Category 4

G025 A4 - Impatiens, 3 stems

G026 A4 - Nasturtium, 3 blooms

G027 A4 - Poppy, California, 3 stems

G028 A4 - Salvia, 3 stems

G029 A4- Open

Category 5

G035 A5 - Marigold, 1 bloom under 2 inches

G036 A5 - Marigold, 1bloom 2-3-inches

G037 A5 - Marigold, 1bloom over 3-inches

G038 A5 - Open

Category 6

G045 A6 - Petunia, single, 3 blooms

G046 A6 - Petunia, double, 3 blooms

G047 A6 - Petunia, ruffled, 3 blooms

G048 A6 - Open

Category 7

G050 A7 - Sunflower-cultivated, 1 stem

G051 A7 - Sunflower-wild, 1 stem

G052 A7 - Sunflower-cultivated, colored, 1 stem

G053 A7 - Open

Category 8

G058 A8 - Phlox, 1 stem
G059 A8 - Nicotiana, 1 spray
G060 A8 - Open

Category 9

G065 A9 - Statice, 3 stems
G066 A9 - Strawflower, 3 stems
G067 A9 - Wildflower-cultivated, 3 stems
G068 A9 - Open

Category 10

G075 A10 - Sweet peas, one color, 5 stems
G076 A10 - Sweet peas, mixed colors, 5 stems
G077 A10 - Open

Category 11

G080 A11 - Snapdragon, single, 3 stems
G081 A11 - Snapdragon, double, 3 stems
G082 A11 - Snapdragon, Open
G083 A11 - Foxglove, 3 stems
G084 A11 - Open

Category 12

G085 A12 - Zinnia, 1 bloom over 5 inches
G086 A12 - Zinnia, 1 bloom 2-5 inches
G087 A12 - Zinnia, 3 blooms under 2 inches
G088 A12 - Zinnia- Open

Category 13

G090 A13 - Gomphrena, 3 stems
G091 A13 - Portulaca, 3 stems
G092 A13 - Verbena, 3 stems
G093 A13 - Open

Category 14

G095 A14 - Annual - miscellaneous
G096 A14 - Annual - Open

DIVISION B - PERENNIALS

Category 1

G100 P1 - Aster, 3 stems
G101 P1 - Carnation, 3 stems
G102 P1 - Coreopsis, 3 stems
G103 P1 - Chrysanthemum, 3 stems

Category 2

G106 P2 - Columbine, giant, 3 stems
G107 P2 - Columbine, dwarf, 3 stems
G108 P2 - Coral bells, 3 stems
G109 P2 - Dianthus, 3 stems
G110 P2 - Sweet William, 3 stems
G111 P2 - Lupine, 1 stem
G112 P2 - Open

Category 3

G115 P3 - Daisy, Gloriosa, 3 stems
G116 P3 - Daisy, Painted, 3 stems
G117 P3 - Daisy, Shasta, 3 stems
G118 P3 - Blackeyed Susan, 3 stems
G119 P3 - Gaillardia, 3 stems
G120 P3 - Rudbeckia, 3 stems
G121 P3 - Coneflower
G122 P3 - Liatris
G123 P3 - Open

Category 4

G130 P4 - Hollyhock, single 1 stem
G131 P4 - Hollyhock, double 1 stem
G132 P4 - Open

Category 5

G140 P5 - Rose, floribunda, 1 stem
G141 P5 - Rose, hybrid tea, 1 stem
G142 P5 - Rose, miniature, 1 stem
G143 P5 - Rose, climber, 1 spray
G144 P5 - Rose, Open

Category 6

G150 P6 - Sweet pea, 3 stems
G151 P6 - Sweet pea, Open

Category 7

G155 P7 - Viola, Johnny Jump Up, 3 stems
G156 P7 - Viola, Pansy, 3 stems
G157 P7 - Viola, Viola, 3 stems
G158 P7 - Viola, Open

Category 8

G165 P8 - Ground cover, 3 stems
G166 P8 - Open

WEDNESDAY, AUGUST 14

Category 9

G175 P9 - Delphinium, 1 stem

G176 P9 - Phlox, 1 stem

G177 P9 - Open

Category 10

G180 P10 - Yarrow, 3 stems

G181 P10 - Wildflower, cultivated, 3 stems

G182 P10 - Statice

G183 P10 - Open

Category 11

G186 P11 - Poppy, Iceland, 3 stems

G187 P11 - Poppy, Oriental, 3 stems

G188 P11 - Open

Category 12

G190 P12 - Perennials, miscellaneous

G191 P12 - Perennials, Open

Category 13

G195 P13 - Clematis, 1 spray

G196 P13 - Trellis, Open

Category 14

G197 P14 - Lavender

G198 P14 - Bee Balm

G199 P14 - Open mint family

DIVISION C - BULBS, CORMS & TUBERS

Category 1

G200 BCT1 - Dahlia, 1 bloom 8 inches and over

G201 BCT1 - Dahlia, 1 bloom 4-8 inches

G202 BCT1 - Dahlia, 1 bloom under 4 inches

G203 BCT1 - Dahlia, Open

Category 2

G210 BCT2 - Gladiola, standard, 1 stem

G211 BCT2 - Gladiola, dwarf, 1 stem

G212 BCT2 - Gladiola, Open

Category 3

G220 BCT3 - Lily, Asiatic, 1 stem

G221 BCT3 - Lily, Day, 1 stem

G222 BCT3 - Lily, Open

G223 BCT3 - Lily, Oriental, 1 stem

Category 4

G230 BCT4 - Bulbs, Corms, Tubers -miscellaneous

G231 BCT4 - Bulbs, Corms, Tubers -Open

DIVISION D - ARTISTIC DESIGN

Category 1

G240 AD1 - Art-arrangement, in oasis

G241 AD1 - Art-arrangement, 1 main color

G242 AD1 - Art-arrange.-mini, max 6 inch height and width

G243 AD1 - Art-arrange.-super mini, max 3 inch height and width

G244 AD1 - Art-arrangement, dried

G245 AD1 - Art, misc., arrangement

G246 AD1 - Art, open

Category 2

G250 AD2 - Art-bouquet, artistic choice

G251 AD2 - Art-boquet-artistic design

G252 AD2 - Art-Misc.

G253 AD2 - Art-Open



DIVISION E - CONTAINER PLANTS & TREES

Category 1

G260 C1 - Container - flowering patio container

G261 C1 - Container - flowering houseplant

G262 C1 - Container - foliage houseplant

G263 C1 - Container - foliage patio

G264 C1 - Open

Category 2

G270 C2 - Container - succulents

G271 C2 - Container – succulents & cactus
G272 C2 - Container – terrarium
G273 C2 – Container – dish garden
G274 C2 – Container – open

Category 3

G285 C3 - Container - edible herb, vegetable, fruit
G286 C3 - Open

Category 4

G290 C4 - Container - trees
G291 C4 - Container – Open
G292 C4 – Vintage Planters

DIVISION F – FAIRY GARDENS

Category 1

G301 FG1- Theme

Category 2

G310 FG2- Herbal

Category 3

G320 FG3- Succulent
G321 FG3-Cactus

Category 4

G330 FG4- Patio
G331 FG4- Flowering

Category 5

G340 FG5- Artistic
G341 FG5- Artistic Choice

Category 6

G342 – FG6-Treasures from the Family Trunk

Category 7

G450 FG7 – Commercial Fairy Gardens

NEEDLEWORK

Sponsor: Sew Steamboat

**Superintendents: Shirley Gossert, Patricia Bennett,
Linda Signs, Bonnie Standridge**

Age Groups: Mommy/Daddy and Me, Junior, Teen,
Adult, Adult Plus, Senior, Senior Plus, Pro

2 entries/numbered category

Grand Champion and Reserve Grand Champion ribbons may be awarded in each division and age category. New classes will be added when three or more of the same items are entered under miscellaneous. Items must be clean in order to be judged and will be scored on technique and workmanship (35%), appearance (30%), design (30%), and fabric or suitability of yarn/thread (5%). Counted cross stitch pictures will be judged on the centering of the cross stitch in the frame, matting and workmanship.

DIVISION A

Category 1 - Embroidery, Hand Done

H001 Hand-pillow case
H002 Hand-tea towels
H003 Hand-buff, van set, scarf, etc.
H004 Hand-luncheon or tablecloth
H005 Hand-garment
H006 Hand-stamped X-stitch pillow case
H007 Hand-stamped X-stitch baby item
H008 Hand-stamped X-stitch luncheon, etc.
H009 Hand-hand stamped picture
H010 Hand-crewel
H011 Hand-needlepoint picture
H012 Hand-needlepunch picture
H013 Hand-needlepoint plastic canvas toys
H014 Hand-needlepoint plastic canvas household item
H015 Hand-needlepoint-plastic canvas
H016 Hand-needlepoint-plastic canvas-misc.
H017 Hand-needlepoint plastic canvas dolls
H018 Hand-needlepunch-misc
H019 Hand-open

Category 2 - Embroidery, Machine Done

H021 Machine-pillow case
H022 Machine-tea towels
H023 Machine-tea towels, appliqué
H024 Machine-luncheon or tablecloth
H025 Machine-buffet, vanity set, scarf etc.
H026 Machine-garments
H027 Machine-embroidery open
H028 Machine-picture

Category 3 - Counted Cross Stitch

WEDNESDAY, AUGUST 14

H031 X-wall hanging
H032 X-baby item
H033 X-picture-scenery, small
H034 X-picture-scenery, large
H035 X-picture-wildlife/animals, small
H036 X-picture-wildlife/animals, large
H037 X-picture-sampler, small
H038 X-picture-sampler, large
H039 X-picture-floral, small
H040 X-picture-floral, large
H041 X-picture-building/ still life, small
H042 X-picture-building/still life, large
H043 X-towel
H044 X-miscellaneous
H045 X-open
H046 X-computer design/small
H047 X-computer design/large

DIVISION B

Category 1 - Latch Hook

H051 LH-original design cross-stitch rug
H052 LH-original design hook rug
H053 LH-miscellaneous
H054 LH-miscellaneous
H055 LH-miscellaneous

Category 2 - Hooked Rugs

HO56 Hooked-small rug
HO57 Hooked-medium rug
HO58 Hooked-large rug
HO59 Hooked-pillow
HO60 Hooked-miscellaneous
HO61 Hooked-miscellaneous
HO62 Hooked-miscellaneous

Category 3 - Decorator Pillows

H065 Dec. Pillows-miscellaneous
H066 Dec. Pillows-miscellaneous
H067 Dec. Pillows-miscellaneous
H068 Dec. Pillows-miscellaneous
H069 Dec. Pillows-miscellaneous

DIVISION C

Category 1 - Toys or Decorator Items

H070 Toy-knitted
H071 Toy-crocheted doll

H072 Toy-felt/non-woven
H073 Toy-fabric stuffed animal
H074 Toy-fabric doll
H075 Toy-accessory
H076 Toy-plastic-headed doll
H077 Toy-miscellaneous

Category 2 - Christmas Decorations

H080 Xmas-wall hanging/non-quilt
H081 Xmas-pillow
H082 Xmas-crochet
H083 Xmas-knitted
H084 Xmas-needlepoint
H085 Xmas-needlepoint, plastic canvas
H086 Xmas-embroidery
H087 Xmas-tatted
H088 Xmas-felt/non-woven
H089 Xmas-counted x-stitch, small
H090 Xmas-counted x-stitch, large
H091 Xmas-counted x-stitch, stocking
H092 Xmas-latch hook
H093 Xmas-open

DIVISION D

Category 1 - Home Spun Items

H100 HS-weaving
H101 HS-knitting
H102 HS-crocheting
H103 HS-felting

Category 2 - Home Spun Skeins

H105 HS-Sheep Wool-fine single ply
H106 HS-Sheep Wool-medium singly ply
H107 HS-Sheep Wool-two or more plies
H108 HS-Goat/Cashmere/ Angora-single or multi-ply
H109 HS-Llama/Alpaca-single or multi-ply
H110 HS-Blends of any above fibers (no cotton, synthetics, etc.)
H111 HS-open

Category 3 - Items made by two or more people

H115 Two people-miscellaneous
H116 Two people-open

Category 4 - Non-spun & Felt

H117 NSP-open

H118 NSP-open

H119 NSP-open

DIVISION E

Category 1 - Crocheting - Thread

H120 Thread-clothing

H121 Thread-accessory

H122 Thread-doll garment

H123 Thread-doily, dresser runner

H124 Thread-jewelry

H125 Thread-household item

H126 Thread-tablecloth

H127 Thread-bedspread

H128 Thread-miscellaneous

H129 Thread-crochet basket

Category 2 - Crocheting - Yarn

H133 Yarn-clothing

H134 Yarn-accessory

H135 Yarn-doll garment

H136 Yarn-household item

H137 Yarn-afghan

H138 Yarn-lap afghan

H139 Yarn-miscellaneous

H140 Yarn-open

Category 3 - Crocheting - Baby Items

H143 Baby-booties

H144 Baby-afghan

H145 Baby-sweater

H146 Baby-cap

H147 Baby-mittens

H148 Baby-dress or pinafore

H149 Baby-two-piece suit

H150 Baby-three-piece suit

H151 Baby-accessory

H152 Baby-miscellaneous

H153 Baby-open

Category 4 - Tatting

H155 Tat-doily

H156 Tat-inserts

H157 Tat-edgings

H158 Tat-open

Category 5 – Treasures from the Family Trunk – NEW CATEGORY: Do you have family heirlooms or treasures that you have put together into a beautiful display? This is the category for you! Judged on: 1)how well does it represent the era? 2) Presentation, 3) Has it aged well?

E195 FT-Toys

E196 FT -Wall Hanging

E197 FT -Open

E198 FT -Misc.

DIVISION F

Category 1 - Knitting - Miscellaneous

H160 Knit-clothing

H161 Knit-accessory

H162 Knit-household item

H163 Knit-afghan

H164 Knit-lap afghan

H165 Knit-miscellaneous

H166 Knit-open

Category 2 - Knitting – Baby Items

H170 Knit Baby-booties

H171 Knit Baby-cap

H172 Knit Baby-mittens

H173 Knit Baby-sweater

H174 Knit Baby-dress or pinafore

H175 Knit Baby-two-piece suit

H176 Knit Baby-three-piece suit

H177 Knit Baby-afghan

H178 Knit Baby-lap afghan

H179 Knit Baby-open

DIVISION G

Category 1 - Swedish Weaving

H190 SW-tablecloth

H191 SW-afghan

H192 SW-place mat

Category 2 - Weaving

H196 Weave-placemats

H197 Weave-coaster

H198 Weave-clothing

WEDNESDAY, AUGUST 14

H199 Weave-accessories

H200 Weave-open

PHOTOGRAPHY

Superintendent: Dana Haskins, Robin Wilson, Greg Backes, Gail Hanley

Age Groups: Mommy/Daddy and Me, Junior, Teen, Adult, Adult Plus, Senior, Senior Plus, Pro

2 entries/numbered category

Grand Champion and Reserve Grand Champion ribbons may be awarded in Junior/Teen, Adult/Senior/Senior Plus, Pro

Photographs must be taken by the exhibitor, framed, wired and ready to hang.

Category 1 - Special effects

P030 Color

P031 Sepia

P032 Hand tint

P033 Optical Illusions

P034 Urban Landscape

P035 Macro

P036 Architecture

P037 Collection (2 or more photos together)

P038 Open

Category 2 - Digital Black & White

P045 Ranch Life

P046 Portrait

P047 Landscape

P048 Still Life

P049 Floral

P050 Abstract

P051 Animal/Domestic

P052 Animal/Wildlife

P053 Action

P054 Urban Landscape

P055 Macro

P056 Architecture

P057 Collection (2 or more photos together)

P058 Open

Category 3 - Digital Color

P060 Ranch Life

P061 Portrait

P062 Landscape

P063 Still Life

P064 Floral

P065 Abstract

P066 Animal/Domestic

P067 Animal/Wildlife

P068 Action

P069 Sunset

P070 Urban Landscape

P071 Nature Close Up

P072 Architecture

P073 Collection (2 or more photos together)

P074 Open

QUILTS

Sponsor: Sew Steamboat

Superintendents: Madeleine Vail, Jackie Grimaldi, Chris Hensen, Cathy Gero, Peggy Hoff, Ann McCoy, Cindy Doran

Age Groups: Mommy/Daddy and Me, Junior, Teen, Adult, Adult Plus, Senior, Senior Plus, Master (professional/prize winner at state, national or international event). Your age must be included on your entry tag.

Awards

First Place, Second Place, Third Place and Honorable Mention ribbons may be awarded - at the judges' discretion - in each age group, in each lettered category. Champion and Reserve Champion ribbons may be awarded in each CLASS for each age group. Grand Champion and Reserve Grand Champion ribbons may be awarded in each DIVISION for each age group. Two entries may be submitted in each lettered category and, with the exception of quilt tops, must be finished.

Special Awards

Colorado Quilt Council Award of Excellence: This special ribbon is awarded to the quilt demonstrating overall excellence in design and workmanship and is given at the discretion of the judge(s).

First Timer Award presented by the Colorado Quilt

Council: This special ribbon is awarded for a first-time entry. This award recognizes quilters who have not previously entered their work. If this is your first time exhibiting a quilt or if this is your first quilt, this information must be noted on your entry form. It is given at the discretion of the judge(s).

Judge's Choice Award(s): A special ribbon is awarded to a quilt each quilting judge would like to acknowledge as a personal favorite.

DIVISION A - Small Quilts (No more than 60" on any one side)

Category 1: Patchwork

- M001 Hand pieced, hand quilted
- M002 Machine pieced, machine quilted
- M003 Machine pieced, hand quilted
- M004 Hand pieced, machine quilted
- M005 Foundation pieced
- M006 Kit
- M007 Original design
- M008 Vintage item, finished this fair year
- M009 Solo
- M010 Duo
- M011 Group
- M012 Re-purposed item
- M013 Holiday theme
- M014 Other

Category 2: Applique

- M021 Hand appliqued, hand quilted
- M022 Machine applique, machine quilted
- M023 Machine applique, hand quilted
- M024 Hand applique, machine quilted
- M025 Wool applique, hand-stitched
- M026 Kit
- M027 Original design
- M028 Vintage item, finished this fair year
- M029 Solo
- M030 Duo
- M031 Group
- M032 Re-purposed item
- M033 Holiday theme
- M034 Other

Category 3: Mixed Technique

- M041 Hand applique, pieced and quilted
- M042 Machine applique, pieced and quilted
- M043 Hand / machine combined techniques
- M044 Kit
- M045 Original design
- M046 Vintage item, finished this fair year
- M047 Hand Embroidery/Embellished
- M048 Machine Embroidery/Embellished
- M049 Solo
- M050 Duo
- M051 Group
- M052 Re-purposed item
- M053 Holiday theme
- M054 Other

Category 4: Special Techniques

- M061 Whole cloth, hand quilted
- M062 Whole cloth, machine quilted
- M063 Whole cloth, pre-printed design
- M064 Yo-yo
- M065 Embellished
- M066 Embroidery
- M067 Crazy Quilt
- M068 Unfinished pieced top
- M069 Solo
- M070 Duo
- M071 Group
- M072 Tied Quilt
- M073 Rag Quilt
- M074 T-shirt Quilt
- M075 Holiday theme
- M076 Other



WEDNESDAY, AUGUST 14

DIVISION B: Medium Quilts (less than 85" on any one side)

Category 1: Patchwork

M101 Hand pieced, hand quilted
M102 Machine pieced, machine quilted
M103 Machine pieced, hand quilted
M104 Hand pieced, machine quilted
M105 Foundation pieced
M106 Kit
M107 Original design
M108 Vintage item, finished this fair year
M109 Solo
M110 Duo
M111 Group
M112 Re-purposed item
M113 Holiday theme
M114 Other

Category 2: Applique

M121 Hand applique, hand quilted
M122 Machine applique, machine quilted
M123 Machine applique, hand quilted
M124 Hand applique, machine quilted
M125 Wool applique, hand-stitched
M126 Kit
M127 Original design
M128 Vintage item, finished this fair year
M129 Solo
M130 Duo
M131 Group
M132 Re-purposed item
M133 Holiday theme
M134 Other

Category 3: Mixed Technique

M141 Hand applique, pieced and quilted
M142 Machine applique, pieced and quilted
M143 Hand / machine combined techniques
M144 Kit
M145 Original design
M146 Vintage item, finished this fair year
M147 Hand Embroidery/Embellished
M148 Machine Embroidery/Embellished
M149 Solo
M150 Duo

M151 Group
M152 Re-purposed item
M153 Holiday theme
M154 Other

Category 4: Special Techniques

M161 Whole cloth, hand quilted
M162 Whole cloth, machine quilted
M163 Whole cloth, pre-printed design
M164 Yo-yo
M165 Embellished
M166 Embroidery
M167 Crazy Quilt
M168 Unfinished pieced top
M169 Solo
M170 Duo
M171 Group
M172 Tied Quilt
M173 Rag Quilt
M174 T-shirt Quilt
M175 Holiday theme
M176 Other

DIVISION C: Large Quilts (more than 85" on any one side)

Category 1: Patchwork

M201 Hand pieced, hand quilted
M202 Machine pieced, machine quilted
M203 Machine pieced, hand quilted
M204 Hand pieced, machine quilted
M205 Foundation pieced
M206 Kit
M207 Original design
M208 Vintage item, finished this fair year
M209 Solo
M210 Duo
M211 Group
M212 Re-purposed item
M213 Holiday theme
M214 Other

Category 2: Applique

M221 Hand applique, hand quilted
M222 Machine applique, machine quilted
M223 Machine applique, hand quilted

M224 Hand applique, machine quilted
 M225 Wool applique, hand-stitched
 M226 Kit
 M227 Original design
 M228 Vintage item, finished this fair year
 M229 Solo
 M230 Duo
 M231 Group
 M232 Re-purposed item
 M233 Holiday theme
 M234 Other

Category 3: Mixed Technique

M241 Hand applique, pieced and quilted
 M242 Machine applique, pieced and quilted
 M243 Hand / machine combined techniques
 M244 Kit
 M245 Original design
 M246 Vintage item, finished this fair year
 M247 Hand Embroidery/Embellished
 M248 Machine Embroidery/Embellished
 M249 Solo
 M250 Duo
 M251 Group
 M252 Re-purposed item
 M253 Holiday theme
 M254 Other

Category 4: Special Techniques

M261 Whole cloth, hand quilted
 M262 Whole cloth, machine quilted
 M263 Whole cloth, pre-printed design
 M264 Yo-yo
 M265 Embellished
 M266 Embroidery
 M267 Crazy Quilt
 M268 Unfinished pieced top
 M269 Solo
 M270 Duo
 M271 Group
 M272 Tied Quilt
 M273 Rag Quilt
 M274 T-shirt Quilt
 M275 Holiday theme
 M276 Other

DIVISION D: Wall Quilts (any size)

Category 1: Traditional

M301 Pieced
 M302 Applique
 M303 Foundation pieced
 M304 Mixed Techniques
 M305 Hand embroidery
 M306 Machine embroidery
 M307 Embellished
 M308 Made from a kit
 M309 Handmade (no machine work)
 M310 Solo
 M311 Duo
 M312 Group
 M313 T-shirt quilt
 M314 Holiday item
 M315 Other



Category 2: Art, Abstract

M321 Pieced
 M322 Applique
 M323 Foundation pieced
 M324 Mixed Techniques
 M325 Hand Embroidery
 M326 Machine Embroidery
 M327 Embellished
 M328 Original
 M329 Made from a kit
 M330 Handmade (no machine work)
 M331 Solo
 M332 Duo
 M333 Group
 M334 Other

WEDNESDAY, AUGUST 14

Category 3: Art, Pictorial

M341 Pieced
M342 Applique
M343 Foundation pieced
M344 Mixed Techniques
M345 Embroidery
M346 Embellished
M347 Original
M348 Made from a kit
M349 Handmade (no machine work)
M350 Solo
M351 Duo
M352 Group
M353 Other

DIVISION E: Home Goods

Category 1: Bedroom Accessory

M401 Pillow shams, patchwork
M402 Pillow shams, appliqué
M403 Pillow shams, embroidery
M404 Pillow shams, embellished
M405 Bed runner, patchwork
M406 Bed runner, applique
M407 Bed runner, original design
M408 Vintage item, finished this fair year
M409 Re-purposed item
M410 Holiday item
M411 Other

Category 2: Kitchen/Dining Accessory

M421 Placemats, patchwork
M422 Placemats, applique
M423 Candle mat, patchwork
M424 Candle mat, applique
M425 Pot holder, patchwork
M426 Pot holder, applique
M427 Mug rug, patchwork
M428 Mug rug, applique
M429 Appliance cover
M430 Table cover, patchwork
M431 Table cover, applique
M432 Vintage item, finished this fair year
M433 Re-purposed item
M434 Holiday item
M435 Other

Category 3: Travel Accessory

M441 Cosmetic bag, patchwork
M442 Cosmetic bag, appliqué
M443 Hand bag, patchwork
M444 Hand bag, appliqué
M445 Tote bag, patchwork
M446 Tote bag, appliqué
M447 Other

DIVISION F: Fashion

Category 1: Jackets

M501 Pieced
M502 Applique
M503 Foundation pieced
M504 Mixed technique
M505 Hand embroidery
M506 Machine embroidery
M507 Embellished
M508 Vintage item, finished this fair year
M509 Re-purposed item
M510 Original design
M511 Made from a kit
M512 Other

Category 2: Vests

M521 Pieced
M522 Applique
M523 Foundation pieced
M524 Mixed technique
M525 Hand embroidery
M526 Machine embroidery
M527 Embellished
M528 Vintage item, finished this fair year
M529 Re-purposed item
M530 Original design
M531 Made from a kit
M532 Other

Category 3: Other

M541 Pieced
M542 Applique
M543 Foundation pieced
M544 Mixed technique
M545 Hand embroidery

M546 Machine embroidery
M547 Embellished
M548 Vintage item, finished this fair year
M549 Re-purposed item
M550 Original design
M551 Made from a kit
M552 Other

VEGETABLES & CROPS

Superintendents: Linda Long, Kami Long, Susie Crowner, Glenda Luark

Age Groups: Junior/Teen, Adult, Adult Plus, Senior, Senior Plus, Pro
2 entries/numbered category

Grand Champion and Reserve Grand Champion ribbons may be awarded in each division and age category. Classes may include all varieties of a vegetable. New classes will be created to accommodate three or more of the same item entered under miscellaneous.

Display Rules/Regulations: All exhibitors must furnish a paper plate HEAVY ENOUGH to hold the vegetables or fruits being displayed firmly.

Each crop display must be in a zip-lock type bag. Check with Superintendents if crop is too large for bagging. Each exhibit must be of the proper size, number, or weight as listed for the various classes, or be disqualified. PLEASE BRING INSECT-FREE PRODUCE.

Special Crops Award: Outstanding Youth, Adult, Senior Open Class exhibitors earning the most combined points in the fruit and vegetable divisions are awarded gifts by the Crops Superintendents. Points are earned for Grand Champion (7), Reserve Grand Champion (6), Champion (5), Reserve Champion (4), and Blue (3).

Angelo Iacovetto “Best Garlic Award”: All open class exhibitors with a garlic entry are eligible. The judges choice will determine the BEST GARLIC!

DIVISION A - FRUIT

Category 1 - Berries (display one pint on a plate and bagged)

J001 FB-currants, red/white, 1 pint

J002 FB-gooseberries, 1 pint
J003 FB-huckleberries, 1 pint
J004 FB-raspberries, 1 pint
J005 FB-service, 1 pint
J006 FB-strawberries, 1 pint
J007 FB-chokecherry, 1 pint

Category 2 - Apples

J011 FA-crabapples, plate of 6
J012 FA-fall apples, plate of 4
J013 FA-summer apples, plate of 4
J014 FA-open

Category 3 - Miscellaneous

J015 FM-cantaloupe, 1 whole
J016 FM-fruit pears, plate of 4
J017 FM-plums, plate of 6
J018 FM-rhubarb, 12 pieces
J019 FM-watermelon, 1 whole
J020 FM-oddities
J021 FM-other fruits
J022 FM-pie cherries 1 pint
J023 FM-apricots plate of 6
J024 FM-open

DIVISION B

Category 1 - Herbs & Seasonings (must be live, not dried plants or leaves)

J025 HS-cilantro
J026 HS-dill, 1 mature head
J027 HS-ginger root, 1 tuber
J028 HS-chive, 6 stems
J029 HS-basil, 1 stem
J030 HS-oregano, 1 stem
J031 HS-parsley, 1 stem
J032 HS-rosemary 1 stem
J033 HS-mint (peppermint/spearmint) 1 stem
J034 HS-specialty, mints (choc, lemon, pineapple, etc.) 1 stem
J035 HS-sage 1 stem
J036 HS-tarragon 1 stem
J037 HS-lemon balm 1 stem
J038 HS-thyme 1 stem
J039 HS-other 1 stem
J040 HS-open 1 stem

WEDNESDAY, AUGUST 14

Category 2 - Leafy Crops (enclosed for better displaying)

- J041 LC-broccoli, 1 large bunch
- J042 LC-brussels sprouts, 6 heads
- J043 LC-cauliflower, 1 head
- J044 LC-celery, 1 stalk
- J045 LC-chinese cabbage, 1 head
- J046 LC-green cabbage, 1 head
- J047 LC-red cabbage, 1 head
- J048 LC-head lettuce, 1 head
- J049 LC-green leaf lettuce, 6 leaves
- J050 LC-red leaf lettuce, 6 leaves
- J051 LC-Romaine lettuce, 1 head
- J052 LC-red kale, head or 6 leaves
- J053 LC-white/green kale, head or 6 leaves
- J054 LC-spinach, 6 leaves
- J055 LC-Swiss chard, 6 leaves
- J056 LC-heaviest cabbage
- J057 LC-Hops
- J058 LC-Open

DIVISION C

Category 1 - Onions (display amount indicated on a plate and bagged)

- J061 O-garlic, plate of 3
- J062 O-green, plate of 6 (6-inch tops)
- J063 O-red, plate of 4
- J064 O-white, plate of 4
- J065 O-yellow, plate of 4
- J066 O-leeks, plate of 4 (3-inch tops)
- J067 O-pearl, plate of 6
- J068 O-shallots, plate of 6
- J069 O-open

Category 2 - Other Vegetables (display amount indicated on a plate and bagged)

- J071 OV-bell peppers, plate of 3
- J072 OV-sweet or mild peppers, plate of 3
- J073 OV-hot chili peppers, jalapeno, plate of 3
- J074 OV-hot chili peppers, banana, plate of 3
- J075 OV-eggplant, plate of 1
- J076 OV-okra, plate of 3
- J077 OV-sweet corn, 4 ears husked
- J078 OV-sunflower, 1 mature head
- J079 OV-vegetable oddities

J080 OV-other vegetable

J081 OV-open

Category 3 - Pod Vegetables (display 1/2 pound)

- J086 PV-dry shelled beans
- J087 PV-fava beans
- J088 PV-green beans
- J089 PV-wax beans
- J090 PV-purple or speckled beans
- J091 PV-peas
- J092 PV-snow peas
- J093 PV-sugar peas
- J094 PV-other
- J095 PV-open

DIVISION D

Category 1 - Potatoes (display amount indicated on a plate and bagged)

- J101 P-largest quality potato, plate of 1
- J102 P-red potato, plate of 4
- J103 P-white potato, plate of 4
- J104 P-russet potato, plate of 4
- J105 P-sweet potato, plate of 4
- J106 P-other potato, plate of 4
- J107 P-open potato, plate of 4

Category 2 - Root & Tuber Crops (display amount indicated on a plate) crops; must be dirt-free and have 2-3-inch tops

- J111 RT-beets, plate of 4
- J112 RT-carrots, plate of 4
- J113 RT-parsnips, plate of 4
- J114 RT-radishes, plate of 4
- J115 RT-rutabagas, plate of 4
- J116 RT-turnips, plate of 4
- J117 RT-kohlrabi, plate of 4
- J118 RT-open

Category 3 - Squash (one per plate unless otherwise noted)

- J121 S-acorn
- J122 S-banana
- J123 S-buttercup or turban
- J124 S-butternut
- J125 S-gourds, 3

- J126 S-hubbard
- J127 S-pumpkin
- J128 S-scalloped
- J129 S-spaghetti
- J130 S-yellow summer
- J131 S-zucchini 8-inch
- J132 S-zucchini, baking more than 8-inches
- J133 S-other summer
- J134 S-other winter
- J135 S-heaviest zucchini

Category 4 - Vine Crops (bagged plate of 4 unless otherwise noted) Ripe tomatoes must have stems removed; green tomatoes must have stems attached.

- J141 V-cucumbers, slicing 6-inches plus
- J142 V-cucumbers, pickling 4-inches
- J143 V-cherry tomatoes (plate of 6)
- J144 V-green tomatoes, slicing
- J145 V-ripe tomatoes, slicing
- J146 V-pear shaped tomatoes
- J147 V-husk tomatoes
- J148 V-green cherry tomato (plate of 6)
- J149 V-Miscellaneous vegetable creation

WINE & BEER

Friday, August 16, 6pm, Exhibit Hall

Superintendent: Patrick & Tammie Delaney

The homemade wine and beer tasting, long a local favorite, will award Grand Champion and Reserve Grand Champion ribbons in each division. Competitors (who may enter more than one item per numbered category provided they are different flavors) are asked to bring one or two bottles for each entry.

Brewer's Choice Award

Yampa Valley Brewing Company brewers will judge the top entries in all qualifying categories (designated as: YVBC eligible) and present the Brewer's Choice Award. The winning entry will be brewed by Yampa Valley Brewing Company as next year's Routt County Fair Beer.

ENTRIES MAY BE DROPPED OFF AT THE EXHIBIT HALL BEFORE 6PM ON FRIDAY, AUGUST 16.

DIVISION A - Wine

- N001 Wine-red grapes & rose
- N002 Wine-white grapes
- N003 Wine-vegetable
- N004 Wine-flowers
- N005 Wine-dessert & sherry
- N006 Wine-apple
- N007 Wine-plum
- N008 Wine-cherry
- N009 Wine-other fruit
- N010 Wine-strawberry
- N011 Wine-raspberry
- N012 Wine-chokecherry
- N013 Wine-serviceberry
- N014 Wine-other
- N015 Wine-other (dessert, spiced, herbs, honey, fruits, etc.)

DIVISION B - BEER

- *N20 Light Lager (American light lager, Munich Helles, German Pilsner, American Pilsner) YVBC Eligible
- *N21 Amber/Dark Lager (American Dark Lager, Munich Dunkel, Schwarzbier) YVBC Eligible
- *N22 English and Scottish Ales (Mild, Bitter, ESB, Scottish Light, Scottish Heavy, Scottish Export)
- N23 English/Scottish/American Strong Ales (Strong Scotch Ale, Russian Imperial Stout, English Old Ale, English Barleywine, American Barleywine)
- N24 English/Scottish/American Dark Ales (Porter, Robust Porter, Baltic Porter, Stout, Oatmeal Stout, American Stout)
- *N25 American Ales (Cream Ale, Blonde Ale, Pale Ale, Amber Ale, Brown Ale) YVBC Eligible
- N26 India Pale Ale (American IPA, English IPA, Double IPA)
- *N27 Wheat Beers (German Wheat, American Wheat, Kolsch, Roggenbier) YVBC Eligible
- *N28 Belgian Ales (Witbier, Saison, Belgian Sour, Belgian Strong, Belgian Specialty) YVBC Eligible
- N29 Fruit/Spice/Specialty Beers (Fruit Beer, Spice Beers, Vegetable Beers, Smoke Beers, Wood-aged Beers, and any beer not fitting into the above categories)

DIVISION C - OTHER

- N040 Liqueurs

WEDNESDAY, AUGUST 14

N041 Root beer
N042 Soda pop

WOODWORKING

Superintendents: Barbara Cannizzo, Don Sperry

Age Groups: Junior, Teen, Adult, Adult Plus, Senior,
Senior Plus, Pro
2 entries/numbered category

Grand Champion and Reserve Grand Champion ribbons
may be awarded in each division and age category.

DIVISION A

Category 1 Lathe Worked Project

K001 Table Large (dining, patio, etc.)
K002 Table Small (end, child, etc.)
K003 Table with drawer (end, nightstand, etc.)
K004 Dresser with drawers
K005 Bookcase/cabinet (no doors)
K006 Chair (house, patio, child, etc.)
K007 Small home furnishing
K008 Decorative Item
K009 Other

Category 2 No Lathe Work

K010 Table Large (dining, patio, etc.)
K011 Table Small (end, child, etc.)
K012 Table with drawer (end, nightstand, etc.)
K013 Dresser with drawers
K014 Bookcase/cabinet (no doors)
K015 Chair (house, patio, child, etc.)
K016 Small home furnishing
K017 Decorative Item
K018 Other

Category 3 Refinished

K020 Large Piece
K021 Small Piece
K022 Other

DIVISION B

Category 1

K030 Carving Large
K031 Carving Small
K032 Decorative Box
K033 Instrument

K034 Scroll Saw Work
K035 Walking Stick
K036 Woodburning
K037 Other

Category 2

K040 Pinewood Derby
K041 Toy
K042 Item made from KIT
K043 Item NOT made from KIT
K044 Other

Elk River Pet & Ranch New Ownership Continues Support of Routt County 4-H



ELK RIVER PET & RANCH
STEAMBOAT SPRINGS, COLORADO

**We appreciate all our
Cash for Clubs participants**

www.ElkRiverPetandRanch.com
2680 Copper Ridge Cir. | Steamboat Springs, CO



Paul W. Stoll
General Contractor

SNAKE RIVER
CONSTRUCTION, INC.
(970) 879-0034
P.O. Box 773504 • Steamboat Springs, CO 80477

WEDNESDAY, AUGUST 14

WOOL

Superintendent: Linda Long

Fleeces may be entered at the Exhibit Hall on Wednesday, August 14 between 1-8 pm and will be judged on Friday, August 16. Wet or untied fleeces will not be judged. Both fleece and the bag must be marked with the exhibitor's name, breed of sheep, sex and registration number if registered. Fleeces meriting further competition can be entered in the National Western Stock Show's Wool Show. Clear or black plastic bag accepted. Fleeces entered in the Junior Wool must be shorn from ewes owned by the exhibitor and comply with the rules of the Open Wool Show. Number and type of entries will determine classes. Classes may be further divided as entries warrant.

L011 Open/Junior Class Farm Flock Fleeces (less than 600 head. Fleeces must be from ewes shorn in Routt County)

L021 Open/Junior Class Breed Fleeces

L031 Open/Junior

L040 Specialty Fleeces/Hair

4-H/FFA SWINE SHOW

**Superintendents: Yvonne Carrouth, Lane Iacovetto,
Connie Hawn**

**4-H/FFA Swine Showmanship
3pm (MPB)**

**4-H/FFA MARKET SWINE
Immediately following showmanship (MPB)**

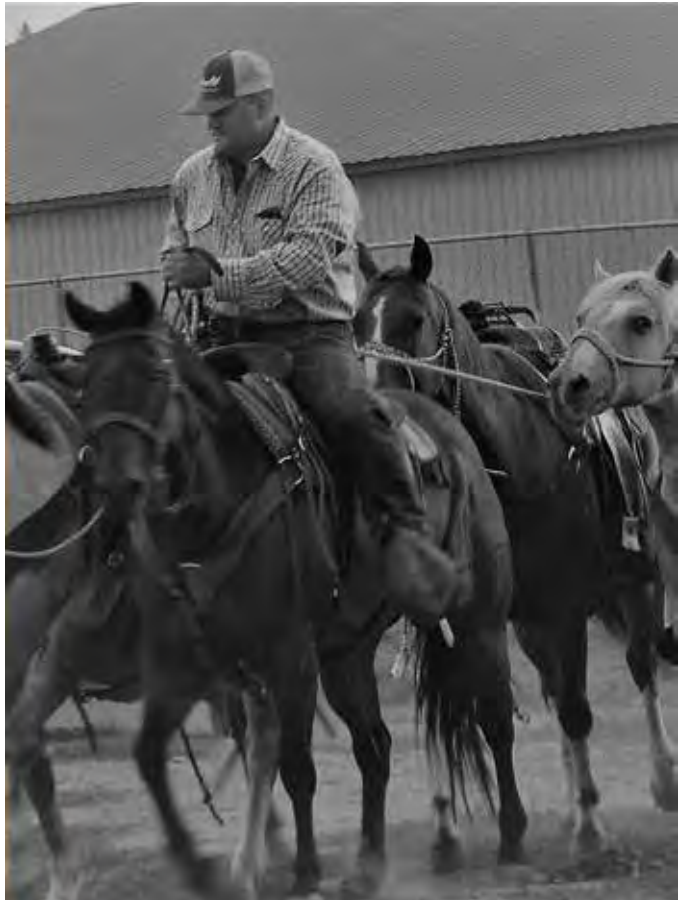
**FFA ALUMNI FUNDRAISER Meal
5-7pm (F)**

**Rocky Mountain Farmers Union
ICE CREAM SOCIAL
7-7:30pm (F)**

**OPEN JACKPOT TEAM ROPING
7:30pm (OA)**

Superintendent: Don Hayes, Jake & Amy Mahon
Breakaway limited to 15 contestants. Team roping is

open. Jackpot capped at #12. Enter up to 5 times, \$30 per rope/\$60 per team.



FAVORITE FAIR RECIPES

A sampling from the Routt County Fair Cookbook **FAIR FAMILY FAVORITES**

Routt County Fair Grand Champion Oatmeal Raisin Cookies

By: Charlene Barnes

Found in the Routt County Fair Cookbook, "Fair Family Favorites"

½ cup + 6 tablespoons butter, softened (divided)
¾ cup firmly packed brown sugar
½ cup granulated white sugar
2 eggs
1 teaspoon vanilla
1 ½ cups flour
1 teaspoon baking soda
1 teaspoon ground cinnamon
½ teaspoon salt
3 cups old fashioned oats (not quick)
1 cup raisins

Beat butter and sugars. Add eggs and vanilla. Combine flour, baking soda, cinnamon and salt; add to creamed mixture and mix well. Add oats and raisins, mixing thoroughly. Drop dough by rounded tablespoonfuls onto ungreased cookie sheets. Bake at 350 degrees about 8-10 minutes, or until light golden brown. Cool 1 minute on cookie sheet, then remove to a wire rack. Cool completely. Store tightly covered. Don't overcook these cookies. You may omit raisins and add coconut and nuts.

Note: These cookies won Blue, Champion and Grand Champion ribbons, as well as honors in the Commissioners Cooke Contest at the Routt County Fair!

OK's Breakfast Sausage

By: Rick Spencer

Found in the Routt County Fair Cookbook, "Fair Family Favorites"

10 pounds pork trimmings (75% lean)
5 tablespoons salt
1 tablespoon white pepper
2 tablespoons rubbed sage
1 tablespoon nutmeg

1 tablespoon thyme
1 tablespoon hot red pepper
1 pint ice water

Cut meat into strips or chunks; trim and then coarse grind the meat. Blend seasonings. Blend seasonings into meat and mix by hand for 2-3 minutes until tacky. Add ice water to level of consistency desired. Fry small sample to test; modify if needed. Mix 1-2 more minutes. Grind through medium meat grinding plate. Stuff this sausage into casings if desired.

Note: Many a local porker was made into this delicacy, says Rick Spencer. His parents, Keith and Darlene, owned OK's Meat Market from 1968-1999. They took great pride in supporting the local 4-H kids at the Routt County Fair and purchased animals at the Junior Livestock Sale for 39 years. Darlene passed away in 1974 followed by Keith 2017.

Eggplant Au Gratin

Mrs. E.F. Carpenter

Found in the Routt County Fair Cookbook, "Fair Family Favorites"

1 large eggplant
2 onions
1-2 cups celery
1-2 teaspoons Kitchen Bouquet
1 tablespoon butter
2 tablespoons olive oil
1 cup bread crumbs
Salt and pepper

Peel and parboil eggplant. Add onions and celery. Chop together. Add seasoning, cover with bread crumbs. Bake 1-2 hours in hot oven.

Note: Ferry Carpenter was honored as the Grand Marshal of the Routt County Fair parade in 1971. Mrs. E.F. Carpenter's recipe was featured in the second edition of "How We Cook in Colorado," compiled by the Hayden Woman's Club in 1935.

THURSDAY, AUGUST 15 EVENTS
EXHIBIT HALL, VENDORS & MIDWAY OPEN,
INFLATABLE RIDES

4-H/FFA RABBIT & CAVEY SHOW

4-H Superintendents: Roger & Nancy Muhme

Classes are established according to the ARBA standards for judging (although this is NOT an ARBA sanctioned show).

Rabbit classes are divided into classes by breed, color, sex and age. The Rabbit Meat Pen must consist of three of the same breed, weighing between three to five pounds each and not more than 75 days old. The meat pen can be any heavy breed or cross breed and the Grand Champion may be sold at the Junior Livestock Sale.

4-H/FFA RABBIT SHOWMANSHIP

8am (SAB)

Senior Rabbit Showmanship

Intermediate Rabbit Showmanship

Junior Rabbit Showmanship

4-H/FFA RABBIT CLASSES

Immediately following showmanship (SAB)

Breed Classes

Meat Pen

Grand Champion Rabbit

4-H/FFA CAVEY SHOWMANSHIP

Immediately following Rabbit Classes (SAB)

Senior Cavey Showmanship

Intermediate Cavey Showmanship

Junior Cavey Showmanship

4-H/FFA CAVEY CLASSES

Immediately Following Cavey Showmanship (SAB)

Breed Classes

Grand Champion Cavey

OPEN RABBIT AND CAVEY SHOW

Immediately following 4-H/FFA Show (SAB)

No exhibitor may have more than two entries in a class. Classes may be added when there are three or more entries in an unlisted breed.

Classes will be established according to the ARBA standards for judging (although this is NOT an ARBA sanctioned show). Rabbit classes will be divided into classes by breed, color, sex and weight.

Classes: Rabbit, Cavey

FUTURE ROYALTY EXPERIENCE

Time TBD (MPB)

Must be 5-14 years old, activity is FREE, but requires registration. Ever wonder what it is like to be an ambassador for your hometown fair? Spend half a day with your current Routt County Fair Royalty to help hand out ribbons, tour the fairgrounds, and learn some tips and tricks of the trade. To sign your child up, call 970-846-9491 or visit the Fair office or the 4-H office before August 14.

HOME ARTS JUDGING

9am (EH)

F.M. LIGHT & SONS AG EXPERIENCE

10am-6pm (LB)

An interactive learning exhibit at the Routt County Fair to help promote a better understanding of the importance of agriculture and the food production system in Routt County. Routt County 4-H clubs are putting together a hands on exhibit for this space. In addition, 4-H Jr. Leaders are hosting games twice a day, species tours for families and putting together a scavenger hunt on the fairgrounds.

4-H/FFA GOAT SHOW

4-H Superintendents: Hollie Sutton, Kristen Coriveau, Shari Yeager

Special Recognition, Awards and Opportunities for Goats

Goat Producers Contest: For 4-H and FFA members showing Routt County Raised goats at the Routt County Fair. (Routt County Raised is defined as born and raised in Routt County) This is a producer or ranch award. Youth, with permission from the local producer, may enter their goat in the producer competition. The competition will be 1/3 live animal placing in respective market class, 1/3 rate of gain, and 1/3 carcass data. Rate of gain

THURSDAY, AUGUST 15

will be determined by May and Fair weights, and carcasses will be evaluated using guidelines from the America Meat Science Association. A plaque will be awarded to the producer/ranch at the Routt County 4-H Achievement Night.

Routt County Raised Goat Carcass Contest – sponsored by Hollie Sutton. This award is offered to the top Routt County Raised (born and raised in Routt County) Goat Carcasses. This award will be given at the Carcass Contest in September.

BREEDING, DAIRY, UTILITY & FIBER GOAT SHOW **11am (MPB)**

Utility Goat, Goat Breeding Dairy Classes (Goat classes may be combined/changed based on entries at the superintendents discretion.)

Utility Goat Show

Dairy Buck 0-12 months - Full Size Breeds
Dairy Buck 0-12 months – Nigerian
Dairy Doe Kid 0-6 months - Full Size Breeds
Dairy Doe Kid 0-6 months – Nigerian
Dairy Doe Kid 6-12 months - Full Size Breeds
Dairy Doe Kid 6-12 months - Nigerian
Dairy Doe 12-24 months - Full Size Breeds
Dairy Doe 12-24 months – Nigerian
Dairy Doe 2 years and over - Full Size Breeds
Dairy Doe 2 years and over – Nigerian
Dairy Dam and Produce - Full Size Breeds
Dairy Dam and Produce – Nigerian

Goat Breeding Pygmy Breed Classes

Pygmy Breeding Bucks, 0-12 months
Pygmy Does 0-6 months
Pygmy Does 6-12 months
Pygmy Does 12-24 months
Pygmy Does 1-2 years
Pygmy Does 2 years and over
Pygmy Dam and Intact Producer

Goat Breeding Fiber Classes

Fiber Buck 0-12 months
Fiber Doe Kid 0-6 months

Fiber Doe 6-12 months
Fiber Doe 12-24 months
Fiber Doe 2 years and over
Fiber Dam and Produce

Non-Market Goat Showmanship

Non-market Goat Showmanship winners will compete in the Small Animal Round Robin. These classes include Dairy, Pygmy, Fiber & Utility classes.

Immediately following Non-Market Goat Show (MPB)

Goat Breeding Meat Classes
Breeding Meat Buck 0-12 months
Breeding Meat Doe Kid 0-6 months
Breeding Meat Doe Kid 6-12 months
Breeding Meat Doe 12-24 months
Breeding Meat Doe 2 years and over
Breeding Meat Dam and Produce

Market/Market Breeding Goat Showmanship

Market/Market Breeding Goat Showmanship winners will compete in the Large Animal Round Robin.

MARKET GOAT SHOW

Immediately following Market/Market Breeding Goat Showmanship (MPB)

BUM LAMB CONTEST

2:00pm (MPB)

The bum lamb event is open to all Routt County youth ages 3-7 who are raising a current year bum (orphaned) lamb.

4-H/FFA SHEEP SHOW

Superintendents: Kristen Corriveau, Lysa Long

Special Recognition, Awards and Opportunities for Lamb

Lamb Producers Contest: For 4-H and FFA members showing Routt County Raised lambs at the Routt County Fair (Routt County Raised is defined as born and raised in Routt County) This is a producer or ranch award. Youth, with permission from the local producer, may enter their lamb in the producer competition. The competition will be 1/3 live animal placing in respective market class, 1/3 rate of gain, and 1/3 carcass data. Rate

of gain will be determined by May and Fair weights, and carcasses will be evaluated using guidelines from the America Meat Science Association. This award will be presented at the Routt County 4-H Achievement Night.

Lamb Production Contest: This contest is open to Routt County 4-H and FFA members involved in the market lamb project for the current year. The scores are compiled from the animal's live placing at fair, record book score, rate of gain and carcass score. Awards premiums to the top three finishers, which are announced at the Routt County 4-H Achievement Night.

The Howard & Maxine Elliott Memorial Sheep Breeding Project Fund offers premiums to encourage youth participation in the Sheep Breeding project. This fund is used to reward outstanding ewes, rams and flocks exhibited at the Routt County Fair by 4-H and FFA members. The premiums are awarded at the Routt County 4-H Achievement Night.

The Brenner family Breeding Sheep Award offers premium money in the amount of \$500 to 4-H/FFA members who participate in Routt County Fair sheep breeding class Brenner Family Class - Ewe-Market Lamb (shown at the current year county fair). Youth will be awarded based upon their placings in the Brenner Family Class - Ewe-Market Lamb, exhibitor interview, record book score and showmanship. Ewe must be bred, wintered and cared for in Routt County by the 4-H member to be eligible for this award. The premiums will be awarded at the Routt County 4-H Achievement Night in November.

Routt County Raised Lamb Carcass Contest – sponsored by the Routt County Wool Growers. This award is offered to the top ten Routt County Raised (born and raised in Routt County) lamb Carcasses.

4-H/FFA BREEDING SHEEP SHOW 2pm (MPB)

Meat Breed Ewe Lamb (born after January 1st of current year)

Meat Breed Yearling Ewe (born between Jan. 1 and Dec. 31 of last year)

Meat Breed Aged Ewe (2 years of age or older)

Meat Breed Ewe & Breed Lamb (must be ewe's offspring)
Meat Breed Ram Lamb (born after January 1st of current year)

Meat Breed Yearling Ram (born between Jan. 1 and Dec. 31 of last year)

Meat Breed Ewe-Market Lamb-Brenner Family Class
Brenner Family Premium Classes: (following meat breed classes)

*Ewe can be shown with twins/triplets as long as one offspring is entered in the Market Lamb class

Meat Ewe and Market Lamb (lamb must be weighed in and shown in market lamb class)

Wool Ewe and Market Lamb (lamb must be weighed in and shown in market lamb class)

Wool Breed Ewe Lamb (born after January 1st of current year)

Wool Breed Yearling Ewe (born between Jan. 1 and Dec. 31 of last year)

Wool Breed Aged Ewe (2 years of age or older)

Wool Breed Ewe & Breed Lamb (must be ewe's offspring)

Wool Breed Ram Lamb (born after January 1st of current year)

Wool Breed Yearling Ram (born between Jan. 1 and Dec. 31 of last year)

Wool Breed Ewe-Market lamb-Brenner Family Class

4-H/FFA SHEEP SHOWMANSHIP Immediately follows Breeding Sheep Show (MPB)

4-H/FFA MARKET LAMB SHOW Immediately following Sheep Showmanship (MPB)

ROCKIN' ROUTT ROYALTY RECOGNITION DINNER

Time and Location TBD

All previous Routt County Fair Royalty is invited, requires RSVP. Calling ALL previous Routt County Fair Royalty members! Any and ALL previous royalty are invited to dinner provided by the current court. Come relax, reminisce, and enjoy dinner on us! Stick around for the bonfire and concerts with dessert on us too!

THURSDAY, AUGUST 15

HORSE RACES

6:30pm (T)

Superintendent: Bethany Aurin, Tina Decker

For well over 100 years, horse racing has been a prominent pastime in the Yampa Valley; originally the Ute Indians raced along the banks of the Yampa and lower Elk rivers. With the arrival of beef cattle, many ranchers also began to host match races during their brandings and ranch rodeos. Chariot races also became extremely popular beginning in the late 1940's and early 1950's.

The Routt County Fair has continued this great tradition by including horse races every year during the fair. This year, there will be two age divisions and all are welcome to participate. To honor our ranching heritage, all participants must ride in a stock saddle. Match races will be run and the fastest two times will compete against each for a buckle and a cash award (riders under 18 years old must wear a helmet).

BEER GARDEN

6:30pm (OA)

CHEERS TO 105 YEARS BONFIRE

7pm (OA)

Sponsor: Mountain Valley Bank, Rogue Resources

Superintendent: Jill Delay

Gather 'round the BONFIRE for some great live music and cowboy poetry! Sometimes simple is better. Feel free to bring your camp chair and have your kids bring their favorite sand box toy. We will have the main bonfire and a smaller one for those teens that just don't want to hang out with their parents. We will have a sand box piled high for the little ones to pass the time while their folks enjoy some great entertainment. Heck, we might even make some s'mores! It's all FREE thanks to our sponsors!

7-7:30pm Cowboy Poetry with Susie Knight

7:30-8:30pm Local Favorite Trevor Guire

8:30-9pm Cowboy Poetry with Susie Knight

9-11pm Kyle Allgood



FRIDAY, AUGUST 16 EVENTS
EXHIBIT HALL, VENDORS & MIDWAY OPEN,
INFLATABLE RIDES

EXHIBIT HALL OPENS
8am (EH)

4-H/FFA LLAMA SHOW
9am (MPB)

4-H Superintendent: Nancy White

The llama show is open to all 4-H and FFA members who have participated in the llama project for the current year.

Showmanship (all ages)
Trail (all ages)

CLOVERBUD FOR A DAY
9am -12pm (EH)

For day care centers and home child care groups by appointment only! Come on down to the fairgrounds for a country good time. Take a tour of the grounds; see the pigs, lambs, steers, bunnies, horses, chickens, turkeys and other livestock. Enjoy Mountain Valley Bank's Ride Free Fun Friday!

F.M. LIGHT & SONS AG EXPERIENCE
9am-6pm (LB)

An interactive learning exhibit at the Routt County Fair to help promote a better understanding of the importance of agriculture and the food production system in Routt County. Routt County 4-H clubs are putting together a hands on exhibit for this space. In addition, 4-H Jr. Leaders are hosting games twice a day, species tours for families and a scavenger hunt on the fairgrounds.

DRESS YOUR ANIMAL CONTEST
10am (MPB)

Superintendent: Bethany Aurin, Ben Vannoy

Open to everyone, the dress your animal contest is a fun competition that allows youth and adults to dress themselves and animals to a specific theme. A commentary will be read as the contestant parades themselves and their animal in the show ring.

Rules: This contest is open to all youth and adults in

Routt County. Animals may be any pets or live-stock, preferably led or carried into the ring. Unsafe animals will be asked to leave the ring. Participants must prepare a 200 word or less commentary that will be read as the exhibitor parades in the show ring. All commentaries and entries must be turned in by 9am, one hour before the contest to the 4H Office (in the northeast corner of the MPB).

The contest is judged on the following criteria:

Commentary 10 points

Overall Creativity 20 points

Uniformity between participant and animal 20 points

Handling ability of animal 10 points

Awards will be given by age division, not species of animals.

Classes: All Ages as of January 1st of the current year. (Classes may be combined or changed at the discretion of the superintendents)

Mini Youth up to age 7

Junior age 8-13

Intermediate age 14-18

Open Class 18 and up.

HERITAGE DEMONSTRATIONS
10am-4pm (EH)

Sponsor: Community Agriculture Alliance

Watch the history of agriculture and western heritage come alive through volunteer demonstrations.

MOUNTAIN VALLEY BANK'S RIDE FREE
FUN FRIDAY!

11am-7pm (midway)

Enjoy all the excitement of the inflatable entertainment for FREE until 7pm Friday courtesy of Mountain Valley Bank.

4-H/FFA BEEF SHOW
4-H Superintendents: Jeannie Jo Logan, Lee Meyring DVM

Special Recognition, Awards and Opportunities for Beef members.

FRIDAY, AUGUST 16

Don and Eileen Lufkin offer premiums to encourage youth participation in the Beef Breeding project. This fund is used to award outstanding cows, heifers, and pairs exhibited at the Routt County Fair by 4-H and FFA members. The premiums will be awarded at the Routt County 4-H Achievement Night.

Beef Producers Contest: For 4-H and FFA members showing Routt County Raised steers at the Routt County Fair (Routt County Raised is defined as born and raised in Routt County). This is a producer or ranch award. Youth, with permission from the local producer, may enter their steer in the producer competition. The competition will be 1/3 live animal placing in their respective market classes, 1/3 rate of gain, and 1/3 carcass data. Rate of gain will be determined by February, and Fair weights and carcasses will be evaluated using guidelines from the America Meat Science Association.

BUCKET CALF SHOW

12pm (MPB)

Bucket Calf (open to 4-H/FFA exhibitors enrolled with a bucket calf for the current year).
Open Show Bucket Calf immediately following 4-H/FFA Bucket Calf Show

4-H/FFA DAIRY SHOW

12:30pm (MPB)

Calf, Heifer, Cow (2+ years), Dairy Steer

4-H/FFA BEEF BREEDING SHOW

Immediately following the Dairy Show (MPB)

Cow & Calf (calf must be nursing dam, judge and superintendents option to split based upon birth date of calf)

Calf (may be split into bull, heifer, and steer classes)

Yearling Heifers (judge and superintendents option to split based upon birth date)

Cows 2+ years

Grand and Reserve Champion Breeding Female

4-H/FFA BEEF SHOWMANSHIP

2pm (MPB)

Senior

Intermediate

Junior

4-H/FFA MARKET BEEF

**Immediately following Beef Showmanship
(MPB)**

SWEET 'N SPICY CONTEST

5pm (EH)

Sponsor: Circle K Ranch

Superintendents: Nancy Mucklow, Jody Camilletti
Bring your favorite tasty crowd pleasers to impress our celebrity judging panel made up of local community and government leaders and the Routt County Fair Parade Marshals!

Sweet: Dust off your favorite Dessert Recipe for something SWEET and tasty. Bring a display of 12 servings for tasting by our celebrity judges!

Spicy: Create a batch of your fresh, homemade salsa (prepared in advance) and wow our celebrity judges with your spicy culinary talent! Bring one pint (2 cups) of your salsa for tasting! We'll provide the chips!

Overall Contest Rules:

Product must be homemade, not restaurant or store bought. Salsa must be fresh. No preserved, canned salsas will be accepted. Transport and maintain product at appropriate, food safe temperature.

Entries will be accepted from 4:30-4:55pm on contest day. Judging will begin at 5 pm. Chips for salsa will be provided.

Judging will be based on:

Appearance

Consistency

Flavor

CREATIVITY will be rewarded!

TASTE OF THE FAIR BAKE SALE

5pm (EH)

Sponsor: Routt County Fair Cookbook Committee

Superintendents: Nancy Mucklow, Jody Camilletti

Bake Sale donations will be accepted for TASTE OF THE FAIR on Wednesday from 1-8pm and on Friday from 4:30-4:55pm pm at the Exhibit Hall. BRING AN EXTRA BUNCH OF YOUR BAKED GOODs FAIR ENTRIES (think cookies, cakes, pies, brownies, anything bake sale yummy!) and we'll trade these donated goods for a "donation" on Friday at the TASTE OF THE FAIR. Proceeds go to the Routt County Fair Cookbook Committee and help support prizes awarded in each category in the Routt County Fair Exhibit Hall Open Show. The committee also uses proceeds for Exhibit Hall improvements!

WINE & BEER CONTEST 6pm (EH)

Superintendents: Patrick & Tammie Delaney

The homemade wine and beer tasting, long a local favorite, will award Grand Champion and Reserve Grand Champion ribbons in each division. Competitors are asked to bring one or two bottles for each entry.

ENTRIES MAY BE DROPPED OFF AT THE EXHIBIT HALL BEFORE 6PM ON FRIDAY, AUGUST 16.
(For Divisions, see Home Arts Section)

HILL PETROLEUM DEMOLITION DERBY

**(Includes: PIG WRESTLING, STICK HORSE
RODEO, BEER GARDEN, Royalty Crowning during
intermission)**

7:30pm Tickets Required (T & OA)

Sponsor: Hill Petroleum

Superintendents: Ben Vannoy, Don Hayes

Tickets: General admission seating in the grandstands and some limited seating on the track. Tickets also allow access to beer garden for those of legal age. \$17 Adult (9 years +), \$12 Youth (4-8 years), free for those 3 years and under as long as they sit on a lap. NO CARSEATS, NO STROLLERS, LAPS ONLY.

Rules: All racers are required to wear helmet, gloves,

over-the-ankle boots, safety glasses and long sleeve shirt minimum. Tether or seat switch must be in working order for safety for all.

BEER GARDEN

6:30pm-10pm

Access to the beer garden is only available to those with a grandstand ticket for the arena entertainment. The beer garden is hosted by Hayden Parks & Recreation as a fundraiser.

STICK HORSE RODEO

**Superintendent: B.J. Diehl, Routt County Fair
Royalty**

The third annual Routt County Fair Stick Horse Rodeo will be held during intermissions during the Demolition Derby on Friday August 16. We encourage all kids between the ages of 4 and 10 that are attending the demolition derby to come on down and join us! A waiver will need to be signed by a parent to participate. There will be stick horse barrel races, bronc riding, and bull riding! The stick horse rodeo is put on by your local Routt County Fair Royalty Court. Hope to see you there!

PIG WRESTLING

Sponsor: Flat Tops Ranch Supply

Superintendent: Lane Iacovetto, Lynn Powell

During intermission of the Demolition Derby just prior to the Grudge Match. Teams of four have exactly one minute to put a pig in a barrel, 80% payback.

Entry fee is \$50 per team teams are limited. Entries close when full or Friday, August 16 at noon. Entries are not accepted unless ALL paperwork is complete and fee is paid. Sign up at the Fair Office in the Exhibit Hall. Teams are divided into Intermediate (9-15 years); Women (16 years and older); Men (16 years and older). Team members are required to sign a waiver (members under 18 years MUST have waiver signed by parent or legal guardian).

DEMOLITION DERBY

Demolition Derby is a generation-binding, intense,

non-stop, heavy metal mayhem of collisions; a nerve wracking, knuckle busting prep in the pits where men and women cage their fury and unleash it when they hit the dirt. It is a contest where cars compete to be the last one moving. Audiences are treated to the pandemonium of cars crashing into one another. This event promises dents, dings, dirt, and destruction, everything that audiences expect from a Demolition Derby. Get up close and personal with the cars and drivers with a Pit Pass (pit pass has no access to beer garden).

Theme Car Contest!

Contest is judged entirely by the audience's reaction. Pick your favorite car and cheer as loud as you can!



EST. 1980

the Fence Post

THEFENCEPOST.COM

f t i

Celebrating Our Rural Lifestyle

Local, national, and international livestock industry news

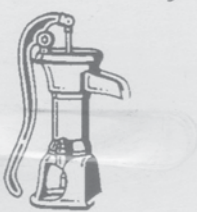
Livestock Auction Reports
Award-Winning Columnists
Classifieds • Special Interest Sections
and much more!

\$45 OR **\$80**

ONE YEAR TWO YEARS

CALL TOLL-FREE: 1-800-275-5646

*\$80 for 124 issues (2 years) and \$45 for 62 issues (one year) rate valid for all new and renewing subscribers. Special rate not dependent on length of subscription. Must call 800-275-5646 to subscribe at this rate. Subscribers will be billed one time at \$80 for 124 issues or \$45 for 62 issues. All subscriptions include full digital access to our online edition at www.thefencepost.com. A secure library from all of us here at The Fence Post.



B & J Pump & Well Service

Est. 1983

1280 13TH ST., UNIT F, P.O. BOX 772740
STEAMBOAT SPRINGS, CO 80477
(970) 879-6132 FAX (970) 879-8770
bjpump@myexcel.com
CO. LIC. #1107

BOB BROWN, PRESIDENT

"B-N-JOYFUL"





*Proud to support
the
Routt County Fair!*

RESORT LODGING COMPANY



Resort Lodging Company, we are a hard working team of dedicated individuals that have a servant heart and know how to get things done while having lots of fun. We offer nightly rentals in studios to five bedroom homes. Proud managers of the following properties:

TORIAN PLUM



CIMARRON



970-761-2355 • resortlodgingcompany.com

COOK



Thanks for buying locally



970-824-9441
801W. Victory Way
Craig, CO



970-879-3900
W. US HWY 40
Steamboat Springs, CO



970-824-2100
1776 W. Victory Way
Craig, CO

A proud leader of community and non-profit support
in the Yampa Valley for over 50 years.

www.cook-cars.com



**FOR ALL YOUR FARMING,
RANCHING AND 4H SUPPLIES**

SATURDAY, AUGUST 17 EVENTS

EXHIBIT HALL, VENDORS & MIDWAY OPEN, INFLATABLE RIDES

EXHIBIT HALL OPENS 8am (EH)

4-H/FFA ROUND ROBIN SHOWMANSHIP 8:30am (MPB)

4-H Superintendent: Millie Delaney

A culmination of months of showmanship practice for both youth and their animals is demonstrated in this final showmanship class. The top six showmen from beef, sheep, swine, horse, rabbit, poultry, goat, and dog compete as they rotate among species (divided into small and large animal categories). There must be at least three winners in each species in order for that species to participate. All round robin awards will be presented at 4pm Saturday. Contestants must be Grand or Reserve Grand Champion to participate (possibly third runner up). Thank you to American Ag Credit for sponsoring our large animal round robin awards.

LION'S CLUB PARADE 9:30am judging

10am parade (downtown Hayden)

The Hayden Lions Club sponsors the parade and this year's theme is "Cheers to 105 years" Everyone loves a parade and the march down highway 40 has long been a weekend highlight for young and not so young. Entry forms must be returned no later than Wednesday, August 14 at 5pm. Late entries may be hand-delivered at the Hayden High School west entrance on Saturday, August 17 at 8:30am. Return entries to: "Routt County Fair Parade, PO Box 906, Hayden, CO 81639. For information please call Jake at 970-846-6593.

F.M. LIGHT & SONS AG EXPERIENCE 10am-4pm (LB)

An interactive learning exhibit at the Routt County Fair to help promote a better understanding of the importance of agriculture and the food production system in Routt County. Routt County 4-H clubs are putting together a hands on exhibit for this space. In addition, 4-H

Jr. Leaders are hosting games twice a day, species tours for families and a scavenger hunt on the fairgrounds.

TOWN OF HAYDEN'S RIDE FREE SUPER SATURDAY

11am-7pm (midway)

Enjoy all the excitement of the inflatable entertainment for FREE until 7pm Saturday courtesy of the Town of Hayden.

YVEA's MUTTON BUSTIN'

Saturday, 11am (T) • Sunday, 11am (T)

Sponsor: Yampa Valley Electric Association
Superintendent: B.J. Diehl

Entry Fee: \$10. Welcome to the world of Mutton Bustin', also known as wool riding. This event is a version of Bronc Riding, transformed into a children's rodeo event when kids try to ride a sheep for up to 6 seconds. Mutton Bustin' is open to kids between the ages of 4-8 years old who are 70 pounds or less. Space is limited to the first riders that sign up and pay the \$10 entry fee. Your spot is not reserved until a parent or legal guardian signs the waiver and pays the entry fee. Participants must sign up in person at the Fair Office during the week of fair. Entries close when full or Friday at noon. Participants and at least one parent must show up at the west end of the grandstands on the track no later than 10:45am. Gear, including a protective vest and a helmet with face guard, are provided.

A second session will run Sunday at 11am. Participants and at least one parent must show up at the west end of the grandstands on the track no later than 10:45am.

YOUTH & OPEN BARREL RACE 12pm (OA)

Superintendent: Bethany Aurin, Tina Decker

General Barrel Racing Rules: Accepted NBHA barrel racing practices will govern. A "no time" will be given to the contestant if they break the clover-leaf pattern or knock over a barrel. A run with penalties will be treated as a "no time." Contestants should be ready to compete when their name is called. If a contestant is not present when their name is called, they will receive two additional gate

SATURDAY, AUGUST 17

calls and will then receive a “no time.” If a contestant is present, but fails to start the clock within 60 seconds of their first gate call, they will receive a “no time.” Electronic timers shall be used. In the event of a timer failure; the contestant will be given a re-run at the end of the draw.

Inhumane, cruel or abusive treatment of a horse at this event will not be tolerated. This will include, but is not limited to, excessive use of a bat, crop, whip, or rope in front of the cinch, use of an electric prod, or use of unacceptable drugs. Any attempt to fix or throw a barrel race will not be tolerated. Any harassment or argumentativeness with a show official may be warrant for disqualification. Any misconduct, including but not limited to those items listed above, shall be brought to the attention of the Routt County Fair Advisory Board for consideration and appropriate action. Appropriate action may include removal from the Routt County fairgrounds, fines, loss of awards/money or expulsion.



Open 4-D Barrel Race: Entry fee \$25 per horse with a one-time office fee of \$10. NO EXHIBITIONS. Pre-entries are required to be turned in to the Fair Office (inside the Exhibit Hall at the Fairground) by Friday, August 17th at 5pm. Late entries will be taken on Saturday August 17 until 10am with a \$10 late fee.

Divisions - The 1D will be set by the fastest time of the barrel race; 2D ½ split, 3D ½ split, 4D one second split. Money or awards will be given in each division.

Youth 3D: Age 8-18 as of January 1. Entry fee \$25 per horse with a one-time office fee of \$10.

Divisions – The 1D will be set by the fastest time of the barrel race; 2D and 3D will be one-second split. Money or awards will be given in each division.

Pee Wee Class: Age 7 and under as of January 1. Entry fee \$5 per kid. Money or awards will be given in each division. Prizes will be awarded.

MINI-BRONC BUSTIN'

Immediately follows Open Barrel Race (OA)

Sponsor: Bear River Valley Co-op, Outlaw Environmental

Superintendent: Don Hayes, Tina Decker

Entry fee: \$20. These exciting minis bridge the gap between the mutton busters and the big time rodeo cowboys, planting the seeds for tomorrow's champions.

Riding and safety equipment are provided. Spur rows must spin freely. Riders hold the bareback riggin' with one hand for 6 seconds and cannot touch with their free hand. Mark out and spur rules do not apply, however extra points will be awarded when earned.

All mini-bronc busters must be between 7 and 14 years old. Space is limited to the first riders that sign up and pay the \$20 entry fee. Your spot is not reserved until a parent or LEGAL guardian signs the waiver and pays the entry fee. PARTICIPANTS MUST SIGN UP IN PERSON WITH PARENT AT THE FAIR OFFICE DURING THE WEEK OF FAIR. Rocky Mountain Mini Bronc staff will assist matching contestants with animals.

YOUTH BULL RIDING

Immediately follows Mini Broncs (OA)

Sponsor: Murdochs Ranch & Home Supply

Superintendent: Don Hayes

Entry Fee: \$25. There are two groups of Junior Bull Riders: Ages 8-11 and Ages 12-18. Space is limited to the first riders that sign up and pay the \$25 entry fee. Your spot is not reserved until a parent or legal guardian signs the waiver in person at the fair office and pays the entry fee. Buckle awarded to the winner.

Rules/Requirements: Protective helmets and vests provided. Mouthpieces are recommended and must be provided

by contestants. Participants can bring their own equipment and are encouraged to do so. Riders cannot touch the animal with their free arm or they are DQed, no wraps, gloves may be worn to help hold on the braided bucking rope strap, no sharp rowls on spurs and rowls must have turn movement. Time starts when rider nods and the shoulder of animal breaks plane of gate. There is no mark out rule. Riders may only ride with one hand. PARTICIPANTS MUST SIGN UP IN PERSON WITH A PARENT AT THE FAIR OFFICE DURING THE WEEK OF FAIR. Entries close when full or Friday at noon. Participants and at least one parent must show up at the secretary's office (below the south crows nest) no later than 11am on Saturday.

HERITAGE DEMONSTRATIONS

1-3pm (EH)

Sponsor: Community Agriculture Alliance

Watch the history of agriculture and western heritage come alive through volunteer demonstrations.

4-H PRESALE/BOBBY ROBINSON MEMORIAL BBQ

3pm (F)

Sponsor: Steamboat Motors, The Auction Team – Graig Medvesk, Yampa Valley Bank, Steamboat Pilot/Today, Colorado Event Rentals, Yampa Valley Electric Association

BBQ and Entertainment: The barbecue is a long-standing Routt County tradition, pre-dating the Fair by one year. It was first held in October 1913 when the Town of Hayden hosted a wild game feast to greet the arrival of the Iron Horse. The Railroad Day barbecue - elk and bear meat - immediately became the largest annual gathering in Northwest Colorado. Between 1949 and 1989, when Hayden contractor and Chef Bobby Robinson Sr. presided over the grills, he insisted the "secret" to the incredible sauce was slow water and whiskey. Since 4-H clubs began hosting the event, the barbecue has become a major 4-H fund raising event and an opportunity for youngsters to say thank you to purchasers at the Junior Livestock Sale.

Live music provided by the Yampa Valley Boys. The Yampa Valley Boys are in their thirteenth year of delight-

ing audiences. Their friendly, infectious stage presence reaches out to any audience to make their show seem as intimate as a campfire sing-along.

BBQ prices: \$6 (12 years and younger), \$10 (13 years and older).

KRAI FREE COKE FLOATS DURING THE BBQ 3pm (F)

JUNIOR LIVESTOCK SALE 4:30pm (MPB)

Sponsor: Steamboat Motors, The Auction Team – Graig Medvesk, Yampa Valley Bank, Steamboat Pilot/Today, Colorado Event Rentals, Yampa Valley Electric Association

When you purchase an animal at the Junior Livestock Sale you receive a high quality product, and are able to give financial aid to Routt County's youth. It is estimated that over 80% of the money earned from the Junior Livestock Sale is put toward higher education or building future livestock enterprises. Your purchase is an investment in the future of Routt County Youth!

In 2018 the outstanding supporters of our community spent \$441,896 on 147 head at the livestock sale. Beef averaged \$5,221, Lambs averaged \$1,799, Goats averaged \$1,165, and Swine averaged \$2,617. The animals you purchase are high quality 4-H and FFA beef, lamb, goat and pork. They meet or exceed the quality of meat you buy in the store. You can be assured you will get a quality product. Furthermore, you decide how you want your meat processed - how many servings per package, thickness of the steaks, etc. Completely hassle free. Livestock are transported to the locker plant of your choice (Mountain Meat Packing in Craig, Brothers Processing in Craig, Hammers in Yampa or AGP in Craig.). All you have to do is call the processor and specify your needs.

Most commonly, people use their purchases for home consumption. 4-H and FFA beef, lamb, goat and pork make excellent gifts for friends or business associates. At the time of purchase, you can also donate meat to any worthy organization. In the past, buyers have donated to organizations such as the Casey's Pond, The Haven,

SATURDAY, AUGUST 17

Horizons, Advocates Building Peaceful Communities, and Lift-up Food Bank. You will be requested to pay for the processing cost of the meat. For consignor rules, see the Routt County Member Handbook.

BARN DANCE

with live music by Hunter Hathcoat

8:30pm-midnight (Midway)

Sponsor: Peabody Energy Twentymile Mine

Superintendent: Jill Delay

Peabody Energy presents the HUNTER HATHCOAT BAND at the Routt County Fair Barn Dance! Fun, FREE, family event! Hunter Hathcoat is a singer/songwriter from Ellington, Missouri with a passion for songwriting and country music. Hunter credits his red dirt roots to acts like William Clark Green, Randy Rogers, and Stoney LaRue. Along with entertaining audiences around the Midwest with his exciting live performances, Hunter is a two-time nominee for Male Vocalist of the Year in the KTTS Springfield, MO Country Music Awards.

Most recently, Hunter has released his first EP and is currently climbing in the top 40 Texas Music Scene charts. The lead single reached 60,000 Spotify streams within the first month of release and has gained radio airplay across Missouri with his lead single, "Try My Best."



“Nothing embodies the spirit of rural America like a county fair, and the Routt county Fair has been the cultural lifeblood of Routt County since 1914.”

-Tom Kourlis, Colorado Commissioner of Agriculture 1996

SUNDAY, AUGUST 18 EVENTS

105th Annual Routt County Fair 2019 • 97

**EXHIBIT HALL, VENDORS & MIDWAY OPEN,
INFLATABLE RIDES, MPB Closed**

**EXHIBIT HALL OPENS
8am (EH)**

**CHUCK FULTON MEMORIAL OPEN DRAFT
HORSE COMPETITION**

8am sign-in, 8:30am start time (OA)

**Superintendent: Mardi Anson, Bethany Aurin, Tina
Decker**

Please bring your draft horse team to show off their talents! Ten team limit, sign in starts at 8am. Teams will compete in three events:

Obstacle Course

Feed Team Race

Log Skid

Wagons will be provided, so all you need to bring are your horses and harnesses. Prizes for all competitors will be given!

PRETTY BABY CONTEST

10am (EH)

Sponsor: Mountain Valley Bank

Superintendent: Tena Frentress

This wonderful event is for the little ones. Ages 0-3 can participate with many categories to choose from. Babies can enter more than one category.

Categories (subject to change depending on entries):

Best Waddle

Chubbiest Feet

Brightest Eyes

Best Look-A-Like (mom & baby, dad & baby, grand- ma
& baby or grandpa & baby)

Nicest Hair

Cutest Dimples

Best Dressed for the Fair

F.M. LIGHT & SONS AG EXPERIENCE

10am-1pm (LB)

An interactive learning exhibit at the Routt County Fair to help promote a better understanding of the importance of agriculture and the food production system in

Routt County. Routt County 4-H clubs are putting together a hands on exhibit for this space. In addition, 4-H Jr. Leaders are hosting games twice a day, species tours for families and putting together a scavenger hunt on the fairgrounds.

HERITAGE DEMONSTRATIONS

11am-1pm (EH)

Sponsor: Community Agriculture Alliance

Watch the history of agriculture and western heritage come alive through volunteer demonstrations.

4-H/FFA BARN BREAKDOWN

11am-2pm (MPB)

YVEA's MUTTON BUSTIN'

11am (T)

Sponsor: Yampa Valley Electric Association

Superintendent: B.J. Diehl

Entry Fee: \$10. Welcome to the world of Mutton Bustin', also known as wool riding. This event is a version of Bronc Riding, transformed into a children's rodeo event when kids try to ride a sheep for up to 6 seconds. Mutton Bustin' is open to kids between the ages of 4-8 years old who are 70 pounds or less. Space is limited to the first riders that sign up and pay the \$10 entry fee. Your spot is not reserved until a parent or guardian signs the waiver and pays the entry fee. Participants must sign up in person at the Fair Office during the week of fair.

Entries close when full or Friday at noon. Participants and at least one parent must show up at the west end of the grandstands on the track no later than 10:45am on Sunday. Gear, including a protective vest and a helmet with face guard, are provided.

JACKPOT RODEO

12pm (OA)

Sponsors: Napa Steamboat/Hayden

Superintendents: Don Hayes, Tina Decker

Ranch bronc, bareback, saddle bronc, bull riding. Entry fee is \$80 per event. Registration at the fair office required no later than Saturday at noon or when full whichever comes first. Participants 18 years or younger

SUNDAY, AUGUST 18

are required to have a parent or legal guardian sign the waiver IN PERSON at the fair office. No exceptions.

HOME ARTS OPEN CLASS PAYOUT AND EXHIBIT RELEASE 2-6pm (EH)

RELEASE RULES: Unless otherwise specified under the appropriate Division throughout the Fair book, ENTRIES WILL BE RELEASED SUNDAY, AUGUST 18, FROM 2-6 PM ONLY. NO EXHIBIT MAY BE REMOVED BEFORE 2PM ON SUNDAY, and tag receipts MUST be presented during checkout time (2-6 pm ONLY). Failure to abide by the rules will disqualify an entry. Violators will be evicted. All items left after 6pm on Sunday without prior arrangements become property of the Routt County Fair and may be disposed of as the fairgrounds does not have storage space for such items.

Premiums: First-place receives a premium of \$1. Ribbons are awarded in each Division for first (blue), second (red), third place (white) and honorable mention, Champion and Reserve Champion, Grand Champion and Reserve Grand Champion. Some departments have special awards; please refer to specific departments for details. After 6pm on Sunday all premiums are forfeited.

YOUTH ADOPT-A-PIG 2pm (T)

Superintendent: Lynn Powell, Lane Iacovetto

Limited to 10 per age group 5-7yrs, 8-10yrs and 11-12 yrs, 13-17 yrs. \$30 entry fee. Pre-registration, fee and crate to transport pig required.

This is a family affair for children, filled with laughter for everyone. Little ones scramble around chasing small, quick animals. Entries open until full or noon on Saturday. Parents must sign a liability release and consent form. Please note that IF YOU CATCH A PIG YOU TAKE IT HOME so please be prepared to care for your animal properly. THERE IS NO SELLING OF PIGS! If you are not able to properly care for a young pig, you cannot enter the contest. If you sell your pig or enter the contest knowing you cannot care for one properly, you

will be banned from all future fair participation.

ADULT ADOPT-A-PIG

2:30pm or immediately following the youth adopt-a-pig (T)

Sponsor: Flat Tops Ranch Supply

Superintendent: Lynn Powell, Lane Iacovetto

Limited to 20 Adults-10 Men and 10 Women. \$30 entry fee. Pre-registration, fee and crate to transport pig required.

This is a family affair for adults, filled with laughter for everyone. Adults scramble around chasing half grown, quick animals. Entries open until full or noon on Saturday. Adults must sign a liability release and consent form. Please note that IF YOU CATCH A PIG YOU TAKE IT HOME so please be prepared to care for your animal properly. THERE IS NO SELLING OF PIGS! If you are not able to properly care for a young pig, you cannot enter the contest. If you sell your pig or enter the contest knowing you cannot care for one properly, you will be banned from all future fair participation.



ED AND BONNIE CALHOUN
Thank you for buying my 2018 market pig.



JD Case

XCEL ENERGY
Thank you for buying my 2018 junior livestock
sale steer.



Kollen Decker

BOOCO'S CONTRACT SERVICES
Thank you for buying my 2018 Reserve
Champion Market Goat.



Tessa Booco

YAMPA VALLEY DESIGN
Thank you for supporting 4-H and purchasing my
2018 private



Josee Smith
Good Times 4-H

LUCKY 8 RANCH
Thank you so much for buying my 2018 Market
Steer. Your support is greatly appreciated.



Makinly Long

COLBY AND MICHELLE WITH ELK
RIVER PET AND RANCH



Thank You for adding money onto the sale of our
2018 market swine. Thank you for giving so
much to 4-H over the years.

Cash and
Kyle Meyring

ERIC PINGLY WITH MASTER
PETROLEM



Thank you for buying my 2018 market swine. I
appreciate your support of our county fair!

Kyle Meyring

MURDOCH'S
Thank you for buying my 2018 4-H pig and your
continued support of 4-H.



Dalton Hockaday
Ranch House 4-H Club

BEAR CREEK ANIMAL HOSPITAL
Thank you for purchasing my 2018 Grand
Champion Market Hog at the Routt County Fair!
Your support is appreciated.



Emily Rossi

VECTRA BANK
Thank you for buying my 2017 4-H pig and your
continued support of 4-H.



Haley Hockaday
Ranch House 4-H Club

VICTORY MOTORS OF CRAIG, INC.

Thank you for purchasing my 2018 market steer at the Routt County Fair! Your support is appreciated.

Kayla Rossi



RANDY BOOCO

Thank you for your continued support of my 4-H projects. Thanks, Pops!

Tessa Booco



WILSON ROOFING

Thank you for supporting 4-H and purchasing my 2018 private treaty Market Swine.

Hailee Smith
Good Times 4-H



JACKI GRIMALDI AND
LARRY GUS

Thank you for adding money onto the sale of our 2018 market swine. You two are wonderful supporters of Routt County Youth.

Cash and Kyle Meyring



MEDORA FRALICK

Thank you for being a great mentor and friend. I don't know what I would do without you.
Your friend,

Morgan



EYECARE SPECIALTIES

Thank you for purchasing my 2018 Grand Champion Market Swine at the Routt County Fair! Your support is appreciated.

Emily Rossi



STEVE AND PAM WILLIAMS
FROM GLAS DEFFRYN RANCH

Thank you adding money onto the sale of our 2018 market swine. Thank you for supporting our 4-H sale.

Cash and Kyle Meyring



COYOTE CREEK RANCH

Thank you for buying my 2018 Market Goat and supporting Routt County 4H. Thank you to all the people and businesses who support us with Add-ons!

Eli Moon
Elk River Wranglers 4H Club



BOBBY YEAGER WITH PIONEER
MATERIALS WEST SLOPE

Thank you for purchasing my 2018 market hog and your continued support of 4-H.

Cash Meyring



YAMPA VALLEY LAND TRUST

Thank you for buying my 2018 Market Lamb! I had so much fun in my first year at fair!

Emma Crocker
Elk River Wranglers



CROMER CONTRACTING

Thank you purchasing my 2018 Market Swine
and supporting Routt County 4-H.

Hailee Smith
Good Times 4-H



CIRCLE BAR RANCH

Thank you for buying my 2018 Market Lamb! I
enjoyed meeting you!

Daniel Crocker
Elk River Wranglers



COOK CHEVROLET

Thank you for buying my 2018 Market Beef at
the Routt County Jr. Livestock Sale! Thank you
to all the people and businesses who support us
with Add-ons.

Cole Moon
Elk River Wranglers 4H Club



BUSBY QUARTER HORSES

Thank you for adding money towards the sale for
our 2018 market swine. Your support of our
county fair is awesome!

Cash and Kyle Meyring



COOK FORD, BEAR CREEK ANIMAL HOSPITAL & CRAIG POWERSPORTS

Thank you for purchasing my 2018 Grand Cham-
pion Goat. Your Support of 4H is greatly
appreciated!

Rachel Rolando



HILL PETROLEUM

Thank you For purchasing my 2018 market
swine and for your support of Routt County 4-H.

Leona Thurston
Southside 4-H Club



YAMPA VALLEY BANK

Thank you for purchasing my 2018 Market
Swine and supporting 4-H.

Josee Smith
Good Times 4-H



GATES CATTLE COMPANY AND RON AND CHERRI DAVENPORT

Thank you for purchasing my 2018 market hog.
Your continued support of Routt County 4-H
and Soroco FFA is appreciated!

Grace Olinger



JERRY BIGELOW

Thank you for purchasing my 2018 market hog.
Your ongoing support of Routt County 4-H and
Soroco FFA is appreciated!

Kate Olinger



COLORADO GROUP REALTY

Thank you for adding money towards the sale of
our 2018 market swine. We appreciate your
support!

Cash and Kyle Meyring



YAMPA VALLEY ELECTRIC
ASSOCIATION

Thank you for buying my 2018 market swine and
for your generous support of Routt County 4-H.

Greta Thurston
Southside 4-H Club



MCRBERTS FARMS AND
SIDNEY PEAK RANCH

Thanks for buying my 2018 market steer!

Braden Jenrich
Ranch House 4-H Club



YAMPA VALLEY ELECTRIC
ASSOCIATION

Thanks for buying my 2018 market steer!

Peyton Baker
Ranch House 4-H Club



YAMPA VALLEY ELECTRIC
ASSOCIATION

Thank you for buying my 2018 market steer.
Thanks for making me feel so special!

Olivia Rossi
Flat Top 4H Club



LUCKY 8 RANCH

Thank you for purchasing my 2018 Market
Swine and supporting 4-H.

Jace Smith
Good Times 4-H



NANCY WHITE/BUCK MOUNTAIN
LLAMA RANCH

Thank you for purchasing my 2018 Market
Swine and all you do in support of 4-H.

Jace Smith
Good Times 4-H



CENTRAL PARK MANAGEMENT

Thank you, Curt & Mary for supporting my 4-H
project and buying my 2018 swine, Football.

Amelia Emanuel
Elk River Wranglers



NATIVE EXCAVATING

Thank You Rick and Tommy Mewborn for pur-
chasing my 2018 market steer.

Jace Logan



BARA

Thank you for purchasing my 2018 market
steer.

Kody Logan



CASEY'S POND

Thank you for purchasing my 2018 market
steer and your continued support of 4-H & FFA.

Dorian Hotchkiss
Ranch House 4-H Club



ALLEN SERVICES UNLIMITED

Thank you for your add on to my 2018 Grand Champion BBQ Special Turkeys. Your love and support is greatly appreciated.



Alyvia Cox
Handy Lads and Lassies

NED & LIZA WEIHMAN

Thank you for buying my 2018 Grand Champion BBQ Special Turkeys. I appreciate all of your support.



Alyvia Cox
Handy Lads and Lassies

YVEA

Thank you for buying my 2018 market lamb. I appreciate your support.



Sophie Diehl

STEAMBOAT POWERSPORTS

Thank you for buying my 2018 BBQ Special.



Tallak Myhre
Elk River Wranglers

ASHLEIGH MUHME

Thank you for your add on to my 2018 Grand Champion BBQ Special Turkeys. I appreciate your support.



Alyvia Cox
Handy Lads and Lassies

**MASTER PETROLEUM AND
SCHRADER PROPANE**

Thank you for buying my 2018 market lamb.



Jess Diehl

SPIKE & LIBBY MEYRING

Thank you so much for everything you have done for me inside & outside of 4-H.



Jess Diehl

BUSBY QUARTER HORSES

Thank you for the continued support of our family.



Jess & Sophie Diehl

ELK HEAD RANCH

Your support towards our family is greatly appreciated.



Jess & Sophie Diehl

GLAS DEFFRYN RANCH

Thank you so much for adding onto our projects.



Jess & Sophie Diehl

BRIAN RIPLEY

Thank you for buying my 2018 market goat.



Alex Colby

JIM AND JUDY KENDALL

Thank you for housing my goats and helping.



Alex Colby

JACOBS ZZ

Thank you for buying my 2018 market lamb!



Caroline McLaughlin
High Point 4-H Club

Thank you to all of our wonderful and generous supporters who are there for us throughout the year. We appreciate you!



Elk River Wranglers 4-H Club

CRAIG TOWNSEND AND
CHERYL FOOTE

Thank you for buying my 2018 market swine.



Lucas Morter

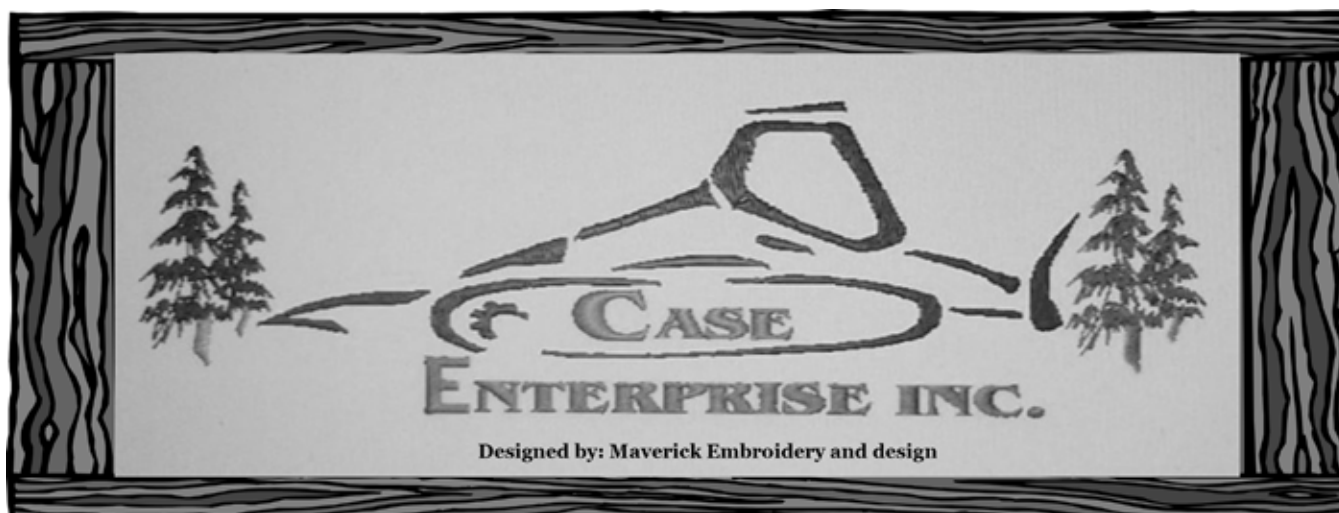
STEVE HITCHCOCK AND GERALD
BRENNER

Thank you for buying my 2018 market lamb!



Cosette McLaughlin
High Point 4-H Club





FLOWER AND GARDEN CENTER

821 INDUSTRIAL AVE.

HAYDEN, COLORADO
UP THE HILL FROM THE HAYDEN
POLICE STATION

Flowers

&

Planter design

Open Early spring-mid July

Let us help you create your special place

970-734-5221

Monica

With any questions

Mobile Mechanic Services

Snow Cats

Large Equipment

Some Vehicle

Snow mobiles

ATV's

Dirt bikes

Just Call and Ask

970-734-5222

Frank Case



COMMEMORATIVE BRICK CAMPAIGN

100% of the funds raised through the brick campaign go directly to improvements of the Routt County Fairgrounds Exhibition Hall. The bricks are placed inside the hall above the newly installed wainscoting around the perimeter building walls.

Bricks are 8" X 8" and engraved as you direct below.

PRICING: PLEASE CHECK ONE OPTION

- ☐ \$100 for one 8"X8" brick with alphabetical engraving only
(one stock symbol included if chosen: 4-H Clover, etc.)
- ☐ \$150 for one 8"X8" brick with custom logo or brand
(custom logo or brand MUST be in .jpeg or .pdf file)

Yes, I would like to reserve a commemorative brick. Please engrave my brick as follows:

All caps are used. Any symbol is considered one space (period, comma, dash)

All text is centered unless otherwise noted.

8"x8" Brick

EXAMPLE

S	M	I	T	H		F	A	M	I	L	Y								
L	I	V	E	S	T	O	C	K											
J	O	H	N	,		L	I	S	A		&		J	I	M	M	Y		



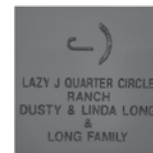
Please return this form with cash or check payable to:

Routt County Fair Brick Campaign

c/o Routt County Fairgrounds

PO Box 1000

Hayden, CO 81639



NAME: _____ PHONE: _____

ADDRESS: _____

CITY: _____ STATE: _____ ZIP: _____

EMAIL: _____ AMOUNT PAID: \$ _____

Questions? Need help? Call 970-276-3068 or email jdelay@co.routt.co.us