

LIVESTOCK DEPARTMENT

RABBITS

ALL LIVESTOCK ENTRIES TO BE DONE ONLINE BY 11:59 PM APRIL 23, 2020

OPEN RABBIT DEPARTMENT

This is an official American Rabbit Breeders Association sanctioned YOUTH show.

A.R.B.A. National Convention

PO Box 5667

Bloomington, IL 61702

Open to all youth, ages 5 through 18

THIS IS A ONE DAY CARRY IN SHOW

SHOW RULES, DEFINITIONS AND JUDGING PROCEDURES AS PRESCRIBED IN THE LATEST EDITION OF THE STANDARD OF PERFECTION OF THE AMERICAN RABBIT BREEDERS ASSOCIATION, INC., SHALL APPLY TO SAN BERNARDINO COUNTY FAIR, PROVIDED THEY DO NOT CONFLICT WITH ANY RULES AND REGULATIONS PRESCRIBED BY THE DEPARTMENT OF FOOD AND AGRICULTURE. PLEASE READ ALL RULES CAREFULLY. FAILURE TO RECOGNIZE ANY OR ALL RULES WILL EXCLUDE ENTRY.

LOCAL RULES

1. ALL RABBITS MUST BE IDENTIFIED BY PERMANENT EAR MARKINGS IN LEFT EAR AT TIME OF ENTRY ON ENTRY FORM. NO EXCEPTIONS. ANY DUPLICATION OF EAR MARKINGS BY ONE EXHIBITOR IN THE SAME CLASS OR ILLEGIBLE EAR MARKINGS WILL ELIMINATE/CAUSE ENTRIES TO BE DISQUALIFIED.
2. UNHEALTHY ANIMALS WILL NOT BE ACCEPTED AND IF ANY ANIMAL SHOULD BECOME SICK WHILE IN THE SHOW, THEY MUST BE REMOVED BY EXHIBITOR AT EARLIEST CONVENIENCE.
3. ANIMALS WILL BE SHOWN AND JUDGED IN THE PROPER DIVISION AND CLASS FOR BREED VARIETY, AGE AND SEX ONLY. IF NO CLASS IS OFFERED NO AWARDS MAY BE MADE. RABBITS & CAVIES THAT ARE DISQUALIFIED FOR BEING ENTERED IN THE WRONG CLASS AND THOSE ABSENT AT THE TIME OF JUDGING DO NOT COUNT WHEN COMPUTING THE NUMBER OF EXHIBITS IN THE CLASS.
4. ALL EXHIBITS ARE ENTERED AND SHOWN AT OWNER'S RISK.
5. PRECAUTIONS WILL BE TAKEN TO ELIMINATE DANGER AND MISTAKES IN HANDLING AND RETURN OF STOCK. THE SAN BERNARDINO COUNTY FAIR MANAGEMENT OR ITS REPRESENTATIVES WILL NOT BE RESPONSIBLE FOR ANY LOSS, DAMAGE, ACCIDENT OR DEATH OF ANY EXHIBIT DURING THE SHOW OR IN TRANSIT.
6. A JUDGE MAY ELIMINATE (EXCUSE) A RABBIT FROM COMPETITION BECAUSE OF TEMPORARY OR CURABLE DEFECTS BUT THE RABBIT & CAVY SHOULD BE COUNTED AS AN ENTRY.
7. RABBITS ARE ENTERED BY AGE AND BY WEIGHT - PLEASE WEIGH YOUR RABBITS PRIOR TO ENTRY! OVERWEIGHT JUNIORS AND INTERMEDIATES MAY BE ENTERED IN THE SENIOR CLASS. UNDERWEIGHT SENIORS MAY NOT BE ENTERED IN THE JUNIOR OR INTERMEDIATE CLASSES. NO RABBIT MAY BE ENTERED IN A CLASS LOWER THAN ITS TRUE AGE. CONSULT THE ARBA STANDARD OF PERFECTION IF YOU HAVE ANY QUESTIONS.
8. ALL EXHIBITS MUST BE THE BONA FIDE PROPERTY OF THE EXHIBITOR.

SPECIAL RULES

1. ENTRY LIMIT: THERE IS NO LIMIT OF ENTRIES; HOWEVER, NO EXHIBITOR SHALL RECEIVE MORE THAN TWO CASH AWARDS IN ANY ONE CLASS. STATE RULE IV-6.
2. ENTRY: ENTRIES MUST BE MADE ON ON-LINE. PLEASE LIST BREED, SHOW COLOR VARIETY, AND EAR NUMBERS.
3. SUBSTITUTIONS: SUBSTITUTIONS MAY BE MADE ONLY IN THE SAME DIVISION OF THE ORIGINAL ENTRY DUE. SEE STATE RULE II-5. A PENALTY OF \$5.00 MUST BE PAID PRIOR TO JUDGING FOR EACH SUBSTITUTION MADE BY THE EXHIBITOR MORE THAN TWO.
4. NO PROVISIONS WILL BE MADE FOR THE CARE OF ANIMALS AFTER TIME FOR REMOVAL HAS ENDED. PLEASE GET RELEASE FORMS FOR YOUR ANIMALS, AND ATTENDANT WILL CHECK YOUR ANIMALS AND RELEASE FORM BEFORE YOU MAY EXIT.
5. PLEASE LISTEN CAREFULLY FOR YOUR CLASS TO BE CALLED. NO CLASSES WILL BE REJUDGED FOR MISSING ANIMALS! ONLY ANIMALS PROPERLY ENTERED WILL BE PERMITTED IN THE SHOW.
6. NO SALE OF RABBITS WILL BE ALLOWED ON FAIRGROUNDS. NO EXCEPTIONS!
7. ALL AWARDS WILL BE PASSED OUT AT THE TIME THE EXHIBITS ARE RELEASED. NO EXCEPTIONS!
8. **NEW FOR 2020:**
ONLY EXHIBITORS WILL BE PERMITTED IN THE JUDGING AREA

OPEN RABBITS

LIVESTOCK DEPARTMENT

RABBITS

ALL LIVESTOCK ENTRIES TO BE DONE ONLINE BY 11:59 PM APRIL 23, 2020

THIS IS A ONE DAY CARRY IN SHOW

ENTRY FEE: \$3.00

AWARDS OFFERED PER CLASS

1 ST	2 ND	3 RD
\$3	\$2	\$1

BEST IN SHOW

RESERVE IN SHOW

ALL BEST OF BREED & BEST OPPOSITE-RIBBON

AMERICAN SYSTEM OF JUDGING

SENIOR BUCK & SENIOR DOE: 8 MONTHS OF AGE AND OVER

HEAVEY WIEGHT CLASSES

INTERMEDIATE BUCK & INTERMEDIATE DOE: 6 MONTHS TO 8 MONTHS

1. SENIOR BUCK

4. SENIOR DOE

JUNIOR BUCK & JUNIOR DOE: UNDER 6 MONTHS OF AGE

2. INTERMEDIATE BUCK

5. INTERMEDIATE DOE

**INDICATES HEAVY WEIGHT BREEDS

3. JUNIOR BUCK

6. JUNIOR DOE

SENIOR BUCK & SENIOR DOE: 6 MONTHS OF AGE AND OVER

LIGHT WEIGHT BREEDS

JUNIOR BUCK & JUNIOR DOE: UNDER 6 MONTHS OF AGE

1. SENIOR BUCK

3. SENIOR DOE

2. JUNIOR BUCK

4. JUNIOR DOE

DIVISION #	BREED	VARIETY	DIVISION #	BREED	VARIETY
1300	AMERICAN**	BLUE	1321	CALIFORNIAN**	STANDARD
1301	AMERICAN**	WHITE	1322	CHAMPAGNE D'ARGENT**	STANDARD
1302	AMERICAN CHINCHILLA**	STANDARD	1323	CHECKERED GIANT**	BLACK
1303	AMERICAN FUZZY LOP	BROKEN	1324	CHECKERED GIANT**	BLUE
1304	AMERICAN FUZZY LOP	SOLID	1325	CINNAMON**	STANDARD
1305	AMERICAN SABLE	STANDARD	1326	CRÈME D'ARGENT**	STANDARD
1306	ARGENTE BRUN**	STANDARD	1327	DUTCH	BLACK
1307	BELGIAN HARE	TAN	1328	DUTCH	BLUE
1308	BELGIAN HARE	RUFUS	1329	DUTCH	CHINCHILLA
1309	BEVEREN**	BLACK	1330	DUTCH	CHOCOLATE
1310	BEVEREN**	BLUE	1331	DUTCH	GRAY
1311	BEVEREN**	WHITE	1332	DUTCH	STEEL
1312	BLANC D'HOTOT**	STANDARD	1333	DUTCH	TORTOISE
1313	BRITANNIA PETITE	BLACK	1334	DWARF HOTOT	BLACK/CHOCOLATE
1314	BRITANNIA PETITE	BLACK OTTER	1335	ENGLISH ANGORA	COLORED
1315	BRITANNIA PETITE	BLUE EYED WHITE	1336	ENGLISH ANGORA	WHITE
1316	BRITANNIA PETITE	BROKEN	1337	ENGLISH LOP**	BROKEN
1317	BRITANNIA PETITE	CHESTNUT AGOUTI	1338	ENGLISH LOP**	SOLID
1318	BRITANNIA PETITE	RUBY EYED WHITE	1339	ENGLISH SPOT	BLACK
1319	BRITANNIA PETITE	SABLE MARTEN	1340	ENGLISH SPOT	BLUE
1320	BRITANNIA PETITE	SIAMESE SABLE	1341	ENGLISH SPOT	CHOCOLATE

DIVISION #	BREED	VARIETY	DIVISION #	BREED	VARIETY
1342	ENGLISH SPOT	GOLD	1392	MINI REX	CASTOR
1343	ENGLISH SPOT	GRAY	1393	MINI REX	CHINCHILLA
1344	ENGLISH SPOT	LILAC	1394	MINI REX	CHOCOLATE
1345	ENGLISH SPOT	TORTOISE	1395	MINI REX	HIMALAYAN
1346	FLEMISH GIANT**	BLACK	1396	MINI REX	LILAC
1347	FLEMISH GIANT**	BLUE	1397	MINI REX	LYNX

LIVESTOCK DEPARTMENT

RABBITS

ALL LIVESTOCK ENTRIES TO BE DONE ONLINE BY 11:59 PM APRIL 23, 2020

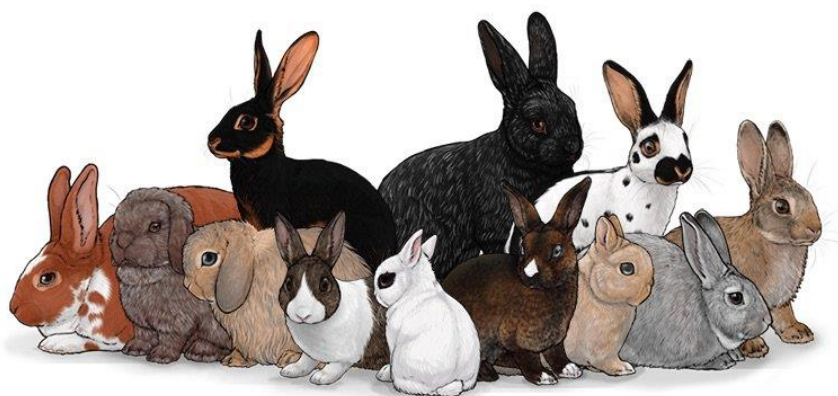
1348	FLEMISH GIANT**	FAWN	1398	MINI REX	OPAL
1349	FLEMISH GIANT**	LIGHT GRAY	1399	MINI REX	OTTER
1350	FLEMISH GIANT**	SANDY	1400	MINI REX	RED
1351	FLEMISH GIANT**	STEEL GRAY	1401	MINI REX	SABLE
1352	FLEMISH GIANT**	WHITE	1402	MINI REX	SABLE POINT
1353	FLORIDA WHITE	STANDARD	1403	MINI REX	SEAL
1354	FRENCH ANGORA	COLORED	1404	MINI REX	SILVER MARTEN
1355	FRENCH ANGORA	WHITE	1405	MINI REX	SMOKE PEARL
1356	FRENCH LOP**	BROKEN	1406	MINI REX	TORTOISE
1357	FRENCH LOP**	SOLID	1407	MINI SATIN	BLACK
1358	GIANT ANGORA**	STANDARD	1408	MINI SATIN	BLUE
1359	GIANT CHINCHILLA**	STANDARD	1409	MINI SATIN	BROKEN
1360	HARLEQUIN	JAPANESE	1410	MINI SATIN	CHINCHILLA
1361	HARLEQUIN	MAGPIE	1411	MINI SATIN	CHOCOLATE
1362	HAVANA	BLACK	1412	MINI SATIN	CHOCOLATE AGOUTI
1363	HAVANA	BLUE	1413	MINI SATIN	COPPER
1364	HAVANA	BROKEN	1414	MINI SATIN	HIMALAYAN
1365	HAVANA	CHOCOLATE	1415	MINI SATIN	OPAL
1366	HAVANA	LILAC	1416	MINI SATIN	OTTER
1367	HIMALAYAN	BLACK	1417	MINI SATIN	RED
1368	HIMALAYAN	BLUE	1418	MINI SATIN	SIAMESE
1369	HIMALAYAN	CHOCOLATE	1419	MINI SATIN	SILVER MARTEN
1370	HIMALAYAN	LILAC	1420	MINI SATIN	SQUIRREL
1371	HOLLAND LOP	BROKEN	1421	MINI SATIN	TORTOISE
1372	HOLLAND LOP	SOLID	1422	MINI SATIN	WHITE
1373	JERSEY WOOLY	AGOUTI	1423	NETHERLAND DWARF	GR.1-BLACK
1374	JERSEY WOOLY	AOV	1424	NETHERLAND DWARF	GR.1-BLUE
1375	JERSEY WOOLY	BROKEN	1425	NETHERLAND DWARF	GR.1-CHOCOLATE
1376	JERSEY WOOLY	SELF	1426	NETHERLAND DWARF	GR.1-LILAC
1377	JERSEY WOOLY	SHADED	1427	NETHERLAND DWARF	GR.1-BLUE EYED WHITE
1378	JERSEY WOOLY	TAN PATTERN	1428	NETHERLAND DWARF	GR.1-RUBY EYED WHITE
1379	LILAC	STANDARD	1429	NETHERLAND DWARF	GR.2-SABLE POINT
1380	LIONHEAD	BLACK	1430	NETHERLAND DWARF	GR.2-SIAMESE SABLE
1380.5	LIONHEAD	CHOCOLATE	1431	NETHERLAND DWARF	GR.2-SIAMESE SMOKE PEARL
1381	LIONHEAD	RUBY EYED WHITE	1432	NETHERLAND DWARF	GR.2-TORTOISE SHELL
1382	LIONHEAD	SIAMESE SABLE	1433	NETHERLAND DWARF	GR.2-BLUE TORTOISE SHELL
1383	LIONHEAD	SEAL	1434	NETHERLAND DWARF	GR.3-CHESTNUT
1384	LIONHEAD	TORTOISE	1435	NETHERLAND DWARF	GR.3-CHINCHILLA
1385	MINI LOP	BROKEN	1436	NETHERLAND DWARF	GR.3-LYNX
1386	MINI LOP	SOLID	1437	NETHERLAND DWARF	GR.3-OPAL
1387	MINI REX	WHITE	1438	NETHERLAND DWARF	GR.3-SQUIRREL
1388	MINI REX	BLACK	1439	NETHERLAND DWARF	GR.4-OTTER
1389	MINI REX	BLUE	1440	NETHERLAND DWARF	GR.4-SABLE MARTEN
1390	MINI REX	BLUE EYED WHITE	1441	NETHERLAND DWARF	GR.4-SILVER MARTEN
1391	MINI REX	BROKEN			
DIVISION #	BREED	VARIETY	DIVISION #	BREED	VARIETY
1442	NETHERLAND DWARF	GR.4-SMOKE PEARL MARTEN	1475	REX	SABLE
1443	NETHERLAND DWARF	GR.4-TAN	1476	REX	SEAL
1444	NETHERLAND DWARF	GR.5-BROKEN	1477	REX	WHITE
1445	NETHERLAND DWARF	GR.5-FAWN	1478	RHINELANDER	BLACK
1446	NETHERLAND DWARF	GR.5-HIMALAYAN	1479	RHINELANDER	BLUE
1447	NETHERLAND DWARF	GR.5-ORANGE	1480	SATIN**	BLACK

LIVESTOCK DEPARTMENT

RABBITS

ALL LIVESTOCK ENTRIES TO BE DONE ONLINE BY 11:59 PM APRIL 23, 2020

1448	NETHERLAND DWARF	GR.5-STEEL	1481	SATIN**	BLUE
1449	NEW ZEALAND**	BLACK	1482	SATIN**	BROKEN
1450	NEW ZEALAND**	BLUE	1483	SATIN**	CALIFORNIAN
1451	NEW ZEALAND**	BROKEN	1484	SATIN**	CHINCHILLA
1452	NEW ZEALAND**	RED	1485	SATIN**	CHOCOLATE
1453	NEW ZEALAND**	WHITE	1486	SATIN**	COPPER
1454	PALOMINO**	GOLDEN	1487	SATIN**	OTTER
1455	PALOMINO**	LYNX	1488	SATIN**	RED
1456	POLISH	BLACK	1489	SATIN**	SIAMESE
1457	POLISH	BLUE	1490	SATIN**	WHITE
1458	POLISH	BROKEN	1491	SATIN ANGORA	COLORS
1459	POLISH	CHOCOLATE	1492	SATIN ANGORA	WHITE
1460	POLISH	BLUE EYED WHITE	1493	SILVER	BLACK
1461	POLISH	RUBY EYED WHITE	1494	SILVER	BROWN
1462	REX	AMBER	1495	SILVER	FAWN
1463	REX	BLACK	1496	SILVER FOX**	BLACK
1464	REX	BLUE	1497	SILVER MARTEN	BLACK
1465	REX	BROKEN	1498	SILVER MARTEN	BLUE
1466	REX	CALIFORNIAN	1499	SILVER MARTEN	CHOCOLATE
1467	REX	CASTOR	1500	SILVER MARTEN	SABLE
1468	REX	CHINCHILLA	1501	STANDARD CHINCHILLA	STANDARD
1469	REX	CHOCOLATE	1502	TAN	BLACK
1470	REX	LILAC	1503	TAN	BLUE
1471	REX	LYNX	1504	TAN	CHOCOLATE
1472	REX	OPAL	1505	TAN	LILAC
1473	REX	OTTER	1506	THRIANTA	STANDARD
1474	REX	RED			



LIVESTOCK DEPARTMENT

RABBITS

ALL LIVESTOCK ENTRIES TO BE DONE ONLINE BY 11:59 PM APRIL 23, 2020

OPEN FUR DIVISION

ENTRY FEE: \$1.00

AWARDS OFFERED PER CLASS

1 ST	2 ND	3 RD
\$3	\$2	\$1

RULES

1. RABBITS MUST HAVE BEEN SHOWN IN BREED CLASS.
2. DISQUALIFIED OR ELIMINATED ANIMALS CANNOT COMPETE IN FUR AND WOOL.
3. DUPLICATION OF EAR MARKINGS ARE ACCEPTED ON ANIMALS OF DIFFERENT BREEDS IN FUR AND WOOL.
4. NO SUBSTITUTION MAY BE MADE IN FUR OR WOOL UNLESS SUBSTITUTION IS MADE IN BREED CLASS. FUR ENTRIES MUST BE ENTERED ON-LINE AS A SEPARATE ENTRY. USE SEPARATE LINE FOR EACH ENTRY. ABSENCE OF EAR MARKING ON ENTRY WILL DISQUALIFY RABBIT FROM COMPETITION.

DIVISION 1507 – FUR

CLASS: (BREED & VARIETY)

- 1 BREED FUR-COLORED
- 2 BREED FUR-WHITE
- 3 COMMERCIAL NORMAL FUR-COLORED
- 4 COMMERCIAL NORMAL FUR-WHITE

****Exhibitor must name Breed and Variety on the entry when making an entry in division.

LIVESTOCK DEPARTMENT

RABBITS

ALL LIVESTOCK ENTRIES TO BE DONE ONLINE BY 11:59 PM APRIL 23, 2020

YOUTH RABBIT DEPARTMENT

This is an official American Rabbit Breeders Association sanctioned YOUTH show.

A.R.B.A. National Convention

PO Box 5667

Bloomington, IL 61702

Open to all youth, ages 5 through 18

THIS IS A ONE DAY CARRY IN SHOW

SHOW RULES, DEFINITIONS AND JUDGING PROCEDURES AS PRESCRIBED IN THE LATEST EDITION OF THE STANDARD OF PERFECTION OF THE AMERICAN RABBIT BREEDERS ASSOCIATION, INC., SHALL APPLY TO SAN BERNARDINO COUNTY FAIR, PROVIDED THEY DO NOT CONFLICT WITH ANY RULES AND REGULATIONS PRESCRIBED BY THE DEPARTMENT OF FOOD AND AGRICULTURE. PLEASE READ ALL RULES CAREFULLY. FAILURE TO RECOGNIZE ANY OR ALL RULES WILL EXCLUDE ENTRY.

LOCAL RULES

1. ALL RABBITS MUST BE IDENTIFIED BY PERMANENT EAR MARKINGS IN LEFT EAR AT TIME OF ENTRY ON ENTRY FORM. NO EXCEPTIONS. ANY DUPLICATION OF EAR MARKINGS BY ONE EXHIBITOR IN THE SAME CLASS OR ILLEGIBLE EAR MARKINGS WILL ELIMINATE/CAUSE ENTRIES TO BE DISQUALIFIED.
2. UNHEALTHY ANIMALS WILL NOT BE ACCEPTED AND IF ANY ANIMAL SHOULD BECOME SICK WHILE IN THE SHOW, THEY MUST BE REMOVED BY EXHIBITOR AT EARLIEST CONVENIENCE.
3. ANIMALS WILL BE SHOWN AND JUDGED IN THE PROPER DIVISION AND CLASS FOR BREED VARIETY, AGE AND SEX ONLY. IF NO CLASS IS OFFERED NO AWARDS MAY BE MADE. RABBITS & CAVIES THAT ARE DISQUALIFIED FOR BEING ENTERED IN THE WRONG CLASS AND THOSE ABSENT AT THE TIME OF JUDGING DO NOT COUNT WHEN COMPUTING THE NUMBER OF EXHIBITS IN THE CLASS.
4. ALL EXHIBITS ARE ENTERED AND SHOWN AT OWNER'S RISK.
5. PRECAUTIONS WILL BE TAKEN TO ELIMINATE DANGER AND MISTAKES IN HANDLING AND RETURN OF STOCK. THE SAN BERNARDINO COUNTY FAIR MANAGEMENT OR ITS REPRESENTATIVES WILL NOT BE RESPONSIBLE FOR ANY LOSS, DAMAGE, ACCIDENT OR DEATH OF ANY EXHIBIT DURING THE SHOW OR IN TRANSIT.
6. A JUDGE MAY ELIMINATE (EXCUSE) A RABBIT FROM COMPETITION BECAUSE OF TEMPORARY OR CURABLE DEFECTS BUT THE RABBIT & CAVY SHOULD BE COUNTED AS AN ENTRY.
7. RABBITS ARE ENTERED BY AGE AND BY WEIGHT - PLEASE WEIGH YOUR RABBITS PRIOR TO ENTRY! OVERWEIGHT JUNIORS AND INTERMEDIATES MAY BE ENTERED IN THE SENIOR CLASS. UNDERWEIGHT SENIORS MAY NOT BE ENTERED IN THE JUNIOR OR INTERMEDIATE CLASSES. NO RABBIT MAY BE ENTERED IN A CLASS LOWER THAN ITS TRUE AGE. CONSULT THE ARBA STANDARD OF PERFECTION IF YOU HAVE ANY QUESTIONS.
8. ALL EXHIBITS MUST BE THE BONA FIDE PROPERTY OF THE EXHIBITOR.

SPECIAL RULES

ELIGIBILITY: JUNIOR DEPARTMENT RABBIT ENTRIES ARE OPEN TO YOUTH AGES 5 THROUGH 18.

As of 1/1/20

1. ENTRY LIMIT: THERE IS NO LIMIT OF ENTRIES; HOWEVER, NO EXHIBITOR SHALL RECEIVE MORE THAN TWO CASH AWARDS IN ANY ONE CLASS. STATE RULE IV-6.
2. ENTRY: ENTRIES MUST BE MADE ON ON-LINE. PLEASE LIST BREED, SHOW COLOR VARIETY, AND EAR NUMBERS.
3. SUBSTITUTIONS: SUBSTITUTIONS MAY BE MADE ONLY IN THE SAME DIVISION OF THE ORIGINAL ENTRY DUE.
SEE STATE RULE II-5. A PENALTY OF \$5.00 MUST BE PAID PRIOR TO JUDGING FOR EACH SUBSTITUTION MADE BY THE EXHIBITOR MORE THAN TWO.
4. NO PROVISIONS WILL BE MADE FOR THE CARE OF ANIMALS AFTER TIME FOR REMOVAL HAS ENDED. PLEASE GET RELEASE FORMS FOR YOUR ANIMALS, AND ATTENDANT WILL CHECK YOUR ANIMALS AND RELEASE FORM BEFORE YOU MAY EXIT.
5. HANDLING OF EXHIBITS: NO PERSON OTHER THAN THE OWNER WILL BE PERMITTED TO HANDLE EXHIBITS DURING JUDGING WITHOUT PERMISSION OF SHOW OFFICIALS. THIS IS A YOUTH SHOW. EXHIBITORS ARE EXPECTED TO CARRY THEIR OWN ANIMALS TO AND FROM THE JUDGING TABLE WITH MINIMAL ASSISTANCE FROM PARENTS, LEADERS AND OTHER ADULTS. PLEASE LISTEN CAREFULLY FOR YOUR CLASS TO BE CALLED. NO CLASSES WILL BE REJUDGED FOR MISSING ANIMALS! ONLY ANIMALS PROPERLY ENTERED WILL BE PERMITTED IN THE SHOW.
6. NO SALE OF RABBITS WILL BE ALLOWED ON FAIRGROUNDS. NO EXCEPTIONS!
7. ALL AWARDS WILL BE PASSED OUT AT THE TIME THE EXHIBITS ARE RELEASED. NO EXCEPTIONS!
8. **NEW FOR 2020:**
ONLY EXHIBITORS WILL BE PERMITTED IN THE JUGGING AREA

YOUTH RABBITS

LIVESTOCK DEPARTMENT

RABBITS

ALL LIVESTOCK ENTRIES TO BE DONE ONLINE BY 11:59 PM APRIL 23, 2020

THIS IS A ONE DAY CARRY IN SHOW

ENTRY FEE: \$3.00

AWARDS OFFERED PER CLASS

1 ST	2 ND	3 RD
\$3	\$2	\$1

BEST IN SHOW

RESERVE IN SHOW

ALL BEST OF BREED & BEST OPPOSITE-RIBBON

AMERICAN SYSTEM OF JUDGING

SENIOR BUCK & SENIOR DOE: 8 MONTHS OF AGE AND OVER

INTERMEDIATE BUCK & INTERMEDIATE DOE: 6 MONTHS TO 8 MONTHS

JUNIOR BUCK & JUNIOR DOE: UNDER 6 MONTHS OF AGE

**INDICATES HEAVY WEIGHT BREEDS

SENIOR BUCK & SENIOR DOE: 6 MONTHS OF AGE AND OVER

JUNIOR BUCK & JUNIOR DOE: UNDER 6 MONTHS OF AGE

HEAVEY WIEGHT CLASSES

- | | |
|----------------------|---------------------|
| 1. SENIOR BUCK | 4. SENIOR DOE |
| 2. INTERMEDIATE BUCK | 5. INTERMEDIATE DOE |
| 3. JUNIOR BUCK | 6. JUNIOR DOE |

LIGHT WEIGHT BREEDS

- | | |
|----------------|---------------|
| 1. SENIOR BUCK | 3. SENIOR DOE |
| 2. JUNIOR BUCK | 4. JUNIOR DOE |

DIVISION #	BREED	VARIETY	DIVISION #	BREED	VARIETY
900	AMERICAN**	BLUE	921	CALIFORNIAN**	STANDARD
901	AMERICAN**	WHITE	922	CHAMPAGNE D'ARGENT**	STANDARD
902	AMERICAN CHINCHILLA**	STANDARD	923	CHECKERED GIANT**	BLACK
903	AMERICAN FUZZY LOP	BROKEN	924	CHECKERED GIANT**	BLUE
904	AMERICAN FUZZY LOP	SOLID	925	CINNAMON**	STANDARD
905	AMERICAN SABLE	STANDARD	926	CRÈME D'ARGENT**	STANDARD
906	ARGENTE BRUN**	STANDARD	927	DUTCH	BLACK
907	BELGIAN HARE	TAN	928	DUTCH	BLUE
908	BELGIAN HARE	RUFUS	929	DUTCH	CHINCHILLA
909	BEVEREN**	BLACK	930	DUTCH	CHOCOLATE
910	BEVEREN**	BLUE	931	DUTCH	GRAY
911	BEVEREN**	WHITE	932	DUTCH	STEEL
912	BLANC D'HOTOT**	STANDARD	933	DUTCH	TORTOISE
913	BRITANNIA PETITE	BLACK	934	DWARF HOTOT	BLACK/CHOCOLATE
914	BRITANNIA PETITE	BLACK OTTER	935	ENGLISH ANGORA	COLORED
915	BRITANNIA PETITE	BLUE EYED WHITE	936	ENGLISH ANGORA	WHITE
916	BRITANNIA PETITE	BROKEN	937	ENGLISH LOP**	BROKEN
917	BRITANNIA PETITE	CHESTNUT AGOUTI	938	ENGLISH LOP**	SOLID
918	BRITANNIA PETITE	RUBY EYED WHITE	939	ENGLISH SPOT	BLACK
919	BRITANNIA PETITE	SABLE MARTEN	940	ENGLISH SPOT	BLUE
920	BRITANNIA PETITE	SIAMESE SABLE	941	ENGLISH SPOT	CHOCOLATE

DIVISION #	BREED	VARIETY	DIVISION #	BREED	VARIETY
------------	-------	---------	------------	-------	---------

LIVESTOCK DEPARTMENT

RABBITS

ALL LIVESTOCK ENTRIES TO BE DONE ONLINE BY 11:59 PM APRIL 23, 2020

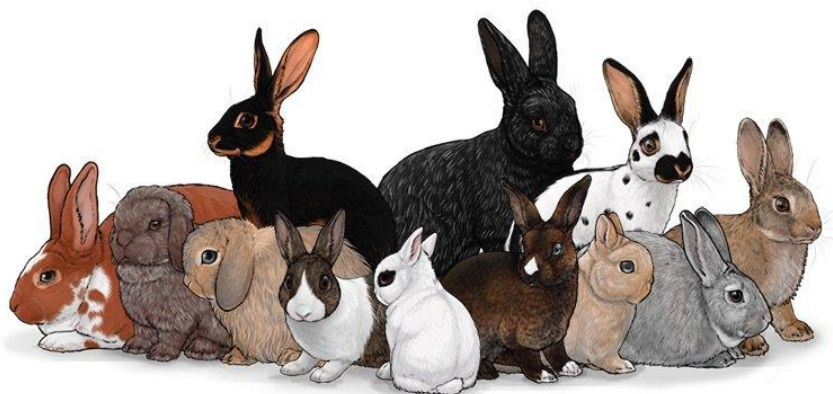
942	ENGLISH SPOT	GOLD	992	MINI REX	CHINCHILLA
943	ENGLISH SPOT	GRAY	993	MINI REX	CHOCOLATE
944	ENGLISH SPOT	LILAC	994	MINI REX	HIMALAYAN
945	ENGLISH SPOT	TORTOISE	995	MINI REX	LILAC
946	FLEMISH GIANT**	BLACK	996	MINI REX	LYNX
947	FLEMISH GIANT**	BLUE	997	MINI REX	OPAL
948	FLEMISH GIANT**	FAWN	998	MINI REX	CASTOR
949	FLEMISH GIANT**	LIGHT GRAY	999	MINI REX	OTTER
950	FLEMISH GIANT**	SANDY	1000	MINI REX	RED
951	FLEMISH GIANT**	STEEL GRAY	1001	MINI REX	SABLE
952	FLEMISH GIANT**	WHITE	1002	MINI REX	SABLE POINT
953	FLORIDA WHITE	STANDARD	1003	MINI REX	SEAL
954	FRENCH ANGORA	COLORS	1004	MINI REX	SILVER MARTEN
955	FRENCH ANGORA	WHITE	1005	MINI REX	SMOKE PEARL
956	FRENCH LOP**	BROKEN	1006	MINI REX	TORTOISE
957	FRENCH LOP**	SOLID	1007	MINI SATIN	BLACK
958	GIANT ANGORA**	STANDARD	1008	MINI SATIN	BLUE
959	GIANT CHINCHILLA**	STANDARD	1009	MINI SATIN	BROKEN
960	HARLEQUIN	JAPANESE	1010	MINI SATIN	CHINCHILLA
961	HARLEQUIN	MAGPIE	1011	MINI SATIN	CHOCOLATE
962	HAVANA	BLACK	1012	MINI SATIN	CHOCOLATE AGOUTI
963	HAVANA	BLUE	1013	MINI SATIN	COPPER
964	HAVANA	BROKEN	1014	MINI SATIN	HIMALAYAN
965	HAVANA	CHOCOLATE	1015	MINI SATIN	OPAL
966	HAVANA	LILAC	1016	MINI SATIN	OTTER
967	HIMALAYAN	BLACK	1017	MINI SATIN	RED
968	HIMALAYAN	BLUE	1018	MINI SATIN	SIAMESE
969	HIMALAYAN	CHOCOLATE	1019	MINI SATIN	SILVER MARTEN
970	HIMALAYAN	LILAC	1020	MINI SATIN	SQUIRREL
971	HOLLAND LOP	BROKEN	1021	MINI SATIN	TORTOISE
972	HOLLAND LOP	SOLID	1022	MINI SATIN	WHITE
973	JERSEY WOOLY	AGOUTI	1023	NETHERLAND DWARF	GR.1-BLACK
974	JERSEY WOOLY	AOV	1024	NETHERLAND DWARF	GR.1-BLUE
975	JERSEY WOOLY	BROKEN	1025	NETHERLAND DWARF	GR.1-CHOCOLATE
976	JERSEY WOOLY	SELF	1026	NETHERLAND DWARF	GR.1-LILAC
977	JERSEY WOOLY	SHADED	1027	NETHERLAND DWARF	GR.1-BLUE EYED WHITE
978	JERSEY WOOLY	TAN PATTERN	1028	NETHERLAND DWARF	GR.1-RUBY EYED WHITE
979	LILAC	STANDARD	1029	NETHERLAND DWARF	GR.2-SABLE POINT
980	LIONHEAD	BLACK	1030	NETHERLAND DWARF	GR.2-SIAMESE SABLE
980.5	LIONHEAD	CHOCOLATE	1031	NETHERLAND DWARF	GR.2-SIAMESE SMOKE PEARL
981	LIONHEAD	RUBY EYED WHITE	1032	NETHERLAND DWARF	GR.2-TORTOISE SHELL
982	LIONHEAD	SIAMESE SABLE	1033	NETHERLAND DWARF	GR.2-BLUE TORTOISE SHELL
983	LIONHEAD	SEAL	1034	NETHERLAND DWARF	GR.3-CHESTNUT
984	LIONHEAD	TORTOISE	1035	NETHERLAND DWARF	GR.3-CHINCHILLA
985	MINI LOP	BROKEN	1036	NETHERLAND DWARF	GR.3-LYNX
986	MINI LOP	SOLID	1037	NETHERLAND DWARF	GR.3-OPAL
987	MINI REX	WHITE	1038	NETHERLAND DWARF	GR.3-SQUIRREL
988	MINI REX	BLACK	1039	NETHERLAND DWARF	GR.4-OTTER
989	MINI REX	BLUE	1040	NETHERLAND DWARF	GR.4-SABLE MARTEN
990	MINI REX	BLUE EYED WHITE	1041	NETHERLAND DWARF	GR.4-SILVER MARTEN
991	MINI REX	BROKEN			
DIVISION #	BREED	VARIETY	DIVISION #	BREED	VARIETY
1042	NETHERLAND DWARF	GR.4-SMOKE PEARL MARTEN	1075	REX	SABLE

LIVESTOCK DEPARTMENT

RABBITS

ALL LIVESTOCK ENTRIES TO BE DONE ONLINE BY 11:59 PM APRIL 23, 2020

1043	NETHERLAND DWARF	GR.4-TAN	1076	REX	SEAL
1044	NETHERLAND DWARF	GR.5-BROKEN	1077	REX	WHITE
1045	NETHERLAND DWARF	GR.5-FAWN	1078	RHINELANDER	BLACK
1046	NETHERLAND DWARF	GR.5-HIMALAYAN	1079	RHINELANDER	BLUE
1047	NETHERLAND DWARF	GR.5-ORANGE	1080	SATIN**	BLACK
1048	NETHERLAND DWARF	GR.5-STEEL	1081	SATIN**	BLUE
1049	NEW ZEALAND**	BLACK	1082	SATIN**	BROKEN
1050	NEW ZEALAND**	BLUE	1083	SATIN**	CALIFORNIAN
1051	NEW ZEALAND**	BROKEN	1084	SATIN**	CHINCHILLA
1052	NEW ZEALAND**	RED	1085	SATIN**	CHOCOLATE
1053	NEW ZEALAND**	WHITE	1086	SATIN**	COPPER
1054	PALOMINO**	GOLDEN	1087	SATIN**	OTTER
1055	PALOMINO**	LYNX	1088	SATIN**	RED
1056	POLISH	BLACK	1089	SATIN**	SIAMESE
1057	POLISH	BLUE	1090	SATIN**	WHITE
1058	POLISH	BROKEN	1091	SATIN ANGORA	COLORS
1059	POLISH	CHOCOLATE	1092	SATIN ANGORA	WHITE
1060	POLISH	BLUE EYED WHITE	1093	SILVER	BLACK
1061	POLISH	RUBY EYED WHITE	1094	SILVER	BROWN
1062	REX	AMBER	1095	SILVER	FAWN
1063	REX	BLACK	1096	SILVER FOX**	BLACK
1064	REX	BLUE	1097	SILVER MARTEN	BLACK
1065	REX	BROKEN	1098	SILVER MARTEN	BLUE
1066	REX	CALIFORNIAN	1099	SILVER MARTEN	CHOCOLATE
1067	REX	CASTOR	1100	SILVER MARTEN	SABLE
1068	REX	CHINCHILLA	1101	STANDARD CHINCHILLA	STANDARD
1069	REX	CHOCOLATE	1102	TAN	BLACK
1070	REX	LILAC	1103	TAN	BLUE
1071	REX	LYNX	1104	TAN	CHOCOLATE
1072	REX	OPAL	1105	TAN	LILAC
1073	REX	OTTER	1106	THRIANTA	STANDARD
1074	REX	RED			



LIVESTOCK DEPARTMENT

RABBITS

ALL LIVESTOCK ENTRIES TO BE DONE ONLINE BY 11:59 PM APRIL 23, 2020

FUR DIVISION

ENTRY FEE: \$1.00

AWARDS OFFERED PER CLASS

1 ST	2 ND	3 RD
\$3	\$2	\$1

RULES

1. RABBITS MUST HAVE BEEN SHOWN IN BREED CLASS.
2. DISQUALIFIED OR ELIMINATED ANIMALS CANNOT COMPETE IN FUR AND WOOL.
3. DUPLICATION OF EAR MARKINGS ARE ACCEPTED ON ANIMALS OF DIFFERENT BREEDS IN FUR AND WOOL.
4. NO SUBSTITUTION MAY BE MADE IN FUR OR WOOL UNLESS SUBSTITUTION IS MADE IN BREED CLASS. FUR ENTRIES MUST BE ENTERED ON-LINE AS A SEPARATE ENTRY. USE SEPARATE LINE FOR EACH ENTRY. ABSENCE OF EAR MARKING ON ENTRY WILL DISQUALIFY RABBIT FROM COMPETITION.

DIVISION 1110 – FUR

CLASS: (BREED & VARIETY)

- 1 BREED FUR-COLORED
- 2 BREED FUR-WHITE
- 3 COMMERCIAL NORMAL FUR-COLORED
- 4 COMMERCIAL NORMAL FUR-WHITE

****Exhibitor must name Breed and Variety on the entry when making an entry in division.

RABBIT SHOWMANSHIP

ENTRY FEE: \$3.00

AWARDS OFFERED PER CLASS

1 ST	2 ND	3 RD	4 TH	5 TH	6h
\$8	\$7	\$6	\$5	\$4	\$3

1. SHOWMANSHIP ENTRY MUST BE PRE-ENTERED.
2. RABBIT MUST BE OWNED BY PARTICIPANT AND ENTERED AND SHOWN IN THE PROPER CLASS IN THIS SHOW.
3. SHOWMANSHIP IS OPEN TO ANY RABBIT EXHIBITOR.
4. UNIFORMS ARE REQUIRED.
5. LONG SLEEVES ARE REQUIRED.

DIVISION 1111- RABBIT SHOWMANSHIP

CLASS

- | | |
|--|----------------------------------|
| 1 SENIOR.....14 YRS. AND OLDER .. | 3. JUNIOR.....9 YRS. & 10 YRS. |
| 2 INTERMEDIATE11 YRS. TO 13 YRS. .. | 4. BEGINNER.....5 YRS. TO 8 YRS. |

**LIVESTOCK DEPARTMENT
CAVY
ALL LIVESTOCK ENTRIES TO BE DONE ONLINE BY 11:59 PM APRIL 23, 2020**

CAVY DEPARTMENT

This is an official American Rabbit Breeders Association sanctioned YOUTH show.

A.R.B.A. National Convention

PO Box 5667

Bloomington, IL 61702

Open to all youth, ages 5 through 18

THIS IS A ONE DAY CARRY IN SHOW

SHOW RULES, DEFINITIONS AND JUDGING PROCEDURES AS PRESCRIBED IN THE LATEST EDITION OF THE STANDARD OF PERFECTION OF THE AMERICAN RABBIT BREEDERS ASSOCIATION, INC., SHALL APPLY TO SAN BERNARDINO COUNTY FAIR, PROVIDED THEY DO NOT CONFLICT WITH ANY RULES AND REGULATIONS PRESCRIBED BY THE DEPARTMENT OF FOOD AND AGRICULTURE. PLEASE READ ALL RULES CAREFULLY. FAILURE TO RECOGNIZE ANY OR ALL RULES WILL EXCLUDE ENTRY.

LOCAL RULES

1. ALL CAVIES MUST BE IDENTIFIED BY PERMANENT EAR MARKINGS IN LEFT EAR AT TIME OF ENTRY. NO EXCEPTIONS. ANY DUPLICATION OF EAR MARKINGS BY ONE EXHIBITOR IN THE SAME CLASS OR ILLEGIBLE EAR MARKINGS WILL ELIMINATE/CAUSE ENTRIES TO BE DISQUALIFIED.
2. UNHEALTHY ANIMALS WILL NOT BE ACCEPTED AND IF ANY ANIMAL SHOULD BECOME SICK WHILE IN THE SHOW, THEY MUST BE REMOVED BY EXHIBITOR AT EARLIEST CONVENIENCE.
3. ANIMALS WILL BE SHOWN AND JUDGED IN THE PROPER DIVISION AND CLASS FOR BREED VARIETY, AGE AND SEX ONLY. IF NO CLASS IS OFFERED NO AWARDS MAY BE MADE. CAVIES THAT ARE DISQUALIFIED FOR BEING ENTERED IN THE WRONG CLASS AND THOSE ABSENT AT THE TIME OF JUDGING DO NOT COUNT WHEN COMPUTING THE NUMBER OF EXHIBITS IN THE CLASS.
4. ALL EXHIBITS ARE ENTERED AND SHOWN AT OWNER'S RISK.
5. PRECAUTIONS WILL BE TAKEN TO ELIMINATE DANGER AND MISTAKES IN HANDLING AND RETURN OF STOCK. THE SAN BERNARDINO COUNTY FAIR MANAGEMENT OR ITS REPRESENTATIVES WILL NOT BE RESPONSIBLE FOR ANY LOSS, DAMAGE, ACCIDENT OR DEATH OF ANY EXHIBIT DURING THE SHOW OR IN TRANSIT.
6. A JUDGE MAY ELIMINATE (EXCUSE) A CAVY FROM COMPETITION BECAUSE OF TEMPORARY OR CURABLE DEFECTS BUT THE CAVY SHOULD BE COUNTED AS AN ENTRY.
7. ALL EXHIBITS MUST BE THE BONA FIDE PROPERTY OF THE EXHIBITOR.

SPECIAL RULES

ELIGIBILITY: JUNIOR DEPARTMENT CAVY ENTRIES ARE OPEN TO YOUTH AGES 5 THROUGH 18.

As of 1/1/20

1. ENTRY LIMIT: THERE IS NO LIMIT OF ENTRIES; HOWEVER, NO EXHIBITOR SHALL RECEIVE MORE THAN TWO CASH AWARDS IN ANY ONE CLASS. STATE RULE IV-6.
2. ENTRY: ENTRIES MUST BE MADE ON ON-LINE. PLEASE LIST BREED, SHOW COLOR VARIETY, AND EAR NUMBERS.
3. SUBSTITUTIONS: SUBSTITUTIONS MAY BE MADE ONLY IN THE SAME DIVISION OF THE ORIGINAL ENTRY DUE.
SEE STATE RULE II-5. A PENALTY OF \$5.00 MUST BE PAID PRIOR TO JUDGING FOR EACH SUBSTITUTION MADE BY THE EXHIBITOR MORE THAN TWO.
4. NO PROVISIONS WILL BE MADE FOR THE CARE OF ANIMALS AFTER TIME FOR REMOVAL HAS ENDED. PLEASE GET RELEASE FORMS FOR YOUR ANIMALS, AND ATTENDANT WILL CHECK YOUR ANIMALS AND RELEASE FORM BEFORE YOU MAY EXIT.
5. HANDLING OF EXHIBITS: NO PERSON OTHER THAN THE OWNER WILL BE PERMITTED TO HANDLE EXHIBITS DURING JUDGING WITHOUT PERMISSION OF SHOW OFFICIALS. THIS IS A YOUTH SHOW. EXHIBITORS ARE EXPECTED TO CARRY THEIR OWN ANIMALS TO AND FROM THE JUDGING TABLE WITH MINIMAL ASSISTANCE FROM PARENTS, LEADERS AND OTHER ADULTS. PLEASE LISTEN CAREFULLY FOR YOUR CLASS TO BE CALLED. NO CLASSES WILL BE REJUDGED FOR MISSING ANIMALS! ONLY ANIMALS PROPERLY ENTERED WILL BE PERMITTED IN THE SHOW.
6. NO SALE OF CAVIES WILL BE ALLOWED ON FAIRGROUNDS. NO EXCEPTIONS!
7. ALL AWARDS WILL BE PASSED OUT AT THE TIME THE EXHIBITS ARE RELEASED. NO EXCEPTIONS!
8. **NEW FOR 2020:**
ONLY EXHIBITORS WILL BE PERMITTED IN THE JUDGING AREA

LIVESTOCK DEPARTMENT

CAVY

ALL LIVESTOCK ENTRIES TO BE DONE ONLINE BY 11:59 PM APRIL 23, 2020

CAVY SHOW

ENTRY FEE: \$3.00

AWARDS OFFERED PER CLASS

1 ST	2 ND	3 RD
\$3	\$2	\$1

BEST IN SHOW

RESERVE IN SHOW

DEFINITIONS

Sr. Boars & Sows	Inter. Boars & Sows	Jr. Boars & Sows
6 mos. & older Over 32 oz	4 mos. to 6 mos. 22 -32 oz	Under 4 mos. of age 12-22 oz.

CAVY CLASSES

1 SENIOR BOAR

2 SENIOR SOW

3 INTERMEDIATE BOAR

4 INTERMEDIATE SOW

5 JUNIOR BOAR

6 JUNIOR SOW

DIVISION #	BREED	VARIETY	DIVISION #	BREED	VARIETY
1200	ABYSSINIAN	SELF	1219	AMERICAN CAVY	ROAN
1201	ABYSSINIAN	AGOUTI	1220	AMERICAN CAVY	DILUTE SOLID
1202	ABYSSINIAN	BRINDLE	1221	AMERICAN CAVY	GOLDEN SOLID
1203	ABYSSINIAN	ROAN	1222	AMERICAN CAVY	SILVER SOLID
1204	ABYSSINIAN	ANY OTHER SOLID	1223	AMERICAN CAVY	DILUTE AGOUTI
1205	ABYSSINIAN	MARKED	1224	AMERICAN CAVY	GOLDEN AGOUTI
1206	ABYSSINIAN	TAN PATTERN	1225	AMERICAN CAVY	SILVER AGOUTI
1207	ABYSSINIAN SATIN	SELF	1226	AMERICAN CAVY	DALMATIAN
1208	ABYSSINIAN SATIN	AGOUTI	1227	AMERICAN CAVY	DUTCH
1209	ABYSSINIAN SATIN	BRINDLE	1228	AMERICAN CAVY	HIMALAYAN
1210	ABYSSINIAN SATIN	ROAN	1229	AMERICAN CAVY	TORTOISE SHELL & WHITE
1211	ABYSSINIAN SATIN	ANY OTHER SOLID	1230	AMERICAN CAVY	BROKEN & TORTOISE SHELL
1212	ABYSSINIAN SATIN	MARKED	1231	AMERICAN CAVY	TAN PATTERN
1213	AMERICAN CAVY	BLACK	1232	AMERICAN SATIN	CREAM
1214	AMERICAN CAVY	CREAM	1233	AMERICAN SATIN	RED
1215	AMERICAN CAVY	RED	1234	AMERICAN SATIN	WHITE
1216	AMERICAN CAVY	WHITE	1235	AMERICAN SATIN	ANY OTHER SELF
1217	AMERICAN CAVY	ANY OTHER SELF	1236	AMERICAN SATIN	AGOUTI
1218	AMERICAN CAVY	BRINDLE	1237	AMERICAN SATIN	INTERMIXED SOLIDS

DIVISION #	BREED	VARIETY	DIVISION #	BREED	VARIETY
------------	-------	---------	------------	-------	---------

LIVESTOCK DEPARTMENT CAVY

ALL LIVESTOCK ENTRIES TO BE DONE ONLINE BY 11:59 PM APRIL 23, 2020

1238	AMERICAN SATIN	TICKED SOLIDS	1265	SILKIE SATIN	ANY OTHER VARIETY
1239	AMERICAN SATIN	BROKEN & TORTOISE SHELL	1266	TEDDY	SELF
1240	AMERICAN SATIN	ANY OTHER MIXED	1267	TEDDY	AGOUTI
1241	CORONET	SELF	1268	TEDDY	INTERMIXED SOLIDS
1242	CORONET	AGOUTI	1269	TEDDY	TICKED SOLIDS
1243	CORONET	BROKEN COLOR	1270	TEDDY	BROKEN COLOR
1244	CORONET	TORTOISE SHELL & WHITE	1271	TEDDY	TORTOISE SHELL & WHITE
1245	CORONET	ANY OTHER VARIETY	1272	TEDDY	ANY OTHER MARKED
1246	PERUVIAN	SELF	1273	TEDDY	TAN PATTERN
1247	PERUVIAN	AGOUTI	1274	TEDDY SATIN	SELF
1248	PERUVIAN	BROKEN COLOR	1275	TEDDY SATIN	AGOUTI
1249	PERUVIAN	TORTOISE SHELL & WHITE	1276	TEDDY SATIN	SOLID
1250	PERUVIAN	ANY OTHER VARIETY	1277	TEDDY SATIN	BROKEN COLOR
1251	PERUVIAN SATIN	SELF	1278	TEDDY SATIN	TORTOISE SHELL & WHITE
1252	PERUVIAN SATIN	AGOUTI	1279	TEDDY SATIN	ANY OTHER MARKED
1253	PERUVIAN SATIN	BROKEN COLOR	1280	TEXEL	SELF
1254	PERUVIAN SATIN	TORTOISE SHELL & WHITE	1281	TEXEL	AGOUTI
1255	PERUVIAN SATIN	ANY OTHER VARIETY	1282	TEXEL	BROKEN COLOR
1256	SILKIE	SELF	1283	TEXEL	TORTOISE SHELL & WHITE
1257	SILKIE	AGOUTI	1284	TEXEL	ANY OTHER VARIETY
1258	SILKIE	BROKEN COLOR	1285	WHITE CRESTED	BLACK
1259	SILKIE	TORTOISE SHELL & WHITE	1286	WHITE CRESTED	RED
1260	SILKIE	ANY OTHER VARIETY	1287	WHITE CRESTED	ANY OTHER SELF
1261	SILKIE SATIN	SELF	1288	WHITE CRESTED	AGOUTI
1262	SILKIE SATIN	AGOUTI	1289	WHITE CRESTED	BRINDLE
1263	SILKIE SATIN	BROKEN COLOR	1290	WHITE CRESTED	ANY OTHER SOLID
1264	SILKIE SATIN	TORTOISE SHELL & WHITE	1291	WHITE CRESTED	MARKED



LIVESTOCK DEPARTMENT
CAVY
ALL LIVESTOCK ENTRIES TO BE DONE ONLINE BY 11:59 PM APRIL 23, 2020

CAVY SHOWMANSHIP

ENTRY FEE: \$3.00

AWARDS OFFERED PER CLASS

1 ST	2 ND	3 RD	4 TH	5 TH	6 th
\$8	\$7	\$6	\$5	\$4	\$3

1. CAVY MUST BE OWNED BY PARTICIPANT AND ENTERED AND SHOWN IN THE PROPER CLASS IN THIS SHOW.
2. SHOWMANSHIP IS OPEN TO ANY CAVY EXHIBITOR.
3. UNIFORMS ARE REQUIRED
4. LONG SLEEVES ARE REQUIRED.

DIVISION 1295- CAVY SHOWMANSHIP

CLASS

- | | |
|--|---|
| 1. <u>SENIOR.....14 YRS. AND OLDER</u> | 3. <u>JUNIOR.....9 YRS. & 10 YRS.</u> |
| 2. <u>INTERMEDIATE11 YRS. TO 13 YRS.</u> | 4. <u>BEGINNER.....5 YRS. TO 8 YRS.</u> |