

**ShoWare Center**  
POLICIES AND PROCEDURES FOR  
ACCESS TO PUBLICALLY DESIGNATED PLAZA AREAS

**I. INTRODUCTION**

The purpose of these policies and procedures is to provide reasonable access to designated plaza areas that are additionally available to the public for First Amendment purposes, in addition to the public sidewalk that parallels James Street. No leafleting, solicitation, picketing, or demonstration will be permitted on the ShoWare Center premises, except in the leased portions of the building as may be permitted by any particular tenant who has leased the ShoWare Center for an event, in whole or in part. The policies outlined below apply to all individuals and groups who seek access to the designated plaza areas, including those who wish to engage in any activity protected under the First Amendment, regardless of whether that activity is for-profit or not-for-profit. These policies will be applied neutrally without discrimination based upon either the content of any speech or expressive conduct or the identity of the individuals or groups involved.

It must be recognized that it is not possible to issue a policy covering every possible activity or responsive operations protocol. Therefore, ShoWare Center management will have to apply some discretion within the scope of the guidelines offered by these policies and procedures.

**II. DESIGNATED PLAZA AREAS**

- A. *General.* In addition to the public sidewalk that parallels the ShoWare Center on James Street, the ShoWare Center will allow activity, including First Amendment protected activity, to additionally occur within two designated triangular plaza areas that abut the public sidewalk on the eastern and western side of the facility. See the attached map (**Exhibit "A"**) for the location of these designated areas. These areas are located to best promote public safety as well as the safety of the demonstrators, and to not impede the free flow and passage of individuals to and from the ShoWare Center. Access to the public sidewalk that parallels James Street and abuts the ShoWare Center's front plaza will remain open for public use, including pedestrian travel and First Amendment purposes.

Activity that occurs within the designated plaza areas, however, may not (i) interfere with the rights of others to have easy, unimpeded ingress and egress to and from the ShoWare Center, (ii) interfere with the right of others to move freely through the entire plaza area, (iii) create a safety hazard to patrons or the general public, (iv) violate existing laws or city ordinances, or (v) substantially disrupt events being held at the ShoWare Center. ShoWare Center management will intercede where actions occurring within the designated plaza areas interfere as proscribed above.

- B. Signs. Any placards, flags, signs, or banners carried by individuals using the designated plaza areas shall be of such a size as to allow safe and unobstructed passage of pedestrian or vehicular traffic.
- C. No Fixed Location. Given the need to maintain the free flow and passage of individuals, no one shall establish a fixed location within the designated plaza areas through the placement of a table, display, or other similar device.
- D. Multiple Groups. If more than one group is engaging in an activity within the designated plaza areas and restrictions are necessary, ShoWare Center management will attempt to accomplish restrictions on a reasonable and proportionate basis.
- E. Parking Lots. ShoWare Center prohibits any leafleting, soliciting, picketing, rallying, or demonstrating in the parking lots. No one shall be permitted to remain in the parking lots for an extended period of time, and no person shall engage others within the parking lot in solicitation or protest activities.
- F. Amplification. No one shall utilize sound devices within the designated plaza areas without the express prior written approval of the ShoWare Center management. Approval will be granted, provided that the use of any permitted sound device does not create a nuisance or noise of sufficient volume to be audible to the hearing of persons more than fifty (50) feet away from the designated plaza areas, and shall not otherwise violate these policies. If ShoWare Center has an event taking place on its front plaza, amplification used within the designated plaza areas shall not create a nuisance or noise of sufficient volume that disrupts the front plaza event, and given the close proximity between the front plaza and the designated plaza areas, such disruption may occur at a distance closer than fifty (50) feet.

### **III. ON-SITE REGISTRATION**

Organizations desiring to use the designated plaza areas at the ShoWare Center are requested to register with ShoWare Center management offices. The purpose of registration is not to censor or in any way review the content of any activity, but to allocate sufficient space for all activities or access sought, to provide for proper crowd management planning, and to provide the participants with copies of the policies and procedures governing the use of the designated plaza areas.

Information requested to be provided includes:

- The time of the planned activity;
- The nature of the planned activity;
- The approximate number of persons involved in the activity;
- If materials are to be passed out, a sample of these materials is requested, but not required, to be provided to ShoWare Center; and
- If the use of an amplification device is being requested.

# **SHOWARE CENTER**

## REQUESTED REGISTRATION FOR ACTIVITY WITHIN DESIGNATED PLAZA AREAS

DATE OF EVENT: \_\_\_\_\_

EVENT: \_\_\_\_\_

ORGANIZATION OR PURPOSE: \_\_\_\_\_

ORGANIZATION ADDRESS (*optional information*): \_\_\_\_\_

NAME & PHONE NUMBER OF CONTACT PERSON (*optional information*): \_\_\_\_\_

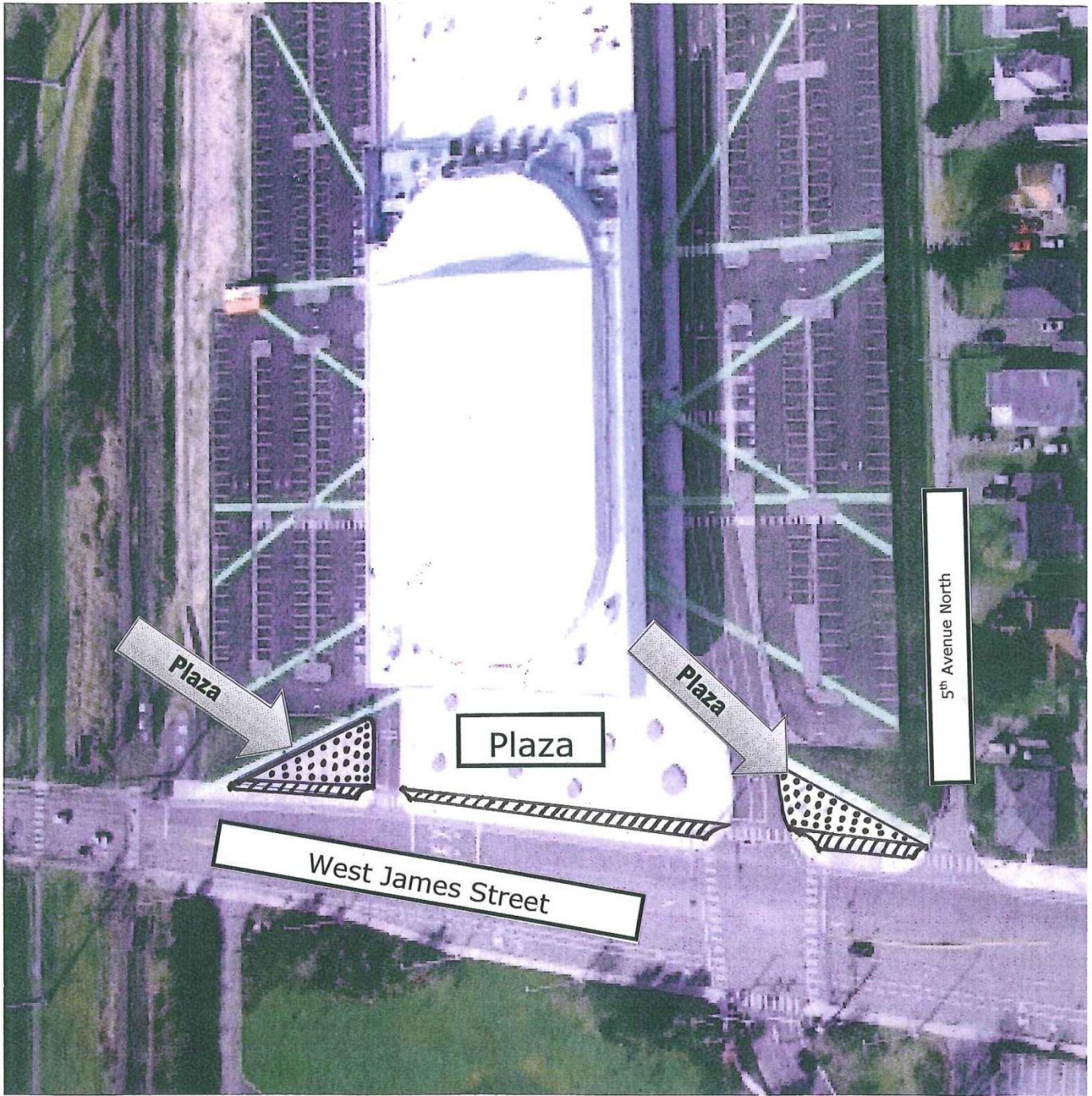
NUMBER OF INDIVIDUALS PARTICIPATING: \_\_\_\_\_

TIME OF PLANNED ACTIVITY: \_\_\_\_\_

NATURE OF PLANNED ACTIVITY: \_\_\_\_\_

AMPLIFICATION BEING REQUESTED: YES NO

PLEASE PROVIDE A COPY OF ANY HANDOUTS THAT YOU WILL BE  
DISTRIBUTING TO PASSERSBY (*optional information*).



**Free Speech Expression Zones**

 Plaza

 Sidewalk

ShoWare Center Free Speech Zones for Trial Period Beginning August, 2009