

Decorative Arts Competition Handbook

For more information, contact
Lorie Stinson, CFE
Exhibits and Special Events Manager
Phone: (561) 790-5245
Email: lorie@southfloridafair.com

IMPORTANT DATES

Online or Paper Entry Form deadline

Friday, January 1, 2021

Deliver items to Building 3 at the South Florida Fair (see Page 6)

Friday, January 8, 2021

9 a.m. – 5 p.m.

Saturday, January 9, 2021

9 a.m. – 5 p.m.

Sunday, January 10, 2021

9 a.m. – 5 p.m.

Items exhibited

January 15 - 31, 2021

Entry pick up

Monday, February 1, 2021

9 a.m. – 5 p.m.

Competition Overview

Entry Fee: FREE

How to enter online – Page 6

General Rules – Page 7

Paper entry form - Page 8

Exhibitors are encouraged to read this handbook in its entirety.

Eligibility

- The Decorative Arts Beginner Division is open to all Florida residents ages 18 and up, who have three years or less of painting experience.
- The Decorative Arts Non-Professional Division is open to all Florida residents ages 18 and up.
- The Decorative Arts Professional Division is open to all Florida residents ages 18 and up.

You must compete in the Professional Division if you:

- receive a major portion of your income from the sale of your art; OR
- publish your own designs; OR
- teach decorative art classes; OR
- have a decorative arts certification or are a certified teacher; OR
- have ever done any of the above in the past



Entry Rules

NUMBER OF ENTRIES

Due to space limitations, only six (6) items per person will be accepted for judging. All six (6) can be entered in the same class or maybe entered in different classes.

SIZE AND PREPARATION GUIDELINES

- All artwork must be labeled with the exhibitor's name on the back or bottom of the piece.
- Two-dimensional artwork cannot exceed 36 inches in any direction, including the frame.
- All two-dimensional artwork must be received installation ready. Most artwork must be framed unless painted on a gallery wrapped canvas. Artwork should be suitably wired using strong screw eyes and wire. *See "Preparing Entry for Exhibition" on Page 3.*
- Three-dimensional artwork cannot exceed 24 inches in any direction, unless approved by Exhibits and Special Events Manager.
- All three-dimensional artwork must be received installation ready. Provide a base if necessary, for structural support.
- All artwork must be dry when submitted for exhibition.

GENERAL ENTRY RULES

- A decorative artist can use a design created by another artist, however the piece must be entirely your own work.
- Entries previously exhibited in the South Florida Fair may not be submitted for competition.
- Exhibited work must be completed within the last two years.
- Entries must have been prepared/made/processed by the exhibitor in whose name they are entered.
- In keeping with the South Florida Fair's family orientation, nudes or items of an offensive, controversial, or objectionable nature or subject matter will not be accepted.

Judging and Awards

The Fair ensures the judges are knowledgeable in the division in which they are judging and will be impartial. Judges reserve the right to reassign entries to a more appropriate division or class. Judging will be done using a scorecard to assist in keeping decisions as objective as possible. *The decision of the judge(s) is final.*

If, at the judge's discretion, an entry does not merit a placing, the judge shall give no award under any circumstance. This rule applies whether there is one or more exhibits in the class.

Awards Information

Decorative Arts – Beginner Division

First Place – South Florida Fair Ribbon

Second Place – South Florida Fair Ribbon

Third Place – South Florida Fair Ribbon

Decorative Arts – Non-Professional Division

First Place – South Florida Fair Ribbon

Second Place – South Florida Fair Ribbon

Third Place – South Florida Fair Ribbon

Decorative Arts – Professional Division

First Place – South Florida Fair Ribbon

Second Place – South Florida Fair Ribbon

Third Place – South Florida Fair Ribbon

Best of Show – South Florida Fair Ribbon and Premium Payment

Best of Show Awards will be chosen from the first-place winners in each Division.

Judging Criteria

Overall Impression

Pattern Execution

Technical Skills

Presentation

Preparing Entry for Exhibition

Decorative Arts

(Items that can be hung on wall)

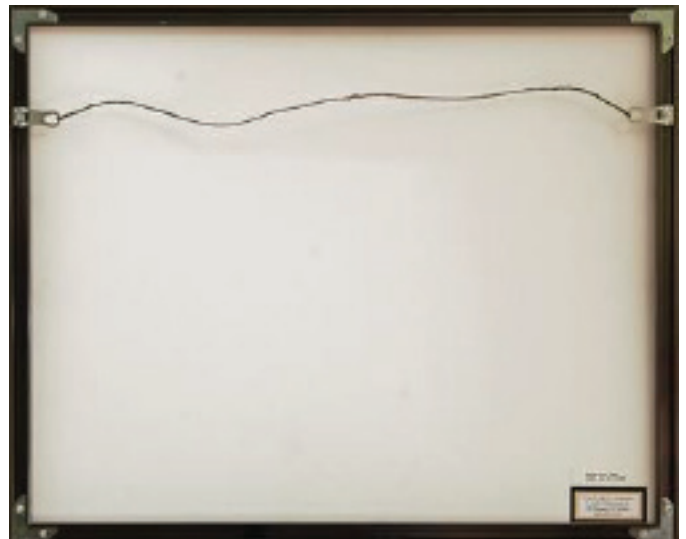
Artwork should be framed excluding gallery wrapped canvases

- Framed items must be ready to hang using secure screw eyes and wire.
- Gallery wrapped canvases should be ready to hang using secure screw eyes and wire.
Gallery wrap is a method of stretching an artist's canvas so that the canvas wraps around the sides of the stretcher bar or strainer bars and is secured to the back of the wooden frame, where the hardware (staples, tacks, etc.) is hidden.
- All artwork must be labeled with the exhibitor's name on the back of the piece.

Examples of wire hangers on gallery wrapped canvases



Examples of wire hangers on frames



Decorative Arts

(Items that sit on pedestal or shelf)

- All three-dimensional artwork must be received installation ready. Provide a base if necessary, for structural support. The Fair will provide pedestals and glass cases to protect the work.
- All artwork must be labeled with the exhibitor's name on the bottom of the piece.

Decorative Arts – Divisions and Classes

Definitions

Decorative Painting: a diverse art form using a variety of techniques and mediums to decorate functional and non-functional surfaces. The designs can be original or copied patterns painted on a variety of surfaces from paper, wood items, canvas, clay pots, furniture, boxes, and many more. Mediums are anything from oil, acrylic, watercolor, colored pencils, alcohol inks, pastels, etc.

Oil and Acrylic Media Paintings: defined as 2D paintings painted on stretched or non-stretched canvas, wood, clay board, or another hard surface.

Water Media: limited to water soluble water media (no water-soluble oil products or pastels). Paintings may be created on all surfaces specifically for water media (i.e. paper, clay board or synthetic surfaces like Yupo and Tyvek®, illustration board, paper mounted on board, or flat upstretched watercolor canvas). The paintings can be framed, matted, under glass or Plexiglas or varnished.

Acrylic pouring: can be used as a background for any of the categories but if it is only a pouring it should be entered in Fine Art Painting Class 7.

Drawing: includes colored pencil, pastel, graphite, charcoal, pen and ink, markers, etc.

Calligraphy and Zentangle: can include any media. Calligraphy and Zentangle art must be 100 percent drawn by the artist.

Small Furniture: includes chairs, trunks, side tables, stools, hassocks, etc. Pieces can be antique, vintage, or new, but must contain decorative painting, stenciling, faux finish or leafing done by the artist that is entering.

Repurposed Items: transformed or modified to use for a purpose other than its originally intended use, for example, a coffeepot made into a birdhouse. The item must show some form of decorative painting done by the artist entering. For this decorative arts competition a 3D surface is any dimensional item that is not considered small furniture or a repurposed item. *For example: platters, plates, candle sticks, trays, small boxes, etc.*

Decorative Arts – Beginner - Division 1

Class Description (any media 2D/3D surfaces)

- 1 People/Portraits (any media)
- 2 Places (any media) (scapes - land, sea, sky, and city)
- 3 Still life, florals or things (any media)
- 4 Animals (realistic) or whimsical creatures (any media)
- 5 Stroke work /folk art (any media)
- 6 Other not listed (any media)

Decorative Arts – Non-Professional - Division 2

Class Description

Acrylic and Oil Painting – 2D or 3D surfaces

- 1 Acrylic and Oil – People/Portraits
- 2 Acrylic and Oil – Places (scapes - land, sea, sky, and city)
- 3 Acrylic and Oil – Still life and things
- 4 Acrylic and Oil – Florals
- 5 Acrylic and Oil – Animals (realistic)
- 6 Acrylic and Oil – Whimsical Creatures
- 7 Acrylic and Oil – Stroke Work/Folk Art

Water Media Painting – 2D

- 8 Water Media – People/Portraits
- 9 Water Media – Places (scapes - land, sea, sky, and city)
- 10 Water Media – Still Life and things
- 11 Water Media – Florals
- 12 Water Media – Animals (realistic)
- 13 Water Media – Whimsical Creatures

Other Mediums – 2D or 3D surface

- 14 Reproduction of Old Masters (any media)
- 15 Drawing – People/Portraits
- 16 Drawing – Places (scapes - land, sea, sky, and city)
- 17 Drawing – Still Life, Florals or Things
- 18 Drawing – Animals (realistic)
- 19 Drawing – Whimsical Creatures
- 20 Alcohol-Based Inks and Markers (any surface)
- 21 Calligraphy and Zentangle (any media)
- 22 Fabric, Silk or Theorem painting (any media)
- 23 Mixed Media (2D or 3D)
- 24 Small Furniture – see definition
- 25 Repurposed Item – see definition
- 26 Original Design by artist (any media)
- 27 Other Not Listed

Decorative Arts – Professional - Division 3

Class Description

- 1 People/Portraits (any media)
- 2 Places (any media) (scapes - land, sea, sky, and city)
- 3 Still life, florals or things (any media)
- 4 Animals (realistic) or Whimsical Creatures (any media)
- 5 Stroke Work /Folk Art (any media)
- 6 Other not listed (any media)

How to Enter Online

Exhibitors are encouraged to enter online at www.southfloridafair.com/TheCreationStation.

- Review this Competition Handbook to see which division and class your entry is eligible to compete in. Follow the easy steps listed below to enter.
- To enter online, go to www.southfloridafair.com/TheCreationStation and complete the form. Click the submit button and make sure you are brought to the thank you for registering page.
- Everyone must register as a new exhibitor each year.
- When registering, please verify all information is correct. Please pay special attention to capitalization, full names of cities/counties and use proper spelling (no abbreviations).

Mailing Paper Entry Forms

Entry Forms must be postmarked by Friday, January 1, 2021.

Failure to complete any portion of entry form may result in disqualification.

Mail Entry Form to:

The Creation Station, Crafts & Specialty Arts – Decorative Arts
South Florida Fair
P.O. Box 210367
West Palm Beach, FL 33421-0367

Delivery Entries

All entries must be delivered to the South Florida Fair on either:

Friday, January 8, 2021
9 a.m. – 5 p.m.

Saturday, January 9, 2021
9 a.m. – 5 p.m.

Sunday, January 10, 2021
9 a.m. – 5 p.m.

Deliver entries to:

South Florida Fair
Building 3
Attn: Lorie Stinson

Enter Gate 10 off Fairgrounds Road.

Entries arriving at the Fairgrounds after delivery deadline may be disqualified.

Retrieving Entries

- See the calendar for pick up dates, times, and locations (Page 1)
- Entries not picked up on designated dates can be arranged for special pick up appointment by emailing lorie@southfloridafair.com
- All entries not claimed by March 1 of the same year will be recycled, disposed, or donated.

General Rules

Disclaimer

All competitive exhibits are entered at the exhibitor's risk. The South Florida Fair does not insure and is not responsible for any loss, damage, or theft of entries, even if the loss, damage, or theft occurs as the result of the handling of the exhibit by staff, volunteers, contractors and/or visitors. If the exhibitor desires insurance coverage, this coverage should be secured from a personal insurance agent prior to entry and the policy written to cover the period of exhibition and transportation. Reasonable care will be taken to prevent loss or damage to exhibits. Unauthorized persons are not permitted in the building after closing hours.

Division/Class Cancellation

The South Florida Fair reserves the right to return entries and cancel any division or class in which, in its judgment, the entries are insufficient to secure adequate competition.

Entry Errors

South Florida Fair is not responsible for finding errors in entries. Exhibitors are responsible for all errors which were submitted online or on entry and summary forms. No exhibitor shall be entitled to an award which has been disallowed as the result of his own error. The South Florida Fair shall withhold the payment of awards for exhibits that are ineligible and may recover awards that have been paid for ineligible entries that are disclosed during post audits of Fair records. However, exhibitors with cause are entitled to question the validity of any disallowance. Such exhibitors should inform the South Florida Fair immediately, in writing, giving their name, address, complete description of the entry and the reason for requesting reconsideration. Requests will not be considered later than 90 days after receiving notice of disallowance.

Premium Payments

Premium awards will be paid to the Best of Show. Best of Show awards will be chosen from the first-place winners in each Division. Amounts vary depending on Division.

Substitution

Substitutions may be made in still exhibits only in the same division of the original entry class of the original exhibitor and may be made only if completed by the entry delivery date. Substitutions must be made at time of delivery check in. The South Florida Fair or the judge may disqualify or transfer to the correct class any entry which is not a true representative of the division or class in which it is entered.

Previously Entered Entry

Any entry that has been exhibited at a previous South Florida Fair is not eligible for entry in this year's South Florida Fair, excluding Horticulture and Creative Aquarium entries.

Verification

Exhibitors wishing to verify that the South Florida Fair has received submitted entry forms must include a self-addressed/stamped envelope when submitting entry forms. Online submissions will receive a confirmation email.

Responsibility

The South Florida Fair shall not be responsible for exhibits remaining on the fairgrounds after designated release times. All still exhibits or display elements remaining on the Fairgrounds after the designated release time will be treated as abandoned property and will be disposed of on or before March 1 of the current year.

Removal of Entries

Exhibitors may not remove their entry from the South Florida Fair once it has been accepted. Entries must be on exhibit at the official opening of the Fair or at any other time specified in the Competition Handbook and shall not be removed from the Fairgrounds prior to the release date printed in the handbook, except (at the discretion of the South Florida Fair) in cases of evidence of sickness, accident and/or death, or other circumstances that are in the best interests of the Fair.

Design

The South Florida Fair assumes total design control over the presentation of the exhibits. Entries designed for hanging and not so equipped will be hung in a manner deemed appropriate by the Fair. No exhibit changes will be made once the entries have been displayed. Once an entry has been received by the South Florida Fair, no further handling of entry by exhibitor shall be permitted. Relocation and final placement shall be accomplished by South Florida Fair personnel. Entries requiring assembly/disassembly must include detailed instructions and sketches for assembly/disassembly. Instructions should indicate lifting points, unsecured parts and any other information required for such handling. Where necessary, bank pins will be utilized to attach exhibits for display.

Decorative Arts Competition Entry Form

OFFICE USE ONLY

Exhibitor # _____

Entry Forms must be postmarked by Friday, January 1, 2021.*Failure to complete any portion of entry form may result in disqualification.***Please print legibly**

Exhibitors Name (First, Last)		
Mailing Address		County
City	State	Zip Code
Phone		Email

Competition Division: ☐ Beginner (ages 18+)☐ Non-Professional (ages 18+)☐ Professional (ages 18+)**Exhibitors may enter up to six (6) entries for judging.**

	DIVISION#	CLASS#	CATEGORY	ITEM DESCRIPTION
1				
2				
3				
4				
5				
6				

I hereby certify that I have read the South Florida Fair General Rules for The Creation Station, Crafts & Specialty Arts Program (Page 7) and the above item(s) is/are entered for exhibition strictly in accordance with these rules, by which I agree to be governed. I also agree that the South Florida Fair may use my name, likeness, or photograph (including, but not limited to photographs of my entry), in any manner relating to my participation in The Creation Station, Crafts & Specialty Arts Program, free of charge and without further notice or consultation.

Signature of exhibitor_____
Date**Mail Entry Form to:**

The Creation Station, Crafts & Specialty Arts – Decorative Arts
South Florida Fair
P.O. Box 210367
West Palm Beach, FL 33421-0367