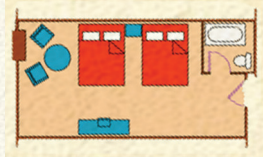


TOWER GUEST ROOM

\$89 • Includes breakfast for 2

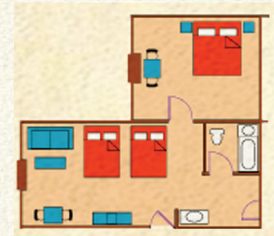
- Two queen beds or one king bed
- Microwave
- Refrigerator
- Coffee Maker
- 25" Flat Screen TV



FAMILY SUITE

\$169 • Includes breakfast for 4

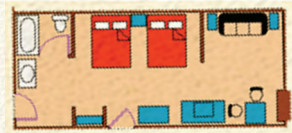
- Two queen beds, one king bed and one sofa bed
- Microwave
- Refrigerator
- Coffee Maker
- Two 25" Flat Screen TV



JUNIOR SUITE/VILLAS

\$89 • Includes breakfast for 2

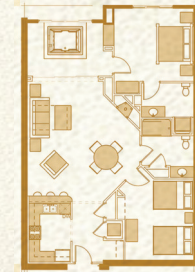
- Two queen beds or one king bed plus one sofa bed
- Semi-private living area
- Microwave
- Refrigerator
- Coffee Maker
- 25" Flat Screen TV



2-BEDROOM CONDO

\$229 • Includes breakfast for 4

- One king bedroom with fireplace
- Two queen beds
- Sofa bed
- Living room with stone fireplace
- Lounge chair
- Dining room
- Two bathrooms
- Full kitchen
- Oversized Jacuzzi



PRESIDENTIAL SUITE

\$169 • Includes breakfast for 4

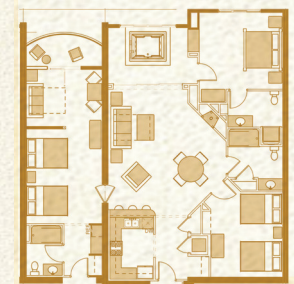
- Living room with sofa bed
- Private bedroom with king bed
- Two spectacular balconies
- Wet bar
- Microwave
- Refrigerator
- Coffee Maker
- Two 25" Flat Screen TV



3-BEDROOM CONDO

\$318 • Includes breakfast for 6

- One king bedroom with fireplace
- Four queen-size beds
- Two sofa bed
- Living room with stone fireplace
- Lounge chair
- Dining room
- Three bathrooms
- Full kitchen
- Oversized Jacuzzi
- Balcony



Counties with more than one room reservation – please email Robin at robind@chulavistaresort.com

Vendors and guests needing only one room reservation – please call 855-420-9154

Guest rooms are based on up to 2 people per room in the Tower and Junior Suites, and 4 people in the Family, Presidential and 2-bedroom condos. Each additional occupant is \$20 per night. All guests receive a full breakfast and waterpark passes.