

**INTERMEDIATE LAMB  
KVLS MARKET ANIMAL RECORD BOOK  
CHECK OFF LIST 2020-2021**

**Record books are due on Wednesday, January 20, 2021 from 4:00 – 6:00 p.m. at KVLS.**

**The date for the Skill-a-thon is Wednesday, January 27, 2021 from 2:00 - 6:00 p.m. at the KVLS Arena.**

**Report cards are due on January 27, 2021. Note: All exhibitors must bring report cards to the Skill-a-thon.**

**If you do not bring your report card on January 27, 2021 you must take the Skill-a-thon and make a passing grade of at least 70%.**

- ☐ **Is the record book in a 4-H/FFA Cover?**
- ☐ **Is the typed Auctioneer Statement attached to the front cover?**
- ☐ **Is the Judging Sheet attached to the front cover?**
- ☐ **Is your record book in correct order?**  
[Cover Page, Project Plans and Goals, Beginning Inventory, Expenses During Project (Feed, Hay, Equipment and Vet/Health), Closing Equipment Inventory, Weight Record, Financial Summary, Show and Sale Record, Demonstrations and Exhibits, Leadership and Citizenship, Project Highlights, Activities (1-6), Certificates (Participation/Demonstration), Project Attachments (Project Story & Project Pictures), Auctioneer Statement and Club Meeting Log]
- ☐ **Look through your record book one more time and make sure each page is complete. NOTE: The Financial Summary/Project Summary (“AFTER SALE” data in the right column), Show Record, Sale Record and activities are to be completed after the show and sale.**

**REMINDERS: Your record book score must be 70% or better in order to participate in the KVLS Market Animal Show and Sale.**

**Record books must be completed by the exhibitor and in their own handwriting.**

Please sign below to verify that you have completed this check off list.

---

Parent Signature

---

Date

---

Exhibitor Signature

---

Date



**4-H MARKET ANIMAL RECORD BOOK**  
**NOTES**



Record books are due on Monday, May 3rd , 2020.

Make sure you fill-in after fair information to receive maximum points.

**CHECKLIST:**

<b>4-H GREEN PROJECT COVER</b>	
<b>PHOTO PAGE</b>	
<b>PROJECT REPORT SUMMARY/ACTIVITIES INCLUDING FINANCIAL SUMMARY PAGES</b>	
<b>STORY</b>	
<b>PHOTOS</b>	
<b>CERTIFICATES—Leadership, Citizenship, Demo/Talk, Community Service (club level)</b>	

---

---

I personally prepared this report and it is a true record of my 4-H project. Record books **MUST** be completed in member's handwriting.

Approval of this report

4-H Member Signature: \_\_\_\_\_ Date: \_\_\_\_\_

Parents or Guardian Signature: \_\_\_\_\_ Date: \_\_\_\_\_

4-H Leader Name: \_\_\_\_\_ Date: \_\_\_\_\_

# **KVLS MARKET ANIMAL INT. RECORD BOOK JUDGING SHEET**

NAME \_\_\_\_\_ AGE \_\_\_\_\_

CLUB \_\_\_\_\_

**\*\* ALL RECORD BOOKS MUST HAVE A COMPLETED PHOTO PAGE AND TURNED INTO THE KVLS OFFICE IN A GREEN 4-H OR BLUE FFA COVER. ANY RECORD BOOK NOT IN A GREEN OR BLUE COVER OR NOT COMPLETE WILL NOT BE GRADED.**

SECTION	COMMENTS	POSSIBLE SCORE	ACTUAL SCORE
Beginning and Ending Inventories		10	
Expenses: feed, hay, equipment and non-equipment, and vet (health)		20	
Animal Weight, Feed Conversion Record		5	
Project Summaries (Feed and Gain Summary & Financial Summary)		10	
Demonstrations and Exhibits		10	
Leadership and Citizenship		6	
Things Learned/Project Highlights		10	
Project Story		15	
Project Pictures		10	
Spelling and Neatness		4	
<b>Subtotal – Possible Score</b>		<b>100</b>	
<b>Bonus Points</b>			
<b>Total Points Possible</b>			

**No plastic covers on pages**

100 – 90      Blue  
89 – 80      Red  
79 and under   White

JUDGE'S COMMENTS: \_\_\_\_\_

\_\_\_\_\_  
\_\_\_\_\_  
\_\_\_\_\_

# Osceola County 4-H Project Report Score Sheet

Name: \_\_\_\_\_

Club: \_\_\_\_\_

Project Area: \_\_\_\_\_

Points Earned	Possible Points	Criteria	Expectations
<b>Section 1: Project Plans and Goals (5 points possible)</b>			
	5	<b>This is what I want to accomplish this year:</b> - Ability to set obtainable and relevant goals. - <b>Goal</b> should be in project area. 2 points off if not.	
<b>Section 2: Project Overview (41 points possible)</b>			
	9	<b>4-H Presentations-</b> Automatic 3 points off if one presentation is NOT in project area - A minimum of <b>one</b> oral presentation related to your project work. - See Expectations column to receive maximum points.	Jr. 1 demo = 9pts Int. 2 demos = 9pts Sr. 3 demos = 9pts
	4	<b>Exhibit-</b> Automatic 2 points off if one exhibit is NOT in project area - A minimum of <b>one</b> exhibit must be in your project area. - See Expectations column to receive maximum points.	Jr. 1 exhibit = 4pts Int/Sr 2 exhibits = 4pts
	8	<b>Leadership-</b> Automatic 2 points off if one is NOT in project area - A minimum of <b>one</b> leadership activity in your project area. - See Expectations column to receive maximum points.	Jr. 2 (proj.+1) = 8pts Int. 2 (proj.+1) = 8pts Sr. 4 (proj.+3) = 8pts
	8	<b>Citizenship-</b> - Citizenship is helping others. - See Expectations to receive maximum points.	Jr. 2 (proj.+1) = 8pts Int. 2 (proj.+1) = 8pts Sr. 4 (proj.+3) = 8pts
	12	<b>Project Highlights – 3 points for each of the following:</b> - Listed information and skills learned through project experiences. - Listed challenges faced when completing project work & <b>how handled</b> - Listed major successes/accomplishments in project. - Listed future plans/what could be done differently next time.	Jr: 1 in each area of project highlights Int./Sr.: 2 in each area of project highlights 1.5 points off if it is not listed how challenge was handled
<b>Section 3: Project Attachments (48 points possible)</b>			
	10	<b>Financial Summary Page</b>	
	24	<b>Project Book / Activities– 4 points for each activity completed</b> - Completed required number of activities ( <b>six</b> ) outlined in the project book as evidence of learning project skills. - Activity Forms can be submitted for an activity you completed. - Approved county level workshop certificates (with Agent signature) may be substituted as an activity. - Three points off each activity, if activity form was not submitted.	An Activity Form must be submitted if: -attended a workshop with no certificate -attended a show not put on by 4-H/KVLS -an activity was completed outside of the record book.
	10	<b>Project Story</b> - Story portrays experiences with project work. - Reflects on what was learned from the project experience and future plans. -See guidelines within 4-H Project Report	
	10	<b>Project Pictures</b> - Shows member actively engaged in learning experiences with his project (evidence of beginning, middle and end /with captions and dates). Three points are given for completion of each section. - Minimum of 3 photos and maximum of 20. - Printed photo collages are allowed.	-If more than 20 pics, automatic one point off. -If any captions or dates are missing, automatic 3 points off
	<b>100</b>	<b>Total Score</b>	

Evaluators: \_\_\_\_\_

## **PROJECT PLANS AND GOALS**

**Goals are your plans for the year. They should be specific, measurable, achievable, realistic, and timely (S.M.A.R.T.)** A goal is a statement that reflects something you aim to accomplish within your project.

S=specific, M=measurable, A=achievable R= relevant, and T=timely

Please fill in the following statements about your project goals for the year.

My goal this year is:

My target finish date is:

To reach my goal, I will do these three things:

1.

2.

3.

Member Signature: \_\_\_\_\_ Date: \_\_\_\_\_

## **WHY KEEP RECORDS**

- To have an account of all your accomplishments in one place.
- Records point out the advantages and disadvantages of projects.
- Records reflect your interest as a 4-H/FFA member.
- Records show self-improvement and service to others.
- Records show others what you have done.
- By keeping records, this will train you for future work.
- Records can qualify you for contests, awards and scholarships.

## **HELPFUL HINTS**

- Read the whole record book through before you start. You may want to make a copy of your record book to use as a rough draft.
- Fill in the beginning inventory first.
- Keep your records up-to-date.
- If you need more pages, make them yourself and fasten them in the book.
- When items or supplies have been donated to you for use in your project, make sure to give the item or supply a value and carry the value through to the total of the section and throughout the Record Book.
- Do not include materials in the Record Book that will add “bulk” (example: various scrapbook embellishments, such as buttons, eyelets, ribbons, dimensional stickers, letters, etc.) Use only “flat” stickers, photos, etc.
- Do not confuse page numbers with section numbers.

**NOTICE TO PARENTS:** Parents may provide leadership and guidance for the member. However, the Record Book must be compiled and completed by the member in their own handwriting.

**CURRENT YEAR:** All information in this Record Book is to include those activities and events you have done this year. Do not include information that you did last year or the years before, only include current information.

**NEATNESS:** You can use either a pencil or pen. You may either print or use cursive writing. You may use lined or plain papers for your story and picture pages. (Make sure there are no ragged edges). If you make a mistake, erase it, or use white-out to correct pen errors. Make your records as neat as possible. **THE ONLY PAGE THAT CAN BE TYPED IS THE AUCTIONEER’S STATEMENT.**

**ACTIVITIES:** A total of 6 activities need to be completed. There are 6 activities in the record book that will satisfy this requirement. Certificates for interactive activities and workshops issued by the Extension Office may count toward your six required activities. It is recommended that you complete the 6 activities provided in the record book to help prepare you for Skill-A-Thon.

## **BEGINNING INVENTORY**

This record tells you what animal and equipment you have at the start of your project. Put down prices that you paid for your equipment or the estimated value. If you showed a lamb last year, the closing inventory of your project could be used as a guide for your opening inventory this year.

### **(1) ANIMAL**

<b>DESCRIPTION OF ANIMAL (Ewe/Wether) (Breed)</b>	<b>Date of Birth</b>	<b>Start Weight at Purchase</b>	<b>*Price / Pound</b>	<b>Price Paid</b>
			\$	\$

\* Example: Paid \$80.00 for a 65 pound lamb

$\$80.00 \div 65 \text{ pounds} = \$1.23/\text{Pound}$

### **(2) EQUIPMENT**

This is a record of what you already have when you start your project. Examples (but not limited to): shovel, bucket, feed scoop, grooming supplies, halter, show box etc. (Including the cost of your pen or barn is optional.)

<b>DESCRIPTION OF EQUIPMENT</b>	<b>YEAR ITEM WAS PURCHASED</b>	<b>TOTAL VALUE</b>
<b>TOTAL VALUE OF EQUIPMENT</b>		

(Rev. 9/07)

## **EXPENSES DURING PROJECT**

It is important to keep up with your expenses of your lamb project and to keep good records. Be sure to record your expenses as they occur so you don't forget.

### **(3) FEED EXPENSES**

In this section you will list all your feed expenses (grains/mineral/etc.).

DATE	DESCRIPTION	(A) # OF BAGS	(B) lbs. per BAG	(A) X (B) lbs. of FEED	(C) \$ per BAG	(A) X (C) TOTAL COST
<b>SUBTOTAL</b>						
<b>TOTALS</b>						

**POUNDS of  
FEED/MINERAL**

**TOTAL FEED  
EXPENSE**

(Rev. 7/2008)



## EXPENSES DURING PROJECT

#### (4) HAY EXPENSES

In this section you will list all your hay expenses. Include hay through completion of your project

DATE	DESCRIPTION (what kind of hay)	(A) # OF BALES	(B) PRICE PER BALE	(A) X (B) TOTAL COST
TOTALS				

**TOTAL #  
OF BALES****TOTAL HAY  
EXPENSES**

**(5) EQUIPMENT EXPENSES**

This includes any equipment items purchased beginning with the second day of your project.

DATE	DESCRIPTION	TOTAL COST
TOTAL PURCHASED EQUIPMENT EXPENSES		

**(6) NON-EQUIPMENT EXPENSES**

This includes any items that you spend money for other than equipment. Examples (but not limited to): stamps for letters, film/developing, bedding, soap, etc.

DATE	DESCRIPTION	TOTAL COST
TOTAL PURCHASED NON- EQUIPMENT EXPENSES		

(Rev. 9/07)

**(7) VETERINARY AND HEALTH EXPENSES**

This includes any money spent for products or services related to your animal's health. Examples include, but are not limited to: veterinarian fees, implants, de-wormers, medications, fly spray, etc. When supplies, equipment, medications, etc. have been donated for use in your project, give the supply, item, medication, etc. a real value and include those values in your totals throughout the record book.

**EXAMPLE ONLY:**

DATE	DESCRIPTION	COST
Sept. 15, 2014 (at first official weigh-in)	Ear Tag (DONATED)	\$1.00
Sept. 15, 2014	Fly spray	\$4.50

**TOTAL VETERINARY AND HEALTH EXPENSE    \$5.50**

**VETERINARY AND HEALTH EXPENSES**

DATE	DESCRIPTION	COST
	<b>TOTAL VETERINARY AND HEALTH EXPENSE</b>	

(Rev. 9/13)

## **CLOSING EQUIPMENT INVENTORY**

### **(8) CLOSING INVENTORY**

This record tells you what you have at the end of your project. This should include all the equipment you started the project with [(2) **EQUIPMENT**] and equipment you purchased during the project [(5) **EQUIPMENT EXPENSES**] and still have at the end of your project. [Do not include **NON-EQUIPMENT EXPENSES** from Section (6).]

<b>DESCRIPTION OF EQUIPMENT</b>	<b>YEAR PURCHASED</b>	<b>TOTAL VALUE</b>
<b>TOTAL VALUE OF CLOSING INVENTORY:</b>		

(Rev. 9/07)

(9)

**ANIMAL WEIGHT AND FEED CONVERSION RECORD**

You must have a minimum of four (4) weights recorded

Col. A	Col. B	Col. C	Col. D	Col. E	Col. F	Col. G	Col. H
Date	Week # in your Project	Animal Weight	Gain Since Last Weight	# Days	Col D ÷ Col. E Avg. Daily Gain	Pounds of Feed Since Last Weight	Col. G ÷ Col. D lbs feed/lbs. gained
Of Purchase	0						
1 <sup>st</sup> Official Weigh-In							
Estimated Show Weight							
Actuals - After Sale							

## **FEED AND GAIN SUMMARY**

<b>BEFORE SHOW/ SALE</b>	<b>WEIGHT GAIN</b>	<b>AFTER SALE</b>
_____	Final Weight	_____
(estimated show weight – Section (9))		(actual sale weight – Section (11))
_____	Starting Weight	_____
_____	Total Weight Gain	_____
(estimated)		(actual)

(Subtract your starting weight from your final weight to find your weight gain.)

### **FEED**

_____	Total Pounds of Feed Fed (Section 3 – Do not include Hay)	_____
_____	Pounds of Feed Per Pound of Gain (Equals: Total Pounds of Feed ÷ Total Weight Gain)	_____
_____	Total Cost of Feed (Section 3)	_____
_____	Feed Cost Per Pound of Gain (Equals: Total Cost of Feed ÷ Total Gain)	_____

(Rev. 8/2008)

## **FINANCIAL SUMMARY**

### **BEFORE SHOW/SALE**

1. \_\_\_\_\_

2. \* \_\_\_\_\_  
(\*Estimated) Use animal  
value = \$1.00 per lb X your  
estimated show weight – Section (9)

4. \_\_\_\_\_  
(Add lines 1 and 2)

### **RECEIPTS**

Closing Inventory  
[Section (8)]

Market Animal Value

Other Income/Add-on Support  
[Section (11)]

### **TOTAL RECEIPTS**

### **EXPENSES**

5. \_\_\_\_\_

6. \_\_\_\_\_

7. \_\_\_\_\_

8. \_\_\_\_\_

9. \_\_\_\_\_

10. \_\_\_\_\_

11. \_\_\_\_\_  
(Add lines 5 through 10)

Cost of Animal  
[Section (1)]

Feed Expenses  
[Section (3)]

Hay Expenses  
[Section (4)]

Equipment Expenses  
[Section (5)]

Non-Equipment Expenses  
[Section (6)]

Veterinary & Health Expenses  
[Section (7)]

Other Deductions:  
(Examples: Check-off Fee,  
Ultrasound, Buyer's Reception)

Commission:  
Section (11)

### **TOTAL EXPENSES**

### **PROFIT OR (LOSS)**

(Subtract your **TOTAL EXPENSES** from your **TOTAL RECEIPTS**)  
(Line 4 – Line 11)

### **AFTER SALE**

\_\_\_\_\_ 1.

\_\_\_\_\_ 2.  
[Actual – Section (11)]

\_\_\_\_\_ 3.

\_\_\_\_\_ 4.  
(Add lines 1, 2 & 3)

\_\_\_\_\_ 5.

\_\_\_\_\_ 6.

\_\_\_\_\_ 7.

\_\_\_\_\_ 8.

\_\_\_\_\_ 9.

\_\_\_\_\_ 10.

\_\_\_\_\_ 10(a).

\_\_\_\_\_ 10(b).  
(Commission to KVLS – 5% X Sale Price)

\_\_\_\_\_ 11.  
[Add lines 5 through 10(b)]

(Rev. 8/2008)

(10) **SHOW RECORD** (to be completed after the show)

**AWARDS & RECOGNITIONS RECEIVED IN THIS PROJECT**

DATE of SHOW	ANIMAL TAG #	CLASS ASSIGNED	PLACE/RIBBON

**AWARDS  
RECEIVED:**


(11) **SALE RECORD** (to be completed after the sale)

DATE of SALE	BUYER	PRICE PER POUND	SALE WEIGHT	SALE PRICE

**ADD-ON SUPPORT:**

NAME OF SUPPORTER	\$ AMOUNT

**DATE OF 4-H/FFA MEETING ATTENDED AFTER FAIR:**

DATE of MEETING	PLACE OF MEETING	NAME OF LEADER

(Rev. 9/07)



## **Presentations**

List your 4-H Presentations (demonstrations and illustrated talks). This is an opportunity to tell others about your 4-H project. Some examples of places that 4-H Presentations can be done are at 4-H club meetings, County Events, District Events.

- Juniors should have at least one 4-H presentation and it should be project related.
- Intermediates should have at least two 4-H presentations and one should be project related.
- Seniors should have at least three 4-H presentations and one should be project related.
- Three points will automatically be deducted if NO presentation is listed in project area.

<b>DATE</b>	<b>PRESENTATION TITLE/ PROJECT AREA</b>	<b>LOCATION</b>
04/30/14	Different Dog Breeds/ Dog	4-H County Events, Osceola Extension

## **Exhibits**

Exhibits are an opportunity for you to show what you learned in your 4-H project. This may be done by exhibiting something in the fair (for example showing your animal, participating in Fashion Revue, game board, tabletop) or through a contest (for example Marine Ecology, Consumer Choices).

- Juniors must have at least one exhibit and it should be project related to receive maximum points.
- Intermediates and Seniors must have at least two exhibits and one must be project related.

<b>DATE</b>	<b>SUBJECT</b>	<b>LOCATION</b>
2/15/19	Table Top	Club Meeting

## **Leadership**

Leadership is defined as any time when you teach or lead others. For example: camp counselor, club officer, show others how to groom an animal, Farm City Ambassador, etc. Keep in mind that sometimes a demonstration can be considered leadership. This is only if the audience is also doing the task at the same time. Remember, an activity can only be listed once. If it is listed as a demonstration, it cannot be listed for leadership.

- Juniors and Intermediates must have at least two leadership activities
- Seniors must have at least four.
- Two points will automatically be deducted if NO leadership is listed in project area.

---

---

---

---

---

## **Citizenship/Community Service**

Citizenship is anytime you have helped others. Did you help someone out? Did you donate something? Did you help the environment? Example: helping a friend build a hog pen, help pick-up litter, and donate your old show shirt to a 4-H member.

- Juniors and Intermediates must have at least two citizenship/community service activities
- Seniors must have at least four citizenship/community service activities.  
List citizenship/community experiences below; use additional page if necessary.

---

---

---

---

---

## **PROJECT HIGHLIGHTS**

Project highlights are an important part of your record book. It shows what you have learned, challenges you have faced, successes and accomplishments you have had and, along with what you may do differently next time. When completing the challenges faced section, make sure you explain how you handled them. More explanation is always better.

- Juniors (ages 8-10) list a minimum of **one** thing learned in each category.
- Intermediates (ages 11-13) list a minimum of **two** things learned in each category.
- Seniors (ages 14-18) list a minimum of **two** things learned in each category.

### **List information and skills learned through project experiences:**

Example:

- I learned how to properly feed my animal so that my animal makes weight at the Osceola County Fair.

---

---

---

---

---

---

---

---

---

---

### **List challenges faced when completing project work and how you handled them:**

Example:

- One challenge I faced was breaking my animal. At first, I could not get a hold of my animal without the help of adults. After much practice and help from my dad, I was able to put a halter on my animal and lead him around.

---

---

---

---

---

---

---

---

---

---

**List major successes/accomplishments in your project:**

Example:

- One major accomplishment in my project was giving a demonstration at county events on my animal. I had to research and practice my speech in order to do a good job.

---

---

---

---

---

---

---

---

---

---

---

---

**What I will do different next time/future plans:**

Example:

- One thing that I will do differently is to begin my demonstration earlier in the year. This was the first year I did county events and I was very nervous. I could have used some more practice.

---

---

---

---

---

---

---

---

---

---

---

---

## **4-H Project Book/ Activities**

**(ONLY for 4-H Members)**

Please list the six activities you completed in your 4-H project area. If activities were completed in group setting, please attach certificates with County Agent signature. There must be at least six activities—these can be within the book, activity certificates or a combination of book and activity certificates.

NEW-An Activity Form needs to be completed for:

- a workshop (if no certificate was given)
- a show that was not put on by 4-H/KVLS
- any activity completed outside of the record book

The purpose of the activity sheet is to share what you learned. A form is included.

Examples:

- Steer Parts, 10/1/18, Page 17
- Steer identification plate, 12/3/18, Activity Form and picture page 25
- Pin the parts on the hog, 1/7/19, Certificate from club leader (activity done at a club meeting)
- Goat Workshop, 11/25/18, Activity Form and certificate

<b>Activity</b>	<b>Date</b>	<b>Page #/Certificate/Activity Wks</b>
<b>1.</b>		
<b>2.</b>		
<b>3.</b>		
<b>4.</b>		
<b>5.</b>		
<b>6.</b>		



## **Osceola County 4-H Record Book Activity Form**

What activity did you complete (Title)?

---

---

What did you learn?

---

---

---

---

---

---

---

How did this activity help you with your project? \_\_\_\_\_

---

---

---

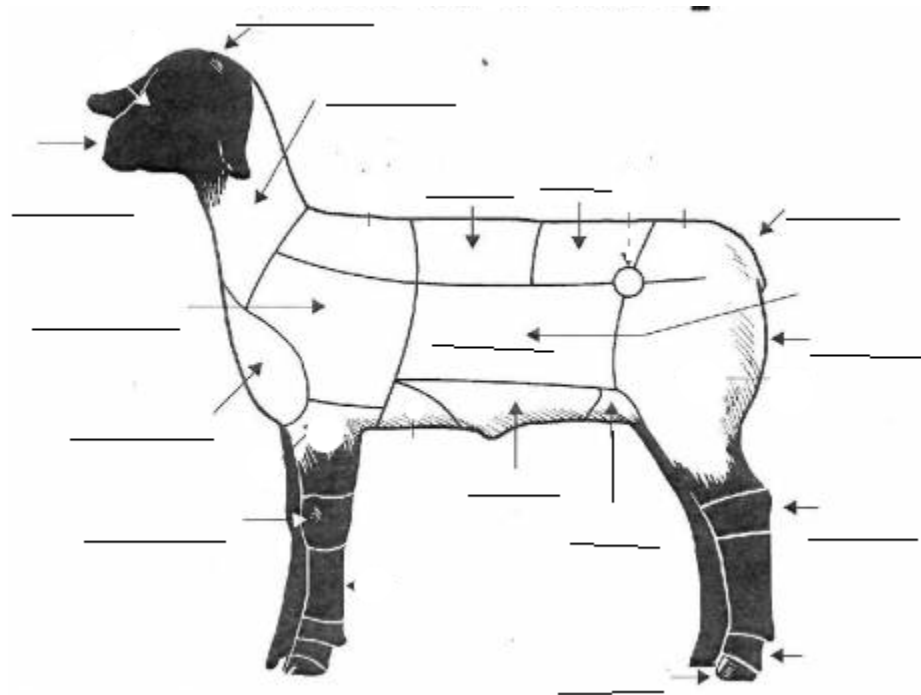
---

---

# INTERMEDIATE LAMB BODY PARTS

## ACTIVITY #1

Poll	Belly
Muzzle	Leg
Shoulder	Knee
Brisket	Rear flank
Dock	Twist
Hock	Loin
Neck	Back
	Middle



## **INTERMEDIATE MARKET LAMB BREED IDENTIFICATION ACTIVITY #2**

1. White-faced breed developed in New Zealand from Lincoln and Leicester x Merino crosses. These medium-sized sheep are prolific, good mothers that produce good market lambs and yield heavy, medium-wool fleeces with good staple length.
2. Developed in Southern England, these sheep are a large, moderately prolific breed with wool caps, black faces, and medium-wool fleeces. They also have very good milking ability, growth, and carcass cutability.
3. This breed, highly adaptable to a variety of climates, was developed in Scotland. These small-sized, white-faced sheep with bare heads and legs are moderately prolific, easy lambers, good milkers, and possess excellent lamb vigor.
4. This breed originated in Maine from crosses of the St. Croix, Suffolk and Wiltshire Horn. They are woolless, easy-care sheep capable of high performance in a variety of management systems. They possess excellent mothering abilities, are good milkers, prolific and have an extended breed season. They are the largest of the hair breeds and produce a lean and well-muscled carcass.
5. This polled breed with black head and legs has the most number of purebred registrations in the U.S. It is known for its meatiness and high carcass quality. Lambs grow rapidly and produce high cutability carcasses.
6. Originating in Southern England, these sheep can be polled, scurred, or horned and are known for breeding out of season, being heavy milkers and producing more than one lamb crop per year. Hardy lambs yield heavy-muscled carcasses.
7. The oldest breed from England, this sheep is small to medium in size and known for producing meaty carcasses. It is polled, with a gray to mouse brown face and wool on its legs. Fleece from this breed are of medium-wool.
8. Developed in the United States from a Lincoln ram x Rambouillet ewe cross and known for its size, wool-producing ability, and productivity under range conditions. This breed is large, white-faced, polled and has wool on the legs.
9. Originating in England, this medium-sized, dark-faced, polled breed has wool on its head and face. It is prolific, matures early, milks well, and is heavily muscled. Lambs are hardy, fast-growing and produce lean, well-muscled carcasses.
10. Developed in France, this long-lived rugged breed will breed out of season and has wool that is fine in fiber diameter. These sheep are large, white-faced, with wool on the head and legs, and can be polled or horned.



11. Developed in Finland, this small to medium-sized, fine boned breed is open faced and produces medium grade, good staple length wool. Reaching sexual maturity early, ewes have strong maternal instincts and are very prolific—producing two or four lambs each lambing.
12. This breed originated in New Zealand from crossing the Border Cheviot with the Romney bred. They are an open-faced, medium-framed breed that produces bright, lofty, long stapled, medium-wool fleeces. Developed as an easy care sheep, they are both hardy and highly adapted to marginal forage-producing areas.

**MATCH:**

_____Perendale	_____Suffolk	_____Katahdin	_____Columbia
_____Dorset	_____Shropshire	_____Hampshire	_____Southdown
_____Cheviot	_____Rambouillet	_____Corriedale	_____Finnsheep

### STRUCTURAL DIFFERENCES SIDE VIEW ACTIVITY #3

Fill in the blank with the correct LEG STRUCTURE

*CORRECT*

*BUCK-KNEED*

*WEAK PASTERNS*

*SICKLE-HOCKED*

*POST-LEGGED*

*CALF-KNEED*

*CORRECT*

#### Side View Front Legs



#### Side View Rear Legs



# STRUCTURAL DIFFERENCES FRONT & REAR VIEW ACTIVITY #3

Fill in the blank with the correct LEG STRUCTURE

*CORRECT*

*KNOCK-KNEED*

*BOWLEGGED*

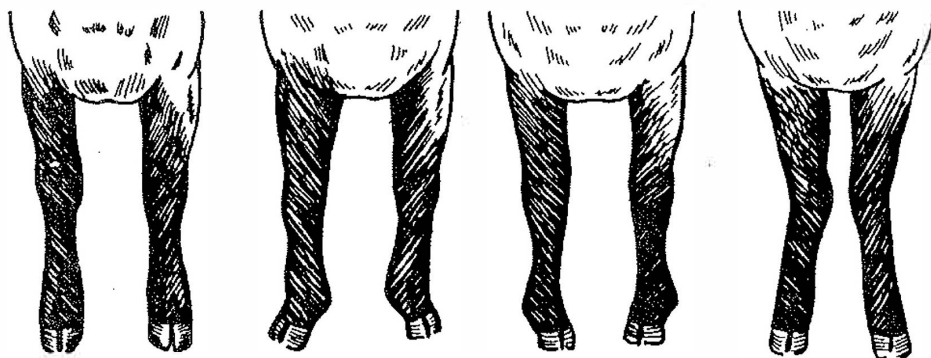
*COW-HOCKED*

*SPLAY-FOOTED*

*PIGEON-TOED*

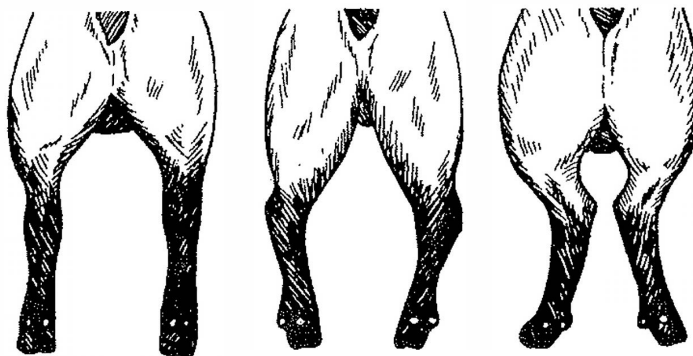
*CORRECT*

Front View



\_\_\_\_\_

Rear View



\_\_\_\_\_

**INTERMEDIATE MARKET LAMB  
BY-PRODUCTS – ACTIVITY #4**

Draw a line to match each cattle by-products to what it is made from.

**FAT AND FATTY ACIDS**

Tennis racket strings

Fertilizer

Chewing gum

**HIDE AND WOOL**

Paint

Insulation

Yarn

Felt

**INTESTINES**

Baseballs

surgical sutures

Art brushes

Carpet

**MANURE**

Solvents

**JUNIOR MARKET LAMB**  
**WHOLESALE CUTS – ACTIVITY #5**  
Enter the correct number by the corresponding  
cut of meat

_____	<b>Leg</b>
_____	<b>Loin</b>
_____	<b>Shoulder</b>
_____	<b>Rack</b>
_____	<b>Breast</b>
_____	<b>Foreshank</b>



## INTERMEDIATE MARKET LAMB FEED LABEL ACTIVITY #6

PLACE NUMBER BY THE PROPER LABEL DESCRIPTION

- \_\_\_\_\_ Feeding Directions
- \_\_\_\_\_ Ingredients
- \_\_\_\_\_ Net Weight
- \_\_\_\_\_ Manufactured by
- \_\_\_\_\_ Guaranteed Analysis
- \_\_\_\_\_ Drug Additives
- \_\_\_\_\_ Product Name  
and Brand Name
- \_\_\_\_\_ Crude Fiber
- \_\_\_\_\_ Crude Protein

1. \_\_\_\_\_

2. \_\_\_\_\_  
(for ruminants only)

**Medicated**  
Feed for 28 days as an aid in the  
Maintenance of weight gains in the  
presence of respiratory diseases  
such as shipping fever.

**Caution:** Use only as directed.  
Discontinue use 14 days  
prior to slaughter.

3. \_\_\_\_\_  
Chlortetracycline 7.6 grams/ton

4. \_\_\_\_\_  
5. \_\_\_\_\_, not less than 12%  
This includes not more than 1.00% equivalent crude  
Protein from non-protein nitrogen  
**CRUDE FAT**, not less than 2.0%

6. \_\_\_\_\_, not more than 19%

7. \_\_\_\_\_, Grain Products, roughage  
products, plant protein products, processed grain by-  
products, forage products, molasses products, calcium  
carbonate, salt, vitamin E supplement, vitamin A  
supplement, ferrous sulfate, potassium iodide,  
manganese oxide, copper chloride, cobalt  
glucoheptonate, vitamin D3 supplement, sodium  
selenite.

RUMINANT MEAT AND BONE MEAL FREE

8. \_\_\_\_\_: Feed at the rate  
of 12 pounds per head per day

9. \_\_\_\_\_  
The Best Feed Company  
P.O. Box 00000  
Small Town, USA

# Project Attachments

- Make sure you have your Photo Page (use any clear photo of yourself) as the first page of your report.
- Project Story: Create a story of some of your project experiences.
  - ✓ Tell about an enjoyable experience during this project year
  - ✓ Tell about a difficult experience this project year
  - ✓ Share what you have learned
  - ✓ Share at least one thing you will do differently next time
  - ✓ Share something unique about this project or your 4-H year
  - ✓ Share what you did after the Osceola County Fair

Your story should be long enough to cover the work you have done in this project during the 4-H year. Minimum 1 page length for Juniors, neatly handwritten or typed 14 pt font or minimum 2-3 pages length for Intermediates and Seniors, neatly handwritten or typed. Write on only one side of paper. Be sure to have an introduction, body and conclusion

- Project Pictures: Minimum requirement is to include three photos of your project work showing you and your project at the **beginning, middle** (work being done during your project), and **end**; include a **caption telling what you are doing in the picture and the date**. An automatic 3 points off if any captions or dates are missing. Make sure that you are in the pictures.

You must have a minimum of three (3) and a maximum of twenty (20) pictures. If not, automatic one point off. Flat stickers are acceptable, but do not include bulky scrapbooking accessories! No photo collages. No 3-D items.

You may also include pictures of you helping others in your citizenship and leadership activities. This does not count towards the limits on your numbers of photo (3 minimum, 20 maximum).

You may include club award certificates and market animal weigh-in receipts, if applicable, in this section.

## **AUCTIONEER STATEMENT INSTRUCTIONS**

Complete and **TYPE** Auctioneer Statement on next page and attach it to the inside of the front cover of your record book.

Due to the limited time available, and the high number of animals to be auctioned, *statements must be brief.*

- Type the statement in a 16 pt. font.
- Write it in 3<sup>rd</sup> person (she, he, her, his), NOT in 1<sup>st</sup> person (I, me, my).

Things you *may* include:

- The exhibitor's name (commonly called, not formal), age, school grade (7<sup>th</sup>, 8<sup>th</sup> – not A, B) and school name (DO NOT include the word "School" following "Elementary," "Middle," or "High.");
- The animal's name, your club's name and any offices you currently hold (do not use the word, "currently");
- The number of years you have been in 4H/FFA and number of years in this market project;
- Something learned/experienced this project year (relating to the project – serious or humorous);
- What your earnings will be applied toward;
- If you are a senior, mention that it is your last year and any goals/plans you have (college/major, military, etc.); and
- Any special thank-you's or acknowledgements.

Read it carefully and remove any unnecessary words.



## **AUCTIONEER STATEMENT**

EXHIBITOR'S NAME \_\_\_\_\_

NAME OF ANIMAL \_\_\_\_\_ TAG/TATOO # \_\_\_\_\_

Please write a short one paragraph story (100 words or less) about yourself for the auctioneer to read before he/she auctions your animal. Remember, this page must be typed and attached by a paper clip inside the front cover.

## CLUB MEETING LOG

### Club Name

**PLEASE NOTE: YOU MUST ATTEND AT LEAST 1 (ONE) 4-H MEETING  
AFTER THE FAIR**

[illegible]

Rev. 09/2010



“The Foundation for the Gator Nation” an Equal Opportunity Institution



Handbook revised by Brittany Justesen and Jessica Sprain, Extension  
Faculty  
Osceola County Cooperative Extension Service  
and the University of Florida